

MILES OF PIPE AND FLANGE PROTECTION

- Protect against corrosion and damage of pipes and pipe flanges during manufacture, transit and storage
- Reduce downtime and waste costs by safeguarding against contamination from foreign materials
- Avoid thread damage using appropriate caps or plugs to limit costly delays in your application



92



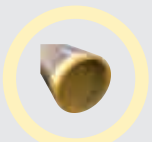
92



93



94



96



97



98



99



99



100



101



102

NEW

MORE THAN

800

PIPE AND FLANGE
PROTECTION
PRODUCTS
AVAILABLE

PIPE AND FLANGE PROTECTION



PIPE CAPS

092



PIPE PLUGS

097



FLANGE PROTECTION

098

PIPE CAPS

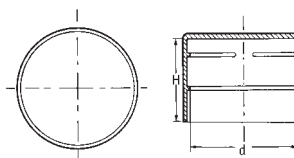
Standard Size Pipe Caps

SR 1358

Yellow LDPE



- Low cost and high quality
- Internal ribs ensure tight fit and release pressure build-up



Part Number	Part Number	Nominal Pipe Size	Dimensions (mm)	
			d	H
No Vent Hole	Vent Hole			
10286	43558	DN 15 1/2"	21.3	20.0
10287	43559	DN 20 3/4"	26.9	25.0
10288	43560	DN 25 1"	33.7	30.0
10294	10268	DN 32 1 1/4"	42.4	28.0
10295	10269	DN 40 1 1/2"	48.3	30.0
10296	10267	DN 50 2"	60.3	30.0
10298	10266	DN 65 2 1/2"	76.1	35.0
199480	199481	DN 80 3"	88.9	36.0
199482	199483	DN 90 3 3/4"	101.6	40.0
199484	199485	DN 100 4"	114.3	40.0
199486	-	DN 115 4 1/2"	127.0	40.0
199488	199489	DN 125 5"	139.7	40.0
199490	-	DN 140 5 1/2"	152.4	40.0
199492	199493	DN 150 6"	168.3	40.0
199494	199495	DN 200 8"	219.1	40.0
199496	199497	DN 250 10"	273.0	45.0
199498	199499	DN 300 12"	323.9	50.0
43970	-	DN 350 14"	355.6	57.0
43971	43455	DN 400 16"	406.4	60.5

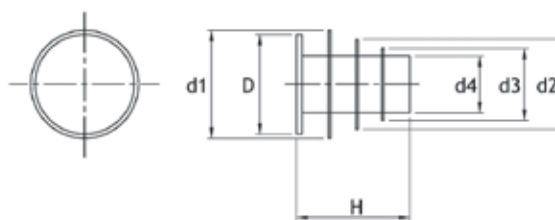
Part Number	Part Number	Nominal Pipe Size	Dimensions (mm)	
			d	H
No Vent Hole	Vent Hole			
43972	-	DN 450 18"	457.2	63.0
43973	43457	DN 500 20"	508.0	65.0
31710	-	DN 550 22"	558.8	60.0
43974	43458	DN 600 24"	609.6	67.0
31713**	-	DN 650 26"	660.4	100.0
34240**	-	DN 850 34"	863.6	170.0
34244**	-	DN 950 38"	965.2	180.0
31727**	-	DN 1000 40"	1016.0	180.0
31731**	42013**	DN 1050 42"	1066.8	185.0
34248**	-	DN 1100 44"	1117.8	185.0
31725	-	-	-	200.0
34252**	-	DN 1400 56"	1422.4	215.0
34254**	-	DN 1500 60"	1524.0	220.0
34256**	-	DN 1600 64"	1625.6	230.0

**Flexible PE
Maximum vent hole size is 4mm on 1/4" to 12" pipe caps and as specified for larger sizes.
Nominal diameters above DN 300 - 12" are the exact conversion of the d dimension.

Ribbed Pipe-End Plug

SR 1171

Red LDPE



Part Number	Pipe Outside Diameter (mm)	Max. Wall Thickness (mm)	Number of Fin	Dimensions (mm)						Standard Pack Quantity
				d1	d2	d3	d4	D	H	
492200	10.0	-	2	11.7	5.7	-	-	9.9	11.5	2000
492201	12.0	4.5	2	11.8	6.0	-	-	11.7	20.0	2000
492202	15.0	5.0	2	17.7	9.8	-	-	14.7	20.0	2000
492203	16.0	5.0	2	17.6	9.8	-	-	15.7	20.0	2000
492204	18.0	6.0	2	17.6	9.8	-	-	17.7	20.0	2000
492205	20.0	4.0	3	22.0	19.3	14.4	12.0	19.7	31.4	2000
492206	21.3	4.5	3	22.0	19.5	14.7	11.8	20.8	31.4	2000
492207	22.0	4.5	3	22.0	19.6	14.5	11.9	21.7	31.4	2000
492208	24.8-25.0	4.5	2	-	30.1	25.0	15.8	24.7	31.4	2000
492209	26.0-26.9	5.5	2	-	30.1	25.0	16.0	26.0	31.4	2000
492210	28.0-28.5	5.5	2	-	30.1	25.0	15.4	27.7	31.4	2000
492211	30.0	8.0	2	-	30.1	25.0	15.5	29.7	30.8	2000
492212	33.7	8.0	2	-	38.0	31.7	17.9	32.5	30.8	2000
492213	35.0	8.0	2	-	38.0	31.7	18.1	34.7	30.8	1000

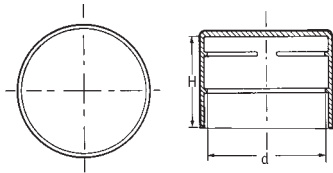
Part Number	Pipe Outside Diameter (mm)	Max Wall Thickness (mm)	Number of Fin	Dimensions (mm)						Standard Pack Quantity
				d1	d2	d3	d4	D	H	
492214	38.0	8.0	2	-	38.0	31.7	17.9	37.7	30.8	1000
492215	40.0	8.0	2	-	46.7	36.9	25.0	39.7	30.8	1000
492216	41.3-42.4	8.0	2	-	46.7	36.9	25.9	41.0	30.8	1000
492217	47.5-48.3	9.0	2	-	54.5	45.5	28.9	47.5	25.0	500
492218	50.0	10.0	2	-	54.7	45.5	29.3	49.7	25.0	500
492219	54.0	10.0	2	-	54.7	45.1	29.0	53.7	25.0	500
492220	60.3	14.0	2	-	61.0	55.4	35.9	59.7	20.0	500
492221	63.5	12.0	2	-	61.0	55.4	36.0	63.0	30.0	500
492222	73.0	16.0	2	-	74.0	65.3	48.2	72.7	30.0	200
492223	75.0-76.2	16.0	2	-	74.0	65.3	48.7	75.0	31.5	200
492224	85.0	17.0	2	-	88.4	79.0	60.3	84.0	31.5	200
492225	88.9	17.0	2	-	88.4	79.0	60.3	88.0	31.5	200
492226	114.3	20.0	2	-	113.0	108.5	70.0	113.6	35.0	100

Ribbed Pipe Caps

SR 1387

LDPE

- Injection-moulded caps with internal ribs
- Meet ANSI and DIN specifications



Part Number	Nominal Diameter	Dimensions (mm)		Colour
		d	H	
12773	-	10.2	16.0	Red
12774	-	12.0	16.0	Red
462573	-	12.7	15.0	Black
12775	-	15.0	20.0	Red
12776	-	16.0	20.0	Red
12849	-	18.0	20.0	Red
1258264	-	20.0	20.0	Grey
12777	-	20.0	20.0	Red
12850	-	22.0	20.0	Red
12779	-	25.0	20.0	Red
1258265	-	26.0	20.0	Grey
12780	-	28.0	26.5	Red
12846	-	30.0	26.5	Red
12956	-	32.0	26.8	Yellow
462574	-	35.0	26.5	Black
12781	-	35.0	28.0	Red
12782	-	38.0	27.0	Red
12616	-	39.3	25.0	Yellow
12957	-	40.0	26.7	Yellow
12783	-	41.5	27.0	Red
462576	-	50.8	29.0	Black
462577	-	54.0	36.0	Black
12982	-	54.0	27.8	Red

Part Number	Nominal Diameter	Dimensions (mm)		Colour
		d	H	
12617	-	63.5	29.0	Yellow
462578	-	63.5	33.0	Yellow
1258266	-	70.0	30.0	Grey
462579	-	75.0	38.0	Black
12618	-	75.0	31.0	Yellow
462580	-	77.0	32.0	Black
462581	-	78.0	32.0	Black
462582	-	79.4	28.0	Black
462583	-	80.5	28.0	Black
12959	-	92.0	34.5	Yellow
462584	-	92.4	32.0	Yellow
10076	-	94.0	40.0	Red
12633	-	95.5	33.0	Yellow
462585	-	96.5	39.0	Red
462586	-	100.3	40.0	Red
12960	-	110.0	34.6	Yellow
12619	-	125.0	35.0	Yellow
12961	-	125.0	34.1	Yellow
12620	-	137.0	35.0	Yellow
1258263	5"	141.3	40.0	Grey

Pipe Chocks

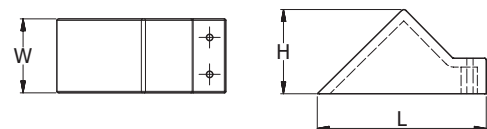
SR 1178

LDPE Orange

- Pipe chocks are used to help secure pipes during transit and storage
- Nails are included with the pipe chocks



Part Number	Dimensions (mm)			Standard Pack Quantity	
	W	L	H	Chock	Nail
498748	69.9	114.3	50.8	50	100
498749	88.9	203.2	76.2	20	60



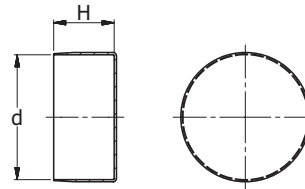
Flexible Pipe Caps

SR 1388

Flexible PE



- Rotational moulded caps in more flexible PE material
- Softer material allows easier fitting on pipe
- Range covers wide range of larger sizes



Part Number	Dimensions (mm)		Nominal Diameter
	d	H	
44100	37.7	45.0	-
34129	50.8	90.0	-
31143	55.7	43.0	-
44029	59.4	52.0	-
41056	60.0	70.0	-
48092	60.3	100.0	DN 50 - 2"
34137	60.3	60.0	DN 50 - 2"
41122	61.0	75.0	-
34140	69.0	36.0	-
48100	70.0	45.0	-
48211	75.0	92.0	-
34148	82.5	40.0	-
34151	86.0	43.0	-
48212	86.0	60.0	-
39866	87.0	42.0	-
601500	88.9	60.0	DN 80 - 3"
34154	92.0	43.0	-
34157	97.0	60.0	-
34156	97.0	43.0	-
34158	100.0	46.0	-
34159	100.0	65.0	-
32709	101.6	100.0	DN 90 - 3½"
34161	103.0	43.0	-
461199	104.0	100.0	-
34163	105.0	43.0	-
34164	107.7	45.0	-
44031	112.7	52.0	-
32710	114.3	100.0	DN 100 - 4"
34169	114.3	50.0	DN 100 - 4"
41113	116.0	60.0	-
41102	117.9	50.0	-
34170	120.9	45.0	-
34171	122.0	45.0	-
32711	127.0	100.0	DN 115 - 4½"
34173	127.0	45.0	DN 115 - 4½"
31641	128.5	90.0	-
34174	136.0	47.0	-
34175	139.7	65.0	DN 125 - 5"
32712	141.3	100.0	-
461038	145.0	20.0	-
34835	148.0	50.0	-
461051	148.5	100.0	-
37010	149.2	8.0	-
32713	152.4	100.0	DN 140 - 5½"
803083	152.4	40.0	DN 140 - 5½"
32714	155.8	100.0	-
32790	159.0	100.0	-
48231	159.5	20.0	-
41180	160.0	47.0	-
34178	160.0	47.0	-
601313	165.1	100.0	-
39565	165.1	40.0	-
34803	168.3	100.0	DN 150 - 6"

Part Number	Dimensions (mm)		Nominal Diameter
	d	H	
34179	168.3	50.0	DN 150 - 6"
34180	171.0	50.0	-
35282	171.0	100.0	-
34839	176.8	74.0	-
34181	177.8	65.0	-
34182	180.0	50.0	-
41057	180.0	100.0	-
34804	185.0	100.0	-
34805	193.7	100.0	-
41139	193.7	40.0	-
34806	200.0	100.0	-
31704	200.0	50.0	-
34184	203.0	120.0	-
34807	210.0	100.0	-
31781	210.0	50.0	-
34841	212.0	78.0	-
31785	216.0	50.0	-
41017	217.1	65.0	-
34808	219.1	100.0	DN 200 - 8"
34809	219.1	120.0	DN 200 - 8"
31733	219.1	55.0	DN 200 - 8"
34186	225.0	55.0	-
34842	230.0	55.0	-
39162	232.0	55.0	-
34187	235.0	55.0	-
34817	236.0	100.0	-
31746	244.5	55.0	-
34189	250.0	60.0	-
41082	260.0	60.0	-
34190	264.0	60.0	-
34191	267.0	60.0	-
41018	271.3	71.0	-
34810	273.0	100.0	DN 250 - 10"
31724	273.0	115.0	DN 250 - 10"
31735	273.0	65.0	DN 250 - 10"
34192	281.0	65.0	-
34193	285.0	65.0	-
34812	286.0	100.0	-
34194	293.0	80.0	-
34818	298.0	80.0	-
34195	300.0	65.0	-
34196	305.0	80.0	-
34197	311.0	70.0	-
34198	315.0	70.0	-
34199	317.0	80.0	-
31789	318.0	70.0	-
41019	322.2	78.0	-
34814	323.9	100.0	DN 300 - 12"
31694	323.9	75.0	DN 300 - 12"
34200	330.0	75.0	-
34201	334.0	75.0	-
48213	335.0	100.0	-
34202	338.0	75.0	-

CONTINUED ON NEXT PAGE

Flexible Pipe Caps *CONTINUED*

SR 1388



Part Number	Dimensions (mm)		Nominal Diameter
	d	H	
34203	343.0	75	-
34204	350.0	80	-
41020	353.8	89	-
34815	355.6	100	DN 350 - 14"
31726	355.6	30	DN 350 - 14"
31685	355.6	80	DN 350 - 14"
34816	360.0	100	-
34205	368.0	160	-
31709	368.0	80	-
31642	376.0	185	-
600777	376.0	80	-
601168	378.0	100	-
34206	381.0	80	-
34207	388.0	80	-
600776	392.0	100	-
34208	394.0	80	-
34209	400.0	75	-
41021	404.1	103	-
34819	406.4	120	DN 400 - 16"
31664	406.4	85	DN 400 - 16"
34820	410.0	120	-
31706	419.0	90	-
41061	429.0	100	-
36407	432.0	80	-
31730	433.0	100	-
601162	440.0	100	-
34210	445.0	90	-
34211	455.0	80	-
48227	457.2	150	DN 450 - 18"
31687	457.2	95	DN 450 - 18"
34212	463.0	75	-
43139	463.0	80	-
34213	470.0	80	-
34214	482.0	80	-
34215	490.0	95	-
34216	495.0	100	-
600001	505.0	100	-
31689	508.0	105	DN 500 - 20"
48226	508.0	170	DN 500 - 20"
600963	512.8	100	-
34217	514.0	80	-
31708	521.0	110	-
31650	530.0	80	-
34218	532.0	80	-
34219	534.0	80	-
600807	550.0	100	-
31710	558.8	115	DN 550 - 22"
34220	564.0	85	-
601127	570.0	85	-
34221	574.0	80	-
34222	585.0	120	-
31729	586.0	90	-
34223	597.0	115	-
31739	609.6	125	DN 600 - 24"
41183	616.0	65	-

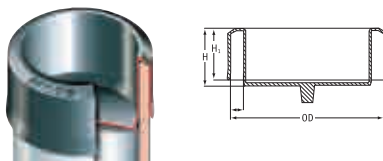
Part Number	Dimensions (mm)		Nominal Diameter
	d	H	
34224	616.0	95	-
31711	622.0	130	-
43236	625.4	-	-
34225	635.0	130	-
34226	648.0	80	-
31713	660.4	135	DN 650 - 26"
34227	667.0	100	-
34228	673.0	135	-
34229	686.0	135	-
31718	711.2	145	DN 700 - 28"
34230	711.2	260	DN 700 - 28"
34231	719.0	105	-
31690	730.0	145	-
34232	736.6	145	-
34233	746.0	150	-
31696	762.0	155	DN 750 - 30"
34234	770.0	115	-
601324	773.2	350	-
34235	793.0	80	-
34236	800.0	155	-
31722	812.8	165	DN 800 - 32"
34237	820.0	120	-
34238	825.0	165	-
34239	851.0	80	-
34240	863.6	170	DN 850 - 34"
34241	872.0	125	-
31728	890.0	170	-
34242	902.0	175	-
31701	914.4	175	DN 900 - 36"
34243	921.0	135	-
34244	965.2	180	DN 950 - 38"
34245	975.0	170	-
41071	1000.0	180	-
31727	1016.0	180	DN 1000 - 40"
34246	1026.0	145	-
31731	1066.8	185	DN 1050 - 42"
34247	1078.0	150	-
34248	1117.8	185	DN 1100 - 44"
34249	1129.0	160	-
600803	1150.0	350	-
600937	1168.0	185	DN 1150 - 46"
31725	1219.2	200	DN 1200 - 48"
34250	1231.0	170	-
461006	1270.0	200	DN 1250 - 50"
41138	1320.8	180	DN 1300 - 52"
34251	1340.0	180	-
39127	1371.6	180	DN 1350 - 54"
43155	1384.7	206	-
34252	1422.4	215	DN 1400 - 56"
34253	1437.0	180	-
41101	1450.0	180	-
44127	1455.0	185	-
34254	1524.0	220	DN 1500 - 60"
34256	1625.6	230	DN 1600 - 64"

PIPE CAPS

Heavy-Duty Recessed Caps

SR 1370

Black LDPE



- Protect pipe bevels and internal walls from corrosion and damage
- Accept crane hooks for moving pipes during storage, transit and laying
- Resistant to temperatures from -30°C to +60°C
- WT is wall thickness

Part Number	To Fit Pipe Specification		Dimensions (mm)				Standard Pack Quantity
	DIN	Nominal Diameter	OD	WT	H	H1	
110423	DN 150	6"	168.3	15.0	100.0	90.0	30
110425	DN 200	8"	219.1	15.0	100.0	90.0	20
110426	DN 200	8"	219.1	23.0	100.0	90.0	20
110427	DN 250	10"	273.0	15.0	100.0	90.0	12
110428	DN 250	10"	273.0	23.0	100.0	90.0	10
110430	DN 300	12"	323.9	15.0	100.0	90.0	25
110432	DN 300	12"	323.9	32.0	100.0	90.0	25
110433	DN 350	14"	355.6	23.0	100.0	90.0	50
110435	DN 400	16"	406.4	23.0	100.0	90.0	50

Flexible Recessed Caps

SR 1371

Yellow PE



- Protect pipe bevels and internal walls from corrosion and damage
- Soft material for easy fitting on large sizes
- Accept crane hooks for moving pipes during storage, transit and laying
- WT is wall thickness

Part Number	To Fit Pipe Specification		Dimensions (mm)			
	DIN	Nominal Diameter	OD	WT	H	H1
31018	DN 180	6"	168.3	28.0	100.0	55.0
34846	DN 200	8"	219.1	23.2	100.0	55.0
34848	DN 250	10"	273.0	18.1	100.0	55.0
34853	DN 300	12"	323.9	26.0	105.0	55.0
34855	DN 350	14"	355.6	28.3	105.0	55.0
34858	DN 400	16"	406.4	26.2	105.0	70.0
34860	DN 450	18"	457.2	26.2	105.0	70.0
34862	DN 500	20"	508.0	27.7	105.0	70.0

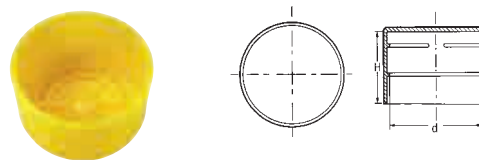
Part Number	To Fit Pipe Specification		Dimensions (mm)			
	DIN	Nominal Diameter	OD	WT	H	H1
34865	DN 600	24"	609.6	20.8	105.0	80.0
31130	DN 650	26"	660.4	15.4	105.0	80.0
34867	DN 700	28"	711.2	22.7	105.0	80.0
34868	DN 750	30"	762.0	28.0	105.0	90.0
34869	DN 800	32"	812.8	22.6	105.0	90.0
31138	DN 1000	40"	1016.0	26.5	130.0	110.0

Heavy Duty Pipe Caps

SR 1389

Black and Yellow LDPE

- Reinforced design
- Fit smaller pipe sizes



Part Number	Nominal Diameter	Dimensions (mm)		Colour
		d	H	
12080	-	19.0	12.7	Yellow
12081	½"	21.4	17.2	Yellow
12082	-	22.2	17.7	Yellow
12084	-	25.4	22.0	Yellow
50248	-	27.0	25.4	Black
12085	¾"	27.0	25.4	Yellow
10275	-	31.8	25.4	Yellow
10677	1"	33.4	24.8	Yellow
12086	-	34.1	22.8	Yellow
11356	-	35.0	24.6	Yellow
10989	-	38.0	28.4	Yellow
51061	-	41.3	26.6	Black
11118	-	41.3	26.6	Yellow
60606	1¼"	42.9	25.4	Black
12087	1¼"	42.9	25.4	Yellow

Part Number	Nominal Diameter	Dimensions (mm)		Colour
		d	H	
11236	-	44.5	26.6	Yellow
11360	-	47.7	28.4	Yellow
51200	1½"	48.3	27.0	Black
11238	1½"	48.3	27.0	Yellow
10146	-	50.8	24.3	Yellow
10834	1¾"	54.0	28.4	Yellow
11217	-	57.2	25.4	Yellow
51109	2"	60.3	26.6	Black
10195	2"	60.3	26.6	Yellow
10648	-	63.5	30.4	Yellow
11337	-	70.0	30.0	Yellow
86470	2½"	76.1	31.0	Black
11198	2½"	76.1	31.0	Yellow
11408	-	82.5	31.0	Yellow

Bevel Edge Protectors and Plugs

SR 1360

Bevel Edge Protector – Steel Bevel

Pipe Plug – PE/Flexible PE

- Bevel protector designed for use with pipes from 8” to 120”
- The bevel protector is easy to apply by pushing onto the pipe-end and hammering down the clamping system
- The clamping system will expand and force the protector against the inner pipe surface
- Bevel protector combines with pipe plug in sizes 8” to 64” for optimal protection and pipe closure
- Pipe plug has depth of at least 100mm to accept crane hook
- The steel bevel protector keeps the pipe plug firmly in position during handling, transportation and storage
- Available with a corrosion inhibitor to protect inside pipe against damage from moisture

Part Numbers listed in tables refer only to the plug.

We recommend that you contact our office to select the clamping system to fit your requirement.



Figure 1
Steel bevel protector and pipe plug



Figure 2
Steel bevel protector and pipe plug combined together in a pipe-end, sealing the pipe completely



Figure 3
Clamping system of the steel bevel protector



Figure 4
By giving a few taps with a hammer on top of the clamping system the bevel protector expands and forces itself against the inner pipe surface

Part Number	Nominal Pipe Size	Pipe Wall Thickness (mm)	Plug Diameter (mm)	Height (mm)
41023	16"	25.4	355.6	105
41114	16"	12.7	381.0	105
464623	16"	6.4	393.7	200
601482	18"	25.4	406.4	55
601258	18"	19.1	419.1	105
41024	18"	12.7	431.8	105
601134	18"	9.3	438.6	150
464621	18"	6.4	444.5	200
41130	20"	25.4	457.2	105
601257	20"	19.1	469.9	105
41116	20"	12.7	482.6	105
601530	20"	6.4	495.3	105
41140	22"	25.4	508.0	105
41026	22"	12.7	533.4	105
41045	24"	25.4	558.8	105
41027	24"	12.7	584.2	105
44115	26"	25.4	609.6	105
41028	26"	12.7	635.0	105
461580	28"	25.4	660.4	105
41029	28"	12.7	685.8	105
41031	30"	25.4	711.2	105
41030	30"	12.7	736.6	105

Part Number	Nominal Pipe Size	Pipe Wall Thickness (mm)	Plug Diameter (mm)	Height (mm)
461082	32"	25.4	762.0	110
41032	32"	12.7	787.4	105
601267	32"	6.4	800.1	105
44122	34"	25.4	812.8	105
41033	34"	12.7	838.2	105
48215	36"	25.4	863.6	105
41034	36"	12.7	889.0	105
464619	38"	25.4	914.4	200
41035	38"	12.7	939.8	105
461081	40"	25.4	965.2	105
41036	40"	12.7	990.6	105
461080	42"	25.4	1016.0	105
41037	42"	12.7	1041.4	105
601321	44"	25.4	1066.8	105
41038	44"	12.7	1092.2	105
41039	46"	12.7	1143.0	105
461079	48"	25.4	1168.4	105
41072	48"	12.7	1193.8	105
601140	50"	12.7	1244.6	105
41129	52"	12.7	1295.4	105
41125	54"	12.7	1346.2	105
464654	56"	25.4	1371.6	105
41126	56"	12.7	1397.0	105

Face Self-Adhesive Discs

SR 1361

Black Rubber

- Provide full flange face protection
- Ozone and weather resistant
- Withstand temperatures from -15°C to +70°C
- Resistant to petrol, oil and non-oxidisation acids
- Available with holes for internal bore sand blasting
- Standard thickness 1.5mm



ANSI

Part Number	Nominal Diameter	Disc Diameter (mm)
48326	½"	36.0
48327	¾"	45.0
48328	1"	54.0
48329	1½"	75.0
48330	2"	95.0
48362	2½"	115.0
48331	3"	130.0
48332	4"	160.0
48333	5"	200.0
48334	6"	220.0
48335	8"	275.0
48336	10"	330.0
48337	12"	390.0
48338	14"	415.0
48339	16"	475.0
48340	18"	540.0
48341	20"	590.0
600049	22"	642.0
48342	24"	700.0
43899	26"	750.0
44003	28"	810.0
464559	30"	857.2
44007	36"	1022.0

DIN

Part Number	Nominal Diameter	Disc Diameter (mm)
48311	DN 10	40.0
48312	DN 15	45.0
48313	DN 20	58.0
48314	DN 25	68.0
48315	DN 32	78.0
48316	DN 40	88.0
48317	DN 50	102.0
48318	DN 65	122.0
48319	DN 80	138.0
48320	DN 100	158.0
48321	DN 125	188.0
48322	DN 150	212.0
48323	DN 200	268.0
48324	DN 250	320.0
48325	DN 300	380.0
48163	DN 350	450.0
48237	DN 400	505.0
464626	DN 500	615.0
464516	DN 600	692.0
461120	DN 800	910.0

Alternative Sizes

Part Number	Disc Diameter (mm)
462878	38.0
48171	47.0
48250	51.0
601437	62.5
600062	70.0
601552	72.0
43267	90.0
48359	92.0
48360	105.0
48235	110.0
601554	124.0
601173	125.0
48363	127.0
552320	152.4
601556	156.0
601398	168.0
600956	180.0
601557	182.0
48370	217.0
48233	223.0
601558	247.0
600967	250.0
48083	255.0
461935	270.0
552322	292.0
601498	300.0
601175	308.0
48216	325.0
48383	340.0
552324	346.0
601881	356.0
601882	362.0
48134	385.0
552325	406.4
464641	430.0
48197	435.0
48251	470.0
48392	490.0
48249	535.0
601340	584.0
461941	585.0
552328	622.3
552329	660.4
600115	774.0
600808	780.0
552330	793.8
464642	885.0
464519	914.0
601569	1085.0
462889	1100.0
44010	1170.0
601801	1194.0
552158	1333.0
601802	1359.0
601803	1511.0
601822	2197.0

Face Protectors

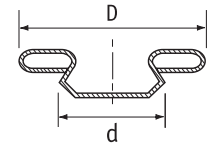
SR 1354

Yellow Polyethylene

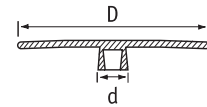
- Protect against dirt, moisture, paint and sand blasting
- Suitable for DIN and ANSI flanges



Type 1



Type 2



Type 3



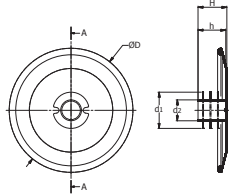
Part Number	Type	Nominal Diameter	Dimensions (mm)		
			D	d	H
31648	2	DN 15 ½"	45.0	15.8	-
31653	2	DN 20 ¾"	58.0	20.8	-
34325	2	DN 25 1"	68.0	26.0	-
31649	2	DN 32 1¼"	78.0	33.5	-
34326	2	DN 40 1½"	88.0	41.5	-
32440	1	DN 50 2"	102.0	49 - 55	-
110295	2	DN 50 2"	103.0	51.0	-
32441	1	DN 65 2½"	122.0	63 - 70	-
32442	1	DN 80 3"	138.0	76 - 83	-
32443	1	DN 100 4"	162.0	100 - 107	-
34335	1	-	165.0	90 - 100	-
32444	1	DN 125 5"	188.0	123 - 132	-
32445	1	DN 150 6"	218.0	149 - 159	-
34337	1	-	245.0	140 - 150	-
32446	1	DN 200 8"	285.0	196 - 207	-
34338	1	-	310.0	185 - 200	-
32447	1	DN 250 10"	345.0	247 - 260	-
32448	1	DN 300 12"	410.0	295 - 310	-
32449	1	DN 350 14"	465.0	325 - 341	-
32450	1	DN 400 16"	530.0	374 - 392	-
32451	1	DN 450 18"	570.0	424 - 443	-
32452	1	DN 500 20"	625.0	472 - 494	-
34370	1	DN 600 24"	725.0	570 - 596	-
494283	3	DN 15 ½"	45.0	19.0	16.5
494284	3	DN 20 ¾"	58.0	24.0	16.5
494285	3	DN 25 1"	70.0	30.0	19.5
494286	3	DN 32 1¼"	78.0	39.0	29.5
494287	3	DN 40 1½"	88.0	45.0	29.5
494288	3	DN 50 2"	102.0	56.0	29.5
494289	3	DN 65 2½"	122.0	72.0	34.5
494290	3	DN 80 3"	138.0	85.0	34.5
494291	3	DN 100 4"	163.0	119.0	36.5
494292	3	DN 125 5"	190.0	143.0	36.5
494293	3	DN 150 6"	215.0	170.0	36.5
494294	3	DN 200 8"	270.0	221.0	41.5
494295	3	DN 250 10"	345.0	275.0	41.5
494296	3	DN 300 12"	408.0	325.0	41.5

Full-Face Flange Protectors

SR 1365

Yellow LDPE

- Flexible fins ensure snug fit into bores
- For flanges to DIN 2627-2638,150, BS5504 and ANSIB16, 5



Part Number	DIN	Nominal Bore	Dimensions (mm)					Standard Pack Quantity
			d2	d1	D	h	H	
552067	DN10	3/8"	6.8	14.2	86.0	20.0	21.0	800
552068	DN15	1/2"	8.5	19.0	90.0	20.0	21.0	500
552069	DN20	3/4"	13.0	24.0	100.0	20.0	21.0	350
552070	DN25	1"	18.0	30.0	110.0	24.0	25.0	300
552071	DN32	1 1/4"	23.0	39.0	136.0	30.0	32.0	200
552072	DN40	1 1/2"	30.0	45.5	146.0	30.0	32.0	200
552073	DN50	2"	40.0	56.5	160.0	30.0	32.0	100
552074	DN65	2 1/2"	53.0	72.5	180.0	34.0	36.0	80
552075	DN80	3"	66.0	85.5	196.0	34.0	36.0	75
552076	DN100	4"	86.0	110.0	216.0	44.0	46.0	50
552077	DN125	5"	110.0	134.0	246.0	44.0	46.0	35
552078	DN150	6"	139.0	163.0	280.0	48.0	50.0	25
552079	DN200	8"	186.0	210.0	336.0	50.0	52.0	16
552080	DN250	10"	237.0	263.0	403.0	50.0	52.0	7
1258269	DN300	12"	284.0	319.0	450.0	-	48.5	10

Flange Covers

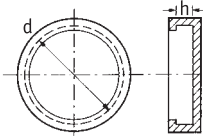
SR 1353

Yellow Flexible Polyethylene

DIN

Part Number	Nominal Diameter	Series Pressure Group (Bar)	Dimensions (mm)	
			d	h
34278	DN 10	6	75.0	10.0
34281		25, 40	90.0	14.0
34279		6	80.0	10.0
34282	DN 15	10, 16	95.0	12.0
110318*		25, 40	95.2	14.2
34301		-	95.0	16.0
110317*	DN 20	6	90.0	12.0
31996		10, 16	105.0	14.0
32259		25, 40	105.0	16.0
110319*	DN 25	6	100.2	12.2
31967		10, 16	115.0	14.0
32260		25, 40	115.0	16.0
32261	DN 32	6, 10	120.0	12.0
31968		-	140.0	14.0
32264		16	140.0	16.0
34303	DN 40	25, 40	140.0	18.0
32262		6	130.0	11.0
32265		10, 16	150.0	13.0
110322*	DN 50	-	150.5	15.0
34304		25, 40	150.0	17.0
32263		6	140.0	11.0
32267	DN 65	10, 16	165.0	15.0
31970		25, 40	165.0	17.0
32266		6	160.0	11.0
31971	DN 80	10, 16	185.0	15.0
32268		25, 40	185.0	19.0
31972		10, 16	200.0	17.0
32270	DN 100	25, 40	200.0	21.0
34306		-	200.0	24.0
32271		6	210.0	13.0
31973	DN 125	10, 16	220.0	17.0
34307		-	220.0	21.0
34308		-	220.0	24.0
32272	DN 150	25, 40	235.0	21.0
32273		6	240.0	15.0
31921		10, 16	250.0	19.0
31652	DN 200	-	250.0	25.0
32275		25, 40	270.0	23.0
32274		6	265.0	15.0
31915	DN 250	10, 16	285.0	19.0
34310		-	285.0	22.0
34311		-	285.0	24.0
34312	DN 300	-	285.0	29.0
34283		25, 40	300.0	25.0

- Ideal for protecting internally-coated flanges
- Provide complete all-round flange protection
- Cover ANSI B 16.5, DIN 2631-2635 and BS4504
- Easy to fit
- Durable and flexible
- Also protect bolt holes
- Suit all types of flange faces



Part Number	Nominal Diameter	Series Pressure Group (Bar)	Dimensions (mm)	
			d	h
34284	DN 175	10, 16	315.0	21.0
31917		25	330.0	25.0
31916		6	320.0	17.0
32310	DN 200	10, 16	340.0	21.0
34314		-	340.0	24.0
31651		-	340.0	32.0
34286	DN 250	25	360.0	27.0
34288		40	375.0	31.0
34287		6	375.0	19.0
34289	DN 300	10	395.0	23.0
34315		-	395.0	28.0
32311		16	405.0	23.0
34290	DN 350	25	425.0	29.0
34292		40	450.0	35.0
34291		6	440.0	18.0
31922	DN 400	10	445.0	22.0
34316		-	445.0	30.0
32312		16	460.0	24.0
31874	DN 450	25	485.0	30.0
34295		40	515.0	38.0
32320		10	505.0	22.0
34296	DN 500	16	520.0	26.0
34297		6	540.0	18.0
32321		10	565.0	22.0
34299	DN 600	16	580.0	28.0
32276		25	620.0	36.0
32278		40	660.0	46.0
32322	DN 700	10	670.0	24.0
32281		16	715.0	30.0
32282		25	730.0	40.0
31942	DN 800	40	749.3	46.0
32307		16	840.0	31.0

*Injection-moulded flange cover

CONTINUED ON NEXT PAGE

FLANGE PROTECTION

Flange Covers *CONTINUED*

SR 1353

ANSI

Part Number	Nominal Diameter	Series Pressure Group (lbs)	Dimensions (mm)	
			d	h
31836	½"	150	88.9	11.2
110318*		300/400/600	95.2	14.2
31963		300/400/600	95.2	14.2
34258		900/1500	120.6	22.3
31837	¾"	150	98.6	12.7
31965		300/400/600	117.3	15.7
31896		900/1500	130.0	25.4
110320*	1"	150	108.0	14.2
31938		300/400/600	124.0	17.5
31891	1¼"	900/1500	149.3	28.4
34260		300	133.4	19.0
110321*	1½"	150	127.0	17.5
31793		150	127.0	17.5
31886		300	155.4	20.6
32284		400/600	155.4	22.4
31892	2"	900/1500	177.8	31.7
110323*		150	152.4	19.1
31791	2"	150	152.4	19.1
110324*		300	165.5	22.5
31783		300	165.5	22.5
32285		400/600	165.1	25.4
32293	2½"	900/1500	215.9	38.1
32313		150	177.8	22.4
31888	3"	300	190.5	25.4
31890		400/600	190.5	28.4
31766		150	190.5	23.9
31867		300	209.5	28.4
32286	3"	400/600	209.5	31.8
32294		900	241.3	38.1
34319	3½"	1500	270.0	51.5
34262		150	215.9	23.9
34263		300	228.6	30.2
31763		150	228.6	23.9
31868	4"	300	254.0	31.7
32287		600	273.1	38.1
32291		900	292.1	44.4
34322		2500	356.0	76.0
34265	5"	150	254.0	23.9
34266		300	279.4	35.0
34267		600	330.2	44.5
31760		150	279.4	25.4
31869	6"	300	317.5	36.5
32296		600	355.6	47.8
31647		900	381.0	55.6
31870		150	342.9	28.4
34321	8"	-	343.0	33.0
31871		300	381.0	41.1
32298		600	419.1	55.6
32299		900	469.9	63.5
34323	10"	1500	479.0	93.0
34324		2500	551.0	111.0
31872		150	406.4	30.2
31873		300	444.5	47.7
32300	12"	600	508.0	63.5
32303		900	546.1	69.8
31874		150	485.0	30.0
31875		300	520.7	50.8
32301	14"	600	558.8	66.5
32302		900	609.6	79.2
31876		150	533.4	35.1
31847		300	584.2	53.8
34268	16"	600	603.3	69.9
31877		150	596.9	36.6
31878		300	647.7	57.1
34270		600	685.8	76.2
34271	900	704.8	88.9	

*Injection-moulded flange cover

Flange Protectors

SR 1355

Black LDPE



Part Number	Nominal Diameter	Series Pressure Group (lbs)
43607*	½"	150
34352	½"	300/600
498759	½"	900
43608*	¾"	150
34353	¾"	300/600
498765	¾"	900
43609*	1"	150
34354	1"	300/600
498760	1"	900
34343	1¼"	150
34355	1¼"	300/600
498758	1¼"	900
43610*	1½"	150
34356	1½"	300/600
498757	1½"	900
43611*	2"	150
39701	2"	300/600
498764	2"	900
43612*	2½"	150
34358	2½"	300/600
43613*	3"	150
34359	3"	300/600
498766	3"	900
43614*	4"	150
34361	4"	300
498773	4"	600
498767	4"	900
43615*	6"	150
34362	6"	300
498774	6"	600
498768	6"	900
43616*	8"	150
498770	8"	300
498775	8"	600
498769	8"	900
43617*	10"	150
498771	10"	300
498755	10"	600
498761	10"	900
43618*	12"	150
498772	12"	300
498756	12"	600
498762	12"	900

*Variations in style - give protection to flange face and area surrounding bolt holes.

ANSI

Part Number	Nominal Diameter	Series Pressure Group (lbs)	Dimensions (mm)	
			d	h
31879	18"	150	635.0	39.6
31880		300	711.2	60.4
34272		600	743.0	82.6
34273	20"	900	787.4	101.6
31881		150	698.5	42.9
31882		300	774.7	63.5
34274		600	812.8	88.9
34275	22"	900	857.2	107.9
31942		150	749.3	46.0
31943	24"	150	812.8	47.8
32088		300	914.4	69.8
34276		600	930.0	98.0
34277		900	1041.4	139.7

SAE Flange Protectors with groove for O-ring

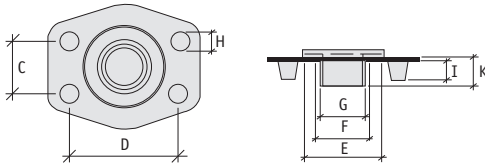
SR L-0000

LDPE - Yellow

PP - Blue



- Protective cover for SAE flat
- Protect hole, flat surface and screw holes
- To use with PSI 3000 and PSI 6000 applications



Part Number	Nominal Diameter	Colour	PSI	Dimensions (mm)								Standard Pack Quantity
				C	D	E	F	G	H	I	K	
3471000	½"	Yellow	3000	18.0	38.5	27.5	17.0	12.5	5.0	8.0	10.5	500
3471100	½"	Blue	3000	18.0	38.5	27.5	17.0	12.5	5.0	8.0	10.5	500
3472000	¾"	Yellow	3000	22.5	48.0	33.3	24.0	18.5	7.0	8.0	11.0	500
3472100	¾"	Blue	3000	22.5	48.0	33.3	24.0	18.5	7.0	8.0	11.0	500
3473000	1"	Yellow	3000	26.7	52.0	41.2	32.5	25.3	7.0	8.0	11.0	250
3473100	1"	Blue	3000	26.7	52.0	41.2	32.5	25.3	7.0	8.0	11.0	250
3474000	1¼"	Yellow	3000	30.5	59.0	45.8	37.0	32.0	7.0	8.0	11.0	250
3474100	1¼"	Blue	3000	30.5	59.0	45.8	37.0	32.0	7.0	8.0	11.0	250
3474500	¾"	Yellow	6000	23.8	50.0	34.0	24.0	18.0	5.0	8.0	11.5	500
3474600	1"	Yellow	6000	28.3	58.5	20.0	16.3	-	8.0	10.0	-	200
3474700	1¼"	Yellow	6000	32.0	67.3	45.5	36.4	32.5	10.0	10.0	5.0	250
3474800	1½"	Yellow	6000	31.5	80.0	50.8	41.0	37.3	12.5	14.3	9.0	100

SAE High-Pressure Flange Protectors

SR 1076

Polyethylene



3000 Series - Blue, 6000 Series - Red

Part Number	Nominal Diameter	Series Pressure Group (lbs)
34371	½"	3000
498754	½"	6000
34372	¾"	3000
34382	¾"	6000
34373	1"	3000
34383	1"	6000
34374	1¼"	3000
34384	1¼"	6000
34375	1½"	3000
34385	1½"	6000
34376	2"	3000
34386	2"	6000
34377	2½"	3000
498751	3"	3000
498752	4"	3000

QUESTIONS?
**WE ARE HERE
TO HELP...**

Visit us online for more information. Our Customer Service advisors can also help you find the right product for your application.

**CALL
0845 758
5070**

www.essentracomponents.co.uk

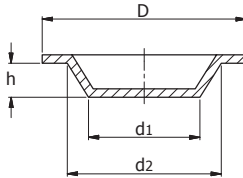


FLANGE PROTECTION

Raised-Face Protector Plugs

SR 1372

Polyethylene
Black



- Meets ANSI/ASME B16.5 Specifications
- Protects petroleum, gas and water type valve flanges
- Protects raised machine face and pipe interior from dirt and moisture during shot and sandblasting operations
- Bolt holes are not covered by flange plugs
- Tapered plug design fits snugly into the pipe's interior
- Requires no fasteners

Part Number	Nominal Pipe Size	Dimensions(mm)				Standard Pack Quantity
		d1	d2	D	h	
FPR1A	1	28	29.4	52.8	9.5	2000
FPR2A	2	52.1	52.7	96.6	11.2	400
FPR2-½A	2½	63.2	63.8	109.6	12.2	400
FPR3A	3	77	79	132	18.5	450
FPR4A	4	101.5	104	166.4	23.5	250
FPR5A	5	126.7	129	189.9	27.2	175
FPR6A	6	151.1	153.7	223.8	32.1	100
FPR8A	8	203.2	205	279.9	32.4	70
FPR10A	10	253.9	257.8	328.3	33.8	50
FPR12A	12	305.1	308.7	386.5	33.8	35

Adhesive Peel and Stick Full-Face Protectors

SR 1373

Polyethylene
Black



- Meets ANSI B16.5 and ASME B16.47 specification
- 150lb rating
- Adhesive backed, peel and stick design
- Full-faced O.D flange protection
- Special adhesive bonds tightly and leaves no residue under normal conditions
- Requires no fasteners

Part Number	Nominal Pipe Size (ins)	O.D (mm)	Standard Pack Quantity
PG150-½A	½"	88.9	50
PG150-¾A	¾"	98.4	25
PG150-1A	1"	108.0	50
PG150-1-¼A	1¼"	117.5	50
PG150-1-½A	1½"	127.0	50
PG150-2A	2"	152.4	50
PG150-2-½A	2½"	177.8	50
PG150-3A	3"	190.5	50
PG150-3-½A	3½"	215.9	25
PG150-4A	4"	228.6	50
PG150-5A	5"	254.0	50

Part Number	Nominal Pipe Size (ins)	O.D (mm)	Standard Pack Quantity
PG150-6A	6"	279.4	25
PG150-8A	8"	342.9	25
PG150-10A	10"	406.4	25
PG150-12A	12"	482.6	25
PG150-14A	14"	533.4	25
PG150-16A	16"	596.9	25
PG150-18A	18"	635.0	25
PG150-20A	20"	698.5	10
PG150-24A	24"	812.8	10
PG150-30A	30"	984.3	10
PG150-36A	36"	1168.4	10

OUR SOLUTIONS

We know what matters to you: reliability, global distribution, and of course, consistent quality products. Our pipe and flange protection and component solutions are at work throughout the global Oil & Gas market. From flange, pipe and thread protection, through to protecting pipes in transport, we have a wide range of solutions to suit your application.



PIPE PROTECTION

Our technologies give you the protection you need. Our caps and plugs give you a choice of styles while preventing foreign material from contaminating your pipes, reducing your downtime.



RIBBED PIPE CAPS

Provide a positive grip over the outside of the pipe's diameter, protecting your pipe from foreign material.

APPLICATION: Suitable for NPT Line Pipe (½"–6") and Drill Pipe (2¾"–6½")



FLEXIBLE PIPE CAPS

Ideal for extreme temperatures, from -40°C to +66°C, our flexible pipe caps give you outstanding toughness and puncture resistance. Offering good flexibility, our caps won't crack or split under normal use.

APPLICATION: Suitable for NPT Line Pipe (2"–64") and DN Line Pipe (DN 50–DN 1,600)



HEAVY DUTY RECESSED PIPE CAPS

Our heavy-duty recessed pipe caps protect pipe bevels and internal walls from corrosion and damage. They accept crane hooks for moving pipes.

APPLICATION: Suitable for NPT Line Pipe (6"–16") and DN Line Pipe (DN 150–DN 400)



FLEXIBLE RECESSED CAPS

Protect pipe bevels and internal walls from corrosion and damage with these ultra tough, puncture-resistant caps. Suitable for crane hooks.

APPLICATION: Suitable for NPT Line Pipe (6"–40") and DN Line Pipe (DN 180–DN 1,000)

FLANGE PROTECTION

The raised machine face on a flange is the critical area that you need to protect. We can help you do just that with our raised and full face flange protection products, in a range of styles.



FULL AND RAISED FACE PUSH IN PROTECTORS

Simply push the protectors into the bore without any fasteners for a snug, easy fit. Beyond the protection of the machined surface, it prevents dirt and moisture from entering the bore.

APPLICATION: Suitable for DIN Flanges (DN 10–DN 300) and ANSI Flanges (½"–12")



FULL FACE ALL-AROUND FLANGE COVERS

All-around flange protection, preventing any contamination of the bore and protecting bolt holes. Its durable and flexible material also provides excellent temperature resistance in extreme climates.

APPLICATION: Suitable for DIN Flanges (DN 10–DN 600) and ANSI Flanges (½"–24")



ADHESIVE FLANGE PROTECTORS FOR FULL AND RAISED FACE FLANGES

Apply with just an easy peel and stick. Its engineered adhesive bonds tightly to the flange, leaving no residue when removed under normal conditions. An economical solution that comes in ozone- and weather-resistant versions.

APPLICATION: Suitable for DIN Flanges (DN 10–DN 800) and ANSI Flanges (½"–36")



RAISED FACE STUDDED FLANGE PROTECTORS

Provides a quick fit with a simple push to install. Weather and oil resistant and compatible with a wide range of media.

APPLICATION: Suitable for ANSI Flanges (½"–12")