



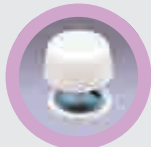
ESSENTRA COMPONENTS

KEEP YOUR FURNITURE AND EQUIPMENT PROTECTED

- Secure your products from damage during transit with our range of protection solutions
- Economical and easy ways to keep your furniture safe, secure and as new
- Use our screw and nut cover caps to maintain high quality finish of your product



760



764



765



766



767



769



772



773



774



775

MORE THAN
550
FURNITURE
AND TRANSIT
PROTECTION
PRODUCTS
AVAILABLE

FURNITURE AND TRANSIT PROTECTION



SCREW AND NUT COVER CAPS

760



TRANSIT PROTECTION

772

SCREW AND NUT COVER CAPS

Socket Head Screw Caps

SR 1813

LDPE

- Quick and neat finishing for inside hexagon screws
- Provides protection against dust and dirt



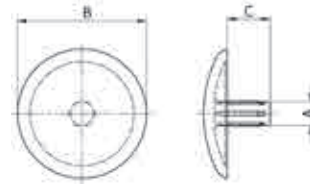
Part Number			To fit socket head cap screw	Dimensions (mm)				Standard Pack Quantity
Grey	White	Black		B	C	D	E	
039000500203	039000511303	039000522003	M5	4.2	9	2.5	1.3	1000
039000600203	039000611303	039000622003	M6	5.2	10	3.1	1.4	1000
039000800203	039000811303	039000822003	M8	6.2	13	4.0	1.5	1000
039001000203	039001011303	039001022003	M10	8.2	16	5.0	1.6	500
039001200203	039001211303	039001222003	M12	10.3	18	6.4	1.8	500
039001600203	039001611303	039001622003	M16	14.4	24	7.0	2.2	500
039002000203	039002011303	039002022003	M20	17.4	30	9.0	2.5	500

Rivet Caps

SR 1814

LDPE

- Quick and neat finish for screws



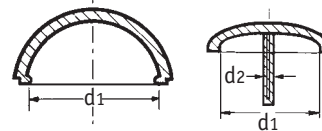
Part Number		Dimensions (mm)			Standard Pack Quantity
White	Black	A	B	C	
064251211303	064251222003	2.5	12	4	1000
064261260003	064261269903	2.6	12	6	1000
064321260003	064321269903	3.2	12	6	1000
064321560003	064321569903	3.2	15	6	1000

Blind Rivet Caps

SR 1804

HDPE

- Remains flexible and is resistant to changing weather conditions



Part Number				Dimensions (mm)		Standard Pack Quantity
Black	White	Beige	Grey	d1	d2	
065180711404	065180716404	065180715404	065180731804	6.8	1.9	500
065181011404	065181016404	-	065181031804	10.2	1.85	500
065230811404	065230816404	065230815404	065230831804	8.4	2.3	500
065231311404	065231316404	-	065231331804	12.7	2.3	500
065271011404	065271016404	065271015404	065271031804	10.1	2.7	500
065271511404	065271516404	065271515404	065271531804	14.6	2.7	500
065281269903	065281260003	-	-	11.4	2.8	1000
065321311404	065321316404	065321315404	-	12.6	3.2	500
065371311404	065371316404	-	-	13.3	3.7	500

Torx Caps

SR 1816

LDPE

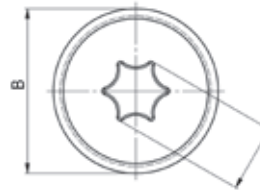
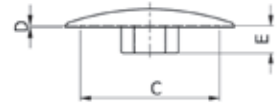
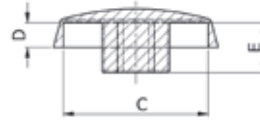
- Quick and neat finish of various torx screws
- Type 1 for non-countersunk screws
- Type 2 for countersunk screws



Type 1



Type 2



Torx No.



Torx No.

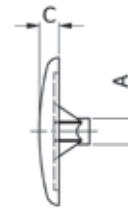
Part Number			Type	Torx Size	Dimensions (mm)				Standard Pack Quantity
Black	Grey	White			B	C	D	E	
158000559903	158000531803	158000516403	1	25	16.5	13	2.7	4.1	500
158001059903	158001031803	158001016403	1	30	16.5	14.4	3.3	1.6	500
158001559903	158001531803	158001516403	1	40	16.2	14.2	2.6	4.8	500
158010559903	158010531803	158010516403	2	10	12.0	-	0	1.2	500
158011059903	158011031803	158011016403	2	15	12.0	-	1.6	1.5	500
158011559903	158011531803	158011516403	2	20	11.5	-	2.1	1.6	500
158012059903	158012031803	158012016403	2	25	14.6	12.8	0.3	2.4	500
158012559903	158012531803	158012516403	2	30	16.2	13.5	0.5	2.4	500
158013059903	158013031803	158013016403	2	40	18.0	15.2	0.1	2.4	500

Pozidrive Screw Caps

SR 1815

LDPE

- Quick and neat finish for screws
- Available in various colours



RAL Colours

Pure White
9010



Silver Grey
7001



Ochre Brown
8001



Chocolate Brown
8017



Clay Brown
8003



Black
9005



Part Number	Colour/RAL	Pozidrive Screw Size	Dimensions (mm)			Standard Pack Quantity
			A	B	C	
119000260003	Pure White/9010	No.2	2.0	12.0	1.6	1000
119000261003	Silver Grey/7001	No.2	2.0	12.0	1.6	1000
119000268003	Ochre Brown/8001	No.2	2.0	12.0	1.6	1000
119000268103	Clay Brown/8003	No.2	2.0	12.0	1.6	1000
119000268203	Chocolate Brown/8017	No.2	2.0	12.0	1.6	1000
119000269903	Black/9005	No.2	2.0	12.0	1.6	1000
119000360003	Pure White/9010	No.3	3.0	15.0	2.0	1000
119000361003	Silver Grey/7001	No.3	3.0	15.0	2.0	1000
119000368003	Ochre Brown/8001	No.3	3.0	15.0	2.0	1000
119000368103	Clay Brown/8003	No.3	3.0	15.0	2.0	1000
119000368203	Chocolate Brown/8017	No.3	3.0	15.0	2.0	1000
119000369903	Black/9005	No.3	3.0	15.0	2.0	1000

Printing limitations may prevent exact colour representation.

NEW

HERE ARE A FEW OF OUR **NEW** **PRODUCTS**



**CAPS &
PLUGS**

Pages 10-65



**HYDRAULIC
& PNEUMATIC
PROTECTION**

Page 66-89



**CABLE TIES
& CLIPS**

Page 206-293



**CABLE
MANAGEMENT**

Page 294-359



**LOCKS,
LATCHES,
CATCHES
& HINGES**

Page 374-507



**FASTENERS
& FIXINGS**

Page 776-870

OVER 30,000 PRODUCTS ONLINE. VISIT OUR WEBSITE!

www.essentracomponents.co.uk

Unicaps

SR 1801

Polypropylene

- Cap and washer conceals and protects exposed screws or bolts
- Available in a wide variety of colours

Standard Colours



Metallised Colours



*These colours may not be available from stock, please contact our sales team for more information. Printing limitations may prevent exact colour representation.

High Profile Caps

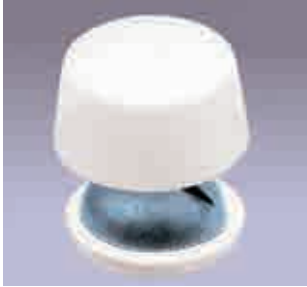
Part Number	Colour	Dimensions (mm)		To Fit Screw Gauge	Standard Pack Quantity
		Height	Outside Diameter		
35700	White	6.5	16.3	Up to 12 (M5)	2500
35706	Off White	6.5	16.3	Up to 12 (M5)	2500
35710	Stone	6.5	16.3	Up to 12 (M5)	2500
35729	Teak	6.5	16.3	Up to 12 (M5)	2500
35766	Orange	6.5	16.3	Up to 12 (M5)	2500
35770	Morning Grey	6.5	16.3	Up to 12 (M5)	2500
35771	Pantone Grey	6.5	16.3	Up to 12 (M5)	2500
35772	Silver Grey	6.5	16.3	Up to 12 (M5)	2500
35773	Flint	6.5	16.3	Up to 12 (M5)	2500
35774	Osprey	6.5	16.3	Up to 12 (M5)	2500
35780	Black	6.5	16.3	Up to 12 (M5)	2500
35781	Stainless Steel	6.5	16.3	Up to 12 (M5)	2500
35782	Silver	6.5	16.3	Up to 12 (M5)	2500

SCREW AND NUT COVER CAPS

Unicaps CONTINUED

SR 1801

Polypropylene



High-profile caps



Low-profile caps



36403



36400

Low Profile Caps

Part Number	Colour	Dimensions (mm)		To Fit Screw Gauge	Standard Pack Quantity
		Height	Outside Dia.		
13000	White	4.2	10.0	3 (M3)	2500
13006	Off White	4.2	10.0	3 (M3)	2500
13010	Stone	4.2	10.0	3 (M3)	2500
13029	Teak	4.2	10.0	3 (M3)	2500
13066	Orange	4.2	10.0	3 (M3)	2500
13070	Morning Grey	4.2	10.0	3 (M3)	2500
13071	Pantone Grey	4.2	10.0	3 (M3)	2500
13072	Silver Grey	4.2	10.0	3 (M3)	2500
13073	Flint	4.2	10.0	3 (M3)	2500
13074	Osprey	4.2	10.0	3 (M3)	2500
13080	Black	4.2	10.0	3 (M3)	2500
13081	Stainless Steel	4.2	10.0	3 (M3)	2500
13082	Silver	4.2	10.0	3 (M3)	2500
13083	Gold	4.2	10.0	3 (M3)	2500
13200	White	4.5	13.2	Up to 8 (M4)	2500
13206	Off White	4.5	13.2	Up to 8 (M4)	2500
13210	Stone	4.5	13.2	Up to 8 (M4)	2500
13229	Teak	4.5	13.2	Up to 8 (M4)	2500
13270	Morning Grey	4.5	13.2	Up to 8 (M4)	2500
13271	Pantone Grey	4.5	13.2	Up to 8 (M4)	2500
13272	Silver Grey	4.5	13.2	Up to 8 (M4)	2500
13273	Flint	4.5	13.2	Up to 8 (M4)	2500
13274	Osprey	4.5	13.2	Up to 8 (M4)	2500
13280	Black	4.5	13.2	Up to 8 (M4)	2500
13281	Stainless Steel	4.5	13.2	Up to 8 (M4)	2500
13282	Silver	4.5	13.2	Up to 8 (M4)	2500
13283	Gold	4.5	13.2	Up to 8 (M4)	2500
13400	White	4.8	16.2	Up to 12 (M5)	2500
13406	Off White	4.8	16.2	Up to 12 (M5)	2500
13410	Stone	4.8	16.2	Up to 12 (M5)	2500
13429	Teak	4.8	16.2	Up to 12 (M5)	2500
13466	Orange	4.8	16.2	Up to 12 (M5)	2500
13470	Morning Grey	4.8	16.2	Up to 12 (M5)	2500
13471	Pantone Grey	4.8	16.2	Up to 12 (M5)	2500
13472	Silver Grey	4.8	16.2	Up to 12 (M5)	2500
13473	Flint	4.8	16.2	Up to 12 (M5)	2500
13474	Osprey	4.8	16.2	Up to 12 (M5)	2500
13480	Black	4.8	16.2	Up to 12 (M5)	2500
13481	Stainless Steel	4.8	16.2	Up to 12 (M5)	2500
13482	Silver	4.8	16.2	Up to 12 (M5)	2500
13483	Gold	4.8	16.2	Up to 12 (M5)	2500



35799

- Part 35799 is suitable for all Unicaps starting 134
- Part 36400 is suitable for all Unicaps starting 132

Other Unicap Components

Part Number	O.D. of Washer (mm)	I.D. of Hole (mm)	Colour	To Fit Screw Gauge
35799	14.7	6.5	White	Up to M6
36403*	16.0	4.0	Natural	Up to 8g (M4)
36400*	11.3	3.5	Natural	Up to 8g (M4)

*Low-density polyethylene.

- For correct washer size required - match screw gauge

Washers

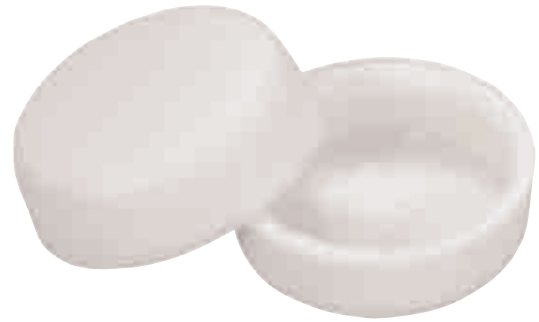
Part Number	Height	To Fit Screw Gauge	Standard Pack Quantity
35599	4.7	5 (M3.5)	2500
13299	4.5	Up to 8 (M4)	2500
13499	4.8	Up to 12 (M5)	2500
14399	8.4	Up to M6	2500
13099	4.2	Up to 3 (M3)	2500

Cover Caps

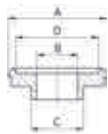
SR 1811

Nylon or LDPE*

- Available in various styles and colours
- For decorative and protective purpose
- Optional Washer - order separately
- For correct washer size required - match 'A' dimensions
- Other RAL colours available



Washers



Type 1

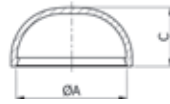


Type 2

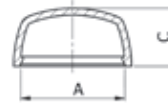


Type 3

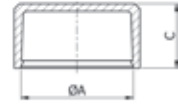
Caps



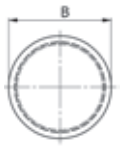
Type 1



Type 2



Type 3



Type 1-4

Caps

Part Number				Type	Dimensions (mm)			Standard Pack Quantity
Black	Grey	Brown	White		A	B	C	
006103222003*	006103200203*	006103207603*	006103211303*	1	8.5	10.5	4.3	500
006104259901	006104200201	006104207601	006104250001	1	10.8	12.2	5.9	500
006105259901	006105200201	006105207601	006105250001	1	12.8	14.5	6.5	500
006106259901	006106200201	006106207601	006106250001	1	14.8	16.5	7.5	500
006108259901	006108200201	006108207601	006108250001	1	18.8	20.6	10.2	500
006204259901	006204200201	006204207601	006204250001	2	10.8	12.2	6	500
006205259901	006205200201	006205207601	006205250001	2	12.8	14.2	8	500
006206259901	006206200201	006206207601	006206250001	2	14.8	16.6	9	500
006208259901	006208200201	006208207601	006208250001	2	18.8	21.3	12	250
006210259901	006210200201	006210207601	006210250001	2	24	26.3	15.5	250
006404259901	006404200201	-	006404250001	3	10.8	12.2	6.2	250
006405259901	006405200201	006405207601	006405250001	3	12.8	14.2	7.0	250
006406259901	006406200201	006406207601	006406250001	3	14.8	16.5	8.5	250
006408259901	006408200201	006408207601	006408250001	3	18.8	20.6	10.8	250
006410259901	006410200201	-	006410250001	3	24	26.1	12.8	250

Washers - Natural Nylon

Part Number	Type	Dimensions (mm)				Standard Pack Quantity
		A	B	C	D	
006004100001	1	10.8	4.2	5.9	8.8	500
006005100001	1	12.8	5.2	6.9	10.8	500
006006100001	1	14.8	6.2	7.9	12.5	500
006008100001	1	18.8	8.3	9.8	16.5	250
006010100001	1	24	10.4	11.8	21	250
006103100001	2	8.5	6	3.2	-	500
006104100001	2	10.8	8.6	4.2	-	500
006105100001	2	12.8	10.8	5.2	-	500
006106100001	2	14.8	12.8	6.4	-	500
006108100001	2	18.8	16.8	8.4	-	500
006210100001	2	24	21	10.5	-	250
006304100001	3	10.8	3.2	-	-	250
006305100001	3	12.8	4.3	-	-	250
006306100001	3	14.8	5.3	-	-	250
006308100001	3	18.8	6.4	-	-	250

SCREW AND NUT COVER CAPS

Adhesive Cover Caps

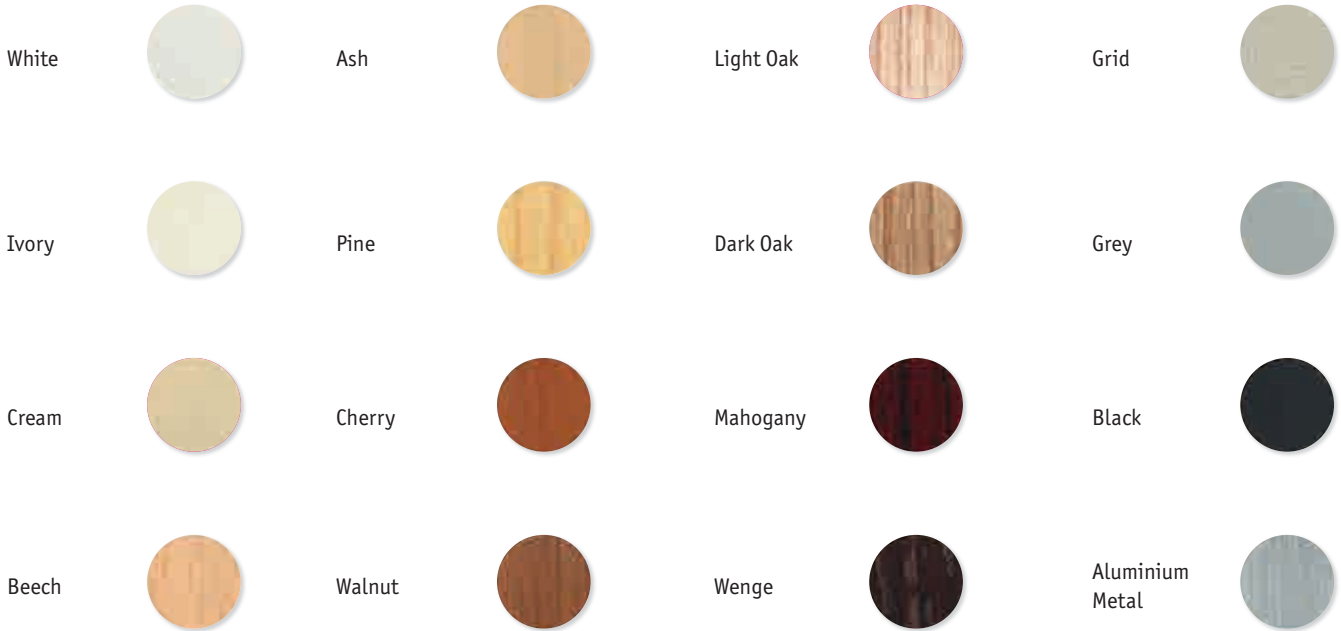
SR 1600

ABS

- Caps to cover screw holes
- Adhesive backing
- Available in 16 different furniture finish colours



Standard Colours



Part Number	Colour	Diameter (mm)	Pieces per sheet
499369	White	13	20
499370	Grid	13	20
499371	Light Oak	13	20
499379	Ivory	13	20
499380	Cream	13	20
499381	Black	13	20
499382	Grey	13	20
499383	Cherry	13	20
499384	Beech	13	20
499385	Ash	13	20
499386	Mahogany	13	20
499387	Walnut	13	20
499388	Pine	13	20
499389	Dark Oak	13	20
499390	Wenge	13	20
499391	Aluminium Metal	13	20

Part Number	Colour	Diameter (mm)	Pieces per sheet
499372	White	20	15
499373	Grid	20	15
499374	Light Oak	20	15
499392	Ivory	20	15
499393	Cream	20	15
499394	Black	20	15
499395	Grey	20	15
499396	Cherry	20	15
499397	Beech	20	15
499398	Ash	20	15
499399	Mahogany	20	15
499400	Walnut	20	15
499401	Pine	20	15
499402	Dark Oak	20	15
499403	Wenge	20	15
499404	Aluminium Metal	20	15

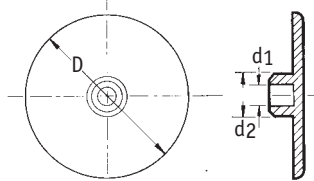
Printing limitations may prevent exact colour representation.

Allen Screw Caps

SR 1805

Black LDPE

- Conceal and protect exposed Allen Screws



Part Number	Allen Screw	Dimensions (mm)			Standard Pack Quantity
		D	d1	d2	
2350/BK	M5	17	2.8	4.3	5000
12865*	M6	17	3.0	5.2	5000
10317	M8	18	4.0	6.2	5000
12661	M10	18	6.0	8.4	5000

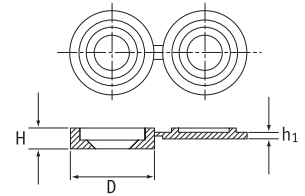
*Domed head.

Uniscrew Caps

SR 1807

Polypropylene

- Accept a range of screw sizes, reducing stock requirements
- Integral washer reduces fitting time
- Provide a neat and tidy finish



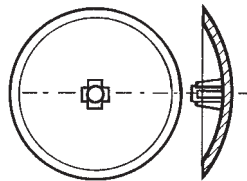
Part Number	Colour	Dimensions (mm)			To Fit Screw Sizes		Standard Pack Quantity
		D	H	h1	Imperial (Countersunk)	Metric (mm) (EuroScrew)	
2347/WH	White	13.6	3.4	1.0	No. 6-12	3.5-6.0	5000
2347/BK	Black	13.6	3.4	1.0	No. 6-12	3.5-6.0	5000
1284612	White	17.5	5.0	1.0	No. 10-12	5.0-6.0	5000
1284613	Black	17.5	5.0	1.5	No. 10-12	5.0-6.0	5000

Cross-Head Screw Caps

SR 1806

LDPE

- Conceal and protect cross-head screws



Twin Fastener or Masonry Screw	Part Number					Standard Pack Quantity
	White	Light Brown	Dark Brown	Teak	Black	
No. 2	2344/WH	2344/LB	2344/DB	2344/TK	2344/BK	10000
No. 3	12447	-	-	-	-	20000
No. 4	16714	-	-	-	-	10000

Screw Cap Covers

SR 1612

LDPE

- Protect and cover screws on veneered chipboard



Part Number				Size (mm)	Standard Pack Quantity
White	Light Brown	Dark Brown	Teak		
1853/WH	1853/LB	1853/DB	1853/TK	5.0	10000
51777	-	-	-	6.0	20000
61854	-	-	-	7.0	20000
50180	-	-	51467	9.5	20000
2343/WH	-	2343/DB	2343/TK	10.0	10000
10908	-	-	-	12.5	20000

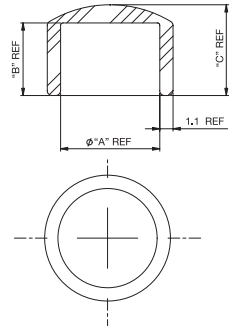
SCREW AND NUT COVER CAPS

Screw Cap

SR 1628

Silicone Rubber, Shore A 55 ± 5

Temperature: Min. -40°C Max. +150°C



Part Number	Recommended Button Head Screw Size	Dimensions (mm)			Standard Pack Quantity
		"A"	"B"	"C"	
1339687	#8. M4	6.7	5	6.5	1000
SC1-M5	¼. M5	8.2	6	7.5	1000
1339685	⅜. M6	9.7	7	8.5	1000

Nut Protection Caps

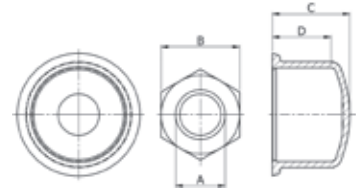
SR 1812

LDPE

- Excellent nuts and bolts protection for outdoor applications
- Resistant to most chemicals



Type 1

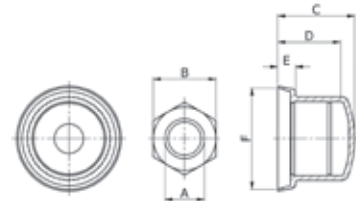


Type 1

Part Number			A	Dimensions (mm)			Standard Pack Quantity
Black	White	Grey		B	C	D	
034061022003	034061011303	034061001303	M6	10	10	7	500
034061522003	034061511303	-	M6	10	15	12	500
034081222003	034081211303	034081201303	M8	13	12	9	250
034082022003	034082011303	034082001303	M8	13	19	16	250
034101622003	034101611303	034101601303	M10	17	15	11	250
034102422003	034102411303	034102401303	M10	17	23	19	100
034121722003	034121711303	034121701303	M12	19	17	13	100
034122722003	034122711303	034122701303	M12	19	27	23	100
034142222003	034142211303	034142201303	M14	22	22	18	100
034162222003	034162211303	034162201303	M16	24	22	18	100
034163522003	034163511303	034163501303	M16	24	35	31	50
034202822003	034202811303	034202801303	M20	30	28	24	50
034204422003	034204411303	034204401303	M20	30	44	40	50
034224922003	034224911303	-	M22	32	49	44	50



Type 2



Type 2

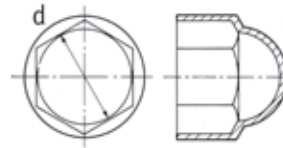
Part Number			A	Dimensions (mm)					Standard Pack Quantity
Black	White	Grey		B	C	D	E	F	
035061222003	035061211303	035061201303	M6	10	12	9	2.0	13.2	500
035061722003	035061711303	035061701303	M6	10	17	13	2.0	13.2	500
035081622003	035081611303	035081601303	M8	13	15	12	2.3	17.9	100
035082322003	035082311303	035082301303	M8	13	22	19	2.3	17.9	100
035101922003	035101911303	035101901303	M10	17	18	14	2.7	22.0	100
035102722003	035102711303	035102701303	M10	17	26	22	2.7	22.0	100
035122122003	035122111303	035122101303	M12	19	21	17	3.5	25.5	100
035123122003	035123111303	035123101303	M12	19	31	27	3.5	25.5	100
035162722003	035162711303	035162701303	M16	24	27	23	4.4	31.5	100
035164022003	035164011303	035164001303	M16	24	40	36	4.4	31.5	50
035203322003	035203311303	-	M20	30	32	29	5.0	38.7	50
035204922003	035204911303	035204901303	M20	30	48	45	5.0	38.7	50

Bolt and Nut Protection Caps

SR 1802

LDPE

- Choice of black, white or grey
- Protect against weathering and tampering
- Enhance finished appearance



Metric – To fit DIN 933 standard bolts

Part Number			To Fit Bolt Size	Dimensions (mm)	Standard Pack Quantity
Black	Grey	White			
15211	494801	12924	M5	7.9	5000
12837	494802	12722	M6	9.8	5000
12838	494803	12723	M8	12.8	5000
12839	494804	12724	M10	16.8	2500
12840	494805	12725	M12	18.8	2000
12841	494806	12726	M14	21.8	1200
12842	494807	12727	M16	23.8	1000
12955	494808	12836	M18	26.8	1500
12970	494809	12920	M20	29.8	1200
12046	494810	12921	M22	31.8	800
12893	494811	12892	M24	35.7	500

Metric – To fit ISO 4017 standard bolts

Part Number			To Fit Bolt Size	Dimensions (mm)	Standard Pack Quantity
Black	White	Grey			
110824	110825	110826	M10	15.8	2500
110820	110821	110822	M12	17.8	2000
110822	110823	110824	M14	20.8	1200

Imperial – UNF

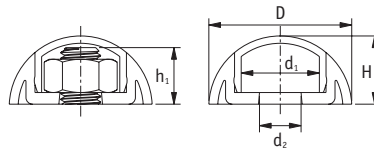
Part Number			To Fit Bolt Size	Dimensions (mm)	Standard Pack Quantity
Black	Grey	White			
10882	494812	10883	¼	10.9	5000
10886	494813	10887	⅜	15.8	2500
12840	494805	12725	½	18.8	2000
12842	494807	12727	⅝	23.8	1000

Secure Cover Caps

SR 2040

Polypropylene

- Ideal for playground equipment and outdoor furniture
- Available in six different colours



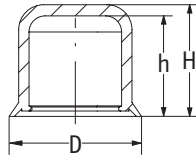
Part Number Base	Part Number Cap	Colour	Nut Size	Dimensions (mm)					Standard Pack Quantity
				D	d ₁	d ₂	H	h ₁	
036001100811	036001200811	Green	M6	25.0	13.5	6.3	12.0	9.5	250
036001108711	036001208711	Blue	M6	25.0	13.5	6.3	12.0	9.5	250
036001111311	036001211311	White	M6	25.0	13.5	6.3	12.0	9.5	250
036001111411	036001211411	Black	M6	25.0	13.5	6.3	12.0	9.5	250
036001112411	036001212411	Red	M6	25.0	13.5	6.3	12.0	9.5	250
036001113211	036001213211	Yellow	M6	25.0	13.5	6.3	12.0	9.5	250
036003100811	036003200811	Green	M8	32.0	17.0	8.3	14.0	11.5	250
036003108711	036003208711	Blue	M8	32.0	17.0	8.3	14.0	11.5	250
036003111311	036003211311	White	M8	32.0	17.0	8.3	14.0	11.5	250
036003111411	036003211411	Black	M8	32.0	17.0	8.3	14.0	11.5	250
036003112411	036003212411	Red	M8	32.0	17.0	8.3	14.0	11.5	250
036003113211	036003213211	Yellow	M8	32.0	17.0	8.3	14.0	11.5	250
036005100811	036005200811	Green	M10	38.0	21.4	10.3	17.0	14.0	100
036005108711	036005208711	Blue	M10	38.0	21.4	10.3	17.0	14.0	100
036005111311	036005211311	White	M10	38.0	21.4	10.3	17.0	14.0	100
036005111411	036005211411	Black	M10	38.0	21.4	10.3	17.0	14.0	100
036005112411	036005212411	Red	M10	38.0	21.4	10.3	17.0	14.0	100
036005113211	036005213211	Yellow	M10	38.0	21.4	10.3	17.0	14.0	100
036007100811	036007200811	Green	M12	43.0	23.6	12.4	20.5	16.5	100
036007108711	036007208711	Blue	M12	43.0	23.6	12.4	20.5	16.5	100
036007111311	036007211311	White	M12	43.0	23.6	12.4	20.5	16.5	100
036007111411	036007211411	Black	M12	43.0	23.6	12.4	20.5	16.5	100
036007112411	036007212411	Red	M12	43.0	23.6	12.4	20.5	16.5	100
036007113211	036007213211	Yellow	M12	43.0	23.6	12.4	20.5	16.5	100

Snap-on Bolt and Nut Protection Caps

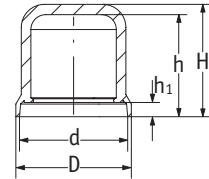
SR 1113

LDPE

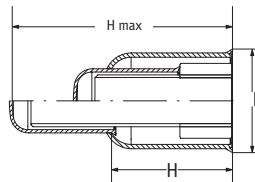
- Type 2 protects washer in addition to bolt and nut
- Types 3 and 4 have extendable head for large studs



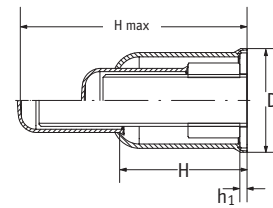
Type 1



Type 2



Type 3



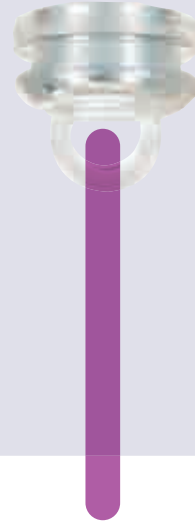
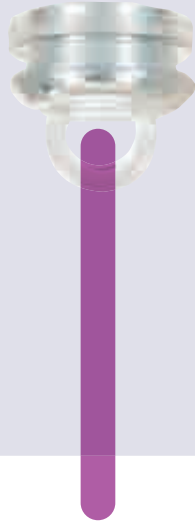
Type 4

Bolt Caps

Part Number	Type	To Fit Size	Dimensions (mm)					Standard Pack Quantity
			D	d	H	h	h ₁	
463627	1	M6	13.9	-	6.1	5.4	-	1000
463628	1	M8	18.8	-	9.3	7.9	-	1000
463629	1	M10	23.8	-	11.3	9.8	-	1000
463630	1	M12	26.5	-	13.7	12.2	-	1000
463631	1	M14	30.0	-	21.0	19.0	-	1000
463632	1	M16	34.5	-	19.0	17.3	-	1000
463634	1	M20	41.0	-	25.7	23.7	-	1250
463636	1	M24	48.5	-	29.8	27.5	-	1000
463637	2	M6	14.5	13.5	8.0	7.0	1.6	1000
463638	2	M8	19.8	17.5	11.7	10.7	1.6	1000
463639	2	M10	24.0	22.8	13.7	12.0	2.0	1000
463640	2	M12	26.5	24.0	16.6	15.0	2.5	1000
463642	2	M16	32.9	30.5	18.7	16.7	3.0	1000
463644	2	M20	41.0	39.3	27.5	24.7	3.0	1250
463645	2	M22	44.1	42.5	31.7	29.6	3.0	1000
463646	2	M24	48.5	46.5	34.3	31.5	4.0	1000

Nut Caps

Part Number	Type	To Fit Size	Dimensions (mm)					Standard Pack Quantity	
			D	d	H	H max	h		h ₁
463647	1	M6	14.5	-	12.0	-	10.6	-	1000
463648	1	M8	18.6	-	14.7	-	13.0	-	1000
463649	1	M10	24.0	-	17.3	-	15.3	-	1000
463650	1	M12	26.5	-	18.8	-	17.5	-	1000
463652	1	M16	32.5	-	32.4	-	31.0	-	1250
463654	1	M20	40.7	-	35.8	-	33.7	-	1250
463656	1	M24	48.3	-	39.5	-	37.6	-	1250
463657	2	M6	14.6	13.7	14.3	-	13.0	1.6	1000
463658	2	M8	19.0	17.5	15.5	-	14.0	1.7	1000
463659	2	M10	24.0	22.0	18.5	-	17.0	2.0	1000
463660	2	M12	26.5	24.5	21.5	-	20.2	2.5	1000
463662	2	M16	33.1	31.4	35.5	-	33.7	3.0	1250
463664	2	M20	41.5	39.2	39.2	-	36.7	3.0	1250
463665	2	M22	43.6	41.1	41.4	-	39.2	3.0	1250
463666	2	M24	48.6	47.0	43.5	-	41.0	4.0	1000
463667	3	M10	23.8	-	18.0	35.0	-	-	500
463668	3	M12	26.5	-	15.0	49.0	-	-	500
463670	3	M16	32.3	-	24.0	62.0	-	-	500
463672	3	M20	40.7	-	32.0	92.0	-	-	500
463674	3	M24	48.6	-	69.0	98.0	-	-	500
463676	4	M12	26.5	24.5	23.0	50.0	-	2.5	500
463680	4	M20	41.5	39.2	35.0	95.0	-	3.0	500
463682	4	M24	48.8	46.5	73.0	102.0	-	4.0	500



FAST AND EASY: **SAY IT, DISPLAY IT.**

It's easy to get your messages across. Our magnetic ceiling hooks let you quickly hang signs and other promotional materials from ceiling rails and remove them without leaving residue or causing damage.

Our self-adhesive ceiling clips offer another versatile mounting solution for all applications. Any way you look at it, we have an economical and easy way of hanging your signs.

YOU CAN ALSO **SHOP ONLINE**



Paper's not the only way to browse our extensive range of products. You can also shop online, where we also have online-only ranges available.

www.essentracomponents.co.uk

Tubular Protective Netting

SR 1027

LDPE

- Protects irregular shapes
- Ideal for external protection of gas cylinders
- Protects against damage during storage or transportation
- Supplied in handy dispensing cartons



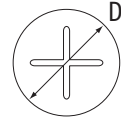
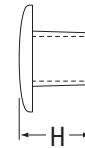
Part Number	Diameter Range (mm)	Colour	Standard Pack Quantity
466800	6-17	Orange	250m
466801	10-25	Black	250m
466802	25-60	Violet	50m
461073	15-35	Natural	2 Rolls x250m
461074	25-80	Natural	2 Rolls x250m
466803	50-100	Red	50m
466804	100-200	Yellow	50m
466805	200-400	Blue	50m
466806	200-400	Purple	50m

Garden Cane Caps

SR 1203

PVC

- Protect against injury from cane top
- Fit canes from 6mm to 12mm in diameter



Part Number	Colour	Dimensions (mm)		Standard Pack Quantity
		H	D	
110601	Yellow	24.0	33.0	2000
110607	Green	24.0	33.0	2500

QUESTIONS? GIVE US A CALL

Our Customer Service advisors can also help you find the right product for your application.

Call 0845 758 5070
www.essentracomponents.co.uk

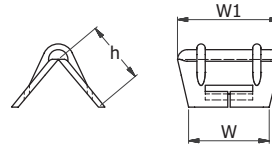


Slotted Edge Protectors

SR 1042

Black Polypropylene or Black LDPE

- Slotted for ease of application
- Polypropylene version for metal strapping



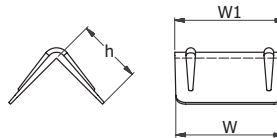
Part Number		Strap Width (mm)	Dimensions (mm)			Raw Material	Standard Pack Quantity
No Slot	Slot		W	W1	h		
110243	110244	18.0	30.0	40.0	25.0	LDPE	2000
110247	110248	18.0	30.0	40.0	25.0	Polypropylene	2000
110245	110246	28.0	40.0	40.0	40.0	LDPE	1000
-	110250	28.0	40.0	40.0	40.0	Polypropylene	1000

Standard Edge Protectors

SR 1042

LDPE

- Popular protection for plastic strapping



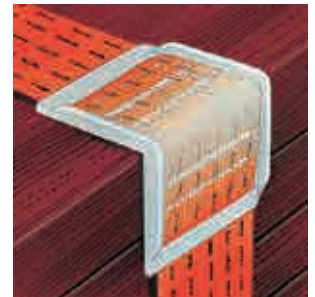
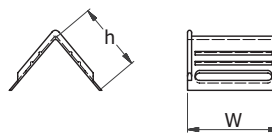
Part Number		Strap Width (mm)	Dimensions (mm)			Colour	Standard Pack Quantity
No Slot	Slot		W	W1	h		
51563	-	19.0	26.3	33.3	26.3	Natural	2000
12660	-	24.0	29.4	29.3	21.9	Natural	2000
10180	-	28.0	44.3	45.2	27.0	Natural	1000
802802	-	28.0	44.3	45.2	27.0	Black	2000
51564	-	28.3	43.6	43.7	28.4	Natural	1000
800234	-	28.3	43.6	43.7	28.4	Black	1000
-	89395	35.8	48.4	64.7	45.8	Natural	600

Heavy-Duty Slotted Edge Protectors

SR 1042

Natural LDPE or Natural Linear LDPE

- Suits wide range of sizes and styles of strapping and webbing



Part Number	Strap Width (mm)	Dimensions (mm)		Raw Material	Standard Pack Quantity
		W	h		
803759	55.0	65.3	46.2	LDPE	1000
12507	55.0	65.3	46.2	LLDPE	500

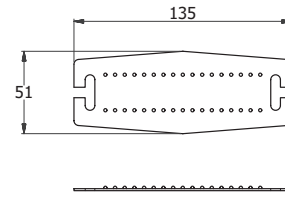
Protection Band

SR 1042

Blue HDPE



- Made for steel strapping
- Flexible to fit curved and irregular-shaped items



Part Number	Strap Width (mm)	Standard Pack Quantity
10203	19.0	1000

Edging Strip

SR 1050

Black PVC



- Safety product
- Protects sharp or delicate edges
- Fits irregular shapes
- Handy 50-metre dispensing reels

Part Number	Type	Stripe Width Max. (mm)	Standard Pack Quantity
32343	0.8-1.2	7.0	50m
34074	1.0-2.0	8.0	50m
34075	1.5-2.8	9.5	50m
34076	2.7-3.8	10.5	50m
34077	3.7-5.2	11.0	50m
34078	5.3-6.8	13.0	50m

TRY BEFORE YOU
BUY – REQUEST
YOUR **FREE**
SAMPLES TODAY

Call **0845 758 5070** or visit
www.essentracomponents.co.uk

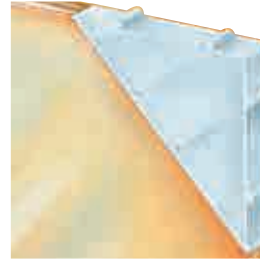
Corner Protectors

SR 1041

Low-Density Polyethylene/Polypropylene Type 5 only

- Effective protection for goods in transit and storage

Part Number	Type	Dimensions (mm)		Colour	Standard Pack Quantity
		Panel Thickness	Edge Protection Length		
12321	1	0.8-1.2	32	White	5000
10277	1	2.0-3.0	45.0	Black	2500
51800	2	22	22 x 45 x 45	White	2000
112736	3	4	45	Black	1000
110833	3	4	45	Black	1000
112737	3	6	45	Black	1000
110834	3	6	45	Natural	1000
112738	3	8	45	Natural	1000
112739	3	10	45	Natural	1000
112740	3	12	45	Black	1000
112741	3	15	55	Natural	500
112742	3	18	55	Black	500
112743	3	20	55	Natural	500
112744	3	22	55	Black	500
112745	3	24	55	Black	400
112746	3	25	55	Black	400
112747	3	28	55	Black	400
112748	3	30	55	Black	250
112749	3	32	55	Black	250
112750	3	38	55	Black	250
112751	3	40	55	Black	250
112752	3	47	55	Black	250
110796	4	20	45	Black	250
39861	4	30	45	Black	250
36240	6	34	45	Black	350
36241	4	40	45	Black	500
112753	5	15-35	55	Black	500
463490	4	40	45	Black	500
112754	5	35-60	70	White	250



Type 1 - Standard Protector



Type 2 - 3 Way Corner



Type 3 - Standard Protector



Type 4 - Heavy Duty



Type 5 - Expandable



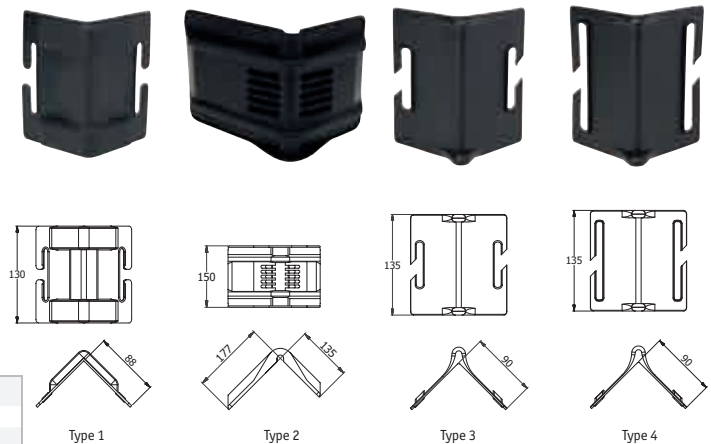
Type 6 - Open

Heavy Duty Edge Protector

SR 1177

Polypropylene

- Heavy duty edge protector for large load
- Secured with straps (not included)



Part Number	Type	Stripe Width Max.(mm)	Standard Pack Quantity
498744	1	50	4
498745	2	50	4
498746	3	50	4
498747	4	70	4