

## RESTORE ORDER WITH CABLE MANAGEMENT SOLUTIONS

- Guide and protect with our cable management solutions to maintain uptime and reduce costly repairs
- IP protection ratings to protect from dust ingress, moisture and temperature variation
- High quality products to ensure cost-effective and resilient wire management



**FREE  
SAMPLES**



297



299



307



309



318



319

NEW



321



327

NEW



332



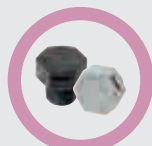
334



337



340



342



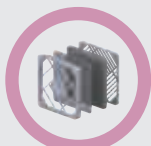
346

NEW



353

NEW



354



356

MORE THAN  
**1,600**  
CABLE  
MANAGEMENT  
PRODUCTS  
AVAILABLE

# CABLE MANAGEMENT



CONDUIT AND ACCESSORIES

296



GROMMETS, STRAIN RELIEF  
AND BLANKING PLUGS

306



CABLE GLANDS AND ACCESSORIES

331



CABLE ENTRY SYSTEMS

343



CABLE TERMINALS

346



FAN ACCESSORIES

354

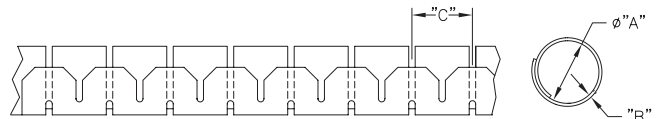
# CONDUIT AND ACCESSORIES

## Rapid Cable Wrap

SR 1723

Nylon or Polypropylene

- Crush resistant
- Tough durable protection for cable looms
- Protects against damage and wear without restricting flexibility
- Easy to install with special tool



Part Number	Dimensions (mm)				Material	Colour	Installation Tool Part Number	Standard Pack Quantity
	"A"	Max.Bundle Ø	"B"	"C"				
SHR-05-6NB	5	6	0.8	10.0	Nylon, RMS-85	Black	CAT-05-PP	100m
SHR-08-6NB	8	10	0.8	10.0	Nylon, RMS-85	Black	CAT-08-PP	100m
SHR-15-6NB	15	16	0.8	14.0	Nylon, RMS-85	Black	CAT-15-PP	50m
SHR-20-6NB	20	23	0.9	17.0	Nylon, RMS-85	Black	CAT-20-PP	30m
SHR-25-6NB	25	25	1.0	20.0	Nylon, RMS-85	Black	CAT-25-PP	20m
SHR-32-6NB	32	32	1.3	24.9	Nylon, RMS-85	Black	CAT-32-PP	15m
SHR-05-6VOB	5	6	0.8	10.0	UL94-V0 Nylon, RMS-95	Black	CAT-05-PP	100m
SHR-08-6VOB	8	10	0.8	10.0	UL94-V0 Nylon, RMS-95	Black	CAT-08-PP	100m
SHR-15-6VOB	15	16	0.8	14.0	UL94-V0 Nylon, RMS-95	Black	CAT-15-PP	50m
SHR-20-6VOB	20	23	0.9	17.0	UL94-V0 Nylon, RMS-95	Black	CAT-20-PP	30m
SHR-25-6VOB	25	25	1.0	20.0	UL94-V0 Nylon, RMS-95	Black	CAT-25-PP	20m
SHR-32-6VOB	32	32	1.3	24.9	UL94-V0 Nylon, RMS-95	Black	CAT-32-PP	15m
SHR-05-PPB	5	6	0.8	10.0	Polypropylene, RMS-94	Black	CAT-05-PP	100m
SHR-08-PPB	8	10	0.8	10.0	Polypropylene, RMS-94	Black	CAT-08-PP	100m
SHR-15-PPB	15	16	0.8	14.0	Polypropylene, RMS-94	Black	CAT-15-PP	50m
SHR-20-PPB	20	23	0.9	17.0	Polypropylene, RMS-94	Black	CAT-20-PP	30m
SHR-25-PPB	25	25	1.0	20.0	Polypropylene, RMS-94	Black	CAT-25-PP	20m
SHR-32-PPB	32	32	1.3	24.9	Polypropylene, RMS-94	Black	CAT-32-PP	15m
SHR-08-PPW	8	10	0.8	10.0	Polypropylene, RMS-94	White	CAT-08-PP	100m
SHR-15-PPW	15	16	0.8	14.0	Polypropylene, RMS-94	White	CAT-15-PP	50m
SHR-20-PPW	20	23	0.9	17.0	Polypropylene, RMS-94	White	CAT-20-PP	30m
SHR-25-PPW	25	25	1.0	20.0	Polypropylene, RMS-94	White	CAT-25-PP	20m
SHR-32-PPW	32	32	1.3	24.9	Polypropylene, RMS-94	White	CAT-32-PP	15m
SHR-15-PPS9022	15	16	0.8	14.0	Polypropylene, RMS-94	Silver	CAT-15-PP	50m
SHR-20-PPS9022	20	23	0.9	17.0	Polypropylene, RMS-94	Silver	CAT-20-PP	30m
SHR-25-PPS-9022	25	25	1.0	20.0	Polypropylene, RMS-94	Silver	CAT-25-PP	20m
SHR-32-PPS-9022	32	32	1.3	24.9	Polypropylene, RMS-94	Silver	CAT-32-PP	15m

## Installation Tool

Part Number	"A" (mm)	"B" Max Bundle Ø (mm)	To be used with	Colour	Material	Standard Pack Quantity
CAT-05-PP-BL	53	6.0	SHR-05-YYY*	Blue	Polypropylene, RMS-150	1
CAT-08-PP	71	9.5	SHR-08-YYY*	Orange/White	Polypropylene, RMS-268 & Polyacetal, RMS-267	1
CAT-15-PP	81	16.0	SHR-15-YYY*	Orange/White	Polypropylene, RMS-268 & Polyacetal, RMS-267	1
CAT-20-PP	100	20.0	SHR-20-YYY*	Orange/White	Polypropylene, RMS-268 & Polyacetal, RMS-267	1
CAT-25-PP	113	24.5	SHR-25-YYY*	Orange/White	Polypropylene, RMS-268 & Polyacetal, RMS-267	1
CAT-32-PP	144	31.0	SHR-32-YYY*	Orange/White	Polypropylene, RMS-268 & Polyacetal, RMS-267	1

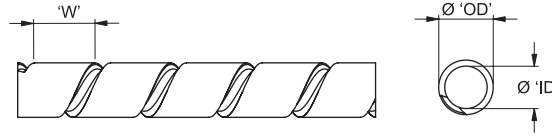
Tool available in bulk packages of 100/box. To order add -BU to the end of the part number. \*YYY = SHR Material

## Harness Wrap

SR 1725

HW

Natural/Black PE, RMS-409



Product Number		Dimensions (mm)					Standard Pack Quantity (m)
Natural	Black	Ø 'OD'	Ø 'ID'	Wall Thickness	Bundle Capacity	'W'	
HW-3.5-5-PE	HW-3.5-5-PE-BK	3.5	2.3	0.6	2 - 15	5	50m
HW-5-7-PE	HW-5-7-PE-BK	5.0	3.7	0.65	4 - 20	7	25m
HW-8-10-PE	HW-8-10-PE-BK	8.0	6.5	0.75	7 - 40	10	25m
HW-10-12-PE	HW-10-12-PE-BK	10.0	8.2	0.9	12 - 50	12	25m
HW-12-14-PE	HW-12-14-PE-BK	12.0	10.0	1.0	13 - 70	14	25m
HW-14-16-PE	HW-14-16-PE-BK	14.0	12.0	1.0	15 - 80	16	20m
HW-20-22-PE	HW-20-22-PE-BK	20.0	17.6	1.2	20 - 120	22	25m
HW-25-27-PE	HW-25-27-PE-BK	25.0	22.2	1.4	25 - 150	27	20m

All dimensions apply to extruded tubing before cutting.

## Spiral Wrap

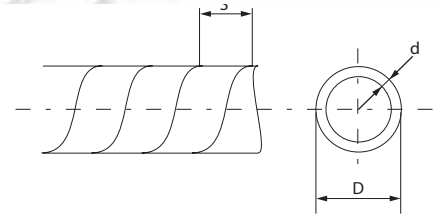
SR 1794

Black PE

- Lightweight protective wrap
- Provides cost-effective hose and cable protection



Part Number	Dimensions (mm)			Cable Bundle Diameter (mm)	Standard Pack Quantity
	D	d	S		
SBX-03-E	3.0	0.75	5.0	2-5	10m
SBX-06-E	6.0	1.0	7.0	5-8	10m
SBX-08-E	8.0	1.0	11.0	7-10	10m
SBX-10-E	10.0	1.0	12.0	9-12	10m
SBX-12-E	12.0	1.5	14.0	11-14	10m
SBX-15-E	15.0	1.5	15.0	13-17	10m
SBX-19-E	19.0	2.0	18.0	16-22	10m
SBX-24-E	24.0	2.0	20.0	20-30	10m

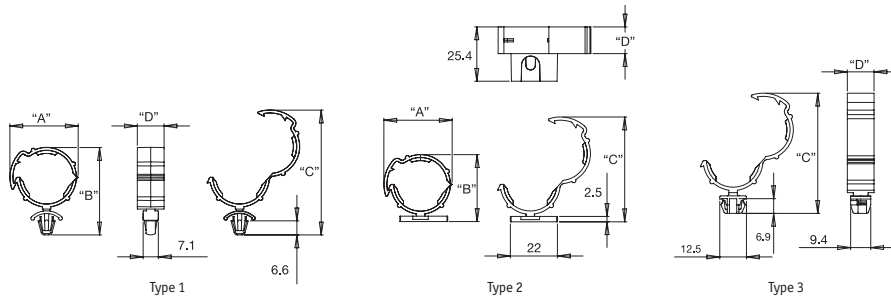


## SHR Clips

SR 1748

SHR-C

Black UL94-V2 Nylon 6/6, RMS-01



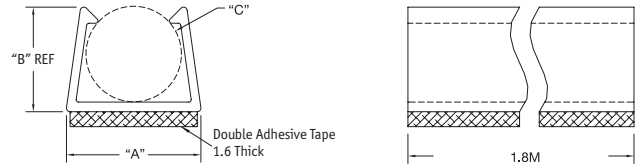
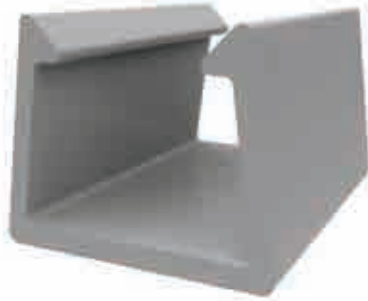
Part Number	Type	Dimensions (mm)				Accepts SHR Size	Mounting Method	Standard Pack Quantity
		"A"	"B"	"C"	"D"			
SHR-C1	1	29	42.5	58	12.5	To hold Richco Harness Wrap SHR-20 and SHR-25 sizes	Snap Lock into a 6.4 Hole in a 0.8-2 Panel	500
SHR-C2	2	30	32.5	47	12.5		#8 or M4 Screw	500
SHR-C3	2	30	32.5	47	12.5		0.8 Thick Double Sided Adhesive Tape, RMS-375	500
SHR-C4	3	30	40.5	56	12.5		Snap Lock into a 9.5 Square Hole in a 0.8-2 Panel	500

## Single Cable Duct on Adhesive Base

SR 1726

SCD

Beige, RMS-32, Adhesive, RMS-15



Part Number	Dimensions (mm)			Cable Recommendations		Standard Pack Quantity
	"A"	"B" Ref	"C" Holding Ø	Coax	Computer	
SCD-1521	7.6	6.4	4 - 5.5	RG58	-	1.83m in ten 1.8m long pieces
SCD-2228	9.1	6.6	4 - 7.1	RG59.62.6	9 Line	1.83m in ten 1.8m long pieces

# QUESTIONS? GIVE US A CALL

Our Customer Service advisors can also help you find the right product for your application.

**Call 0845 758 5070**  
[www.essentracomponents.co.uk](http://www.essentracomponents.co.uk)

## Richflex Flexible Channel

SR 1732

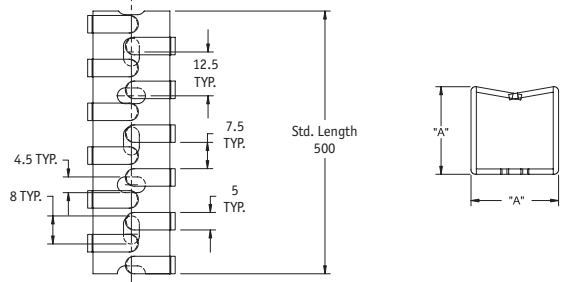
RX

Grey, Polypropylene, RMS-177 Adhesive Back, RMS-93

- 1 piece = 0.5m



Part Number	"A" (mm)	Internal Section mm <sup>2</sup>	Mounting Method	Standard Pack Quantity (pieces)
RX1313-0	12.5	110	Screw	112
RX1313-4	12.5	110	Adhesive	112
RX1616-0	16	185	Screw	84
RX1616-4	16	185	Adhesive	84
RX2020-0	20	320	Screw	112
RX2020-4	20	320	Adhesive	112
RX2525-0	25	500	Screw	70
RX2525-4	25	500	Adhesive	70
RX3030-0	30	720	Screw	50
RX3030-4	30	720	Adhesive	50
RX4040-0	40	1320	Screw	50
RX4040-4	40	1320	Adhesive	50
RX5050-0	50	2040	Screw	32
RX5050-4	50	2040	Adhesive	32



## Slotted Wire Duct

SR 1733

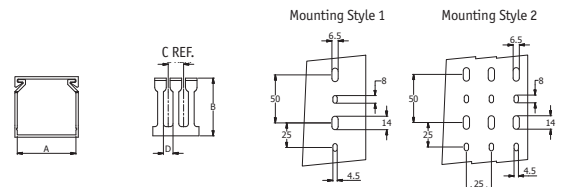
SRWD

Grey PVC

- Lid supplied with base
- Fingers are scored for easy break off
- Used for general purpose control panel wiring and to route and protect wiring in communication cupboards
- Holds breakout wires whilst providing flexibility for adding or removing wires
- 1 piece = 2 metres



Part Number	Dimensions (mm)				Mounting Style	Standard Pack Quantity
	A	B	C	D		
SRWD-1015	25.4	38.1	20.0	8.0	1	12x2m
SRWD-1515	38.1	38.1	20.0	8.0	1	12x2m
SRWD-1520	38.1	50.8	20.0	8.0	1	8x2m
SRWDN1-1530	38.1	76.2	10.0	4.0	1	12x2m
SRWD-2020	50.8	50.8	20.0	8.0	1	8x2m
SRWDN1-2030	50.8	76.2	10.0	4.0	1	12x2m
SRWD-4020	101.6	50.8	20.0	8.0	2	4x2m



# CONDUIT AND ACCESSORIES

## Flexible Cable Conduit

Our products have been developed and tested to the most demanding quality standards and have been awarded quality approvals and compliance worldwide.



### We can offer you:

- Metallic and non-metallic conduit systems and accessories
- Contractor packs offering you the convenience of conduit, fittings and lock nuts in one simple pack
- Quality products that meet your every day needs
- User friendly products offering time saving innovations
- Expert advice and guidance on suitability of products for different applications
- Same day dispatch on all parts


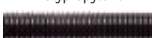


## Quick reference guide

### Metallic Conduits

CONDUIT SYSTEM	IP Rating available	Compression Strength kg/100mm	Pull of Strength (kg)	Colour	High fatigue life	Temp. Range	Flexible	Low fire hazard	Halogen free	Self-extinguishing	High abrasion resistance	High UV resistance
		20mm nominal size										
SR1756 Galvanised Steel 	IP40	350	120	Zinc	-	-100°C to 300°C	✓	✓	✓	✓	✓	-
SR1757 PVC Coated Galvanised Steel 	IP54	350	120	Black	-	-15°C to 70°C	✓	-	-	-	-	-

### Non-Metallic Conduits

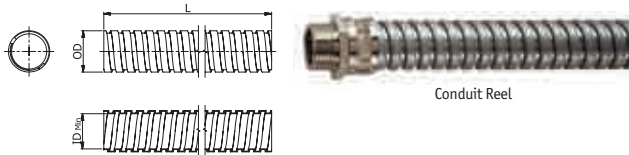
CONDUIT SYSTEM	IP Rating available	Compression Strength kg/100mm	Pull of Strength (kg)	Colour	High fatigue life	Temp. Range	Flexible	Low fire hazard	Halogen free	Self-extinguishing	High abrasion resistance	High UV resistance
		20mm nominal size										
SR1758 Nylon 	IP66, IP67	75	40	Black	✓	-40°C to 120°C	✓	✓	✓	✓	✓	✓
SR1759 Polypropylene 	IP40, IP66	350	25	Black	-	-20°C to 90°C	✓	-	-	✓	-	-

## Galvanised Steel Conduit

SR 1756

### Galvanised Steel

- Typical applications: underfloor wiring in office blocks
- High mechanical strength
- Highly flexible
- Temperature range: -100°C to +300°C
- IP40 rating with standard fittings
- Low fire hazard product
- Self extinguishing
- High abrasion resistant



### Fixed External Thread Nickel Plated Brass

Two part fitting comprising shell and body with external thread. This fitting can be inserted into a knockout and secured with a locknut.



### Swivel External Thread Nickel Plated Brass

Two part fitting comprising shell and body. The external thread swivels about the main body. Can be used with threaded entries, or knockout secured with a locknut.



Part Number		Nominal Size (mm)	Outside Diameter (mm)	Inside Diameter (mm)	Min. Inside Bed Radius	Standard Pack Quantity
10m	25m					
494589	494590	20.0	20.5	16.9	45	1
494593	-	25.0	25.0	21.1	55	1
494597	-	32.0	32.0	28.1	60	1

### Fixed Fittings

External thread nickel plated brass

Part Number	Metric Thread Size	Standard Pack Quantity
494591	M20	10
494595	M25	10
494598	M32	2

### Swivel Fittings

External thread nickel plated brass

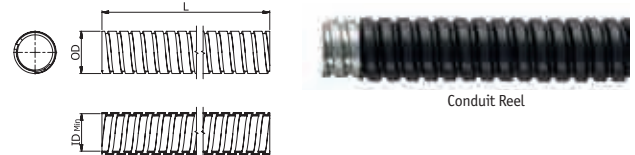
Part Number	Metric Thread Size	Standard Pack Quantity
494592	M20	10
494596	M25	10
494599	M32	2

## PVC Coated Galvanised Steel Conduit

SR 1757

### PVC Coated Galvanised Steel

- Typical applications include general factory wiring and connections to machines
- High mechanical strength
- Highly flexible
- IP54 rating with standard fittings
- Temperature range: -15°C to 70°C
- Nickel plated brass fittings



### Fixed External Thread Nickel Plated Brass

Two part fitting comprising shell and body with external thread. This fitting can be inserted into a knockout and secured with a locknut.



### Swivel External Thread Nickel Plated Brass

Two part fitting comprising shell and body. The external thread swivels about the main body. Can be used with threaded entries, or knockout secured with a locknut.



Part Number		Nominal Size (mm)	Outside Diameter (mm)	Inside Diameter (mm)	Min. Inside Bed Radius	Standard Pack Quantity
10m	25m					
494600	494601	20.0	20.5	16.9	45	1
494604	-	25.0	25.0	21.1	55	1
494608	-	32.0	32.0	28.1	60	1

### Fixed Fittings

External thread nickel plated brass

Part Number	Metric Thread Size	Standard Pack Quantity
494602	M20	10
-	M25	10
494609	M32	2

### Swivel Fittings

External thread nickel plated brass

Part Number	Metric Thread Size	Standard Pack Quantity
494603	M20	10
494607	M25	10
494610	M32	2



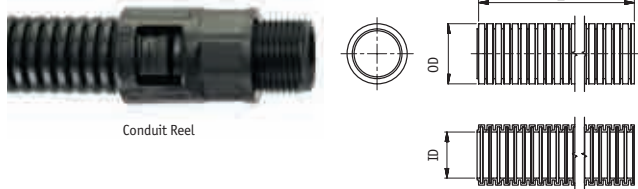
# CONDUIT AND ACCESSORIES

## Nylon Conduit

SR 1758

Black Nylon

- Halogen, sulphur and phosphorus free
- Temperature range: -40°C to 120°C (-20°C to 100°C for moving applications)
- Highly flexible and high fatigue life
- High impact strength and recovers if crushed
- Self-extinguishing
- IP66 when used with standard fittings
- High abrasion resistant
- High UV resistance
- UL94-V2 flame retardancy
- Highly resistant to solvents and oils
- Typical applications include: usage with all types of machinery and in public buildings



### 90° elbow external thread fitting

One piece, slim, fast fit, external threaded 90° elbow fitting suitable for knockouts (Supplied with locknuts)

### Straight external thread fitting

One piece, slim, fast fit, external threaded fitting suitable for knockouts or threaded entries. (Supplied with locknuts)

Part Number		Nominal Size (mm)	Outside Diameter (mm)	Inside Diameter (mm)	Min. Inside Bed Radius	Standard Pack Quantity
25m	50m					
-	494611	20	20.0	14.8	45	1
494614	494615	21	21.2	16.7	45	1
494618	494619	25	25.0	19.1	50	1
494622	494623	28	28.5	22.8	50	1

### Straight external thread

Part Number	Metric Thread Size	Standard Pack Quantity
494612	M20	10
494616	M21	10
494620	M25	10
494624	M28	10

### 90° Elbow external thread

Part Number	Metric Thread Size	Standard Pack Quantity
494613	M20	10
494617	M21	10
494621	M25	10

## Corrugated Tubing

SR 1734

CT

Black, PA 6 Heat Stabilised, RMS-423; LDPE, RMS-421

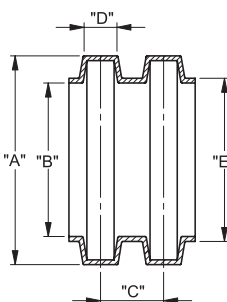
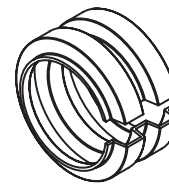
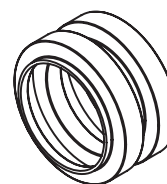


Fig. 1 Solid Version

Fig. 2 Slit Version



Part Number				Dimensions (mm)					Standard Pack Quantity
PA 6 Heat Stabilised. RMS 423		LPDE. RMS-421		Ø "A"	Ø "B"	"C"	"D"	"E"	
Type 1 Solid Version	Type 2 Slit Version	Type 1 Solid Version	Type 2 Slit Version						
CT-4.5-A-PA-BK	CT-S4.5-A-PABK	CT-4.5-A-LDPE-B	CT-S4.5-A-PEBK	7.1	4.8	2.2	1.2	5.1	
CT-8.5-A-PA-BK*	CT-S8.5-A-PABK	CT-8.5-A-LDPE-B	CT-S8.5-A-PEBK	11.7	8.4	2.4	1.5	8.8	
CT-10-A-PA-BK*	CT-S10-A-PA-BK	CT-10-A-LDPEBK	CT-S10-A-PE-BK	13	9.9	2.7	1.8	10.4	
CT-12-A-PA-BK*	CT-S12-A-PA-BK	CT-12-A-LDPEBK	CT-S12-A-PE-BK	15.7	12.2	3.1	2.2	12.8	
CT-17-A-PA-BK	CT-S17-A-PA-BK	CT-17-A-LDPEBK	CT-S17-A-PE-BK	21.2	16.6	3.3	2.3	17.2	
CT-23-A-PA-BK	CT-S23-A-PA-BK	CT-23-A-LDPEBK	CT-S23-A-PE-BK	28.3	23.2	3.4	2.3	24	
CT-29-A-PA-BK*	CT-S29-A-PA-BK	CT-29-A-LDPEBK	CT-S29-A-PE-BK	34.5	29	3.4	2.3	29.8	

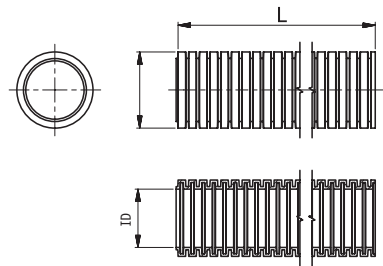
\*UL File No. E350965

## Polypropylene Contractor Packs

SR 1759

### Polypropylene

- Includes 10m of Polypropylene conduit as well as 10 fittings and lock nuts
- All supplied in a handy carry pack for easy ordering, storage and usage
- Typical applications include: buildings, particularly when buried in concrete and plaster
- IP66 when used with standard fittings
- Acid resistant
- Temperature range: -20°C to 90°C
- Self extinguishing



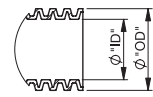
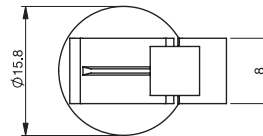
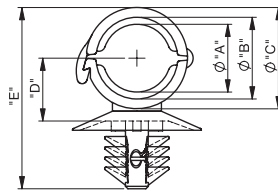
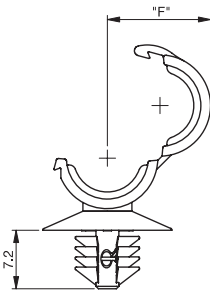
Part Number	Description	I.D.	Standard Pack Quantity
494626	M20 thread	14.8	1
494627	M25 thread	19.1	1

## Hinged Locking Clamps

SR 1736

### HLCC

Heat stabilised UL94-V2 Nylon 6/6, RMS-47, Black



Tube dimensions

Part Number	Recommended Corrugated Tube Size		Panel Hole Ø	Panel Thickness	Dimensions (mm)						Standard Pack Quantity
	ID	OD			"A"	"B"	"C"	"D"	"E"	"F"	
HLCC-1BK	5	7.1	6.5-7.0	0.8-3	5.8	7.2	9.6	6.3	19.7	9.8	1000
HLCC-2BK	6.9	9.9	6.5-7.0	0.8-3	8.3	10	12.4	7.7	22.2	12.6	1000

# QUICK, ACCURATE AND **SAFE**

Our card guides and pullers make PCB access easier, so you can avoid damage to the circuit boards, ensuring its performance.



**LOCKING CIRCUIT  
BOARD GUIDE**

Page 192



**CIRCUIT BOARD  
PULLER**

Page 196



**PCB INSERTER/  
EXTRACTOR**

Page 199



**PCB INSERTER/  
EXTRACTOR  
INSTALLATION PIN**

Page 200

**Call 0845 758 5070**

**[www.essentracomponents.co.uk](http://www.essentracomponents.co.uk)**

## Metal Edge Mounting Clip for Corrugated Tube

SR 6262

Polyamide and Stainless Steel 302

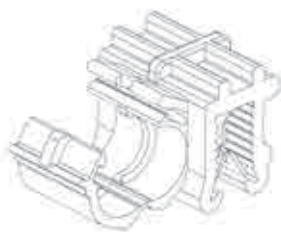
- Push on plastic/metal sheet edge anchors, for use with corrugated tubing
- Simple Tube mounting solution for all sheet material applications
- Top or side mounting options
- Individual or multi-tube mounting on same base



Type 1



Type 2



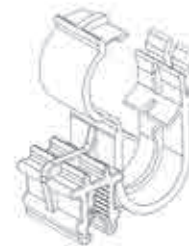
Type 3



Type 4



Type 5



Type 6

Part Number	Dimensions (mm)						Corrugated Tube NW	Standard Pack Quantity
	Panel Thickness (mm)	Width	Length	Height	Height to CT Centre	Type		
550261	0.7-3	15	15	20	15.5	1	NW 4.5	100
550262	0.7-3	15	15	20	15.5	2	NW 4.5	100
550263	0.7-3	20	15	14.5	6.5	3	NW 4.5	100
550264	3-6	20	20	17	7.7	3	NW 4.5	100
550265	3-6	20	20	21	18.5	2	NW 4.5	100
550266	3-6	15	15	23	17.5	2	NW 7.5	100
550267	3-6	12	22	23	18.5	1	NW 10	100
550268	0.7-3	22	15	20	8.7	3	NW 10	100
550269	3-6	22	20	20	8.9	3	NW 10	100
550270	0.7-3	12	34	24.4	19.4	4	2 x NW 10	100
550271	0.7-3	15	41	20	13.6	5	2 x NW 10	100
550272	0.7-3	30	15	30	8.5/18.5	6	2 x NW 10	100
550273	0.7-3	15	15	23.5	10.5	3	NW 13	100
550274	3-6	23	20	32	23.3	2	NW 13	100
550275	3-6	13	23	30	20	1	NW 13	100
550276	0.7-3	30	15	32	22.7	2	NW 17	100

CT-Corrugated tubing

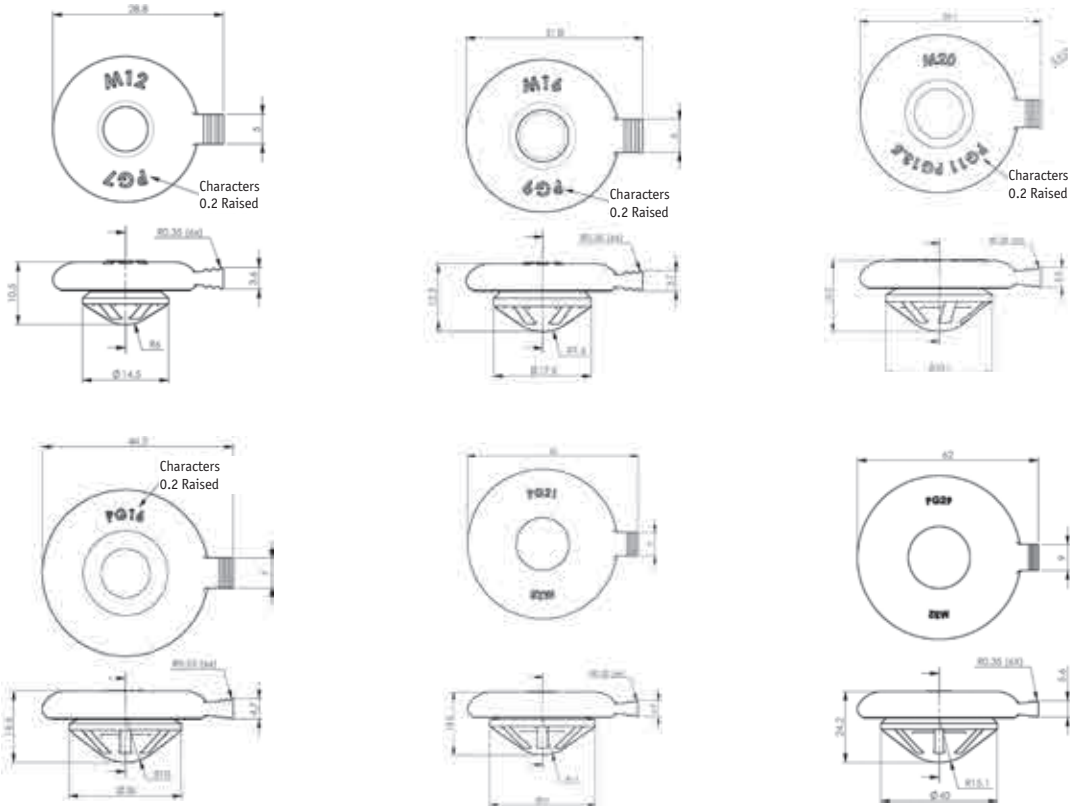
# GROMMETS, STRAIN RELIEF AND BLANKING PLUGS

## Push In Cable Blanking Plug

SR 6275

Silicone Rubber

- Protective cover for cable gland mounting holes
- Can be pushed into place on the end of a tool
- Range of panel depths
- Fits standard Metric and PG sizes
- Pull tab for easy release
- Complies with IP67



Part Number	Dimensions (mm)			Standard Pack Quantity
	Hole Diameter	Panel Thickness Range	Cable Gland Sizes – Metric/PG	
551846	12.2 -12.5	1- 2	M12/PG7	1000
551847	15.4 -16.2	1- 2	M16/PG9	500
551848	18.8 -20.7	1- 2	M20/PG11 + PG13.5	500
551849	22.8	1- 2	PG16	100
551850	25.2 -28.6	1- 2	M25/PG21	100
551851	32.2 -35.4	1- 2	M32	100

## Standard Grommets – Imperial

### SR 1700/1701

#### Black PVC

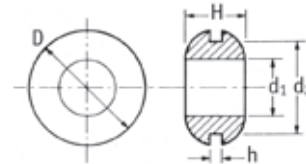
- Protects wires and cables passing through panels

#### Black Thermoplastic Rubber

- Resistant to most oils and greases
- Withstands temperatures from -40°C to 135°C

#### TPE

- Suitable for harsh environments with a wider operating temperature range
- Very stable material offering a long operating life



Part Number		Mounting Hole (d2) mm	Panel Hole Thickness (h) mm	Dimensions (mm)			Standard Pack Quantity
PVC	TPR			d1	D	H	
11177	15057	4.8	0.8	2.8	8.0	4.8	10000
11026	15058	4.8	1.6	3.2	8.0	6.4	10000
15515	-	6.0	1.2	3.2	8.8	4.0	10000
10629*	15060	6.4	0.8	4.0	9.5	4.0	10000
11333	15059	6.4	1.6	4.0	9.5	6.3	10000
10280	15061	6.4	1.6	4.8	9.5	7.0	10000
12603	-	6.4	1.6	4.8	8.8	7.0	10000
11402	15062	6.4	3.0	4.0	9.5	8.0	10000
498069	-	7.0	1.5	4.8	11.1	6.4	10000
10518	-	9.5	1.6	4.8	12.5	6.8	10000
15501	-	7.9	1.2	5.6	11.1	6.4	10000
10117	-	7.9	3.0	3.0	11.0	8.0	10000
-	15064	8.0	0.8	4.8	11.0	4.8	10000
11105	-	8.0	0.8	5.5	11.0	5.5	10000
10597*	-	8.0	1.6	5.5	11.0	5.5	10000
-	15065	8.0	1.6	5.5	11.0	5.5	10000
10489	-	8.0	0.8	4.8	11.0	4.8	10000
11318	15072	9.5	1.2	7.0	13.8	4.0	10000
-	15067	9.5	1.6	4.8	12.5	6.8	10000
10885*	15069	9.5	1.6	6.4	14.2	6.4	10000
11178	-	9.5	1.6	6.4	14.2	7.0	10000
11303	-	9.5	1.6	6.4	14.2	5.0	10000
10428	15073	9.5	1.6	8.0	14.2	4.8	10000
11107	15074	9.5	1.6	8.0	14.2	8.0	10000
15505	-	9.5	1.2	5.6	11.1	4.0	10000
-	15068	9.5	2.4	6.4	14.2	7.0	10000
15523	-	9.6	3.2	4.0	15.9	6.4	10000
11272	15071	10.2	1.2	7.0	13.8	4.5	10000
40045	-	10.3	1.6	7.2	14.3	4.0	10000
40041	-	10.3	1.6	7.9	15.9	7.9	10000
11146	15075	11.0	1.6	8.0	14.2	4.8	10000
11151	15076	11.0	1.6	8.0	14.2	8.0	10000
10744	15078	11.0	1.6	8.0	16.0	6.4	10000
15524	-	11.9	1.6	6.4	15.9	7.9	5000
15506	-	11.9	2.0	9.6	17.5	6.8	5000
10605	15079	12.5	1.6	6.4	16.0	8.0	10000
10646	15080	12.5	1.6	8.0	16.0	6.4	10000
10644	15084	12.5	1.6	9.5	17.0	7.0	10000
11019	-	12.5	1.6	9.5	19.0	6.4	5000
10881	15086	12.5	1.6	11.0	19.0	6.4	5000
10770	15081	12.5	3.0	8.0	16.0	8.0	10000
10911	15083	12.5	3.0	9.5	17.0	8.8	10000
15508	-	13.5	3.2	9.6	19.0	9.6	5000
40042	-	13.5	4.0	9.6	23.0	8.8	5000
10592	-	14.2	1.6	9.5	19.0	6.4	5000
10281	15087	14.2	1.6	11.0	19.0	6.4	5000
15528	-	15.9	0.8	11.1	19.0	9.5	5000
40010**	-	15.9	1.2	12.7	20.6	5.0	10000

Part Number		Mounting Hole (d2) mm	Panel Hole Thickness (h) mm	Dimensions (mm)			Standard Pack Quantity
PVC	TPR			d1	D	H	
10738	15089	16.0	1.2	12.5	20.5	7.0	5000
10628	15090	17.5	1.6	12.5	22.0	6.4	4000
10512	-	17.5	1.6	14.2	22.0	4.8	10000
15500	-	19.0	1.6	12.0	25.4	7.9	2000
11029	15096	19.0	1.6	12.5	25.5	6.4	2500
11326	-	19.0	1.6	16.0	22.0	5.5	10000
10293	15093	19.0	1.6	16.0	24.0	6.0	7000
10215	-	19.0	1.6	17.5	24.0	4.8	10000
40047	-	19.0	4.8	11.1	25.4	9.5	8000
11181	-	20.0	1.6	12.5	25.5	6.4	2500
30007	15095	20.0	1.6	16.0	24.0	6.5	7000
11025	-	20.5	1.2	16.0	27.0	8.0	4000
-	15098	20.5	1.2	16.0	27.0	8.0	10000
11213	-	25.2	1.2	18.5	31.4	7.5	2000
10487	15099	25.2	1.6	18.5	31.4	8.0	2000
10419	-	25.2	1.6	22.0	30.0	8.0	4000
-	15101	25.5	1.6	22.0	30.0	8.0	10000
15514**	-	30.6	3.2	25.4	44.4	9.9	1000
11214	15102	31.0	1.6	24.9	38.0	7.8	2000
11208	-	32.0	0.8	25.5	44.5	6.4	1000
10446	15105	37.0	1.6	31.2	45.5	9.5	1000
10261	15104	38.0	3.0	32.0	46.0	11.0	1000
11072	15106	50.0	1.6	45.0	60.0	10.0	500

\*Grade VX321 Shore A 43 \*\*Curved internal shoulders

#### TPE

### SR 1749

Part Number		Mounting Hole (d2) mm	Panel Hole Thickness (h) mm	Dimensions (mm)			Standard Pack Quantity
UL94-HB TPE	UL94-V0 TPE			d1	D	H	
HG-2	HG-2-V0	4.8	1.6	3.2	8.0	6.4	1000
HG-2.5	HG-2.5-V0	6.4	1.6	4.0	9.5	6.3	1000
HG-3	HG-3-V0	7.7	0.8	4.8	10.9	4.8	1000
HG-3.5	HG-3.5-V0	8.0	0.8	5.5	11.0	5.5	1000
HG-4	HG-4-V0	9.5	1.6	6.4	14.2	7.0	1000
HG-5	HG-5-V0	10.9	1.6	8.0	14.3	4.8	1000
HG-17	HG-17-V0	11.0	2.0	8.0	16.0	7.0	1000
HG-6	HG-6-V0	12.5	1.6	9.5	17.0	7.0	1000
HG-8	HG-8-V0	16.8	1.6	12.6	21.5	6.4	1000
HG-9	HG-9-V0	17.1	1.6	14.2	22.2	4.8	1000
HG-11	HG-11-V0	18.7	1.6	17.1	23.7	4.8	1000
HG-10	HG-10-V0	18.8	1.6	15.5	22.2	5.6	1000
HG-18	HG-18-V0	19.0	2.4	12.7	24.0	7.1	1000
HG-12	HG-12-V0	24.8	1.6	18.6	31.3	8.0	1000
HG-14	HG-14-V0	25.1	1.6	21.8	30.2	8.0	1000
HG-16	HG-16-V0	31.5	1.6	24.6	38.1	8.0	1000

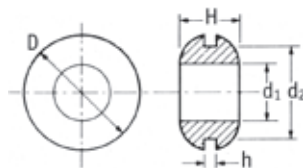
# GROMMETS, STRAIN RELIEF AND BLANKING PLUGS

## Standard Grommets – Metric

SR1700/SR1713

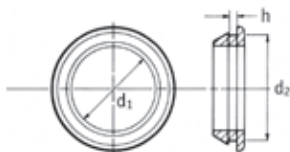
SR1700 Black PVC/SR1713 Black EPDM

- Protect wires and cables passing through panels
- EPDM – heat resistant material for use in extreme temperature environments -40°C to 125°C



Part Number		Dimensions (mm)					Standard Pack Quantity
PVC	EPDM	Mounting Hole (d2)	Panel Hole Thickness (h)	d1	D	H	
498021	498062	5.0	1.0	2.0	8.0	4.0	1000
498022	498063	5.0	1.5	2.0	8.0	4.5	1000
498023	498064	5.0	2.0	2.0	8.0	5.0	1000
498024	498065	5.0	1.0	3.0	8.0	4.0	1000
498025	498066	5.0	1.5	3.0	8.0	4.5	1000
498026	498067	5.0	2.0	3.0	8.0	5.0	1000
498027	498068	7.0	1.5	3.0	10.0	6.0	500
498028	498070	8.0	1.0	4.0	11.0	8.0	500
498029	498071	8.0	2.0	4.0	11.0	6.0	500
498030	498072	8.0	3.0	4.0	11.0	7.0	500
498031	498073	8.0	1.0	6.0	11.0	5.0	500
498032	498074	8.0	2.0	6.0	11.0	6.0	500
-	498075	9.0	1.0	6.0	12.0	5.0	500
-	498076	9.0	1.5	6.0	12.0	5.5	500
-	498077	9.0	2.0	6.0	12.0	6.0	500
-	498078	9.0	3.0	6.0	12.0	7.0	500
-	498079	9.0	4.0	6.0	12.0	8.0	500
498033	498080	10.0	1.0	6.0	14.0	6.0	500
498034	498081	10.0	1.5	6.0	14.0	6.5	500
498035	498082	10.0	2.0	6.0	14.0	7.0	500
498036	498083	10.0	3.0	6.0	14.0	8.0	500
498037	498084	10.0	1.0	8.0	14.0	6.0	500
498038	498085	10.0	1.5	8.0	14.0	6.5	500
498039	498086	10.0	2.0	8.0	14.0	7.0	500
498040	498087	10.0	3.0	8.0	14.0	8.0	500
-	498088	11.0	1.0	8.0	16.0	6.0	250
-	498089	11.0	2.0	8.0	16.0	7.0	250
-	498090	11.0	3.0	8.0	16.0	8.0	250
-	498091	11.0	4.0	8.0	16.0	9.0	250
498041	498092	12.0	1.0	8.0	16.0	6.0	250
498042	498093	12.0	2.0	8.0	16.0	7.0	250
498043	498094	12.0	3.0	8.0	16.0	8.0	250
498044	498095	12.0	4.0	8.0	16.0	9.0	250

Part Number		Dimensions (mm)					Standard Pack Quantity
PVC	EPDM	Mounting Hole (d2)	Panel Hole Thickness (h)	d1	D	H	
498045	498096	12.0	1.0	10.0	16.0	6.0	250
498046	498097	12.0	1.5	10.0	16.0	6.5	250
498047	498098	12.0	2.0	10.0	16.0	7.0	250
498048	498099	12.0	3.0	10.0	16.0	8.0	250
-	498100	14.0	1.0	11.0	18.0	6.0	250
-	498101	14.0	2.0	11.0	18.0	7.0	250
-	498102	14.0	3.0	11.0	18.0	8.0	250
498049	498103	15.0	1.0	11.0	20.0	6.0	250
498050	498104	15.0	2.0	11.0	20.0	7.0	250
498051	498105	15.0	3.0	11.0	20.0	8.0	250
498052	498106	15.0	4.0	11.0	20.0	9.0	250
498053	498107	18.0	1.0	12.0	22.0	6.0	250
498054	498108	18.0	2.0	12.0	22.0	7.0	250
498055	498109	18.0	3.0	12.0	22.0	8.0	250
498056	498110	18.0	4.0	12.0	22.0	9.0	250
498057	498111	22.0	1.0	16.0	27.0	7.0	100
498058	498112	22.0	1.5	16.0	27.0	7.5	100
498059	498113	22.0	2.0	16.0	27.0	8.0	100
498060	498114	22.0	3.0	16.0	27.0	9.0	100
498061	498115	22.0	4.0	16.0	27.0	10.0	100
-	498116	27.0	1.0	21.0	34.0	9.0	50
-	498117	27.0	2.0	21.0	34.0	10.0	50
-	498118	27.0	3.0	21.0	34.0	11.0	50
-	498119	27.0	4.0	21.0	34.0	12.0	50
-	498120	40.0	1.0	31.0	48.0	12.0	25
-	498121	40.0	2.0	31.0	48.0	13.0	25
-	498122	40.0	3.0	31.0	48.0	14.0	25
-	498123	40.0	4.0	31.0	48.0	15.0	25
-	498124	52.0	1.0	41.0	60.0	13.0	10
-	498125	52.0	2.0	41.0	60.0	14.0	10
-	498126	52.0	3.0	41.0	60.0	15.0	10
-	498127	52.0	4.0	41.0	60.0	16.0	10



## Quick-Fit Grommets

SR 1702

Black PVC/TPE, RMS-262/Silicone Rubber, RMS-368

- Snap neatly and quickly into position

PVC

Part Number			Dimensions (mm)		Standard Pack Quantity
Panel Thickness h (mm)			d1	d2	
1.5mm	2.0mm	3.0mm	d1	d2	
16200	16210	16220	6.0	10.0	5000
16201	16211	16221	7.0	11.0	10000
16202	16212	16222	8.0	12.0	10000
16203	16213	16223	10.0	14.0	10000
16204	16214	16224	12.0	16.0	10000
16205	16215	16225	14.0	18.0	10000
16206	16216	16226	16.0	20.0	4000
16207	16217	16227	18.0	22.0	4000
16208	16218	16228	22.0	26.0	4000
16209	16219	16229	24.0	28.0	2000

TPE/Silicone

Part Number			Dimensions (mm)		Standard Pack Quantity
Panel Thickness h (mm)			d1	d2	
1.5mm	2.0mm	3.0mm	d1	d2	
TPE	TPE	Silicone			
QFG-16200	-	-	6.0	10.0	1000
QFG-16201	-	-	7.0	11.0	1000
QFG-16203	-	-	10.0	14.0	1000
QFG-16204	-	-	12.0	16.0	1000
QFG-16207	-	-	18.0	22.0	1000
-	QFG-16207	-	22.0	26.0	1000
-	-	QFG-1	13.0	18.5-20	1000

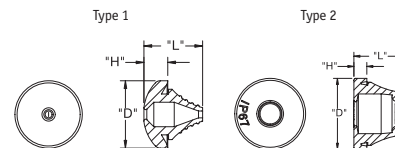
## Grommets IP67

SR 1703

EPDM

- Provide dust and watertight seal
- Suitable for external applications
- Act as a blanking plug until cable is installed
- Withstand vibration
- Quick and easy to install:

1. Press into hole
2. Puncture diaphragm by inserting wire
3. Gently pull cable back to secure



### Metric Range (Type 2)

Part Number (Grey)	Part Number (Black)	Panel Hole Size	Dimensions (mm)			Panel Thickness Range (mm)	Compatible Cable Diameter Range (mm)	Standard Pack Quantity
			D	L	H			
283120001499	283120059999	M12	20.0	12.8	7.2	0.5-2.0	4.0-7.0	50
283160001499	283160059999	M16	21.0	18.0	6.7	1.0-4.0	5.0-9.0	50
283200001499	283200059999	M20	25.5	20.0	6.6	1.0-4.0	8.0-13.0	50
283250001499	283250059999	M25	30.5	21.3	6.0	1.0-4.0	11.0-17.0	50
283320001499	283320059999	M32	38.5	24.6	6.0	1.0-4.0	15.0-20.0	25
283400001499	283400059999	M40	48.5	29.5	7.8	1.0-4.0	19.0-28.0	25
283500001499	283500059999	M50	60.5	34.8	9.8	1.0-4.0	27.0-35.0	10
283630001499	283630059999	M63	73.5	40.0	10.0	1.0-4.0	34.0-45.0	5

### PG Range

Part Number (Grey) Type 2	Part Number (Black) Type 2	Part Number (Type 1)	Panel Hole Size	Dimensions (mm)			Panel Thickness Range (mm)	Compatible Cable Diameter Range (mm)	Standard Pack Quantity
				D	L	H			
283120101499	283120159999	LTG-199017*	PG-7	20.0	12.6	7.2	0.5-2.0	3.0-5.0	50
283160101499	283160159999	-	PG-9	21.0	18.0	7.5	1.0-4.0	5.0-7.0	50
283200101499	283200159999	-	PG-11	24.0	19.8	7.1	1.0-4.0	7.0-10.0	50
283250101499	283250159999	-	PG-16	28.0	21.6	6.9	1.0-4.0	10.0-14.0	50
283320101499	283320159999	-	PG-21	35.0	24.6	7.0	1.0-4.0	14.0-20.0	25
283400101499	283400159999	-	PG-29	46.0	28.5	8.5	1.0-4.0	20.0-26.0	25
283500101499	283500159999	-	PG-36	58.0	34.9	11.0	1.0-4.0	26.0-35.0	10

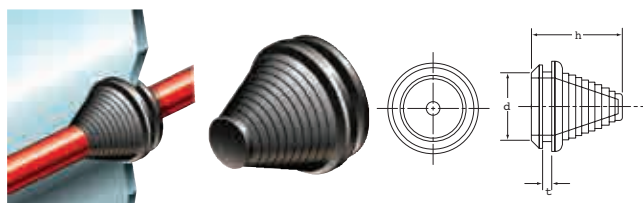
\* Standard Pack Quantity = 1000

## Stepped Grommets

SR 1709

Black PVC

- Stepped sleeve can be cut to requirements
- Suit a range of cable diameters
- Protect cables passing through panels
- Act as blanking plug until cut



Part Number	Dimensions (mm)			Cable Range (mm)	Standard Pack Quantity
	d	t	h		
1251347	12.7	3	32.5	5-9	1000
1251348	21.0	3	27.5	5-17	1000
1251349	26.0	3	29.5	10-22	1000

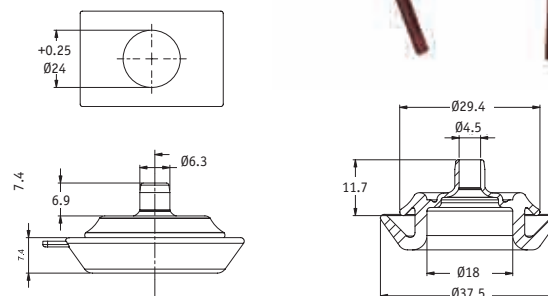
## Angular Hole Grommet

SR 1761

AHG

Black EPDM 60 Shore A RMS-420

- Max Angle 45 °



Part Number	Dimensions (mm)			Standard Pack Quantity
	Ø Cable Size	Panel Thickness	Hole Ø	
AHG-1	5-7	1 - 2.5	24	500



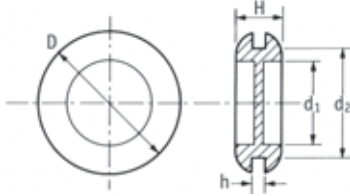
# GROMMETS, STRAIN RELIEF AND BLANKING PLUGS

## Diaphragm Grommets

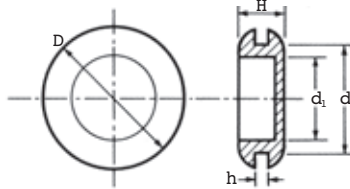
SR 1705

Black PVC/TPE, RMS-262

- Thin central film can be pierced to allow a range of different-sized wires to pass through



Type 1



Type 2

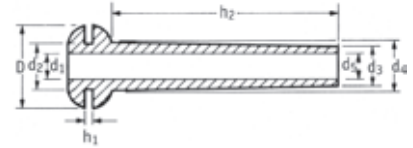
Part Number	Type	Material	Dimensions (mm)					Standard Pack Quantity
			D	d1	d2	h	H	
19426	1	PVC	19.0	11.0	16.0	1.5	5.8	5000
19427	1	PVC	22.0	12.5	16.0	2.4	8.0	5000
19428	1	PVC	25.5	15.5	19.0	1.6	8.0	2500
15512	1	PVC	25.4	15.9	19.0	2.0	7.9	2500
10134	1	PVC	25.5	15.5	19.0	2.4	8.8	2500
19429	1	PVC	25.5	15.5	19.0	3.2	9.6	2500
10187	1	PVC	25.5	15.5	20.0	1.6	8.0	2500
10806	1	PVC	36.5	19.0	25.5	2.4	8.4	2000
19430	1	PVC	39.0	25.5	32.0	2.4	8.0	1000
19431	1	PVC	39.0	25.5	32.0	4.0	9.5	1000
19432	2	PVC	12.7	6.4	9.9	1.6	6.7	10000
19433	2	PVC	15.7	9.5	12.5	1.5	6.4	10000
DGB-2.5	2	TPE	9.4	4.1	6.4	0.8	3.6	1000
19434	2	PVC	17.5	8.0	11.0	1.6	8.0	10000
DGB-4	2	TPE	12.7	6.4	9.9	1.5	6.6	1000
19435	2	PVC	19.0	11.0	16.0	1.6	8.0	5000
DGB-5	2	TPE	15.7	9.5	12.5	1.5	6.4	1000
19436	2	PVC	25.5	18.8	22.0	1.6	8.0	4000
DGB-6	2	TPE	17.5	8.0	11.0	1.5	8.0	1000
19437	2	PVC	25.5	16.0	19.0	1.5	7.0	4000
DGB-7	2	TPE	19.0	11.0	16.0	1.5	8.0	1000
19438	2	PVC	25.5	16.0	20.0	1.5	7.0	4000
DGB-10	2	TPE	25.5	18.4	22.0	1.5	8.0	1000
19439	2	PVC	30.0	20.5	25.5	1.5	8.0	2000
DGB-11	2	TPE	25.5	16.0	19.0	1.5	7.0	1000
19442	2	TPE	49.0	31.0	42.0	2.4	10.1	1000
DGB-13	2	TPE	30.0	20.5	25.5	1.5	8.0	1000

## Grommet Sleeves

SR 1710

Black PVC

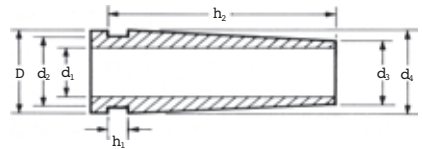
- Provide extra support and protection for cables and wires passing through panels



Type 1

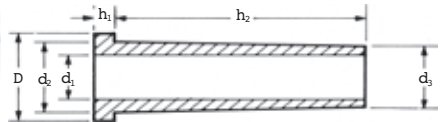
Part Number	Dimensions (mm)								Standard Pack Quantity
	D	d2	d1	d5	h1	d4	d3	h2	
12461*	14.2	7.6	6.1	5.5	3.8	8.2	7.1	31.7	1000
60466	14.3	8.7	5.1	5.1	1.6	8.7	7.1	42.0	1000
50687	14.2	9.5	6.4	6.4	2.4	9.5	7.9	14.3	1000
12468	14.0	9.5	6.4	6.4	2.6	9.5	7.9	23.0	1000

\*Features a flange on the narrow end.



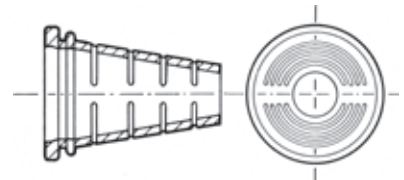
Type 2

Part Number	Dimensions (mm)						Standard Pack Quantity	
	D	d2	d1	h1	d4	d3		h2
12462	15.1	12.7	9.5	3.2	14.3	11.9	35.5	1000
51409	19.1	12.7	9.7	0.8	15.1	12.2	26.8	1000



Type 3

Part Number	Dimensions (mm)						Standard Pack Quantity
	D	d1	d2	d3	h1	h2	
40016	9.5	4.0	7.1	5.4	2.6	21.8	1000
15517	9.8	4.0	7.5	5.6	2.4	38.9	5000
12463	11.5	6.8	9.3	9.3	1.6	36.0	1000
60218	14.0	6.2	9.6	8.0	1.6	41.3	1000
60752	14.3	7.9	11.1	10.5	3.2	38.1	1000
12464	19.1	10.3	14.3	12.7	3.2	38.1	1000



Multi-Cable Grommet

- Graduated sleeve can be cut to requirements

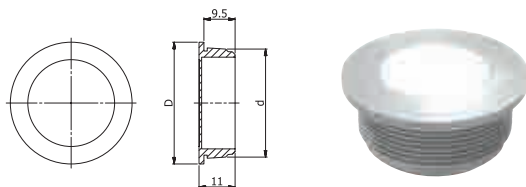
Part Number	Dimensions (mm)			Standard Pack Quantity
	Hole Size (mm)	Panel Thickness	Cable Range	
12312	20.0	1.6	8.0-17.0	1000

## Push In Twin Component Grommet

SR 1753

Grey Polyethylene/Thermoplastic elastomere

- IP 66
- Temperature range: -40°C to 80°C, intermittent to approximately 100°C
- Dust tight, quick and easy mounting
- For enclosures with more than 2mm wall thickness



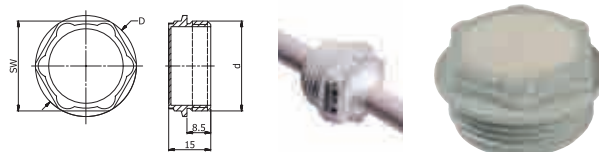
Part Number	Dimensions (mm)			Cable Range (mm)	Standard Pack Quantity
	d	D	Height		
494632	16.0	21.2	11.0	1.0 - 9.0	100
494633	20.0	25.2	11.0	1.0 - 13.0	100
494634	25.0	30.2	11.0	1.0 - 18.0	100
494635	32.0	37.2	11.0	1.0 - 25.0	50

## Screw In Twin Component Grommet

SR 1752

Grey Polypropylene/Thermoplastic elastomere

- IP 66
- Temperature range: -30°C to 80°C, intermittent to approximately 100°C
- Dust tight, quick and easy mounting
- For applications with threaded holes or fixing without locknut



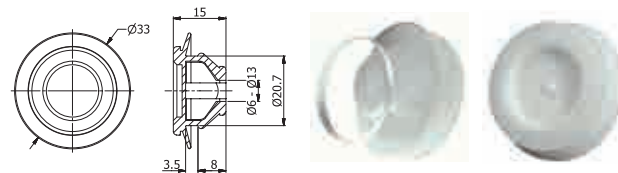
Part Number	Thread Size (mm)	Dimensions (mm)			Cable Range (mm)	Standard Pack Quantity
		d	D	Height		
494628	M16 x 1.5	17.0	19.0	15.0	1.0 - 9.0	100
494629	M20 x 1.5	20.0	22.0	15.0	1.0 - 13.0	100
494630	M25 x 1.5	24.0	27.0	15.0	1.0 - 18.0	100
494631	M32 x 1.5	32.0	36.0	15.0	1.0 - 25.0	50

## Strain Relief Membrane Entry

SR 1755

Grey Polyamide/Thermoplastic Elastomere

- IP 66/67
- Temperature range: -40°C to 65°C
- UV resistant
- Suitable for applications where space is limited and flexibility and appearance are important
- Wall thickness: 0.8-3.5mm



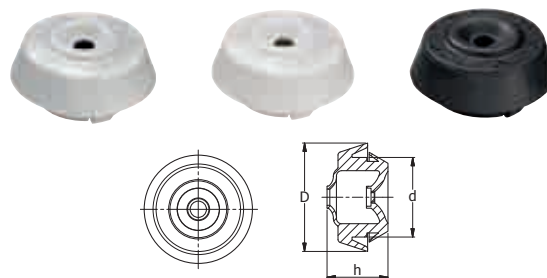
Part Number	Dimensions (mm)			Cable Range (mm)	Standard Pack Quantity
	d	D	Height		
494642	20.7	33	15.0	60.-13.0	15.0

## Membrane Entry

SR 1754

Nylon/Thermoplastic Elastomere

- IP 67
- Temperature range: -20°C to 125°C
- Suitable for unthreaded holes
- Quick and easy installation without tools
- Cable anchorage type A (same standard as most cable glands)
- Sealed until the cable is installed
- Push out the membrane using the cable
- Panel Thickness: 1.5-5.0mm



Part Number			Panel Hole Size	Dimensions (mm)			Compatible Cable Diameter Range (mm)	Compatible Panel Hole Thickness (mm)	Standard Pack Quantity
Grey	Black	White		h	d	D			
284200022545	284200059945	284200016445	M20	17.2	20.5	25.0-29.0	4.0-11.0	5.5	50
284250022545	284250059945	284250016445	M25	17.2	25.5	30.0-35.0	4.0-13.0	5.7	50
284200122545	284200159945	284200116445	M20	19.0	20.5	25.0-30.0	4.0-11.0	5.5	50
284250122545	284250159945	284250116445	M25	19.0	25.5	30.0-36.0	4.0-13.0	5.7	50

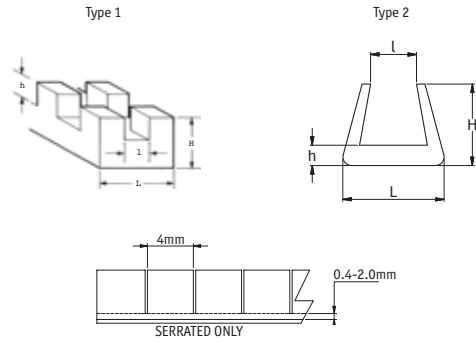
# GROMMETS, STRAIN RELIEF AND BLANKING PLUGS

## Grommet Strips

SR 1712

Natural Polythene/Nylon, RMS-413

- Protect against damage from sharp panel edges
- Ideal for tight radii in panel cut-outs and holes

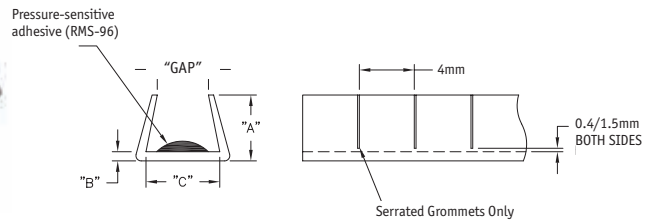


Part Number		Type	Material	Dimensions (mm)				Standard Pack Quantity
Solid Lengths	Serrated			L	l	H	h	
-	49087	1	Polythene	2.20	0.9	2.4	1.8	25m
-	49088	1	Polythene	3.80	1.4	4.0	2.5	25m
-	49089	1	Polythene	4.50	2.3	4.0	2.5	25m
-	49090	1	Polythene	5.60	3.3	4.0	2.5	25m
-	49091	1	Polythene	8.30	5.0	5.8	4.0	25m
-	49092	1	Polythene	9.80	6.6	6.1	4.3	25m
NGSE-1	SGSE-1	2	Nylon	2.40	0.5	3.2	0.8	30m
NGSE-2	SGSE-2	2	Nylon	4.40	0.9	4.4	0.8	30m
NGSE-2.5	SGSE-2.5	2	Nylon	4.40	1.5	4.4	0.8	30m
-	SGSE-3	2	Nylon	6.40	2.7	4.8	1.2	30m
NGSE-4	SGSE-4	2	Nylon	6.10	4.2	4.8	1.2	30m
NGSE-5	SGSE-5	2	Nylon	8.00	4.8	4.8	1.2	30m
-	SPGSE-1	2	Polythene (RMS-412)	2.53	0.5	3.2	0.8	30m
-	SPGSE-1.5	2	Polythene (RMS-412)	3.20	0.9	4.4	0.8	30m
PGSE-2	SPGSE-2	2	Polythene (RMS-412)	5.00	0.6	4.4	0.8	30m
PGSE-2.5	SPGSE-2.5	2	Polythene (RMS-412)	4.40	1.5	4.4	0.8	30m
PGSE-3	SPGSE-3	2	Polythene (RMS-412)	6.40	2.7	4.8	1.2	30m
-	SPGSE-4	2	Polythene (RMS-412)	7.20	4.2	4.8	1.2	30m
PGSE-5	SPGSE-5	2	Polythene (RMS-412)	7.20	4.8	4.8	1.2	30m

## Continuous Grommet Strip with Adhesive

SR 1764

NGSG/SGSG/PGSG/SPGSG



Part Number		Colour	Material	Dimensions (mm)					Standard Pack Quantity
Solid Lengths	Serrated Lengths			Panel Thickness Range	"GAP"	"A"	"B"	"C"	
NGSG-2	SGSG-2	Natural	UL94-HB Nylon, RMS-88	0.9 - 1.8	0.9	4.4	0.8	2.8	30m Roll
-	SGSG-2B	Black	UL94-HB Nylon, RMS-88	0.9 - 1.8	0.9	4.4	0.8	2.8	30m Roll
NGSG-2.5	SGSG-2.5	Natural	UL94-HB Nylon, RMS-88	1.8 - 2.7	1.5	4.4	0.8	2.8	30m Roll
NGSG-3	SGSG-3	Natural	UL94-HB Nylon, RMS-88	2.7 - 4.2	2.7	4.8	1.2	4	30m Roll
PGSG-2	SPGSG-2	Natural	Polyethylene, RMS-418	0.9 - 1.8	0.9	4.4	0.8	2.8	30m Roll
PGSG-2B	SPGSG-2B	Black	Polyethylene, RMS-418	0.9 - 1.8	0.9	4.4	0.8	2.8	30m Roll
PGSG-6*	SPGSG-6*	Natural	Polyethylene, RMS-418	0.9 - 1.8	0.9	4.1	0.6	1.5	30m Roll
PGSG-6B*	-	Black	Polyethylene, RMS-418	0.9 - 1.8	0.9	4.1	0.6	1.5	30m Roll
PGSG-2.5	SPGSG-2.5	Natural	Polyethylene, RMS-418	1.8 - 2.7	1.5	4.4	0.8	2.8	30m Roll
PGSG-2.5B	SPGSG-2.5B	Black	Polyethylene, RMS-418	1.8 - 2.7	1.5	4.4	0.8	2.8	30m Roll
-	SPGSG-7*	Natural	Polyethylene, RMS-418	1.8 - 2.7	1.5	4.8	0.9	2.5	30m Roll
PGSG-3	SPGSG-3	Natural	Polyethylene, RMS-418	2.6 - 4.2	2.7	4.8	1.2	4	30m Roll
PGSG-3B	SPGSG-3B	Black	Polyethylene, RMS-418	2.6 - 4.2	2.7	4.8	1.2	4	30m Roll
-	SPGSG-8*	Natural	Polyethylene, RMS-418	2.6 - 4.2	2.7	4.8	0.9	4	30m Roll

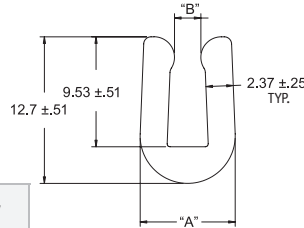
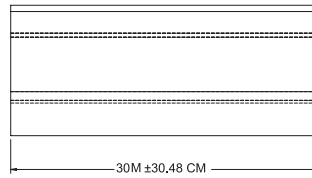
\*Parts are extra flexible

## Rubber Edge Grommet

SR 1770

RG

Black, TPE, RMS-214



Part Number	Dimensions (mm)			Standard Pack Quantity
	Panel Thickness	"A"	"B"	
RG-1	1.6	6.74	0.76	30m Roll
RG-2	2.36	7.44	1.52	30m Roll
RG-3	3.18	8.23	2.29	30m Roll

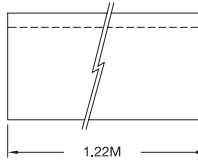
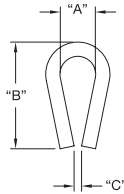
## Duro-Strip Channel

SR 1775

DSC

RMS-21, Nylon 66.6

RMS-413, Nylon 6



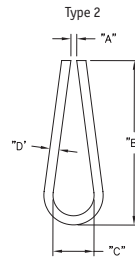
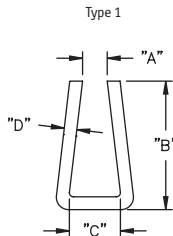
Part Number	Dimensions (mm)				Material	Standard Pack Quantity
	"A" ± 0.4	"B" ± 0.8	"C"	Panel Thickness		
DSC-5-48	1.6	7.6	0.8	0.8	MDS Filled Nylon, RMS-21	1.22m lengths x 25
DSC-1-48	3.2	9.5	0.5	1.2	RMS-413	1.22m lengths x 25
DSC-2-48	4.8	12.7	0.8	1.2	RMS-413	1.22m lengths x 25
DSC-3-48	6.4	15.9	1.1	1.6	MDS Filled Nylon, RMS-21	1.22m lengths x 25

## Channel

SR 1778

CH

White, Polystyrene, RMS-16



Part Number	Type	Dimensions (mm)				Standard Pack Quantity
		"A"	"B"	"C" Min.	"D"	
CH200X250-48	1	5.1	9.5	6.4	0.8	1.22m lengths x 25
CH15X50-48	1	0.4	11.1	1.3	0.8	1.22m lengths x 25
CH20X141-48	2	0.5	14.3	3.6	0.8	1.22m lengths x 25

# GROMMETS, STRAIN RELIEF AND BLANKING PLUGS

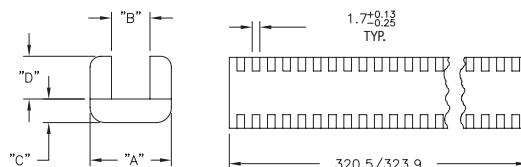
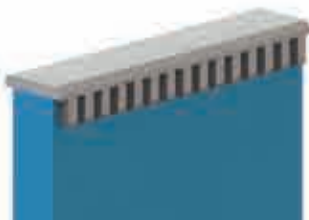
## Moulded Grommet Strip

SR 1781

MGS

Natural, Nylon 6/6, RMS-01

- Complies with NASM21266
- Minimum hole  $\varnothing$  25.4mm



Part Number	Dimensions (mm)				Standard Pack Quantity (Pieces)	
	Panel Thickness	"A" + 0.38/-0.13	"B" + 0.38/-0.13	"C" + 0.38/-0.13		"D" + 0.38/-0.13
MGS-1-01	0.4-1.3	3.8	1.4	1.4	2.5	100
MGS-2-01	1.3-2.2	4.4	2.3	1.4	2.5	100
MGS-3-01	2.2-3.3	5.6	3.3	1.4	2.5	100
MGS-4-01	3.3-4.9	8.3	5.0	1.8	4.1	100
MGS-5-01	4.9-6.5	9.8	6.6	1.8	4.3	100
MGS-6-01	6.5-8.1	11.3	8.1	1.9	4.6	100
MGS-8-01	9.7-13	16.3	13.1	1.9	4.6	50

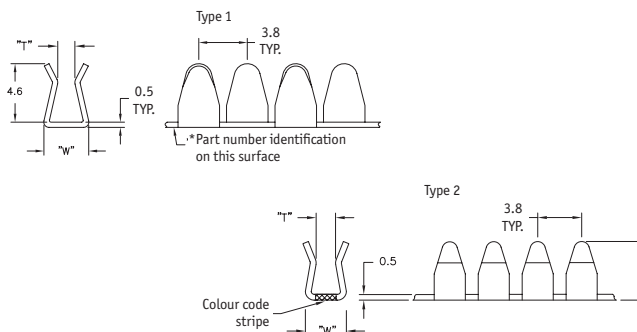
## Metal Continuous Grommet

SR 1791

MCG/MCGF

Black, 304 Stainless Steel, RMS-283; Coating: Nylon 11, RMS-192

- Dielectric Strength: 1000 Volts @ 50 Hz
- Operating Temperature Range: -40°C to 140°C
- UL94-V0 flammability rating
- MCGF Series is more flexible than the MCG series because of its design



Part Number	Type	Dimensions (mm)		Colour Code Strip. RMS-346	Standard Pack Quantity
		"T"	"W"		
MCG-1N	1	0.7-1.1	3.6	Not Applicable	30m reel
MCG-2N	1	1.1-1.4	3.6	Not Applicable	30m reel
MCG-3N	1	1.4-1.7	3.6	Not Applicable	30m reel
MCG-4N	1	1.7-2.3	4.6	Not Applicable	30m reel
MCG-6N	1	2.9-3.3	4.6	Not Applicable	30m reel
MCGF-1N	2	0.7-1.1	3.3	White	30m reel
MCGF-2N	2	1.1-1.4	3.3	Pink	30m reel
MCGF-3N	2	1.4-1.7	3.3	Yellow	30m reel

Hand held cutting tool needed, order part number MCGS-1.

## Metal Continuous Cushioned Grommet

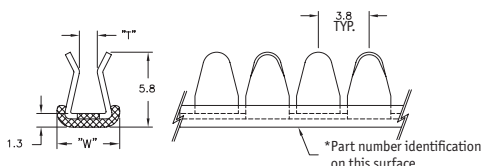
SR 1803

MCCG

Black, 304 Stainless Steel, RMS-283; Coating: Nylon 11, RMS-192,

Cushion: TPE, 60 Shore D, RMS-300

- Dielectric Strength: 1500 Volts @ 50 Hz
- Operating Temperature Range: -40°C to 85°C
- UL94-V0 flammability rating



Part Number	Dimensions (mm)		Standard Pack Quantity
	"T" Panel Thickness	"W"	
MCCG-2N	1.1-1.4	4.8	30m reel
MCCG-3N	1.4-1.7	4.8	30m reel
MCCG-4N	1.7-2.3	5.8	30m reel
MCCG-6N	2.9-3.3	5.8	30m reel

Hand held cutting tool needed, order part number MCGS-1

## Edge Wire Saddle

SR 1834

EWSE

Black Nylon, UL94-V2 Nylon 6/6, RMS-01

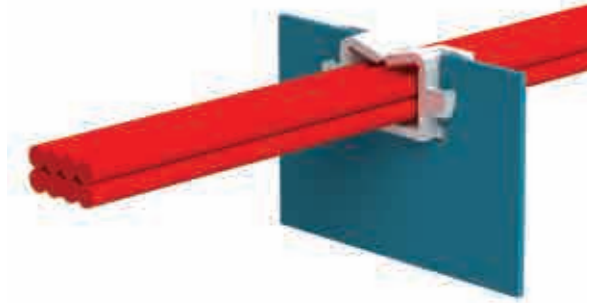


Fig. 1

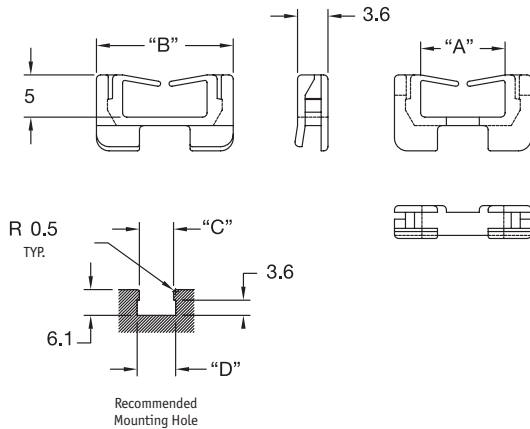
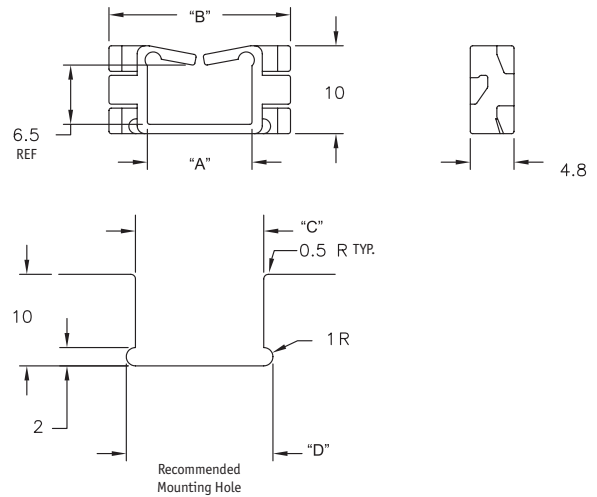


Fig. 2



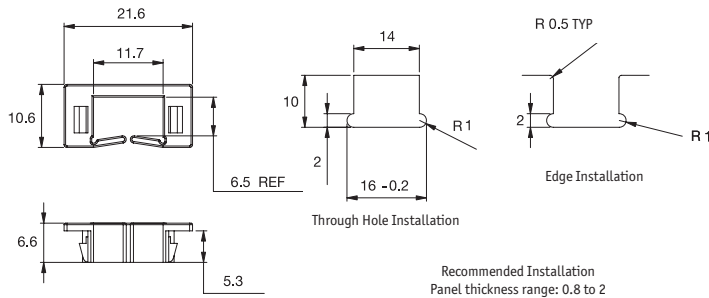
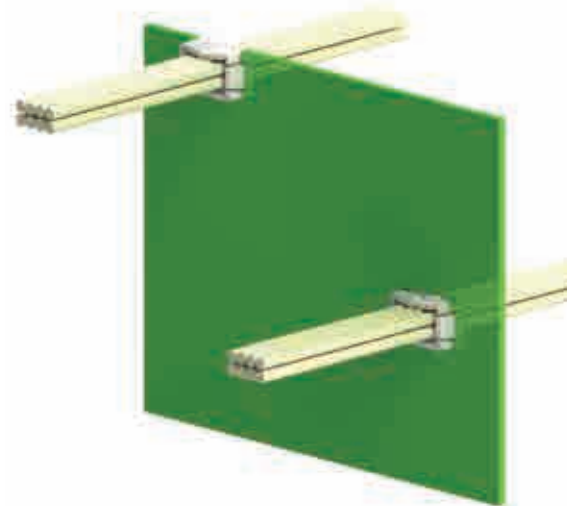
Part Number	Dimensions (mm)					Colour	Fig.	Standard Pack Quantity
	"A"	"B"	"C"	"D"	Panel Thickness			
EWSE-8.1-01	5.0	11.3	8.1	9.1	0.8 - 1.6	Natural	1	1000
EWSE-12.8-01	10.0	16.2	12.8	13.8	0.8 - 1.6	Natural	1	1000
EWSE-1-01	11.6	20.0	14.0	16.0	0.8 - 1.2	Black	2	1000
EWSE-2-01	11.6	20.0	14.0	16.0	1.2 - 1.6	Natural	2	1000
EWSE-3-01	11.6	20.0	14.0	16.0	1.6 - 2.0	Grey	2	1000

## Edge Wire Saddle

SR 1835

EWSE

Natural, Nylon 6/6, RMS-01

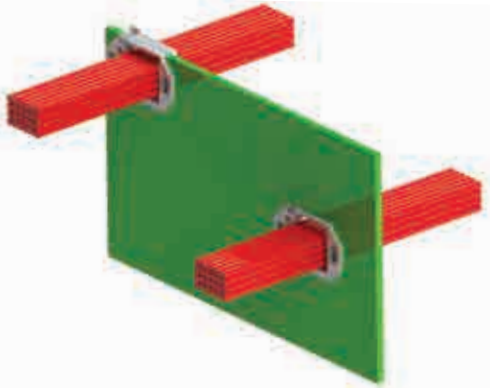


Product Number	Standard Pack Quantity
EWSJS-1-01	1000

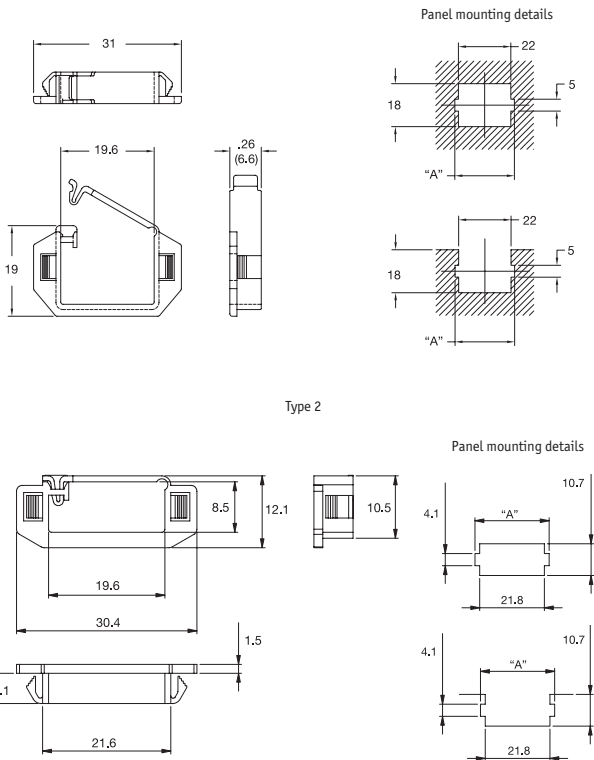
# GROMMETS, STRAIN RELIEF AND BLANKING PLUGS

## Hinged Edge Wire Saddle

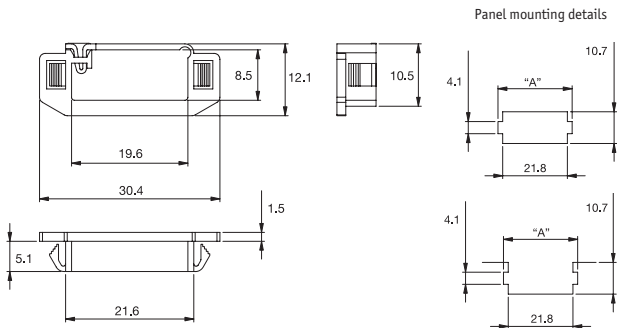
SR 1844  
HEWSE  
Natural



Type 1



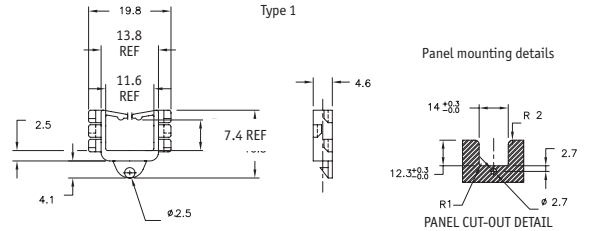
Type 2



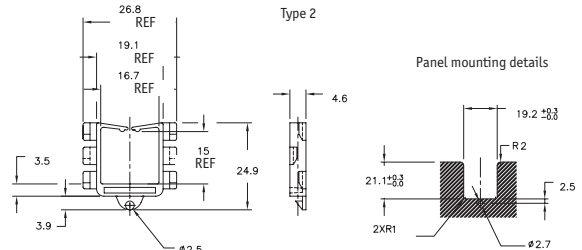
Part Number		Type	Dimensions (mm)		Standard Pack Quantity
UL94-V2 Nylon 6/6, RMS-01	UL94-V0 Nylon F.R. 6/6, RMS-19		Panel Thickness	"A"	
HEWSE-22-01	HEWSE-22-19	1	0.5 - 1.6	25	1000
HEWSE-25-01	HEWSE-25-19	2	0.8 - 1.6	25	1000
HEWSE-25-01	HEWSE-25-19	2	2.0	26	1000

## Edge Wire Saddle

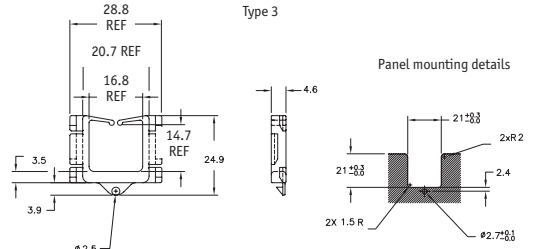
SR 1846  
LEWSE  
Natural



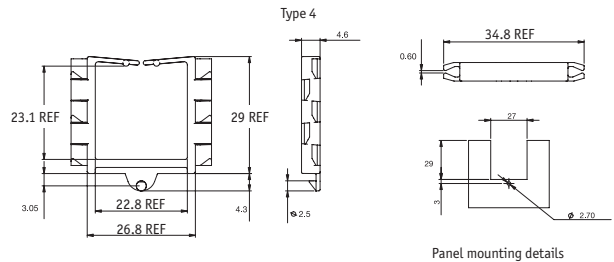
Type 2



Type 3



Type 4



Part Number		Type	Panel Thickness (mm)	Standard Pack Quantity
Nylon 6/6, RMS-01	UL94-V0 Nylon 6/6, RMS-19			
LEWSE-14-01	LEWSE-14-19	1	0.8-1.6	1000
LEWSE-19-01	LEWSE-19-19	2	0.8-1.6	1000
LEWSE-21-01	-	3	0.8-1.6	1000
LEWSE-27-01	LEWSE-27-19	4	0.8-1.6	1000

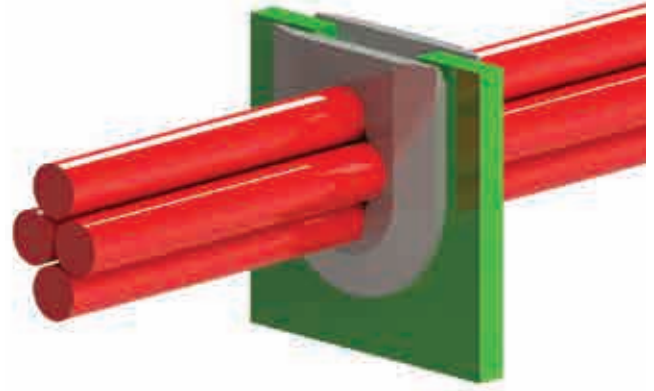
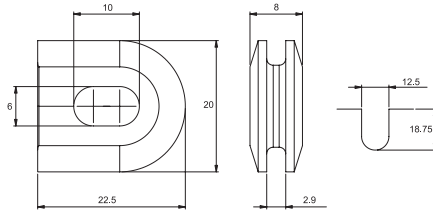
## Cable Grommet

SR 1847

CGB

**Black Silicone Rubber 65 Shore A, RMS-379**

- Continuous working temperature: 180°C
- Dimensions reflect product in an installed state



Part Number	Max. Panel Thickness (mm)	Standard Pack Quantity
1342664	2.8	1000

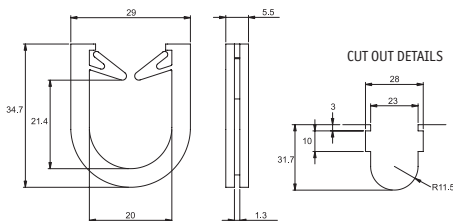
## Cable Grommet

SR 1848

CGC

**Natural UL94-V2 Nylon 6/6, RMS-01**

- Continuous working temperature: 80°C
- Dimensions reflect product in an installed state



Part Number	Panel Thickness (mm)	Standard Pack Quantity
CGC-1-01	1.2	250

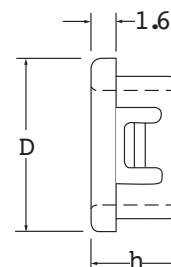
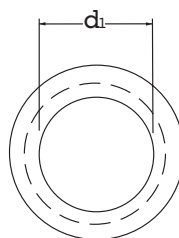
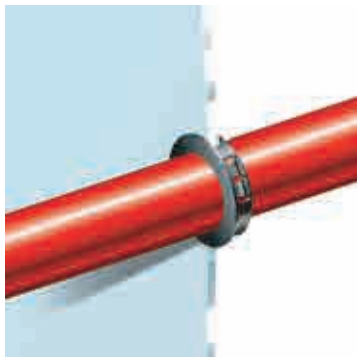


## Snap-Fit Bushes

### SR 1706

#### Black Nylon – (Heat Stabilised to UL94-V2)

- Effortless snap-fit into panels
- Easy installation, no tools required
- Protect against rough panel hole edges



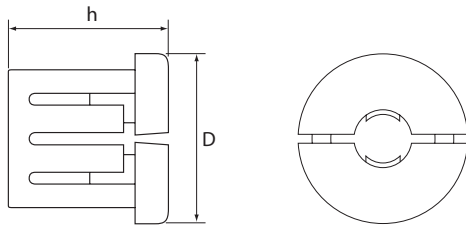
Part Number	Panel Dimensions (mm)		Part Dimensions (mm)			Standard Pack Quantity
	Mounting Hole Dia.	Max. Panel Thickness	d1	D	h	
465903	4.7	1.6	3.2	6.4	5.9	1000
110492	6.6	1.6	3.2	8.0	8.0	1000
465905	7.1	1.6	5.5	8.7	5.9	1000
PGSB-3	7.9	1.6	6.3	9.5	5.9	1000
PGSB-2	8.0	1.6	4.8	9.5	8.0	1000
465907	8.7	1.6	5.5	10.3	6.4	1000
465908	9.5	1.6	6.3	11.1	6.4	1000
110494	9.5	3.2	4.8	11.9	10.3	1000
PGSB-5	9.5	3.2	6.4	11.9	10.3	1000
465909	10.3	1.6	7.1	11.9	6.4	1000
465910	11.1	1.6	7.9	12.7	6.4	1000
PGSB-6	11.0	3.2	6.4	13.5	10.3	1000
PGSB-7	11.0	3.2	8.0	13.5	10.3	1000
PGSB-8	11.0	3.2	6.2	13.5	10.3	1000
PGSB-9	11.9	1.6	8.6	13.5	6.4	1000
PGSB-12	12.7	1.6	9.5	14.3	6.4	1000
22MP05004	12.7	3.2	6.4	14.7	10.3	1000
22MP05005	12.7	3.2	8.0	14.7	10.3	1000
110501	12.7	3.2	9.5	14.7	10.3	1000
465893	12.7	6.4	9.9	14.7	14.3	1000
PGSB-13	13.5	1.6	10.3	15.1	6.4	1000
PGSB-14	14.3	3.2	8.0	16.7	10.3	1000
110504	14.3	3.2	11.0	16.7	10.3	1000
PGSB-18	15.9	3.2	11.0	18.2	10.3	1000
110507	15.9	3.2	12.7	18.2	10.3	1000
PGSB-20	17.5	3.2	12.7	19.8	10.3	1000
PGSB-21	17.5	3.2	14.3	19.8	10.3	1000
PGSB-24	19.1	1.6	15.9	21.0	6.4	1000
PGSB-23	19.0	3.2	14.3	21.4	10.3	1000
22MP07510	19.0	3.2	16.0	21.4	10.3	1000
PGSB-25	19.8	1.6	15.9	21.8	6.4	1000
22MP08109	20.6	3.2	14.3	22.6	10.3	1000

Part Number	Panel Dimensions (mm)		Part Dimensions (mm)			Standard Pack Quantity
	Mounting Hole Dia.	Max. Panel Thickness	d1	D	h	
22MP08110	20.6	3.2	16.0	22.6	10.3	1000
PGSB-30	22.2	1.6	19.0	23.8	6.4	1000
465894	22.2	6.4	17.5	24.2	14.3	1000
PGSB-29	22.2	3.2	17.5	24.2	11.5	1000
465919	25.4	1.6	22.3	27.0	6.4	1000
110522	25.4	3.2	19.0	28.6	11.5	1000
465895	25.4	6.4	19.4	28.6	14.3	1000
PGSB-32	27.8	3.2	20.5	30.9	11.5	1000
PGSB-33	27.8	3.2	22.0	30.9	11.5	1000
PGSB-34	27.8	3.2	24.0	30.9	11.5	1000
465896	27.8-28.6	6.4	23.8	30.9	14.3	1000
465898	31.8	6.4	25.4	33.2	14.3	1000
22MP11815	30.2	3.2	24.0	33.3	11.5	250
465897	30.2	6.4	23.8	33.3	14.3	1000
PGSB-35	32.0	3.2	24.0	34.5	11.5	1000
PGSB-36	34.9	3.2	25.4	37.3	11.5	1000
465899	34.9	6.4	25.4	38.1	14.3	1000
PGSB-37	38.0	3.2	27.0	40.9	11.5	1000
PGSB-38	38.0	3.2	28.5	40.9	11.5	1000
PGSB-39	38.0	3.2	33.3	40.9	11.5	1000
465900	38.1	6.4	33.3	41.2	14.3	500
465901	44.5	6.4	34.9	47.6	14.3	500
PGSB-40	45.0	3.2	35.0	47.6	11.5	1000
465902	50.8	6.4	41.3	54.0	14.3	500
PGSB-41	51.0	3.2	41.0	54.0	11.5	1000
465884	53.1	6.4	46.0	59.7	18.3	500
PGSB-43	57.2	6.4	46.0	61.1	18.3	500
465886	63.5	6.4	51.0	67.5	18.1	500
465887	76.2	6.4	61.9	80.2	18.1	500
465888	85.7	6.4	71.4	92.9	18.3	500
465889	88.9	6.4	74.6	92.8	18.1	250
465890	101.6	6.4	87.3	105.6	18.1	250

## Snub Bushes

SR 1724

Black Nylon 6.6 – (Heat Stabilised to UL94-V2)



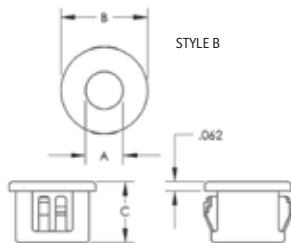
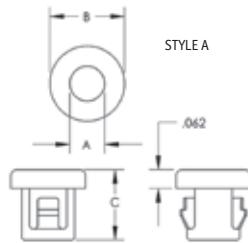
Part Number	Dimensions (mm)			Part Dimensions (mm)		Standard Pack Quantity
	Mounting Hole Dia.	Max. Panel Thickness	Cable Size (mm)	D	h	
SB-1	9.5	3.2	3.8	11.4	12.1	500
SB-2	11.1	3.2	5.6	14	12.1	500
SB-3	12.7	3.2	7.1	16	12.1	500
466908	9.5	3.2	3.2	11.7	10.7	1000
466909	11.1	3.2	4.8	11.9	11.2	1000
466910	12.7	6.4	3.2	14.2	11.2	1000

## Clear Blanking Plugs

SR F-0001

Clear Copolyester

- Flat headstyle to minimise distortion



Part Number	Dimensions (mm)					Standard Pack Quantity
	Style	Panel Thickness	A	B	C	
62WP0187	A	1.6	4.8	6.4	5.9	1000
62WP0250	A	1.6	6.4	8	8.0	1000
62WP0312	A	1.6	8.0	9.5	8.0	1000
62WP0375	B	3.2	9.5	12	10.3	500
62WP0437	B	3.2	11.0	13.5	10.3	1000
62WP0500	B	3.2	12.7	14.6	10.3	1000
62WP0625	B	3.2	15.9	18.2	10.3	1000

## QUESTIONS? GIVE US A CALL

Our Customer Service advisors are here to help you find the right product for your application.

Call 0845 758 5070

[www.essentracomponents.co.uk](http://www.essentracomponents.co.uk)

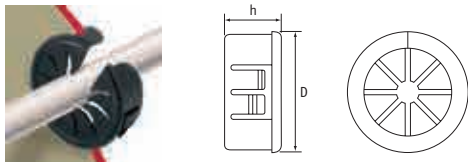


# GROMMETS, STRAIN RELIEF AND BLANKING PLUGS

## Open/Closed Universal Bushes

SR 1737

Black Nylon 6.6 - (Heat Stabilised to UL94-V2)

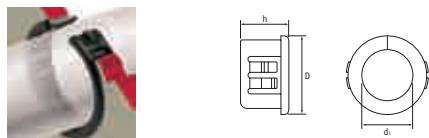


Part Number	Panel Dimensions (mm)		Part Dimensions (mm)			Standard Pack Quantity
	Mounting Hole Dia.	Max. Panel Thickness	Max. I.D.	D	h	
466888	15.9	3.2	11.1	18.2	10.3	1000
466889	19.0	3.2	12.7	20.6	10.3	500
466890	22.2	3.2	14.3	23.4	10.3	500
466891	25.4	3.2	19.0	27.0	10.3	500
466892	27.8	3.2	20.6	30.2	10.3	100
466893	31.8	3.2	23.8	37.3	10.3	100
466894	34.9	3.2	25.4	37.3	10.3	100
466895	38.1	3.2	26.9	40.1	10.7	100

## Open/Closed Bushes

SR 1738

Black Nylon 6.6 - (Heat Stabilised to UL94-V2)



Part Number	Part Dimensions (mm)					Standard Pack Quantity
	Mounting Hole Diameter	Max. Panel Thickness	D	d1	h	
PGSA-0407A*	7.0	1.0	10.4	4.8	5.0	1000
PGSA-1013A*	13.0	1.5	16.2	9.2	5.3	500
PGSA-1316A*	16.0	1.4	19.4	12.2	5.4	500
PGSA-1519A*	19.0	1.5	22.7	14.3	5.7	500
PGSA-1822A*	22.0	1.6	25.5	17.6	5.6	500
PGSA-2024A1*	24.0	1.2	27.0	19.5	5.3	500
PGSA-2024A*	24.0	1.6	27.0	19.5	5.3	500
PGSA-2327A*	27.1	1.0	35.1	22.9	6.0	200
PGSA-2529A*	29.0	1.1	35.1	24.5	7.0	200
PGSB-0609A*	9.5	1.7	11.4	6.6	6.5	1000
PGSB-1A*	9.5	3.2	10.7	6.7	9.9	1000
PGSB-2A*	11.1	3.2	12.7	7.9	10.3	1000
PGSB-1013A*	13.0	3.5	14.9	9.0	10.5	500
PGSB-3A*	14.3	3.2	16.3	9.9	10.3	500
466900	15.9	3.2	17.5	11.5	10.3	500
PGSB-1316A*	16.0	3.5	18.0	10.5	10.5	500
PGSB-1216A*	16.5	3.3	18.6	12.3	10.0	500
466901	19.0	3.2	20.2	13.9	10.3	500
PGSB-1519A*	19.0	3.3	20.6	14.5	11.0	500
PGSB-1822A*	22.0	3.5	24.8	17.3	11.5	200
466902	22.2	3.2	23.4	17.7	10.3	500
PGSB-9A*	25.0	3.0	26.4	20.4	10.3	200
PGSB-5A*	27.8	3.2	29.4	22.2	10.3	200
PGSB-6A*	31.8	3.2	34.1	26.6	10.3	200
PGSB-7A*	34.9	3.2	37.3	29.7	10.3	200
PGSB-8A*	38.1	3.2	40.1	31.7	10.7	200

\*UL #E320906

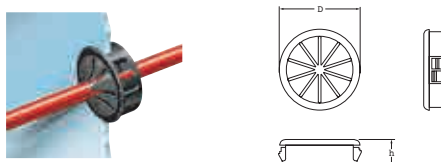


## Universal Bushes

SR 1707

Black Nylon

- Effortless snap-fit into panels
- Protect against rough hole edges
- Ideal for wire, cable and irregular-shaped items



Part Number	Dimensions (mm)					Standard Pack Quantity
	Mounting Hole Dia.	Max Panel Thickness	Max. Cable Bundle	D	h	
PGSD-1*	12.7	1.6	7.9	15.2	6.4	500
PGSD-5*	12.7	3.2	7.9	15.2	9.8	500
466847	12.7	6.4	7.6	15.2	13.8	1000
PGSD-2*	15.9	1.6	11.1	18.5	6.4	500
PGSD-6*	15.9	3.2	11.1	18.5	10.3	500
466848	15.9	6.4	11.1	18.3	14.0	1000
466849	19.0	6.4	12.7	21.4	14.0	1000
PGSD-3*	19.5	1.6	12.7	21.4	6.4	200
PGSD-7*	19.5	3.2	12.7	21.4	9.9	200
22AF0812	20.6	3.2	12.7	22.6	9.9	1000
PGSD-4*	22.2	1.6	14.2	23.8	6.4	200
PGSD-8*	22.2	3.2	14.2	23.8	11.5	200
466850	22.2	6.4	14.3	23.8	14.0	1000
PGSD-9*	25.4	3.2	19.1	27.0	11.5	200
22AF1093	27.8	3.2	20.6	29.3	11.5	1000
466852	27.8	6.4	20.6	29.4	14.0	1000
PGSD-10*	34.9	3.2	25.4	37.8	11.5	100
466853	34.9	6.4	25.4	37.8	14.3	500
PGSD-11*	38.1	3.2	27.0	40.9	11.4	100
466854	38.1	6.4	26.9	40.9	14.3	500

\*UL #E320906



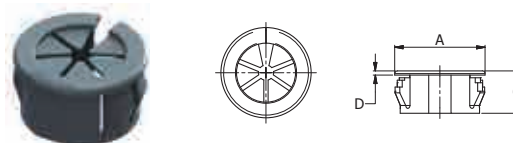
## Open Universal Bushing

SR 1849

PGSC

Black UL94-V2 Nylon 6/6

- Easy to push in design locks into place at common panel thicknesses
- Open design allows bushing to be assembled into holes that already contain a bundle
- Adjust to accept various diameters and shapes



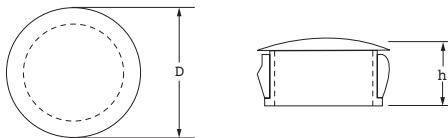
Part Number	Compatible Mounting Hole Range (mm)	Max. Panel Thickness Range (mm)	Maximum Internal Dia. (mm)	Dimensions (mm)			Standard Pack Quantity
				A	C	D	
PGSC-1319A	19.0-19.1	0.8-3.0	12.7	21.8	9.9	1.0	500
PGSC-1422A	22.2-22.4	0.8-3.0	14.3	23.8	11.5	1.0	200
PGSC-1926A	25.4-25.5	0.8-3.0	19.0	27.0	11.5	1.0	200
PGSC-2128A	27.8-28.0	0.8-3.0	20.7	29.5	11.5	1.0	200

## Domed Blanking Plugs

SR 1086

Black or White Nylon – (Heat Stabilised to UL94-V2)

- Snap into panel thicknesses of 1.6 to 3.2mm
- Ideal for closing panel cavities from 4.8 to 51mm in diameter



Part Number		Panel Dimensions (mm)		Part Dimensions (mm)		Standard Pack Quantity
Black	White	Mounting Hole Dia.	Max. Panel Thickness	D	h	
62MP0187	62MP0187W	4.8	1.6	6.4	5.9	1000
PGM-4	-	4.8	1.7	6.0	5.2	1000
460007	462728	6.4	1.6	8.0	8.0	1000
PGM-6	-	6.4	1.7	7.6	5.6	1000
PGM-7	-	7.1	1.6	11.0	7.0	1000
PGM-8	-	7.8	1.6	9.5	6.0	1000
460008	462729	8.0	1.6	9.5	8.0	1000
460009	462730	9.5	3.2	12.0	10.0	1000
PGM-9	-	9.6	1.2	13.0	6.5	1000
PGM-10	-	9.8	1.4	13.0	6.0	1000
460010	462731	11.1	3.2	13.5	10.3	1000
PGM-3	-	11.9	1.6	13.5	6.4	1000
PGM-5	-	12.7	1.6	14.3	6.4	1000
460011	462732	12.7	3.2	14.6	10.3	1000
466855	466871	12.7	6.4	14.7	14.3	1000
PGM-13	-	12.9	2.1	17.0	8.0	1000
PGM-11	-	13.5	1.6	15.1	6.4	500
460012	461285	14.3	3.2	16.7	10.3	1000
PGM-12	-	15.9	1.6	18.2	6.4	500
460013	462733	15.9	3.2	18.2	10.3	1000
466856	-	15.9	6.4	18.2	14.3	1000
PGM-16	-	16.0	2.0	20.0	8.0	500
466867	-	16.0	2.5	18.5	10.3	1000
PGM-28	62MP0687W	17.5	3.2	20.0	10.3	1000
PGM-19	-	19.0	3.2	23.5	10.5	500
62MP0750	62MP0750W	19.0	3.2	23.2	10.3	1000
PGM-14	-	19.1	1.6	21.4	6.4	500
466857	466873	19.1	6.4	23.4	14.3	1000

Part Number		Panel Dimensions (mm)		Part Dimensions (mm)		Standard Pack Quantity
Black	White	Mounting Hole Dia.	Max. Panel Thickness	D	h	
PGM-15	-	19.8	1.6	22.6	6.4	500
466868	-	20.0	2.5	22.6	10.3	1000
460016	462736	20.6	3.2	22.6	10.3	1000
PGM-22	-	22.0	3.0	26.0	9.6	500
PGM-17	-	22.2	1.6	24.6	6.4	500
-	62MP0875W	22.2	3.2	25.8	11.5	1000
PGM-29	-	22.2	3.2	28.6	11.5	200
466858	466874	22.2	6.4	25.8	14.3	1000
466869	466885	25.0	2.5	29.8	11.5	1000
460018	462738	25.4	3.2	30.5	11.5	1000
PGM-25	-	25.5	3.2	28.0	12.7	200
PGM-32	PGM-32WH	27.8	3.2	31.0	11.5	1000
466860	-	27.8-28.6	6.4	30.9	14.3	1000
62MP1187	62MP1187W	30.0	3.2	33.3	11.5	500
466861	466877	30.1	6.4	33.3	14.3	600
PGM-30	-	30.6	3.2	34.0	13.0	200
466862	-	31.7	6.4	34.9	14.3	1000
466870	-	32.0	2.5	35.3	11.5	1000
PGM-18	62MP1250W	32.0	3.2	34.9	11.5	500
466863	466879	34.9	6.4	38.1	14.3	1000
PGM-20	-	35.0	3.2	38.0	11.5	1000
PGM-31	62MP1500W	38.0	3.2	42.7	11.5	250
466864	466880	38.1	6.4	42.4	14.3	1000
466865	466881	44.5	6.4	48.4	14.3	1000
PGM-21	62MP1750W	45.0	3.2	48.4	11.5	500
PGM-23	-	50.8	3.2	55.1	11.9	100
466866	466882	50.8	6.4	55.1	14.3	1000
62MP2000	PGM-27WH	51.0	3.2	55.0	11.5	500

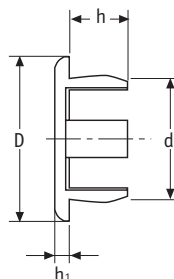
## Sheet Cover Caps

SR 2041

Beige Nylon

- Designed to seal openings in sheet material
- Other colours available online

Part Number	Dimensions (mm)				Panel Thickness Range	Standard Pack Quantity
	D	d1	h	h1		
161004015402	7.0	4.0	6.0	1.1	0.8-3.8	1000
161006015402	10.4	6.0	6.0	1.1	0.8-3.8	1000
161006415402	10.4	6.4	6.0	1.1	0.8-3.8	1000
161008015402	12.0	8.0	6.0	1.2	0.8-3.8	1000
161009515402	13.5	9.5	6.0	1.2	0.8-3.8	1000
161010015402	14.0	10.0	6.0	1.2	0.8-3.8	1000
161012015402	16.0	12.0	6.0	1.3	0.8-3.8	1000
161012715402	17.1	12.7	6.0	1.3	0.8-3.8	500
161014015402	18.7	14.0	6.0	1.4	0.8-3.8	500
161014315402	18.7	14.3	6.0	1.4	0.8-3.8	500
161015915402	20.4	15.9	6.0	1.4	0.8-3.8	500
161018015402	22.8	18.0	6.0	1.5	0.8-3.8	500
161019115402	24.0	19.1	6.0	1.5	0.8-3.8	250
161020015402	24.8	20.0	6.0	1.5	0.8-3.8	250
161022215402	27.4	22.2	6.0	1.6	0.8-3.8	250
161024015402	29.2	24.0	6.0	1.6	0.8-3.8	250
161025415402	30.6	25.4	6.0	1.6	0.8-3.8	250

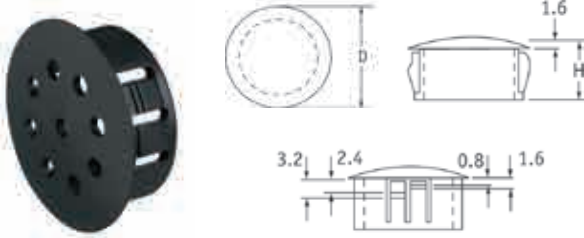


# GROMMETS, STRAIN RELIEF AND BLANKING PLUGS

## Vent Plugs

SR 1708

Black Nylon



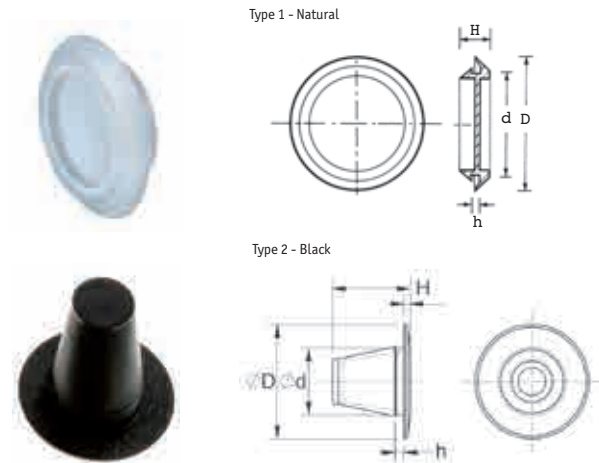
- Provide ventilation access for cooling fans, moving parts and heat-emitting components

Part Number	Panel Dimensions (mm)		Part Dimensions (mm)		Standard Pack Quantity
	Mounting Hole Dia.	Max. Panel Thickness	D	h	
62MP0875V	22.2	3.2	25.8	11.5	1000
110491	25.4	3.2	30.5	11.5	1000

## Snap-Fit Blanking Plugs

SR 1760

LDPE



- Type 1 – Ideal for metal panels up to 2.5mm thick
- Snap neatly into position
- Locks tightly, especially in thin sheet
- For protection and covering purposes

Part Number	Dimensions (mm)				Type	Standard Pack Quantity
	D	d	h	H		
10923	20.0	9.5	3.0	8.5	1	5000
12540	24.0	12.5	3.0	9.8	1	5000
12975	27.0	14.0	3.0	10.0	1	5000
12541	27.5	16.0	3.0	9.8	1	5000
12543	31.5	20.0	3.0	9.8	1	5000
12544	33.5	22.0	3.0	9.8	1	5000
12545	36.5	25.0	3.0	9.8	1	3000
12546	39.5	28.0	3.0	9.8	1	2500
12976	41.0	31.5	3.0	9.2	1	2000
12547	49.5	38.0	3.0	9.8	1	1500
12631	59.0	47.5	3.0	9.8	1	1500
12548	61.5	50.0	3.0	9.8	1	1000
12632	62.5	51.0	3.0	9.5	1	1000
010008022003	15	8	0.5-1.2	12	2	1000
010010022003	17	10	0.5-1.2	12	2	500

## Liquid Tight Plug IP67

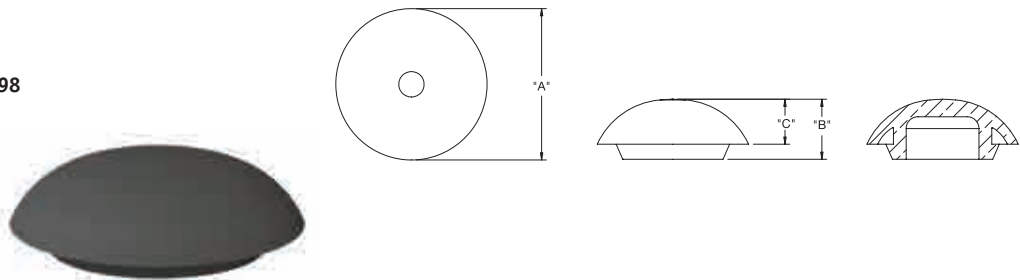
SR 1850

LTP

UL94-V0 Silicone Rubber, RMS-398

Black

- Offers protection to IP67



Part Number	Dimensions (mm)					Standard Pack Quantity
	Mounting Hole Ø	"A"	"B"	"C"	Maximum Panel Thickness	
LTP-4	12.7	23.4	11.4	7.3	3.2	1000
LTP-7	15.88	27.6	11.3	8.1	3.2	500
LTP-5	19.1	29.2	13	8.9	3.2	500
LTP-1	22.23	32	12.7	9.5	3.2	1000
LTP-6	25.4	35.8	14.2	10.1	3.2	200
LTP-2	27.76	39.2	13.7	10.5	3.2	500
LTP-3	34.93	46.2	14.7	11	3.2	200

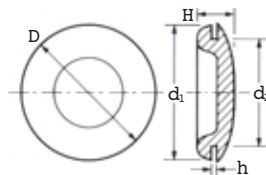
## Blanking Plugs

SR 1750/1751

SR 1750 Black PVC

SR 1751 Black TPR

- Ideal for metal panels
- Acid-resistant
- TPR withstands temperatures between -40°C and 135°C
- PVC withstands temperatures up to 50°C



Part Number		Dimensions (mm)					Standard Pack Quantity
SR1750	SR1751	D	d1	d2	h	H	
PVC	TPR						
10860	15150	9.3	9.3	4.7	1.6	4.6	10000
10825	15151	9.5	9.5	6.4	1.6	5.0	10000
10832	-	14.5	10.6	8.0	0.8	4.0	10000
10233	-	14.5	10.6	8.0	1.6	4.5	10000
10488	-	15.0	12.4	9.5	1.6	6.6	10000
10912	15155	17.7	12.8	11.2	1.6	6.2	10000
10768	-	17.0	15.5	11.5	1.6	7.0	5000
15511	-	17.5	15.9	11.9	1.2	7.1	10000
50680	-	19.0	13.1	12.0	0.8	6.5	10000
10502	15157	18.7	15.5	12.7	1.6	5.6	5000
11321	15158	20.0	18.4	14.9	1.3	7.0	10000
10213	15159	22.0	19.0	15.5	1.6	7.5	5000
1347533	-	19.0	19.0	15.9	1.6	7.1	10000
12914	-	20.0	18.5	16.3	1.3	7.0	5000

Part Number		Dimensions (mm)					Standard Pack Quantity
SR1750	SR1751	D	d1	d2	h	H	
PVC	TPR						
10678	15160	25.0	22.0	19.0	1.6	6.5	5000
10499	15161	25.0	22.0	20.0	1.6	6.5	5000
11152	15162	28.5	26.7	22.2	2.4	8.2	3000
10902	-	28.5	27.0	22.5	1.6	7.5	3000
11027	15164	30.0	27.5	24.5	2.4	8.7	2000
10705	15166	32.0	28.3	25.4	1.6	9.0	3000
11148	15165	32.0	28.3	25.4	2.4	9.0	3000
11323	-	38.5	28.5	25.0	0.8	4.6	3000
11281	15170	38.2	35.4	32.0	3.1	7.15	2000
11239	-	38.2	35.4	31.5	0.8	7.0	2000
11059	15168	38.2	35.4	31.5	1.6	7.5	2000
10877	15171	43.7	43.0	38.2	1.6	8.2	1500
10320	15172	57.5	52.6	51.5	1.6	12.4	500

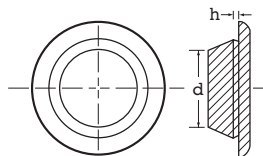
## Body Plugs

SR 1765

Black TPR

- Quick to fit
- Each size covers a range of panel thicknesses
- Withstand temperatures between -40°C and 135°C

Part Number	Dimensions (mm)		Standard Pack Quantity
	Panel Hole Size d	Panel Thickness h	
16230	10.0	0.8-2.0	5000
16231	12.0	0.8-2.0	5000
16232	14.0	0.8-2.0	5000
16233	16.0	0.8-2.0	5000
16234	18.0	0.8-2.0	2500
16235	20.0	0.8-2.0	2500
16236	22.0	0.8-2.0	2500
16237	25.0	0.8-2.0	3000
16238	30.0	0.8-2.0	2000
10517	45.0	0.8-2.0	1000



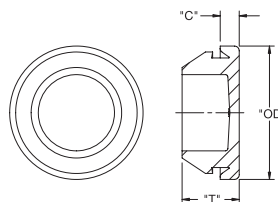
## Body Plugs IP67

SR 1851

BP

Black UL94-HB TPE

- Offers protection to IP67 at maximum panel thickness

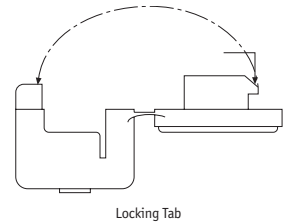
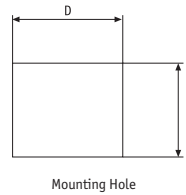


Part Number	Panel Hole Ø Ref.	Panel Thickness	Dimensions (mm)			Material	Standard Pack Quantity
			"OD"	"T"	"C"		
BP-3	22	1.6-3	28	12	4	RMS-168	1000
BP-4	26.5	0.8-2	32.5	12	4	RMS-168	1000

## Self-Lock Strain Relief Bushes

SR 1742

Nylon 6.6 – (Heat Stabilised to UL94-V2)



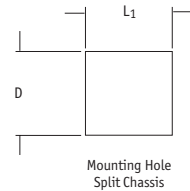
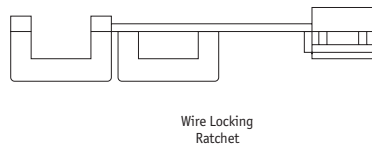
Part Number	UL/CSA Description	Fits Cable		Hole Size (mm)		Maximum Panel Thickness (mm)	Standard Pack Quantity
		Size (mm)	Shape	D	L1		
465701	ST-100N	3.0 x 5.6 - 4.1 x 7.6	Flat	11.5	13.0	2.5	500
465707	ST-201N	7.4 - 9.1	Round	17.5	17.5	4.0	500

## Split Panel Strain Relief Bushes

SR 1744

Nylon 6.6 – (Heat Stabilised to UL94-V2)

- Securely anchors, insulates, and protects cables when mounted onto a split panel
- Protect against the forces of pull, push, or twist and are suitable for round or flat cables

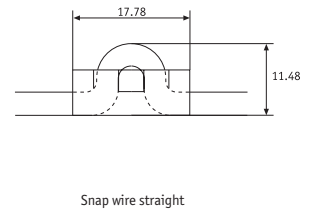
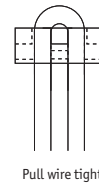
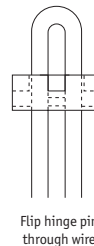
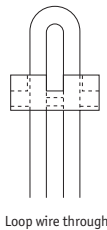


Part Number	Colour	UL/CSA Description	Cable Diameter (mm)	Maximum Panel Thickness (mm)	Hole Size (mm)		Standard Pack Quantity
					D	L1	
465714	Black	SR 8R-200	6.4 - 15.2	2.5	22.2	22.2	500
465715	White	SR 8R-201	6.4 - 15.2	2.5	22.2	22.2	500

## Non-Slip Strain Relief Bushes

SR 1745

Nylon 6.6 – (Heat Stabilised to UL94-V2)

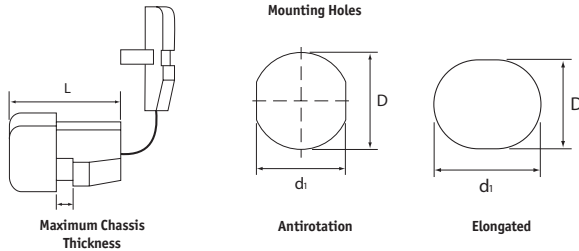


Part Number	Colour	UL/CSA Description	Cable Diameter (mm)	Standard Pack Quantity
465716	Black	ISR-14-27	3.8 x 7.1	1000

## Straight Strain Relief Bushes

SR 1730

Nylon 6.6 – (Heat Stabilised to UL94-V2)



Part Number		Fits Cable		Dimensions (mm)			Maximum Panel Thickness (mm)	Standard Pack Quantity
Black	White	Shape	Size (mm)	D	d1	L		
497648	-	Flat	2.3 x 4.5-2.8 x 5.3	9.5	8.7	10.3	0.5-1.6	100
497651	-	Flat	2.3 x 4.5-2.8 x 5.3	9.5	8.7	10.3	1.8-3.2	100
465718	-	Flat	2.3 x 4.5-2.8 x 5.3	9.5	8.7	10.3	1.6	1000
497646	-	Flat	3.0 x 5.6	11	9.9	10.3	1.9-2.5	100
465724	-	Flat	3.0 x 5.6	11	9.9	10.3	1.2	1000
497653	-	Flat	3.0 x 5.6	11.2	9.9	10.3	1.0-1.6	100
497652	-	Flat	3.0 x 7.1-3.8 x 7.6	12.7	11.8	10.3	0.5-1.6	100
497658	-	Flat	3.0 x 7.1-3.8 x 7.6	12.7	11.8	10.3	1.8-2.5	100
497655	-	Flat	5.0 x 10.4	14.3	12.9	15.2	0.5-1.6	100
497640	-	Flat	5.0 x 10.4	14.3	12.9	15.2	1.8-3.5	100
465722	-	Round	3.0-4.7	9.5	8.4	10.3	1.6	1000
465768	-	Round	7.6	12.7	11.8	11	2.3	500
497641	-	Round	7.6	12.7	11.8	11	1.8-2.3	100
497637	-	Round	6.2-7.4	12.8	11.5	11	0.5-1.6	100
497638	-	Round	6.2-7.4	13	11.5	11	1.8-2.5	100
465782	465783	Round	7.6	15.9	14	14.8	1.6	500
465778	-	Round	7.6	15.9	14	14.8	3.2	500
497644	-	Round	7.4-8.2	15.9	14	14.8	0.5-1.6	100
497643	-	Round	7.4-8.2	15.9	14	14.8	1.9-3.2	100
497642	-	Round	8.2-9.2	15.9	14	14.8	0.5-1.6	100
497645	-	Round	8.2-9.2	15.9	14	14.8	1.9-3.2	100
465774	465775	Round	8.2-9.2	15.9	14	14.8	1.6	500
497647	-	Round	9.2 - 10.5	19.7	17	19	1.9-3.2	100
497657	-	Round	12.0 - 15.2	21.6	21.3	20.6	1.9-3.2	100
465794	-	Round	13.5-15.2	22.2	21.3	20.8	1.6	200
465796	-	Round	13.5-15.2	22.2	21.3	20.8	3.2	200
465790	-	Round	9.4-11	22.2	19.6	19	3.2	200
465792	-	Round	9.4-11	22.2	19.6	19	5.1	200
497654	-	Round	9.2-10.5	28	25.5	25.2	1.0-3.2	100
465746	-	Round	5.6-6.3	12.7-13.1	11.5	11	2.5	500
465750	465751	Round	6.4-7.4	12.7-13.1	11.5	11	1.6	500
465752	465753	Round	6.4-7.4	12.7-13.1	11.5	11	4	500
465744	-	Round	6.5-7.5	12.7-13.1	11.5	11	2.5	500
465780	-	Round	7.6-9.2	15.9-17.4	14	17.1	4	500
465788	465789	Round	9.1-10.9	19.0-19.8	16.8	19	1.6	200
465784	-	Round	9.2-11	19.0-19.8	16.8	19	1.6	200



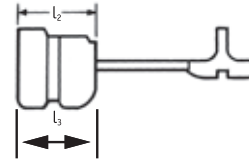
# GROMMETS, STRAIN RELIEF AND BLANKING PLUGS

## Strain Relief Bushes

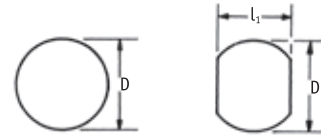
SR 1711

Black Nylon 6.6

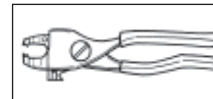
- Eliminate cable strain and wear
- Withstand temperatures up to +85°C
- Crimped onto cable and inserted into hole using tool part number 34811
- For round or elongated holes



Hole shapes



Installation tool



Part Number 34811

Part Number	UL Number	Wires Accommodated	Fits Cable		Dimensions (mm)			Max. Panel Thickness (mm)	Standard Pack Quantity
			Shape	Size (mm)	D	l1	l2		
SRB-D-3	-	SP-1.SPT-1 #18/2	Flat	3 x 5.6	11.1	10.0	10.4	1.6	500
SRB-F-1	E107293	SPT-1	Flat	3 x 5.6	9.5	8.7	10.4	1.6	1000
23MP04N40	-	-	Flat	3 x 7.6	12.7	12.7	11.8	1.6	1000
SRB-F-2	-	SP-1.SPT-1 #18/2	Flat	2.8 x 5.3	9.5	8.8	10.4	1.6	500
SRB-F-2	-	XT (Clockwire) #18/2	-	2.3 x 4.6	-	-	-	-	-
SRB-F-3	E107293	SPT-1	Flat	3 x 5.6	11.0	9.9	10.4	1.6	1000
SRB-F-4	-	SP-2.SPT-2 #16/2.HPN #16/2	Flat	4.1 x 7.6	13.1	11.8	12.7	2.5	500
SRB-F-4	-	SP-2.SPT-2 #18/2.HPN #18/2	-	3.8 x 7.1	12.7	-	-	-	-
SRB-F-5	-	HPN #16/3	Flat	4.1 x 9.4	14.3	13.5	15.2	3.3	500
SRB-F-5	-	SPT-2 #18/3	-	3.8 x 8.6	-	-	-	-	-
SRB-F-5	-	SPT-3 #16/2	-	5.1 x 9.4	-	-	-	-	-
SRB-F-5	-	SPT-3 #18/2	-	4.6 x 8.9	-	-	-	-	-
SRB-F-6	E107293	SPT-1	Flat	3 x 5.6	11.0	9.9	10.4	2.5	1000
SRB-F-7	-	SPT-1 #18/3	-	3 x 7.6	-	-	-	-	-
SRB-F-7	-	HPN #18/2	-	3.8 x 7.1	12.7	11.6	10.2	1.8	500
SRB-F-7	-	HPN #16/2	-	4.1 x 7.6	-	-	-	-	-
SRB-F-8	E107293	SPT-2	Flat	3.71 x 7.6	12.7	11.8	10.4	1.6	1000
SRB-F-8	E107293	-	-	3.8 x 7.6	13.1	-	-	-	-
SRB-F-9	E107293	SPT-2	Flat	3.71 x 7.6	12.7	-	-	2.5	-
SRB-F-9	E107293	-	-	3.8 x 7.6	13.1	-	-	-	-
23MP06N40	-	-	Round	7.2	15.9	15.9	14.0	1.6	500
SRB-R-1	E107293	SVI	Round	6.4	12.7	11.5	10.9	1.6	-
SRB-R-1	E107293	SVT	-	7.4	13.1	-	-	-	-
SRB-R-2	E107293	SVI	Round	6.4	12.7	-	-	2.5	-
SRB-R-2	E107293	SVT	-	7.4	13.1	-	-	-	-
23MP06W10	-	-	Round	7.6	12.7	12.7	11.8	2.3	1000
SRB-R-3	E107293	SJT #18/3	Round	7.6	15.9	14.0	14.8	1.6	500
SRB-R-4	E107293	SJT #18/3	Round	-	-	-	-	3.2	-
SRB-R-5	-	SV.SVT #18/2	Round	6.35	12.7	11.8	10.9	2.5	-
SRB-R-5	-	SV.SVT #18/3	-	6.73	13.1	-	-	-	-
SRB-R-5	-	HPD #16/2	-	7.37	-	-	-	-	-
SRB-R-5	-	HPD #18/2	-	6.86	12.7	-	-	-	-
SRB-R-6	-	SJ.SJT.SJO #16/2	Round	8.26	16.7	14.5	17.3	3.2	-
SRB-R-6	-	SJ.SJT.SJO #18/2	-	7.62	-	-	-	-	-
SRB-R-6	-	SJ.SJT.SJO #16/3	-	9.02	17.5	-	-	-	-
SRB-R-6	-	SJ.SJT.SJO #18/3	-	8.38	-	-	-	-	-
SRB-R-7	E107293	SJT #16/3	Round	8.2-9.2	15.9	14.0	14.8	1.6	-
SRB-R-8	E107293	SJT #16/3	Round	-	-	-	-	3.2	-
SRB-R-9	E107293	SJT #14/3	Round	9.2-10.5	19.0	16.5	19.1	1.6	100
SRB-R-9	E107293	-	-	11	19.8	-	-	-	-
SRB-R-10	E107293	SJT #14/3	Round	9.2-10.5	19.0	-	19.4	3.2	-
SRB-R-10	E107293	-	-	11	19.8	-	-	-	-

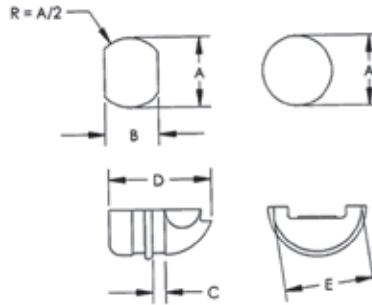
## 'EZ' Strain Relief Bushings

SR E-0009

Black Heat Stabilised PA

UL94- V2

- The 'EZ' bushing has two hinged halves which simply fold over the wire or cable
- Securely anchor, absorb and protect cables and wires from push/pull and twist forces
- No special orientation or alignment is necessary
- Insulates wires from irregular or sharp edges



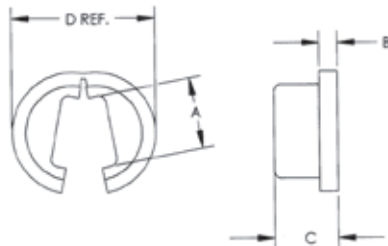
Part Number	Cross Section	Dimensions (mm)							Standard Pack Quantity
		Cable Size	Cable Type	A	B	C	D	E	
23MP04KEZS	Flat	3.8 x 7.1	SPT	12.7	11.8	2.5	14.7	12.9	1000
23MP04NEZS	Flat	3.8 x 7.1	SPT	12.7	11.8	1.6	14.4	12.7	1000
		4.1 x 7.6	SPT	12.7	11.8	1.6	14.4	12.7	
23MP06N34EZ	Round	7.2	SJT	15.9	14.0	1.6	16.6	14.9	1000
		9.0	SJT	15.9	14.0	1.6	16.6	14.9	
		10.2	SJT	15.9	14.0	1.6	16.6	14.9	

## Anti-Twist Bushings

SR E-0010

Black PA 6.6

- Eliminates the electrical cord from twisting inside the lamp
- Has a convenient opening which allows it to slip easily around the cord



Part Number	Dimensions (mm)					Standard Pack Quantity
	Fits Cable	A	B	C	D	
04MP0125ATB	3.175	4.95	1.27	4.44	9.91	1000
04MP0250ATB	6.35	4.95	1.27	4.44	12.7	1000

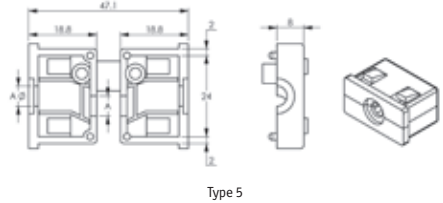
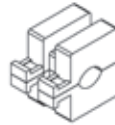
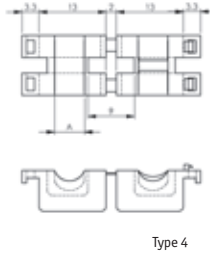
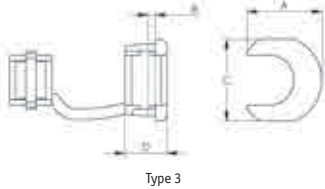
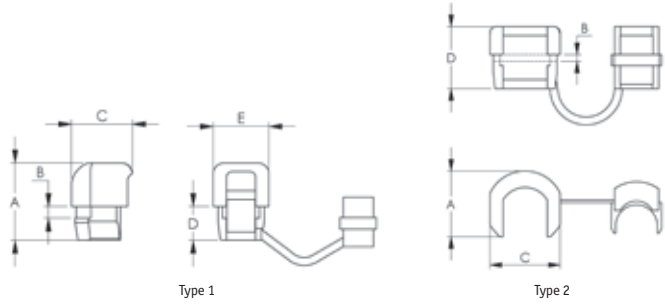
# GROMMETS, STRAIN RELIEF AND BLANKING PLUGS

## Strain Relief Bushes

SR 6280

Black, Nylon 6/6 UL94-V2

- Prevents strain damage to cables and equipment
- Prevents accidental disconnections
- Anchors cable to equipment
- Seals cable entry point



Part Number	Dimensions (mm)					Type	Style	Maximum Panel Thickness	Wire Style	Standard Pack Quantity
	A	B	C	D	E					
XSRBRA01-01	14.8	15.4	4.8	11.1	13.1	1	1	2.5	SV/6 Ø	1000
XSRB18-01	15.1	15.5	3.6	11.3	-	2	2	2.4	SJT/18.2 Ø	1000
XSRB12-01	11.4	11.2	4.8	6.4	-	3	2	1.3	S.P.S/12 Ø	1000
XSRB10-01	14.8	15.4	4.8	11.1	-	1	3	1	SJT/10.5 Ø	1000
XSRB15-01	15.1	15.5	3.6	11.3	-	2	3	2.4	SJT/13.5 Ø	1000

Part Number	Dimensions (mm)		Style	Standard Pack Quantity
	A	Panel Thickness		
XSRBS01-01	5.8	3	4	1000
XSRBS02-01	6	1.2	5	1000
XSRBS03-01	8.5	1.2	5	1000

## Quick Bushing

SR6442

Natural Nylon

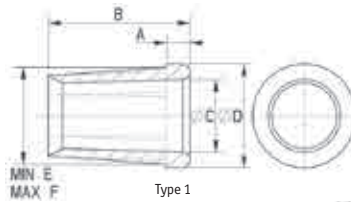
- Full protection of wires in threaded spaces
- Statutory requirement for lighting equipment
- Protects and insulates



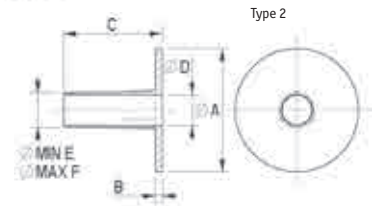
Type 1



Type 2



Type 1



Type 2

Part Number	Dimensions (mm)						Type	Standard Pack Quantity
	A	B	C	D	E	F		
017007000003	2	12	6	8.5	7	8	1	1000
017116000001	16	1.5	20	6	7	8	2	500
017125000001	25	1.5	20	6	7	8	2	500

## Mains Lead Clamp

SR 1852

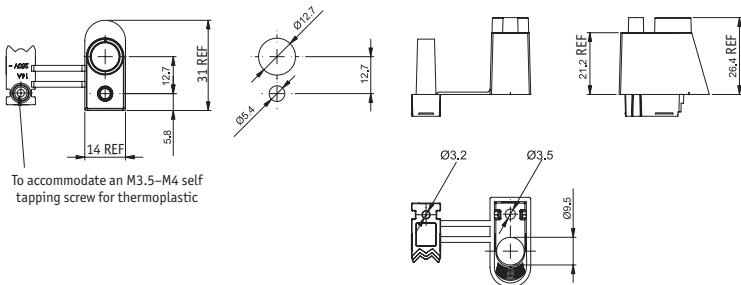
MLC

Black UL94-V2 Nylon 6/6, RMS-01

- Clamp mounts into the chassis to secure the main power cable in appliances
- Clamp provides strain relief to the cable and protects the cable from the metal cutout



Panel Mounting Details



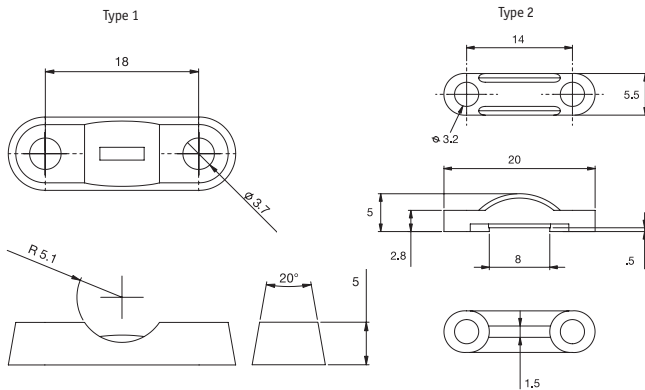
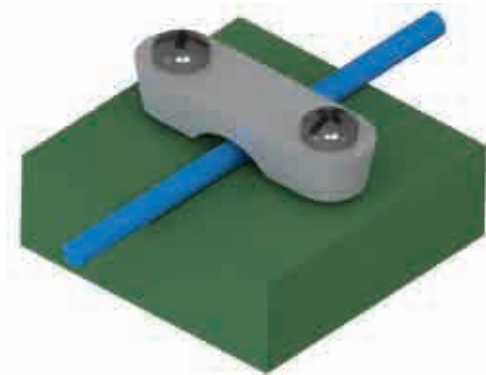
Part Number	Cable Ø Accepted (mm)	Panel Thickness (mm)	Standard Pack Quantity
MLC-1	6.8 – 8.5	0.5 – 2	500

## Strain Relief Clamp

SR 1853

SRCCC

- Clamp mounts into the chassis to secure the main power cable in appliances
- Clamp provides strain relief to the cable and protects the cable from the metal cutout



Part Number	Type	UL94-V2, Nylon 6/6	Colour	Max. Cable Ø (mm)	Mounting Screws	Standard Pack Quantity
SRCC-1	1	RMS-48	Grey	4.5	M3	1000
SRCC-2	2	RMS-01	Black	8	M3	1000

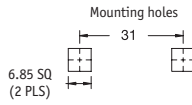
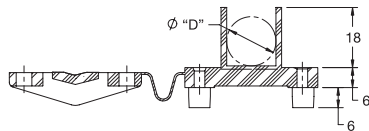
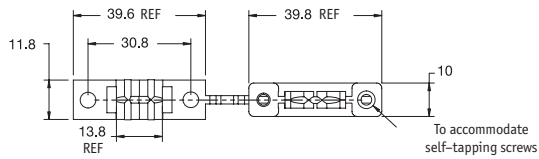
## Hinged Locking Clamp

SR 1854

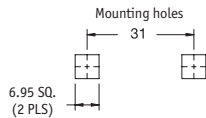
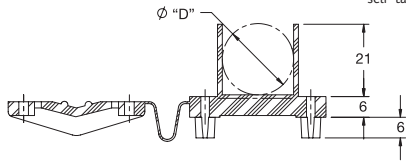
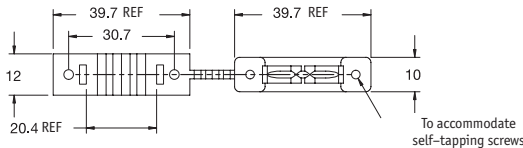
HMCC



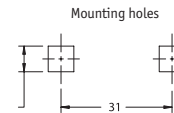
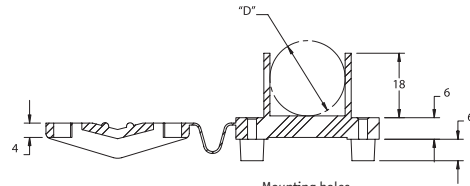
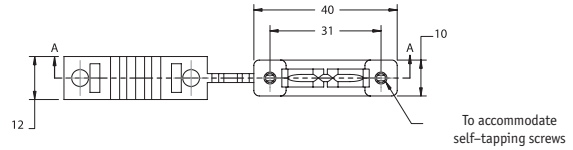
HMCC-1 Type 1



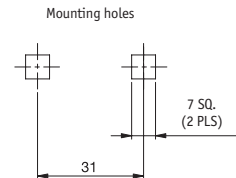
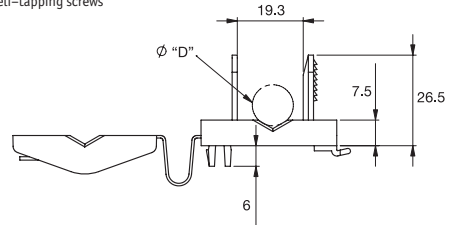
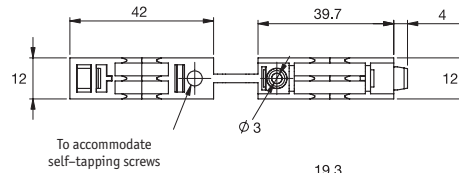
HMCC-3 Type 3



HMCC-2 Type 2



HMCC-4 Type 4



Part Number			Type	"D" Max. Bundle $\phi$ (mm)	Self-Tapping Mounting Screws	Mounting Panel Thickness (mm)	Standard Pack Quantity
Natural UL94-V2 Nylon 6/6, RMS-01	Black UL94-V2 Nylon 6/6, RMS-01	Natural UL94-V0 Nylon 6/6, RMS-19					
HMCC-1-01	HMCC-1-01BK	HMCC-1-19	1	15.1	2x #8	0.6-1.5	500
HMCC-2-01	HMCC-2-01BK	HMCC-2-19	2	16.0	#8	0.6-1.5	1000
HMCC-3-01	HMCC-3-01BK	HMCC-3-19	3	20.9	2x M3.5, M4, #8	0.6-1.5	1000
HMCC-4-01	HMCC-4-01BK	HMCC-4-19	4	12.0	1x M3.5, M4, #8	0.8-1.2	1000

## High Performing Cable Gland – Metric Thread

SR 1855

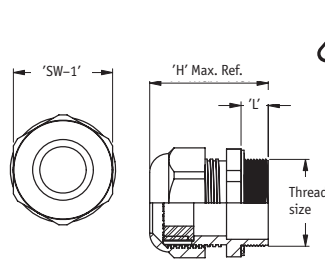
CG-M

Gland Body and Nut: UL94-V2 Nylon 6, RMS-36

Outer Sealing Gland: CR/NBR, RMS-37

Inner Sealing Gland: TPE, RMS-40 Sealing Washer: NBR, RMS-41^

- Protection Class: IP68 – 5 Bar
- Operating temperature: -20°C to 100°C
- Remove the inner sealing gland for larger cable diameters



### Locknuts

Part Number		Dimensions (mm)		Standard Pack Quantity
Grey	Black	SW-1	H	
CGLN-M12	CGLN-M12-BK	17.0	5.0	100
CGLN-M16	CGLN-M16-BK	22.0	5.0	100
CGLN-M20	CGLN-M20-BK	27.0	6.0	100
CGLN-M25	CGLN-M25-BK	32.0	6.0	100
CGLN-M32	CGLN-M32-BK	41.0	7.0	100
CGLN-M40	CGLN-M40-BK	50.0	7.0	50

### Cable Glands

Part Number		Thread Size	Cable Ø Range		Suggested Clearance Hole for Non-Threaded Mounting	"L"	"SW-1"	"H" Max. Ref.	Standard Pack Quantity
Grey	Black		Min. Ø	Max. Ø					
CG-M12-1*	CG-M12-1-BK*	M12	2	5	12.2	8	15	31.0	100
CG-M16-1	CG-M16-1-BK	M16	3	10	16.2	8	20	35.5	100
CG-M20-1	CG-M20-1-BK	M20	5	13	20.2	8	24	36.0	100
CG-M25-1	CG-M25-1-BK	M25	8	17	25.2	8	29	43.0	50
CG-M32-1^	CG-M32-1-BK^	M32	12	21	32.2	10	36	50.0	25
CG-M40-1^	CG-M40-1-BK^	M40	16	28	40.2	10	46	51.0	10

\*CG-M12-1 sold with outer sealing gland only. ^Sealing Washer included with threads M32 and M40.

## High Performing Cable Gland – PG Thread

SR 1860

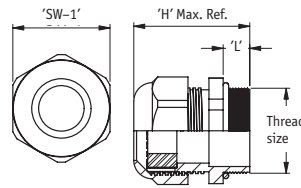
CG-PG

Body and Nut: UL94-V2 Nylon 6, RMS-36

Sealing Gland: CR/NBR, RMS-37

O-Ring: NBR, RMS-41\*

- Protection Class: IP68 – 5 Bar
- Operating temperature: -20°C to 100°C



### Locknuts

Part Number		Dimensions (mm)		Standard Pack Quantity
Grey	Black	SW-1	H	
CGLN-PG7	CGLN-PG7-BK	19.0	5.0	100
CGLN-PG9	CGLN-PG9-BK	22.0	5.0	100
CGLN-PG11	CGLN-PG11-BK	24.0	5.0	100
CGLN-PG13.5	CGLN-PG13.5-BK	27.0	6.0	100
CGLN-PG16	CGLN-PG16-BK	30.0	6.0	100
CGLN-PG21	CGLN-PG21-BK	36.0	7.0	100
CGLN-PG29	CGLN-PG29-BK	46.0	7.0	100
CGLN-PG36	CGLN-PG36-BK	60.0	8.0	50

### Cable Glands

Part Number		Thread Size	Cable Ø Range		Suggested Clearance Hole for Non-Threaded Mounting	"L"	"SW-1"	"H" Max. Ref.	Standard Pack Quantity
Grey	Black		Min. Ø	Max. Ø					
CG-PG7-1	CG-PG7-1-BK	PG7	2	5	12.7	8	15	30.5	100
CG-PG7-2	CG-PG7-2-BK	PG7	3	6.5	12.7	8	15	30.5	100
CG-PG9-1	CG-PG9-1-BK	PG9	2	6	15.4	8	19	34.0	100
CG-PG9-2	CG-PG9-2-BK	PG9	4	8	15.4	8	19	34.0	100
CG-PG11-1	CG-PG11-1-BK	PG11	3	7	18.8	8	22	37.0	100
CG-PG11-2	CG-PG11-2-BK	PG11	5	10	18.8	8	22	37.0	100
CG-PG13.5-1	CG-PG13.5-1-BK	PG13.5	6	12	20.7	9	24	39.0	100
CG-PG16-1	CG-PG16-1-BK	PG16	10	14	22.8	10	27	42.5	50
CG-PG21-1	CG-PG21-1-BK	PG21	9	16	28.6	11	33	47.5	50
CG-PG21-2	CG-PG21-2-BK	PG21	13	18	28.6	11	33	47.5	50
CG-PG29-1*	CG-PG29-1-BK*	PG29	12	20	37.4	11	42	53.0	25
CG-PG36-1*	CG-PG36-1-BK*	PG36	20	26	47.5	13	53	61.0	10
CG-PG36-2*	CG-PG36-2-BK*	PG36	22	32	47.5	13	53	61.0	10

\*O-Ring included with threads PG29 and PG36.

# CABLE GLANDS AND ACCESSORIES

## Nylon Cable Glands

### SR 1704

#### Nylon 6

- Protection rating IP68 (when wed with our accessories)
- Flammability rating: UL94-V2
- Locknut and sealing washers sold separately, available on page 333



### PG Range – Long Mounting Thread

Part Number		Mounting Thread Size	Mounting Thread Length (mm)	Cable Range (mm)	Standard Pack Quantity
Black	Grey				
467202	467222	PG 7	15.0	3.0-6.5	50
467203	467223	PG 7	15.0	2.0-5.0	50
467204	467224	PG 9	15.0	4.0-8.0	50
467205	467225	PG 9	15.0	2.0-6.0	50
467206	467226	PG 11	15.0	5.0-10.0	50
467207	467227	PG 11	15.0	3.0-7.0	50
467208	467228	PG 13.5	15.0	6.0-12.0	50
467209	467229	PG 13.5	15.0	5.0-9.0	50
467212	467232	PG 21	15.0	13.0-18.0	50
467213	467233	PG 21	15.0	9.0-16.0	50
467214	467234	PG 29	18.0	18.0-25.0	25
467215	467235	PG 29	18.0	13.0-20.0	25
467216	467236	PG 36	18.0	22.0-32.0	10
467217	-	PG 36	18.0	20.0-26.0	10
467218	467238	PG 42	18.0	32.0-38.0	10
467220	-	PG 48	18.0	37.0-44.0	10

### Metric Range – Long Mounting Thread

Part Number		Mounting Thread Size	Mounting Thread Length (mm)	Cable Range (mm)	Standard Pack Quantity
Black	Grey				
467302	467324	M12 x 1.5	15.0	3.0-6.5	50
467303	467325	M12 x 1.5	15.0	2.0-5.0	50
467304	467326	M16 x 1.5	15.0	4.0-8.0	50
467305	467327	M16 x 1.5	15.0	2.0-6.0	50
467308	467330	M20 x 1.5	15.0	6.0-12.0	50
467309	467331	M20 x 1.5	15.0	5.0-9.0	50
467314	467336	M25 x 1.5	15.0	13.0-18.0	50
467315	467337	M25 x 1.5	15.0	9.0-16.0	50
467316	467338	M32 x 1.5	15.0	18.0-25.0	25
467317	467339	M32 x 1.5	15.0	13.0-20.0	25
467318	467340	M40 x 1.5	18.0	22.0-32.0	10
467319	-	M40 x 1.5	18.0	20.0-26.0	10
467320	467342	M50 x 1.5	18.0	32.0-38.0	10
467322	467344	M63 x 1.5	18.0	37.0-44.0	10

### NPT Range

Part Number		Mounting Thread Size	Mounting Thread Length (mm)	Cable Range (mm)	Standard Pack Quantity
Black	Grey				
467347	-	3/8" NPT	15.0	2.0-6.0	50
467348	467356	1/2" NPT	13.0	6.0-12.0	50
467349	467357	1/2" NPT	13.0	5.0-9.0	50
467350	467358	3/4" NPT	15.0	13.0-18.0	25
467351	467359	3/4" NPT	15.0	9.0-16.0	25
467352	-	1" NPT	16.0	18.0-25.0	25

### PG Range – Standard Mounting Thread

Part Number		Mounting Thread Size	Mounting Thread Length (mm)	Cable Range (mm)	Standard Pack Quantity
Black	Grey				
467152	467177	PG 7	8.0	3.0 - 6.5	50
467153	467178	PG 7	8.0	2.0 - 5.0	50
467154	467179	PG 9	8.0	4.0 - 8.0	50
467155	467180	PG 9	8.0	2.0 - 6.0	50
467156	467181	PG 11	8.0	5.0 - 10.0	50
467157	467182	PG 11	8.0	3.0 - 7.0	50
467158	467183	PG 13.5	9.0	6.0 - 12.0	50
467159	467184	PG 13.5	9.0	5.0 - 9.0	50
467160	467185	PG 16	10.0	10.0 - 14.0	50
467161	467186	PG 16	10.0	7.0 - 12.0	50
467164	467189	PG 21	10.0	13.0 - 18.0	50
467165	467190	PG 21	10.0	9.0 - 16.0	50
467168	467193	PG 29	12.0	18.0 - 25.0	25
467169	467194	PG 29	12.0	13.0 - 20.0	25
467170	467195	PG 36	14.0	22.0 - 32.0	10
467171	467196	PG 36	14.0	20.0 - 26.0	10
467172	467197	PG 42	14.0	32.0 - 38.0	10

### Metric Range – Standard Mounting Thread

Part Number					Mounting Thread Size	Mounting Thread Length (mm)	Cable Range (mm)	Standard Pack Quantity
Black	Grey	White	Blue	Red				
467242	467272	-	-	-	M12 x 1.5	8.0	3.0 - 6.5	50
467243	467273	-	-	-	M12 x 1.5	8.0	2.0 - 5.0	50
467246	467276	-	-	-	M16 x 1.5	8.0	4.0 - 8.0	50
467247	467277	-	-	-	M16 x 1.5	8.0	2.0 - 6.0	50
467250	467280	467250-W	467250-B	467250-R	M20 x 1.5	9.0	6.0 - 12.0	50
467251	467281	467251-W	467251-B	467251-R	M20 x 1.5	9.0	5.0 - 9.0	50
467256	467286	467256-W	467256-B	467256-R	M25 x 1.5	10.0	13.0 - 18.0	50
467257	467287	467257-W	467257-B	467257-R	M25 x 1.5	10.0	9.0 - 16.0	50
467262	467292	-	-	-	M32 x 1.5	11.0	16.0 - 21.0	25
467263	467293	-	-	-	M32 x 1.5	11.0	13.0 - 18.0	25
467266	467296	-	-	-	M40 x 1.5	14.0	22.0 - 32.0	10
467267	467297	-	-	-	M40 x 1.5	14.0	20.0 - 26.0	10
467268	467298	-	-	-	M50 x 1.5	14.0	32.0 - 38.0	10
467269	467299	-	-	-	M50 x 1.5	14.0	25.0 - 31.0	10
467270	467300	-	-	-	M63 x 1.5	14.0	37.0 - 44.0	10
467271	467301	-	-	-	M63 x 1.5	14.0	29.0 - 35.0	10

## Locknuts and Sealing Washers for Cable Glands

SR 1741/1729

Nylon 6, Brass and Neoprene



Washer for Brass Gland

Washer for Nylon Gland

Brass Locknut

Nylon Locknut

### Nylon/Neoprene

Part Number		Locknut	Dimensions (mm)		Washer	Standard Pack Quantity
Black	Grey	Thread Size	S	h	Part Number	
467585	467741	PG 7	18.0-19.0	5.0	467643	50
467586	467742	PG 9	22.0	5.0	467644	50
467587	467743	PG 11	24.0	5.0	467645	50
467588	467744	PG 13.5	27.0	5.5	467646	50
467589	467745	PG 16	30.0	5.5	467647	50
467591	467746	PG 21	36.0	6.0	467649	50
467593	467747	PG 29	46.0	7.0	467651	25
467594	467748	PG 36	59.0-60.0	8.0	467652	10
467595	467749	PG 42	63.0-65.0	8.0	467653	10
467596	467750	PG 48	69.0-70.0	8.0	467654	10
467598	467752	M12 x 1.5	18.0	5.0	467656	50
467600	467753	M16 x 1.5	22.0	5.0	467658	50
467602	467754	M20 x 1.5	27.0	5.5	467660	50
467605	467755	M25 x 1.5	33.0	6.5	467663	50
467608	467756	M32 x 1.5	39.0-42.0	8.0	467667	25
467610	467757	M40 x 1.5	50.0-52.0	7.0	467669	10
467611	467758	M50 x 1.5	63.0-65.0	8.0	467670	10
467613	467759	M63 x 1.5	75.0	8.0	467671	10
467614	-	3/8" NPT	24.0	5.0	467672	50
467615	467761	1/2" NPT	27.0	7.0	467673	50
467616	467762	3/4" NPT	32.0	7.0	467674	25
467617	467763	1" NPT	40.7	7.0	467675	25

### Brass/Neoprene

Part Number		Locknut	Dimensions (mm)		Corresponding Washer Part Number	Standard Pack Quantity
Black	Grey	Thread Size	S	h		
490711		PG 7	15.0	2.5	467677	25
490712		PG 9	18.0	3.0	467678	25
490713		PG 11	21.0	3.5	467679	25
490714		PG 13.5	22.0	3.5	467680	25
490715		PG 16	24.5	3.5	467681	25
490716		PG 21	32.5	3.5	467682	25
490717		PG 29	41.0	4.0	467683	10
490718		PG 36	51.0	5.0	467684	10
490719		PG 42	60.0	5.0	467685	10
490720		PG48	64.0	5.0	467686	10
490721		M12 x 1.5	14.0	2.5	467687	25
490722		M16 x 1.5	18.0	3.0	467688	25
490723		M20 x 1.5	23.5	3.0	467690	25
490724		M25 x 1.5	29.0	3.5	467692	25
490725		M32 x 1.5	36.0	4.0	467693	10
490726		M40 x 1.5	46.0	4.5	467694	10
490727		M50 x 1.5	55.0	5.0	467695	10
490728		M63 x 1.5	70.0	5.5	467696	10
490729		3/8" NPT	19.5	3.0	467698	25
490730		1/2" NPT	24.0	4.5	467700	25
490731		3/4" NPT	31.5	3.5	467697	10
490732		1" NPT	38.0	4.0	467699	10

## Spiral Cable Glands

SR 1714

Nylon 6

- Locknut and sealing washer available separately



### Metric Range

Part Number		Mounting Thread Size	Mounting Thread Length (mm)	Cable Range (mm)	Standard Pack Quantity
Black	Grey				
467386	467400	M12 x 1.5	8.0	3.0-6.5	50
467388	467402	M16 x 1.5	8.0	4.0-8.0	25
467392	467406	M20 x 1.5	9.0	6.0-12.0	25
467396	467410	M25 x 1.5	10.0	13.0-18.0	10

### NPT Range

Part Number	Colour	Mounting Thread Size	Mounting Thread Length (mm)	Cable Range (mm)	Standard Pack Quantity
467414	Black	3/8" NPT	15.0	4.0-8.0	50
467416	Black	1/2" NPT	13.0	6.0-12.0	50

### PG Range

Part Number		Mounting Thread Size	Mounting Thread Length (mm)	Cable Range (mm)	Standard Pack Quantity
Black	Grey				
467362	467374	PG 7.0	8.0	3.0-6.5	50
467364	467376	PG 9.0	8.0	4.0-8.0	25
467366	467378	PG 11.0	8.0	5.0-10.0	25
467368	467380	PG 13.5	9.0	6.0-12.0	25
467370	467382	PG 16.0	10.0	10.0-14.0	10
467372	467384	PG 21.0	10.0	13.0-18.0	10

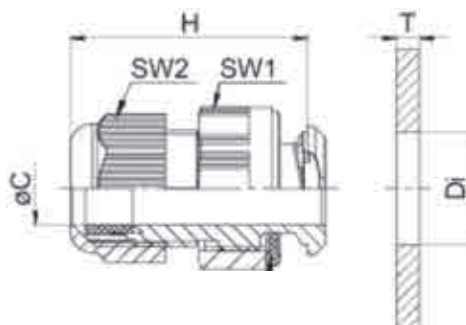


## Easy Fix Cable Gland

SR 1861

Polyamide PA6 V-2

- Quick and easy installation with no inner thread required
- Protection rating IP68 to 5 bar
- Temperature range: -20°C to 100°C



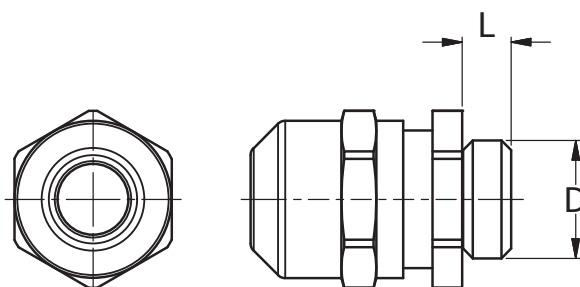
Part Number			Compatible Type	Compatible Hole Ø (mm)	Compatible wall thickness (mm)	Dimensions (mm)				Pack Quantity
Black (RAL 9005)	Light Grey (RAL 7001)	Dark Grey (RAL 7035)				H	C	SW1	SW2	
1334494	1334493	1334492	M16	16.1-16.3	1-4	38.5	5-10	24	20	100
1334497	1334496	1334495	M20	20.1-20.4	1-4	42.5	8-13	26	24	100
1334500	1334499	1334498	M25	25.1-25.4	1-4	48	11-17	32	29	50
1334503	1334502	1334501	M32	32.1-32.4	1-4	58.5	15-21	42	36	50

## Stainless Steel Cable Glands

SR6462

Stainless Steel A2

- Protection class to EN 60 529: IP 68 to 5 bar (30 min)
- Protection class to DIN 40 050-T9: IP 69K
- Temperature range: -40°C to 100°C, interm. Up to approx. 120°C
- Gasket: EPDM



### Metric Range

Part Number	Mounting Thread Size	Mounting Thread Length (mm)	Cable Range (mm)	Standard Pack Quantity
551786	M12 x 1.5	5	3.0-7.0	10
551787	M16 x 1.5	5	4.5-10.0	10
551788	M20 x 1.5	6	6.0-13.0	10
551789	M25 x 1.5	7	9.0-17.0	10
551790	M32 x 1.5	8	13.0-21.0	5
551791	M40 x 1.5	8	16.0-28.0	5
551792	M50 x 1.5	9	21.0-35.0	2
551793	M63 x 1.5	10	34.0-48.0	1

## Brass Cable Glands

SR 1717

### Nickel Plated Brass

- Protection Rating IP68
- Locknut and sealing washer available separately
- Operating temperature range: -20°C to 85°C
- CE approved



### Metric Range

Part Number	Mounting Thread Size	Mounting Thread Length (mm)	Cable Range (mm)	Standard Pack Quantity
490687	M12 x 1.5	6.5	3.0-6.5	25
490688	M12 x 1.5	6.5	2.0-5.0	25
490689	M16 x 1.5	8.0	4.0-8.0	25
490690	M16 x 1.5	8.0	2.0-6.0	25
490691	M20 x 1.5	6.5	6.0-12.0	25
490692	M20 x 1.5	6.5	5.0-9.0	25
490693	M25 x 1.5	8.0	13.0-18.0	25
490694	M25 x 1.5	8.0	9.0-16.0	25
490695	M32 x 1.5	10.0	18.0-25.0	10
490696	M32 x 1.5	10.0	13.0-20.0	10
490697	M40 x 1.5	10.0	22.0-32.0	10
490698	M40 x 1.5	10.0	20.0-26.0	10
490699	M50 x 1.5	13.0	32.0-38.0	10
490700	M50 x 1.5	13.0	25.0-31.0	10
490701	M63 x 1.5	10.5	37.0-44.0	10
490702	M63 x 1.5	10.5	29.0-35.0	10

### NPT Range

Part Number	Mounting Thread Size	Mounting Thread Length (mm)	Cable Range (mm)	Standard Pack Quantity
490703	3/8" NPT	15.0	4.0-8.0	25
490704	3/8" NPT	15.0	2.0-6.0	25
490705	1/2" NPT	13.0	6.0-12.0	25
490706	1/2" NPT	13.0	5.0-9.0	25
490707	3/4" NPT	13.0	13.0-18.0	10
490708	3/4" NPT	13.0	9.0-16.0	10
490709	1" NPT	13.0	18.0-25.0	10
490710	1" NPT	13.0	13.0-20.0	10

### PG Range

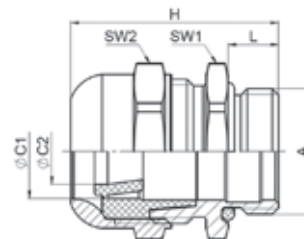
Part Number	Mounting Thread Size	Mounting Thread Length (mm)	Cable Range (mm)	Standard Pack Quantity
490667	PG 7	7.0	3.0-6.5	25
490668	PG 7	7.0	2.0-5.0	25
490669	PG 9	7.0	4.0-8.0	25
490670	PG 9	7.0	2.0-6.0	25
490671	PG 11	7.0	5.0-10.0	25
490673	PG 13.5	7.0	6.0-12.0	25
490674	PG 13.5	7.0	5.0-9.0	25
490675	PG 16	6.5	10.0-14.0	25
490676	PG 16	6.5	7.0-12.0	25
490677	PG 21	8.0	13.0-18.0	25
490678	PG 21	8.0	9.0-16.0	25
490679	PG 29	9.0	18.0-25.0	10
490680	PG 29	9.0	13.0-20.0	10
490681	PG 36	10.5	22.0-32.0	10
490682	PG 36	10.5	20.0-26.0	10
490683	PG 42	11.5	32.0-38.0	10
490684	PG 42	11.5	25.0-31.0	10

## High Performing Brass Cable Glands

SR 1862

### Nickel Plated Brass

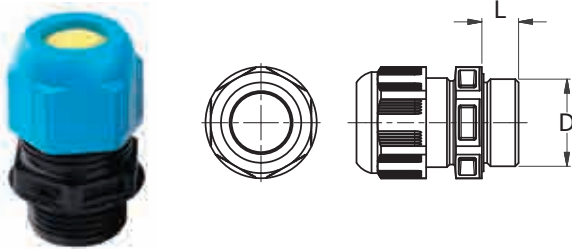
- Sealing insert fulfills UL94HB
- Protection class to EN 62444: IP68 to 10 bar
- Temperature range -40°C to 100°C



Part Number	Compatible Type	Dimensions (mm)							Pack Quantity
		A	C2	C1	L	SW1	SW2	H	
1334484	M12	3 - 8	3 - 5	5 - 8	6.5	16	16	25.5	100
1334485	M16	5 - 10.5	5 - 7.5	7.5 - 10.5	7	20	20	31.5	100
1334486	M20	8 - 15	8 - 10.5	10.5 - 15	8	25	25	33	50
1334487	M25	12.5 - 20.5	12.5 - 15.5	15.5 - 20.5	8	32	32	33.5	50
1334488	M32	17 - 25.5	17 - 20.5	20.5 - 25.5	9	36	36	40.5	25
1334489	M40	24 - 33	24 - 29	29 - 33	9	45	45	43	10
1334490	M50	31 - 42	31 - 37.5	37.5 - 42	10	55	55	47.5	5
1334491	M62	40 - 53	46 - 53	46 - 53	10	70	70	53	5

## ATEX Low Voltage Cable Glands

SR6464  
Polyamide

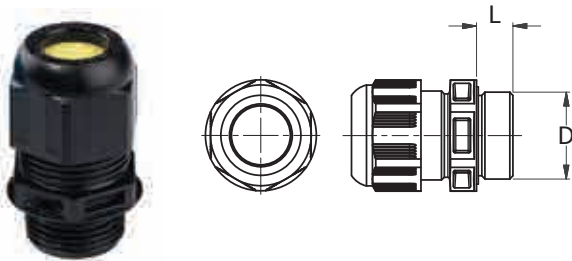


- For Intrinsic Safety
- Explosion protection: II 2 G Ex e II II 2 D Ex tD A21 IP68
- Certification: PTB 05 ATEX 1068 X
- Protection class to EN 60 529: IP68
- Protection class to DIN 40 050-T9: IP 69K
- Flame Protection: Glow wire test 750°C acc. To EN 60695-2-11
- Temperature range: -40°C to 75°C

Part Number	D (mm)	L (mm)	Cable Range (mm)	Standard Pack Quantity
551801	M16 x 1.5	9.0	4.0-9.0	50
551802	M20 x 1.5	10.0	6.0-13.0	50
551803	M25 x 1.5	10.0	7.0-17.0	50
551804	M32 x 1.5	12.0	13.0-21.0	25
551805	M40 x 1.5	12.0	17.0-28.0	10
551806	M50 x 1.5	14.0	23.0-25.0	4
551807	M63 x 1.5	15.0	34.0-48.0	1

## ATEX Cable Glands

SR6463  
Black Polyamide

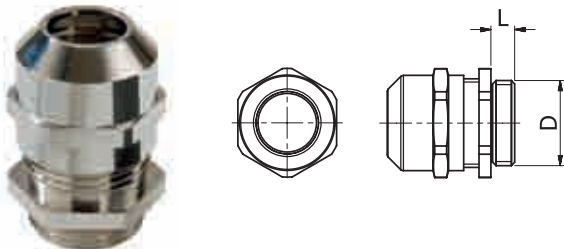


- For Increased Safety
- Explosion protection: II 2 G Ex e II II 2 D Ex tD A21 IP68
- Certification: PTB 05 ATEX 1068 X
- Protection class to EN 60 529: IP68 5bar (30min)
- Protection class to DIN 40 050-T9: IP 69K
- Flame Protection: Glow wire test 750°C acc. To EN 60695-2-11
- Temperature range: -40°C to 75°C

Part Number	D (mm)	L (mm)	Cable Range (mm)	Standard Pack Quantity
551794	M16 x 1.5	9.0	4.0-9.0	50
551795	M20 x 1.5	10.0	6.0-13.0	50
551796	M25 x 1.5	10.0	7.0-17.0	50
551797	M32 x 1.5	12.0	13.0-21.0	30
551798	M40 x 1.5	12.0	17.0-28.0	10
551799	M50 x 1.5	14.0	23.0-25.0	4
551800	M63 x 1.5	15.0	34.0-48.0	1

## ATEX Cable Glands

SR 1763  
Nickel Plated Brass



- Explosion Protection: II 2 G EX e II II 2 D Ex tD A21 IP68
- Certification: PTB 04 ATEX 1112 X
- Protection class to EN 60 529: IP68 to 5 bar (30 min)
- Protection class to DIN 40 050-T9: IP69K
- Temperature Range: -40°C to 75°C

Part Number	D (mm)	L (mm)	Cable Range (mm)	Standard Pack Quantity
495133	M12 x 1.5	5.0	4.0 - 7.0	50
495134	M16 x 1.5	5.0	5.0 - 10.0	50
495135	M20 x 1.5	6.0	6.0 - 13.0	50
495136	M25 x 1.5	7.0	10.0 - 17.0	50
495137	M32 x 1.5	8.0	13.0 - 21.0	25
495138	M40 x 1.5	8.0	16.0 - 28.0	10
495139	M50 x 1.5	9.0	21.0 - 35.0	10
495140	M63 x 1.5	10.0	32.0 - 48.0	10

## Polyamide Reducers

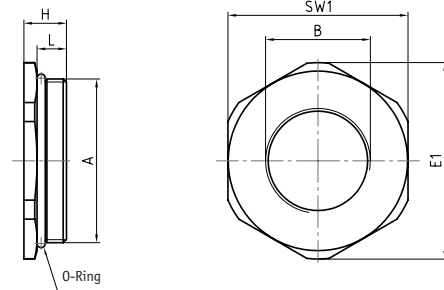
SR 1863

### Polyamide PA6

- Reduce threaded or clearance holes to smaller thread sizes
- Protection grade: dependent on combination with other components
- Temperature range: -40°C to 100°C



Part Number		Dimensions (mm)						Pack Quantity
Black (RAL 9005)	Dark Grey (RAL 7035)	A	B	L	SW1	H		
1335889	1335911	M16 x 1.5	M12 x 1.5	8	24	12	100	
1335890	1335912	M20 x 1.5	M12 x 1.5	8	24	12	100	
1335891	1335913	M20 x 1.5	M16 x 1.5	8	24	12	100	
1335892	1335914	M25 x 1.5	M12 x 1.5	8	29	14	100	
1335893	1335915	M25 x 1.5	M16 x 1.5	8	29	14	100	
1335894	1335916	M25 x 1.5	M20 x 1.5	8	29	14	100	
1335895	1335917	M32 x 1.5	M12 x 1.5	10	36	16	50	
1335896	1335918	M32 x 1.5	M16 x 1.5	10	36	16	50	
1335897	1335919	M32 x 1.5	M20 x 1.5	10	36	16	50	
1335898	1335920	M32 x 1.5	M25 x 1.5	10	36	16	50	
1335899	1335921	M40 x 1.5	M16 x 1.5	10	46	16	50	
1335900	1335922	M40 x 1.5	M20 x 1.5	10	46	16	50	
1335901	1335923	M40 x 1.5	M25 x 1.5	10	46	16	50	
1335902	1335924	M40 x 1.5	M32 x 1.5	10	46	16	50	
1335903	1335925	M50 x 1.5	M20 x 1.5	12	55	18	25	
1335904	1335926	M50 x 1.5	M25 x 1.5	12	55	18	25	
1335905	1335927	M50 x 1.5	M32 x 1.5	12	55	18	25	
1335906	1335928	M50 x 1.5	M40 x 1.5	12	55	18	25	
1335907	1335929	M63 x 1.5	M25 x 1.5	12	68	18	25	
1335908	1335930	M63 x 1.5	M32 x 1.5	12	68	18	25	
1335909	1335931	M63 x 1.5	M40 x 1.5	12	68	18	25	
1335910	1335932	M63 x 1.5	M50 x 1.5	12	68	18	25	



## Brass Reducers

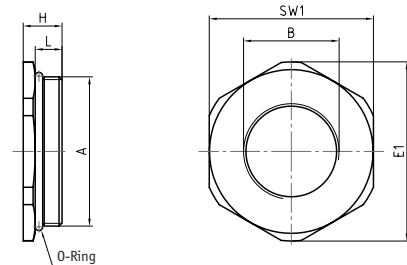
SR 1864

### Nickel-plated Brass

- Reduce threaded or clearance holes to smaller thread sizes
- Protection grade: Max IP68 dependent on combination with other components
- Temperature range: -40°C to 100°C



Part Number	Dimensions (mm)						Pack Quantity
	A	B	L	SW1	H		
1335872	M16 x 1.5	M12 x 1.5	8	24	12	100	
1335873	M20 x 1.5	M12 x 1.5	8	24	12	100	
1335874	M20 x 1.5	M16 x 1.5	8	24	12	100	
1335875	M25 x 1.5	M16 x 1.5	8	29	14	100	
1335876	M25 x 1.5	M20 x 1.5	8	29	14	100	
1335877	M32 x 1.5	M16 x 1.5	10	36	16	50	
1335878	M32 x 1.5	M20 x 1.5	10	36	16	50	
1335879	M32 x 1.5	M25 x 1.5	10	36	16	50	
1335880	M40 x 1.5	M20 x 1.5	10	46	16	25	
1335881	M40 x 1.5	M25 x 1.5	10	46	16	25	
1335882	M40 x 1.5	M32 x 1.5	10	46	16	25	
1335883	M50 x 1.5	M25 x 1.5	12	55	18	10	
1335884	M50 x 1.5	M32 x 1.5	12	55	18	10	
1335885	M50 x 1.5	M40 x 1.5	12	55	18	10	
1335886	M63 x 1.5	M32 x 1.5	12	68	18	10	
1335887	M63 x 1.5	M40 x 1.5	12	68	18	10	
1335888	M63 x 1.5	M50 x 1.5	12	68	18	10	



# FAN ACCESSORIES

Fan accessories provide protection and mounting for small DC and AC fans suitable for industrial and computing applications. Fan Guards prevent debris falling into the fan blades and accidental obstruction. They are ideal for the cooling of electronic applications with a protection solution.



## FAN GUARDS

Pages 356



## METAL FRAME FILTER

Pages 359

Call 0845 758 5070

[www.essentracomponents.co.uk](http://www.essentracomponents.co.uk)

## Multi Slot Cable Glands

SR 6264

Polyamide, EPDM

- Multiple cable slots
- Moulded sealing washer
- Protection class to EN 60 529: IP 68 to 5 bar (30 min)
- Temperature Range -40°C to 100°C

### Item A

Cable Gland Body Polyamide

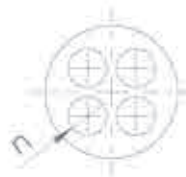
Part Number	Dimensions (mm)					Standard Pack Quantity
	D	Colour	L	TL	Cable Dia.	
550911	M12 x 1.5	Grey RAL7035	9	29-34	3-7	50
550917	M16 x 1.5	Grey RAL7035	9	31-37	4.5-10	50
550923	M20 x 1.5	Grey RAL7035	10	36-45	6-13	50
550930	M25 x 1.5	Grey RAL7035	10	38-47	9-17	50
550937	M32 x 1.5	Grey RAL7035	10	42-51	13-21	25
550943	M40 x 1.5	Grey RAL7035	12	52-65	16-28	10
550912	M12 x 1.5	Black RAL9005	9	29-34	3-7	50
550918	M16 x 1.5	Black RAL9005	9	31-37	4.5-10	50
550924	M20 x 1.5	Black RAL9005	10	36-45	6-13	50
550931	M25 x 1.5	Black RAL9005	10	38-47	9-17	50
550938	M32 x 1.5	Black RAL9005	10	42-51	13-21	25
550944	M40 x 1.5	Black RAL9005	12	52-65	16-28	5



### Item B

Slotted Sealing Insert

Part Number	Dimensions (mm)			Standard Pack Quantity
	D	No. of Conductors	Cable Diameter	
550915	M12 x 1.5	2	1-2	10
550916	M12 x 1.5	4	0.5-2	10
550921	M16 x 1.5	2	2-4	10
550922	M16 x 1.5	3	1-2.1	10
550927	M20 x 1.5	2	4-6	10
550928	M20 x 1.5	3	2.5-4	10
550934	M25 x 1.5	2	5-7	10
550935	M25 x 1.5	3	5-7	10
550936	M25 x 1.5	4	4-6	10
550941	M32 x 1.5	3	6-8	10
550942	M32 x 1.5	4	5-7	10
550947	M40 x 1.5	4	8-10	10



### Item C

Lock Nut Polyamide

Part Number	Dimensions (mm)			Standard Pack Quantity
	D	Colour	TL	
550913	M12 x 1.5	Grey RAL7035	5	50
550919	M16 x 1.5	Grey RAL7035	5	50
550925	M20 x 1.5	Grey RAL7035	5	50
550932	M25 x 1.5	Grey RAL7035	5	50
550939	M32 x 1.5	Grey RAL7035	6	25
550945	M40 x 1.5	Grey RAL7035	6	10
550914	M12 x 1.5	Black RAL9005	5	50
550920	M16 x 1.5	Black RAL9005	5	50
550926	M20 x 1.5	Black RAL9005	5	50
550933	M25 x 1.5	Black RAL9005	5	50
550940	M32 x 1.5	Black RAL9005	6	25
550946	M40 x 1.5	Black RAL9005	6	10



Not sold separately

Complete Assembly - Item A + Item B + Item C

# CABLE GLANDS AND ACCESSORIES

## EMC Cable Glands

SR 6266

Nickel Plated Brass



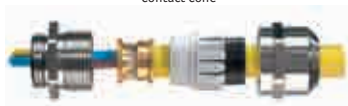
Basic Gland



Advanced Gland Body



Contact Cone



Flat Lock Nut - Type 1



Spiked Lock Nut - Type 2

- Metric Threads
- Specially constructed to terminate shielded cables to maintain screening
- Protection class to EN 60 529: IP 68 to 5 bar (30 min)
- Temperature Range -20°C to 100°C
- Reduces radiated EMI noise from equipment
- Available in basic and advanced versions
- Lock Nut sold separately

### Basic EMC Gland-Contact Fingers: Type 1

Part Number	Dimensions (mm)					Standard Pack Quantity
	Cable Range	D - Thread Type	L - Overall Length	TL - Thread Length	SW - Width Across Flats	
34002803E	3-6.5	M12 x 1.5	28	6	14	50
34002804E	4-8	M16 x 1.5	30	7	18	50
34002805E	6-12	M20 x 1.5	33	8	22	50
34002806E	10-14	M25 x 1.5	36	8	27	25
34002807E	13-18	M32 x 1.5	42	9	34	25
34002808E	18-25	M40 x 1.5	48	9	43	20
34002809E	3-6.5	M12 x 1.5	33.8	12	14	50
34002810E	4-8	M16 x 1.5	34.6	12	18	50
34002811E	6-12	M20 x 1.5	36.5	12	22	50
34002812E	10-14	M25 x 1.5	39.5	12	27	25
34002813E	13-18	M32 x 1.5	48	15	34	25
34002814E	18-25	M40 x 1.5	54	15	43	20

### Advanced EMC Gland- Contact Cone: Type 2

Part Number	Dimensions (mm)					Standard Pack Quantity
	Cable Range	D- Thread Type	L- Overall Length	TL- Thread Length	SW - Width Across Flats	
551239	3-7	M12 x 1.5	30	5	16	50
551240	4.5-10	M16 x 1.5	34	6	20	50
551241	6-13	M20 x 1.5	37	6	24	50
551242	9-17	M25 x 1.5	42	7	29	50
551243	13-21	M32 x 1.5	44	8	36	25
551244	16-28	M40 x 1.5	55	8	46	10

### Lock Nuts

Part Number	Dimensions (mm)			Type	Standard Pack Quantity
	D- Thread Type	SW - Width Across Flats	TL- Thread Length		
551227	M12 x 1.5	15	2.8	1	50
551228	M16 x 1.5	19	2.8	1	50
551229	M20 x 1.5	24	3	1	50
551230	M25 x 1.5	30	3.5	1	50
551231	M32 x 1.5	36	4	1	25
551232	M40 x 1.5	46	5	1	10
551233	M12 x 1.5	15	4.7	2	50
551234	M16 x 1.5	19	4.7	2	50
551235	M20 x 1.5	24	4.7	2	50
551236	M25 x 1.5	30	5.2	2	50
551237	M32 x 1.5	36	5.7	2	25
551238	M40 x 1.5	46	6.5	2	10

## Vent Plugs

### SR6260

#### Polyamide PA 6-V2, Acrylic Co -Polymer, Nitrile Rubber

- Allows air pass through the vent but blocks moisture and dust
- Prevents pressure build up within enclosures
- Prevents seal failures or access problems due to pressure differentials
- Available in three different permeabilities



Fig 1



Fig 2



Fig 3



Fig 6



Fig 7



Fig 8

Part Number			Mounting Style	Dimensions (mm)						Figure	Standard Pack Quantity
Grey RAL 7001	Grey RAL 7035	Black RAL 9005		Hole Ø	Permeability at 70mBar Ltr/Hr	TL	TD	H	D		
34002733E	34002740E	34002747E	Short Thread	M12X1.5	25	6	12	7.5	17	1	100
34002734E	34002741E	34002748E	Long Thread	M12X1.5	25	10	12	7.5	17	1	100
34002735E	34002742E	34002749E	Snap In	Snap Fit	25	7.5	5.5	9.2	17	2	100
34002736E	34002743E	34002750E	Short Thread	M12X1.5	120	10	12	12.5	24	6	100
34002737E	34002744E	34002751E	Short Thread	M16X1.5	120	10	16	12.5	24	6	100
34002738E	34002745E	34002752E	Short Thread	M20X1.5	120	10	20	12.5	24	6	100
34002754E	34002761E	34002768E	Short Thread	M12X1.5	120	6	12	7.5	17	1	100
-	34002762E	34002769E	Long Thread	M12X1.5	120	10	12	7.5	17	1	100
34002756E	34002763E	34002770E	Snap In	Snap Fit	120	7.5	5.5	9.2	17	2	100
34002757E	34002764E	34002771E	Short Thread	M12X1.5	450	10	12	12.5	24	6	100
34002758E	34002765E	34002772E	Short Thread	M16X1.5	450	10	16	12.5	24	6	100
34002759E	34002766E	34002773E	Short Thread	M20X1.5	450	10	20	12.5	24	6	100
34002760E	34002767E	34002774E	Long Thread	M40X1.5	1350	18	40	19	60	7	100
34002775E	34002782E	34002789E	Short Thread	M12X1.5	300	6	12	7.5	17	1	100
34002776E	34002783E	34002790E	Long Thread	M12X1.5	300	10	12	7.5	17	1	100
34002777E	34002784E	34002791E	Snap In	Snap Fit	300	7.5	5.5	9.2	17	2	100
34002778E	34002785E	34002792E	Short Thread	M12X1.5	750	10	12	12.5	24	6	100
34002779E	34002786E	34002793E	Short Thread	M16X1.5	750	10	12	12.5	24	6	100
34002780E	34002787E	34002794E	Short Thread	M20X1.5	750	10	20	12.5	24	6	100

#### Stainless Steel, Acrylic Co -Polymer

Part Number	Mounting Style	Dimensions (mm)						Figure	Standard Pack Quantity
		Hole Ø	Permeability at 70mBar Ltr/Hr	TD	TL	H	D		
34002796E	Low Profile	M4 X 0.7	35	4	3.1	2.7	12.3	8	100
34002797E	Long Thread	M12 x 1.5	25	12	10	11	17	3	100
34002798E	Short Thread	M12 x 1.5	25	12	6	15.2	17	3	100
34002799E	Short Thread	M16 x 1.5	25	16	6	12.4	17	3	100
34002800E	Long Thread	M16 x 1.5	25	16	6	16.5	17	3	100
34002801E	Short Thread	M20 x 1.5	120	20	6	13.5	17	3	100
34002802E	Long Thread	M20 x 1.5	120	20	6	17	17	3	100



# CABLE GLANDS AND ACCESSORIES

## Polyamide Venting Element

SR 1866

Polyamide PA6 V-0

- Protection for electronic enclosures against condensation, water and pressure
- Protection grade: IP68 0.6 bar
- Temperature range -40°C to 100°C



Part Number		Dimensions (mm)				Standard Pack Quantity
Black	Grey	A	L	SW1	H	
-	1334475	M12 x 1.5	6	17	13.8	100
1334474	1334473	M12 x 1.5	10	17	17.8	100
1334477	1334476	M20 x 1.5	10	27	21.6	10
1334479	1334478	M40 x 1.5	18	50	35.6	5

## Stainless Steel Venting Element

SR 1868

Stainless Steel 303

- Protection for electronic enclosures against condensation, water and pressure
- Protection grade: IP68 0.6 bar
- Temperature range -40°C to 100°C



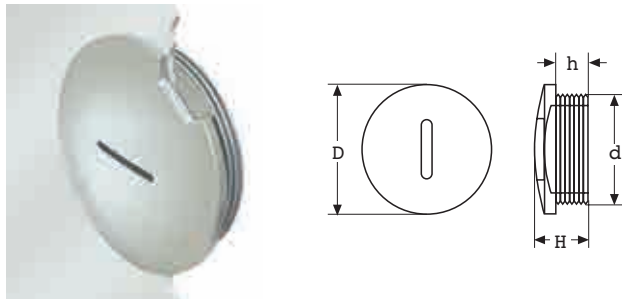
Part Number	Dimensions (mm)				Standard Pack Quantity
	A	L	SW1	H	
1334480	M12 x 1.5	6	17	13	25
1334481	M20 x 1.5	6	26	13	10
1334482	M40 x 1.5	8	45	18	5

## Cable Gland Covers

SR 1782

Grey Nylon 6.6 and Brass

- To block entry holes for cable glands when not in use



Nylon PG Thread Range

Part Number		Dimensions (mm)				Standard Pack Quantity
Black	Grey	d	D	H	h	
467427	467437	PG 7	15.0	12.5	8.5	50
467428	467438	PG 9	19.0	13.0	8.5	50
467429	467439	PG 11	22.0	13.0	9.0	50
467430	467440	PG 13.5	25.0	13.0	9.0	50
467431	467441	PG 16	27.0	15.0	10.5	50
467432	467442	PG 21	33.0	13.5	8.5	50
467433	467443	PG 29	44.0	16.0	11.5	25
467434	467444	PG 36	55.0	18.0	13.5	25
467435	-	PG 42	62.0	18.5	13.5	25
467436	467446	PG 48	68.0	19.5	14.5	25

Nylon Metric Thread Range

Part Number		Dimensions (mm)				Standard Pack Quantity
Black	Grey	d	D	H	h	
467447	467458	M12 x 1.5	15.0	12.5	8.5	50
467448	467459	M16 x 1.5	19.0	13.0	8.5	50
467450	467461	M20 x 1.5	25.0	13.0	9.0	50
467452	467463	M25 x 1.5	30.0	15.5	10.5	50
467454	467465	M32 x 1.5	38.0	16.0	10.5	25
467455	467466	M40 x 1.5	46.0	16.0	11.5	25
467456	467467	M50 x 1.5	56.0	18.0	13.5	25
467457	467468	M63 x 1.5	68.0	19.0	14.0	25

Brass PG Thread Range

Part Number	Dimensions (mm)				Standard Pack Quantity
	d	D	H	h	
490649	PG 7	14.0	8.0	5.5	50
490650	PG 9	17.0	9.0	6.0	50
490651	PG 11	20.0	9.0	6.0	50
490655	PG 29	39.5	13.0	7.5	25
490657	PG 42	55.5	16.0	9.5	25
490658	PG 48	64.5	17.5	9.5	25

Brass Metric Thread Range

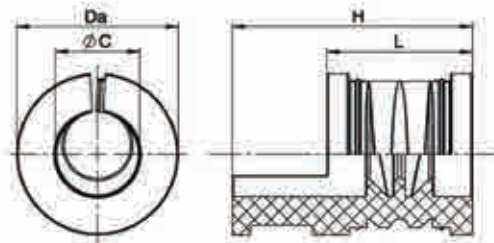
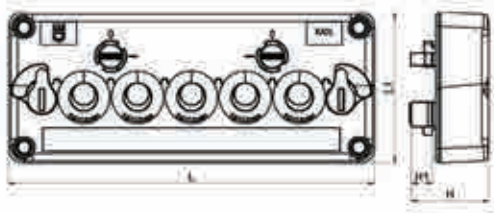
Part Number	Dimensions (mm)				Standard Pack Quantity
	d	D	H	h	
490659	M12 x 1.5	14.0	7.0	5.0	50
490660	M16 x 1.5	18.0	8.0	6.0	50
490661	M20 x 1.5	22.0	8.0	6.5	50
490662	M25 x 1.5	27.0	10.0	7.0	50
490663	M32 x 1.5	34.0	11.0	8.0	25
490664	M40 x 1.5	44.0	13.0	5.0	25
490665	M50 x 1.5	54.0	19.5	10.5	25
490666	M63 x 1.5	67.0	15.0	10.5	25

## Cable Entry System

SR 1869

Polyamide PA6 V-0

- Tool-free entry and connecting technology for machines and equipment
- Order plate and accompanying grommet
- Protection grade: IP65
- Temperature range -30°C to 100°C



### Plate only

Part Number	Dimensions (mm)					Grommet Holes	Pack Quantity
	Hole size	L	L1	H	H1		
1334527	125 x 35	153	63	32.3	8.9	5	1
1334528	125 x 57.5	153	85.5	32.3	8.9	10	1
1334529	125 x 80	153	108	32.3	8.9	15	1
1334530	125 x 102.5	153	130.5	32.3	8.9	12	1
1334531	125 x 125	153	153	32.3	8.9	25	1

### Grommet – TPE TPV

Part Number	Dimensions (mm)				Pack Quantity
	C	L	H	Da	
1334532	3 - 5	20	33	22.2	10
1334533	5 - 7	20	33	22.2	10
1334534	7 - 9	20	33	22.2	10
1334535	9 - 11	20	33	22.2	10
1334536	11 - 13	20	33	22.2	10
1334537	13 - 15	20	33	22.2	10
1334538	15 - 16	20	33	22.2	10
1334539*	-	20	-	22.2	10

\*Closed (without slot and bore)

## Cable Entry Plate

SR 1870

Polyamide PA6 V-0



- Tool-free connecting technology for cabling of machines and equipment
- Variety of grommet variations for a wide range of cable requirements
- Protection class: IP66
- Temperature range -30°C to 100°C



Part Number	Number of entries on the cable entry plate suitable for cable diameter (mm)											Pack Quantity
	1.5 - 2.6	2.5 - 5.0	3.0 - 5.5	3.0 - 6.5	4.1 - 8.1	5.0 - 9.2	8.0 - 12.0	8.0 - 12.5	9.0 - 14.0	9.6 - 15.9	14.0 - 20.0	
1334517	-	-	-	4	-	4	-	-	-	-	3	1
1334518	-	-	-	-	-	-	12	-	-	-	-	1
1334519	-	-	2	-	6	-	-	-	4	-	1	1
1334520	-	-	-	6	-	4	-	-	-	4	-	1
1334521	-	-	-	-	-	17	-	-	-	-	-	1
1334522	-	-	-	11	1	-	-	5	-	-	-	1
1334523	-	-	-	16	-	4	-	2	-	-	-	1
1334524	-	-	-	-	23	-	-	-	-	-	-	1
1334525	-	-	-	29	-	-	-	-	-	-	-	1
1334526	-	-	-	-	-	-	-	-	-	-	-	1

# YOUR JOB MADE EASIER:

- **FREE SAMPLES** – try before you buy
- **SMALL PACKS** – available in the quantities you need
- **RELIABLE DELIVERY** – same day shipping from stock
- **OUTSTANDING CUSTOMER SERVICE** – expert advice

Call **0845 758 5070**

[www.essentracomponents.co.uk](http://www.essentracomponents.co.uk)



**OVER  
30,000  
PRODUCTS  
ONLINE**

# VISIT US **ONLINE!**

- Buy online
- Request free samples
- Easy to find products
- Download 3D CAD files

**[www.essentracomponents.co.uk](http://www.essentracomponents.co.uk)**

Conditions of sale can be found on our website • [www.essentracomponents.co.uk](http://www.essentracomponents.co.uk)

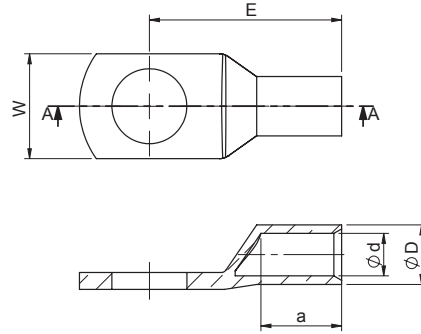
## Tubular Ring Terminals

SR E-0000

Copper – Tin Plated



- Made from tubular copper tin plated
- Uninsulated and ideal for crimping
- Tubular terminals with flat surface end, enables easy and precise contact
- Tin plated – reduces the risk of corrosion



Part Number	Dimensions (mm)					Cross Section (mm <sup>2</sup> )	Screw Hole Size	Standard Pack Quantity
	d	D	a	E	W			
1442968	1.3	2.8	5.8	12.0	6.0	0.75	M3	100
1442969	1.3	2.8	5.8	13.0	6.5	0.75	M4	100
1442970	1.3	2.8	5.8	14.0	7.5	0.75	M5	100
1442971	1.8	3.3	5.8	12.0	6.5	1.5	M3	100
1442972	1.8	3.3	5.8	13.0	6.5	1.5	M4	100
1442973	1.8	3.3	5.8	14.0	7.5	1.5	M5	100
1442974	1.8	3.3	5.8	16.0	9.0	1.5	M6	100
1442975	2.3	4.2	5.8	12.0	7.5	2.5	M3	100
1442976	2.3	4.2	5.8	13.0	7.5	2.5	M4	100
1442977	2.3	4.2	5.8	14.0	8.5	2.5	M5	100
1442978	2.3	4.2	5.8	16.0	9.5	2.5	M6	100
1442980	3.0	5.0	7.8	18.0	8.5	4.0	M4	100
1442981	3.0	5.0	7.8	18.0	9.0	4.0	M5	100
1442982	3.0	5.0	7.8	19.0	10.0	4.0	M6	100
1442983	3.0	5.0	7.8	22.0	13.0	4.0	M8	100
1442984	4.0	6.0	8.7	18.0	9.5	6.0	M4	100
1442985	4.0	6.0	8.7	19.0	9.5	6.0	M5	100
1442986	4.0	6.0	8.7	19.0	10.0	6.0	M6	100
1442987	4.0	6.0	8.7	22.0	14.0	6.0	M8	100
1442989	4.0	6.0	8.7	25.0	19.0	6.0	M12	100
1442990	4.5	7.0	10.0	21.0	12.0	10.0	M5	100
1442991	4.5	7.0	10.0	21.5	12.0	10.0	M6	100
1442992	4.5	7.0	10.0	23.5	15.0	10.0	M8	100
1442993	4.5	7.0	10.0	25.5	17.0	10.0	M10	100
1442995	5.5	8.5	13.0	25.0	12.0	16.0	M5	100
1442996	5.5	8.5	13.0	25.5	12.0	16.0	M6	100
1442997	5.5	8.5	13.0	27.5	15.0	16.0	M8	100
1442998	5.5	8.5	13.0	29.5	17.0	16.0	M10	100
1443000	7.0	10.0	15.0	28.0	14.0	25.0	M5	100
1443001	7.0	10.0	15.0	28.5	14.0	25.0	M6	100
1443002	7.0	10.0	15.0	30.5	16.0	25.0	M8	100
1443003	7.0	10.0	15.0	32.5	18.0	25.0	M10	100
1443004	7.0	10.0	15.0	33.5	19.0	25.0	M12	100
1443006	8.5	12.0	17.0	31.5	18.0	35.0	M5	100
1443007	8.5	12.0	17.0	31.5	18.0	35.0	M6	100
1443008	8.5	12.0	17.0	33.5	18.0	35.0	M8	100
1443009	8.5	12.0	17.0	35.5	18.0	35.0	M10	100
1443010	8.5	12.0	17.0	36.5	20.0	35.0	M12	100

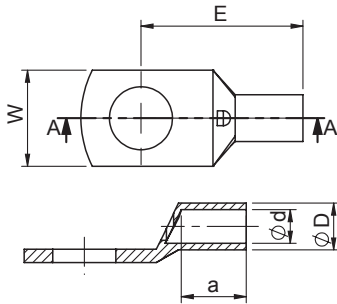
## Tubular Terminals with Inspection Hole

SR E-0001

Copper – Tin Plated



- Made from tubular copper tin plated
- Inspection hole to check perfect connection
- Uninsulated
- Tin plated – reduces the risk of corrosion
- Made of copper, which is soft enough to crimp



Part Number	Dimensions (mm)					Cross Section (mm <sup>2</sup> )	Screw Hole Size	Standard Pack Quantity
	d	D	a	E	W			
1443013	4.7	6.9	11.5	22.0	12.0	10	M5	100
1443014	4.7	6.9	11.5	22.0	12.0	10	M6	100
1443015	4.7	6.9	11.5	23.7	13.5	10	M8	100
1443016	4.7	6.9	11.5	27.0	15.0	10	M10	100
1443018	5.6	7.8	11.3	22.0	12.0	16	M5	100
1443019	5.6	7.8	11.3	22.5	12.0	16	M6	100
1443020	5.6	7.8	11.3	23.7	13.5	16	M8	100
1443021	5.6	7.8	11.3	27.0	16.0	16	M10	100
1443023	7.1	9.5	13.5	25.0	13.5	25	M6	100
1443024	7.1	9.5	13.5	26.7	13.5	25	M8	100
1443025	7.1	9.5	13.5	30.0	16.0	25	M10	100
1443026	7.1	9.5	13.5	30.0	18.0	25	M12	100
1443027	8.2	11.0	16.0	29.7	15.7	35	M6	100
1443028	8.2	11.0	16.0	30.7	15.7	35	M8	100
1443029	8.2	11.0	16.0	33.0	16.0	35	M10	100
1443030	8.2	11.0	16.0	33.0	18.0	35	M12	100

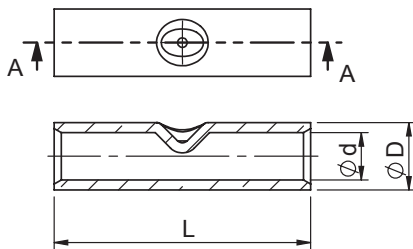
## Butt Connectors

SR E-0002

Copper – Tin Plated



- Made from tubular copper tin plated
- Uninsulated



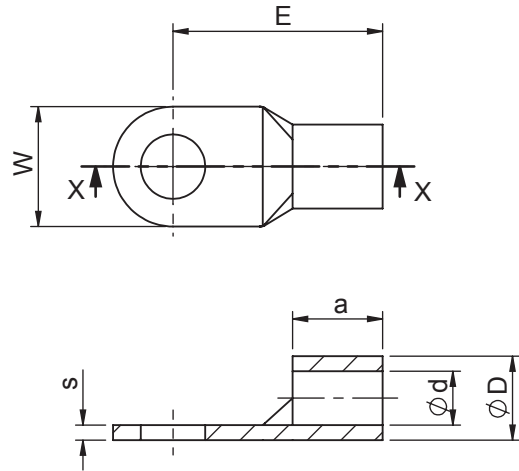
Part Number	Dimensions (mm)			Cross Section (mm <sup>2</sup> )	Standard Pack Quantity
	L	d	D		
1443212	30.0	4.5	7.0	10	100
1443213	30.0	5.5	8.5	16	100
1443214	38.0	7.0	10.0	25	100
1443215	42.0	8.5	12.0	35	100

## Ring Terminals

SR E-0003

Copper – Tin Plated

- Uninsulated and ideal for crimping
- Tin plated – reduces the risk of corrosion
- Made of copper, which is soft enough to crimp



Part Number	Dimensions (mm)						Cross Section (mm <sup>2</sup> )	Screw Hole Size	Standard Pack Quantity
	d	D	s	a	E	W			
1443122*+	1.6	3.2	0.8	5.0	11.0	6.0	0.75-1	M3	100
1443124*+	1.6	3.2	0.8	5.0	12.0	8.0	0.75-1	M4	100
1443125*+	1.6	3.2	0.8	5.0	13.0	10.0	0.75-1	M5	100
1443126+	1.6	3.2	0.8	5.0	13.0	10.0	0.75-1	M6	100
1443127+	1.6	3.2	0.8	5.0	17.0	14.0	0.75-1	M8	100
1443128+	1.6	3.2	0.8	5.0	17.0	14.0	0.75-1	M10	100
1443129*	2.3	3.9	0.8	5.0	11.0	6.0	1.5-2.5	M3	100
1443131*	2.3	3.9	0.8	5.0	12.0	8.0	1.5-2.5	M4	100
1443132*	2.3	3.9	0.8	5.0	14.0	10.0	1.5-2.5	M5	100
1443133*	2.3	3.9	0.8	5.0	16.0	11.0	1.5-2.5	M6	100
1443134*	2.3	3.9	0.8	5.0	17.0	14.0	1.5-2.5	M8	100
1443135	2.3	3.9	0.8	5.0	18.0	18.0	1.5-2.5	M10	100
1443136	2.3	3.9	0.8	5.0	18.0	18.0	1.5-2.5	M12	100
1443139*	3.6	5.6	1.0	6.0	14.0	8.0	4-6	M4	100
1443140*	3.6	5.6	1.0	6.0	15.0	10.0	4-6	M5	100
1443141*	3.6	5.6	1.0	6.0	16.0	11.0	4-6	M6	100
1443142*	3.6	5.6	1.0	6.0	19.0	14.0	4-6	M8	100
1443143*	3.6	5.6	1.0	6.0	21.0	18.0	4-6	M10	100

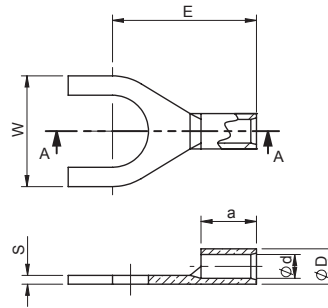
\*Conforms to DIN 46234 + Conforms to UL E475284

## Spade Terminals

SR E-0004

Copper – Tin Plated

- UL E475284
- Uninsulated and ideal for crimping
- Tin plated – reduces the risk of corrosion
- Made of copper, which is soft enough to crimp



Part Number	Dimensions (mm)						Cross Section (mm <sup>2</sup> )	Screw Hole Size	Standard Pack Quantity
	d	D	S	a	E	W			
1443168	1.6	3.2	0.8	5.0	11.0	6.0	0.75-1	M3	100
1443169	1.6	3.2	0.8	5.0	11.0	6.0	0.75-1	M3.5	100
1443170	1.6	3.2	0.8	5.0	12.0	8.0	0.75-1	M4	100
1443172	1.6	3.2	0.8	5.0	13.0	10.0	0.75-1	M5	100
1443173	1.6	3.2	0.8	5.0	13.0	10.0	0.75-1	M6	100
1443176	2.3	3.9	0.8	5.0	11.0	6.0	1.5-2.5	M3	100
1443178	2.3	3.9	0.8	5.0	12.0	8.0	1.5-2.5	M4	100
1443180	2.3	3.9	0.8	5.0	14.0	10.0	1.5-2.5	M5	100
1443181	2.3	3.9	0.8	5.0	16.0	11.0	1.5-2.5	M6	100
1443186	3.6	5.6	1.0	6.0	14.0	8.0	4-6	M4	100
1443187	3.6	5.6	1.0	6.0	15.0	10.0	4-6	M5	100
1443188	3.6	5.6	1.0	6.0	16.0	11.0	4-6	M6	100
1443189	3.6	5.6	1.0	6.0	19.0	14.0	4-6	M8	100

# THERE'S MORE ONLINE!

- Buy online
- Request free samples
- Easy to find products
- Download 3D CAD files

[www.essentracomponents.co.uk](http://www.essentracomponents.co.uk)





## Uninsulated Cord End Terminals

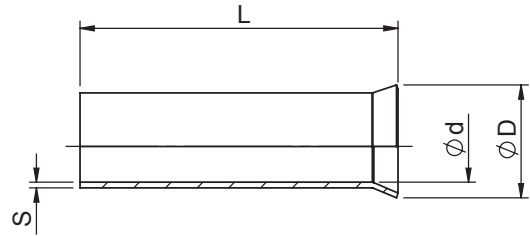
SR E-0005

Copper – Tin Plated

- Uninsulated for quick-fit crimping



- Protects exposed wires from damage
- Designed to terminate cable ends prior to fitting to terminal blocks or connectors
- Tin plated – reduces the risk of corrosion
- Made of copper, which is soft enough to crimp



Part Number	Dimensions (mm)				Cross Section (mm <sup>2</sup> )	Standard Pack Quantity
	L	d	D	S		
1443068	5.0	0.75	1.7	0.15	0.25	1000
1443069	7.0	0.75	1.7	0.15	0.25	1000
1443070	5.0	0.85	1.8	0.15	0.34	1000
1443071	7.0	0.85	1.8	0.15	0.34	1000
1443072	6.0	1.0	2.1	0.15	0.50	1000
1443073	8.0	1.0	2.1	0.15	0.50	1000
1443074	10.0	1.0	2.1	0.15	0.50	1000
1443075	12.0	1.0	2.1	0.15	0.50	1000
1443076	6.0	1.2	2.3	0.15	0.75	1000
1443077	8.0	1.2	2.3	0.15	0.75	1000
1443078	10.0	1.2	2.3	0.15	0.75	1000
1443079	12.0	1.2	2.3	0.15	0.75	1000
1443080	6.0	1.4	2.5	0.15	1.0	1000
1443081	8.0	1.4	2.5	0.15	1.0	1000
1443082	10.0	1.4	2.5	0.15	1.0	1000
1443083	12.0	1.4	2.5	0.15	1.0	1000
1443084	7.0	1.7	2.8	0.15	1.5	1000
1443085	10.0	1.7	2.8	0.15	1.5	1000
1443086	12.0	1.7	2.8	0.15	1.5	1000
1443087	15.0	1.7	2.8	0.15	1.5	1000
1443088	18.0	1.7	2.8	0.15	1.5	1000
1443089	7.0	2.2	3.4	0.15	2.5	1000
1443090	10.0	2.2	3.4	0.15	2.5	1000
1443091	12.0	2.2	3.4	0.15	2.5	1000
1443092	15.0	2.2	3.4	0.15	2.5	1000
1443093	18.0	2.2	3.4	0.15	2.5	1000
1443094	9.0	2.8	4.0	0.15	4.0	1000
1443095	12.0	2.8	4.0	0.15	4.0	1000
1443096	15.0	2.8	4.0	0.15	4.0	1000
1443097	18.0	2.8	4.0	0.15	4.0	1000
1443098	10.0	3.5	4.7	0.2	6.0	1000
1443099	12.0	3.5	4.7	0.2	6.0	1000

CONTINUED ON NEXT PAGE

## Uninsulated Cord End Terminals

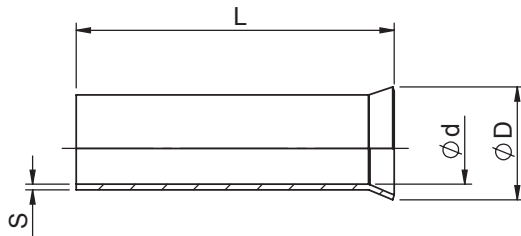
CONTINUED

SR E-0005

Copper – Tin Plated



- Uninsulated for quick-fit crimping
- Protects exposed wires from damage
- Designed to terminate cable ends prior to fitting to terminal blocks or connectors
- Tin plated – reduces the risk of corrosion
- Made of copper, which is soft enough to crimp



Part Number	Dimensions (mm)				Cross Section (mm <sup>2</sup> )	Standard Pack Quantity
	L	d	D	S		
1443100	15.0	3.5	4.7	0.2	6.0	1000
1443101	18.0	3.5	4.7	0.2	6.0	1000
1443102	20.0	3.5	4.7	0.2	6.0	1000
1443103	12.0	4.5	5.8	0.2	10.0	500
1443104	15.0	4.5	5.8	0.2	10.0	500
1443105	18.0	4.5	5.8	0.2	10.0	500
1443106	20.0	4.5	5.8	0.2	10.0	500
1443107	12.0	5.8	7.5	0.2	16.0	500
1443108	15.0	5.8	7.5	0.2	16.0	500
1443109	18.0	5.8	7.5	0.2	16.0	500
1443110	20.0	5.8	7.5	0.2	16.0	500
1443111	12.0	7.3	9.5	0.2	25.0	100
1443112	15.0	7.3	9.5	0.2	25.0	100
1443113	18.0	7.3	9.5	0.2	25.0	100
1443114	20.0	7.3	9.5	0.2	25.0	100
1443115	22.0	7.3	9.5	0.2	25.0	100
1443116	25.0	7.3	9.5	0.2	25.0	100
1443117	12.0	8.3	11.0	0.2	35.0	100
1443118	18.0	8.3	11.0	0.2	35.0	100
1443119	20.0	8.3	11.0	0.2	35.0	100
1443120	22.0	8.3	11.0	0.2	35.0	100
1443121	25.0	8.3	11.0	0.2	35.0	100

# CABLE TERMINALS

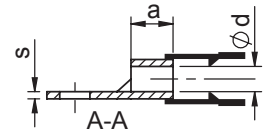
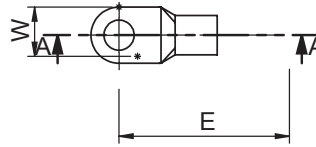
## Insulated Ring Terminals – DIN

SR E-0006

Copper – Tin Plated – Polyamide Sleeve



- DIN 46237 - Refers only to the tubular part of the terminal
- Polyamide sleeve
- Easy entry



Part Number	Dimensions (mm)					Colour	Cross Section (mm <sup>2</sup> )	Screw Hole Size	Standard Pack Quantity
	d	s	a	E	W				
1443145	1.6	0.8	5.0	16.0	6.0	Red	0.75-1	M 3	100
1443147	1.6	0.8	5.0	17.0	8.0	Red	0.75-1	M 4	100
1443148	1.6	0.8	5.0	18.0	10.0	Red	0.75-1	M 5	100
1443149	1.6	0.8	5.0	18.0	10.0	Red	0.75-1	M 6	100
1443150	1.6	0.8	5.0	22.0	14.0	Red	0.75-1	M 8	100
1443151	1.6	0.8	5.0	22.0	14.0	Red	0.75-1	M 10	100
1443152	2.3	0.8	5.0	17.0	6.0	Blue	1.5-2.5	M 3	100
1443154	2.3	0.8	5.0	18.0	8.0	Blue	1.5-2.5	M 4	100
1443155	2.3	0.8	5.0	20.0	10.0	Blue	1.5-2.5	M 5	100
1443156	2.3	0.8	5.0	22.0	11.0	Blue	1.5-2.5	M 6	100
1443157	2.3	0.8	5.0	23.0	14.0	Blue	1.5-2.5	M 8	100
1443158	2.3	0.8	5.0	24.0	18.0	Blue	1.5-2.5	M 10	100
1443162	3.6	1.0	6.0	20.0	8.0	Yellow	4-6	M 4	100
1443163	3.6	1.0	6.0	21.0	10.0	Yellow	4-6	M 5	100
1443164	3.6	1.0	6.0	22.0	11.0	Yellow	4-6	M 6	100
1443165	3.6	1.0	6.0	25.0	14.0	Yellow	4-6	M 8	100
1443166	3.6	1.0	6.0	27.0	18.0	Yellow	4-6	M 10	100

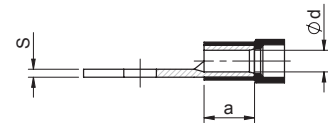
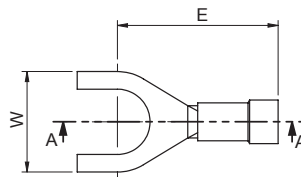
## Insulated Spade Terminals – DIN

SR E-0007

Copper – Tin Plated – Polyamide Sleeve



- DIN 46237 - Refers only to the tubular part of the terminal
- Polyamide sleeve
- Easy entry



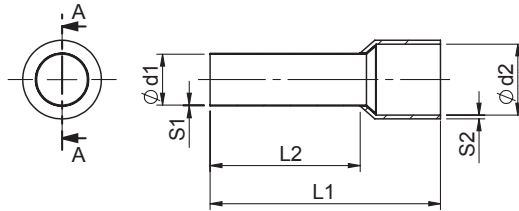
Part Number	Dimensions (mm)					Colour	Cross Section (mm <sup>2</sup> )	Screw Hole Size	Standard Pack Quantity
	d	s	a	E	W				
1443191	1.6	0.8	5.0	16.0	6.0	Red	0.75-1	M 3	100
1443193	1.6	0.8	5.0	17.0	8.0	Red	0.75-1	M 4	100
1443194	1.6	0.8	5.0	18.0	10.0	Red	0.75-1	M 5	100
1443195	1.6	0.8	5.0	18.0	10.0	Red	0.75-1	M 6	100
1443196	1.6	0.8	5.0	19.2	14.0	Red	0.75-1	M 8	100
1443198	2.3	0.8	5.0	17.0	6.0	Blue	1.5-2.5	M 3	100
1443200	2.3	0.8	5.0	18.0	8.0	Blue	1.5-2.5	M 4	100
1443201	2.3	0.8	5.0	20.0	10.0	Blue	1.5-2.5	M 5	100
1443202	2.3	0.8	5.0	22.0	11.0	Blue	1.5-2.5	M 6	100
1443203	2.3	0.8	5.0	20.2	14.0	Blue	1.5-2.5	M 8	100
1443207	3.6	1.0	6.0	20.0	8.0	Yellow	4-6	M 4	100
1443208	3.6	1.0	6.0	21.0	10.0	Yellow	4-6	M 5	100
1443209	3.6	1.0	6.0	22.0	11.0	Yellow	4-6	M 6	100
1443210	3.6	1.0	6.0	25.0	14.0	Yellow	4-6	M 8	100

## Insulated Cord End Terminals

SR E-0008

Copper – Tin Plated – Polyamide Sleeve

- Improves connection and circuit continuity
- Used to strengthen fine wires when terminating cables into connectors or terminals
- Provides neat and clean finish for connections
- DIN 46228/4 standard
- German and French standard ranges available upon request



Part Number	Dimensions (mm)						Colour	Cross Section (mm <sup>2</sup> )	Standard Pack Quantity
	L1	L2	d1	d2	s1	s2			
1443032	10.0	6.0	0.75	1.8	0.15	0.25	Yellow	0.25	500
1443033	12.0	8.0	0.75	1.8	0.15	0.25	Yellow	0.25	500
1443034	10.0	6.0	0.80	2.0	0.15	0.25	Blue	0.34	500
1443035	12.0	8.0	0.80	2.0	0.15	0.25	Blue	0.34	500
1443036	12.0	6.0	1.0	2.6	0.15	0.25	White	0.5	500
1443037	14.0	8.0	1.0	2.6	0.15	0.25	White	0.5	500
1443038	16.0	10.0	1.0	2.6	0.15	0.25	White	0.5	500
1443039	12.0	6.0	1.2	2.8	0.15	0.25	Grey	0.75	500
1443040	14.0	8.0	1.2	2.8	0.15	0.25	Grey	0.75	500
1443041	16.0	10.0	1.2	2.8	0.15	0.25	White	0.75	500
1443042	18.0	12.0	1.2	2.8	0.15	0.25	Grey	0.75	500
1443043	12.0	6.0	1.4	3.0	0.15	0.25	Red	1.0	500
1443044	14.0	8.0	1.4	3.0	0.15	0.25	Red	1.0	500
1443045	16.0	10.0	1.4	3.0	0.15	0.25	Red	1.0	500
1443046	18.0	12.0	1.4	3.0	0.15	0.25	Red	1.0	500
1443047	14.0	8.0	1.7	3.5	0.15	0.25	Black	1.5	500
1443048	16.0	10.0	1.7	3.5	0.15	0.25	Black	1.5	500
1443049	18.0	12.0	1.7	3.5	0.15	0.25	Black	1.5	500
1443050	14.0	8.0	2.2	4.2	0.15	0.25	Blue	2.5	500
1443051	16.0	10.0	2.2	4.2	0.15	0.25	Blue	2.5	500
1443052	18.0	12.0	2.2	4.2	0.15	0.25	Blue	2.5	500
1443053	24.0	18.0	2.2	4.2	0.15	0.25	Blue	2.5	500
1443054	17.0	10.0	2.8	4.8	0.20	0.30	Grey	4.0	500
1443055	20.0	12.0	2.8	4.8	0.20	0.30	Grey	4.0	500
1443056	26.0	18.0	2.8	4.8	0.20	0.30	Grey	4.0	500
1443057	20.0	12.0	3.5	6.3	0.20	0.30	Yellow	6.0	100
1443058	26.0	18.0	3.5	6.3	0.20	0.30	Yellow	6.0	100
1443059	22.0	12.0	4.5	7.6	0.20	0.40	Red	10.0	100
1443060	25.0	15.0	4.5	7.6	0.20	0.40	Red	10.0	100
1443061	28.0	18.0	4.5	7.6	0.20	0.40	Red	10.0	100
1443062	24.0	12.0	5.8	8.8	0.20	0.40	Blue	16.0	100
1443063	30.0	18.0	5.8	8.8	0.20	0.40	Blue	16.0	100
1443064	30.0	16.0	7.3	11.2	0.20	0.40	Yellow	25.0	50
1443065	36.0	22.0	7.3	11.2	0.20	0.40	Yellow	25.0	50
1443066	30.0	16.0	8.3	12.7	0.20	0.40	Red	35.0	50
1443067	39.0	25.0	8.3	12.7	0.20	0.40	Red	35.0	50

## Fan Filter Sets

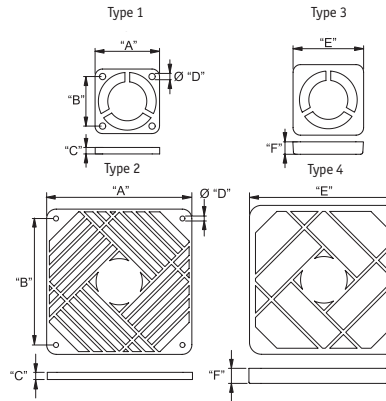
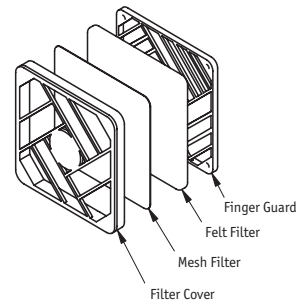
RCP/RFG/RFC/RFF/RMF

**Filter Cover & Guard:** Black Nylon 6/6 25% Glass Filled UL94 V0, RMS-27

**Felt Filter:** White Polyester, RMS-28

**Mesh Filter:** Stainless Steel AISI 304, RMS-29

- Filter set (RCP) provides IP30 protection
- Filter Set includes finger guard, filter cover, mesh filter and felt filter



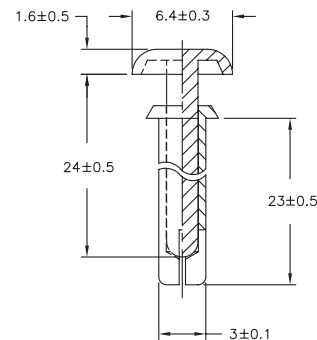
Filter Set Part Number*	Finger Guard						Filter Cover			
	Finger Guard Part Number	"A"	"B"	"C"	"D" Hole Ø Min.	Type	Filter Cover Part Number	"E"	"F"	Type
RCP-040-T	RFG-040-T	43	32.2	4.3	4.1	1	RFC-040-T	46.5	8.4	3
RCP-060-T	RFG-060-T	60.5	50.1	6	4.1	2	RFC-060-T	64.9	12.5	4
RCP-080-T	RFG-080-T	80.6	71.8	6	4.1	2	RFC-080-T	84.8	12.5	4
RCP-092-T	RFG-092-T	92.3	82.4	6	4.1	2	RFC-092-T	96.9	12.5	4
RCP-120-T	RFG-120-T	120.6	105.5	6.2	4.1	2	RFC-120-T	126.3	12.5	4

	40 x 40	60 x 60	80 x 80	92 x 92	120 x 120
Finger Guard Only	RFG-040-T (160/Bag)	RFG-060-T (60/Bag)	RFG-080-T (30/Bag)	RFG-092-T (20/Bag)	RFG-120-T (30/Bag)
*Filter Set	RCP-040-T (50/Box)	RCP-060-T (20/Box)	RCP-080-T (10/Box)	RCP-092-T (10/Box)	RCP-120-T (10/Box)
Felt Filter Only	RFF-040-T (300/Bag)	RFF-060-T (100/Bag)	RFF-080-T (100/Bag)	RFF-092-T (100/Bag)	RFF-120-T (50/Bag)
Mesh Filter Only	RMF-040-T (300/Bag)	RMF-060-T (500/Bag)	RMF-080-T (400/Bag)	RMF-092-T (400/Bag)	RMF-120-T (250/Bag)

## Snap Rivet (Long)

SR-3230B

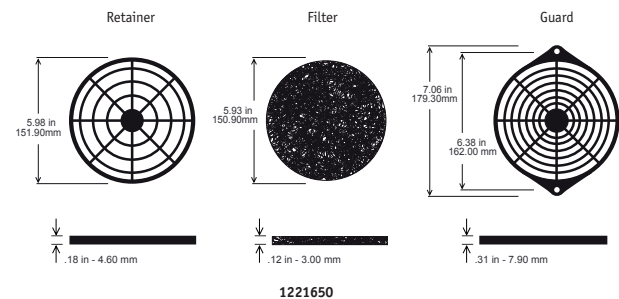
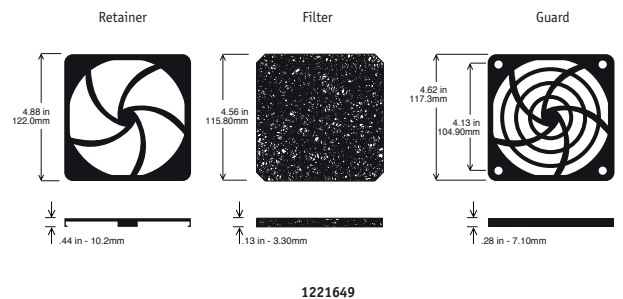
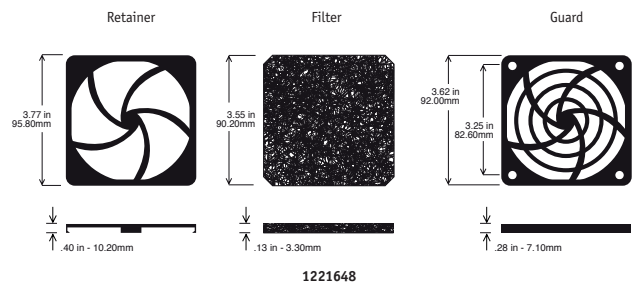
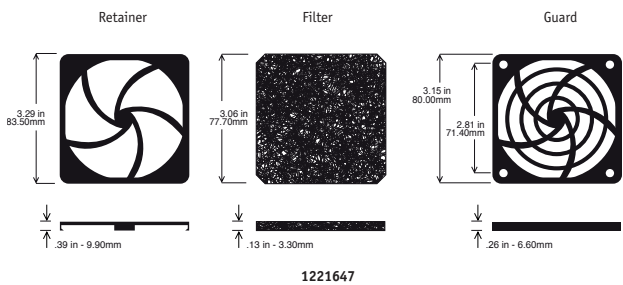
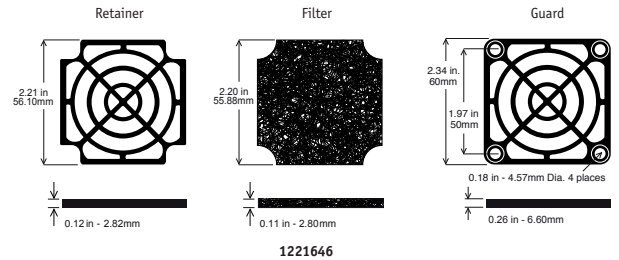
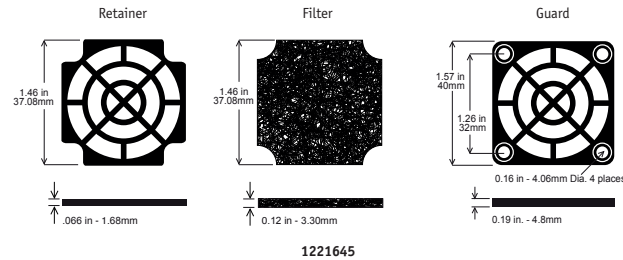
- Black Nylon 6, RMS-52



Part Number	Mounting Hole Ø (mm)	Panel Thickness (mm)	Extraction Force	Standard Pack Quantity
SR-3230B	3.1-3.2	20.5-21.5	8kg min.	1000

## Fan Filters Assemblies

- Filter Assemblies include a finger guard, a foam filter and a retainer
- The guards and retainers are all manufactured using high impact plastics which all meet UL94-V0 flammability requirements
- The foam filter meets UL94HF1 smoke generation requirements



Part Number Full Assembly	Standard Pack Quantity
1221645	500
1221646	1000
1221647	500
1221648	400
1221649	200
1221650	100

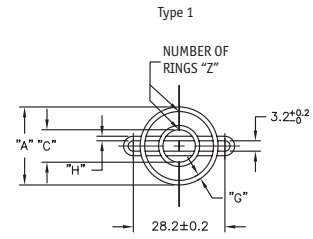
Part Number Finger Guard (Only)	Standard Pack Quantity
1221639	500
1221640	1000
1221641	1000
1221642	1000
1221643	500
1221644	500

Part Number Foam Filter (Only)	Standard Pack Quantity
1221651	250
1221652	250
1221653	200
1221654	150
1221655	100
1221656	100

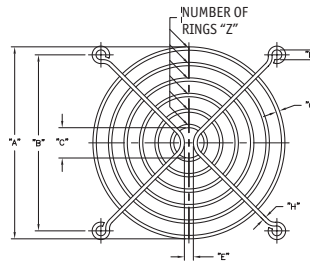
## Fan Guards

### RCOFM

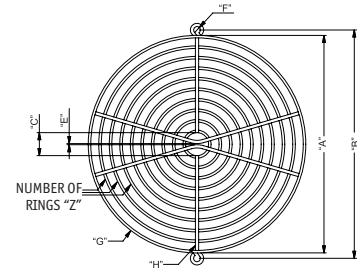
- Steel Wire Electroplated, RMS-261
- Nickel Chrome Finish, RMS-229



Type 2



Type 3

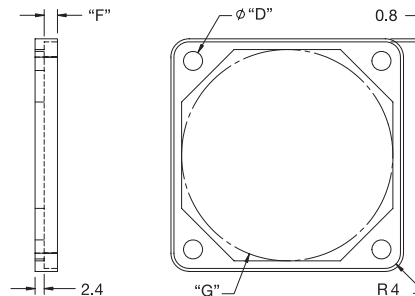


Part Number	Type	Dimensions (mm)										Standard Pack Quantity
		"A"	"B"	"C"	"D"	"E"	"F"	"G"	"H"	"Z"		
RCOFM-25	1	24	-	10.5	2.2	-	-	1.4	1.4	2	100	
RCOFM-40	2	29.1	32	14.2	4.8	4	4	1.6	1.6	2	100	
RCOFM-50	2	41.12	40	14.2	4.8	3.7	4.6	1.6	1.6	3	100	
RCOFM-60	2	53.2	50	14.2	4.4	3	4.6	1.6	1.6	4	100	
RCOFM-80	2	76.2	71.5	14.2	4.9	3.5	5.2	1.8	1.8	5	100	
RCOFM-92	2	90	82.5	14.2	5.5	4.2	4.6	1.6	1.8	6	100	
RCOFM-120	2	115.6	104.8	14.0	5.5	2.6	4.6	1.8	1.8	8	100	
RCOFM-150-A	3	154.43	162.05	16.3	6.45	0.81	4.83	1.8	2.3	10	100	

## Fan Gasket

### FGA

- Black Silicone Rubber, 40 Shore A, RMS-101

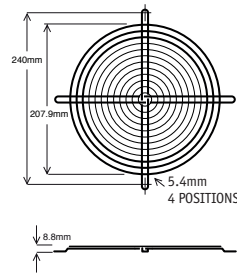


Part Number	Fan Size	Fan Hole Spacing	Dimensions (mm)			Standard Pack Quantity
			"D"	"F"	"G" Ref.	
FGA-40	40	32	4.5	3.5	36	100
FGA-50	50	40	4.5	3.5	46	100
FGA-60	60	50	5	3.5	56	100
FGA-70	70	61.5	5	4	66	100
FGA-80	80	71.5	5	4	75	100
FGA-92	92	82.5	5	4	87	100
FGA-120	120	105	5	4	115	100

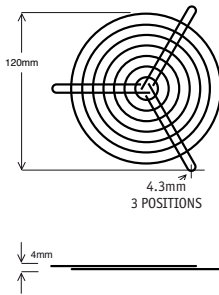
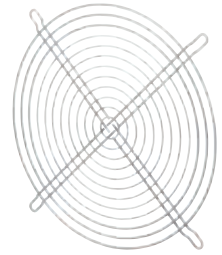
# Wire Fan Guards

Nickle Plated Steel

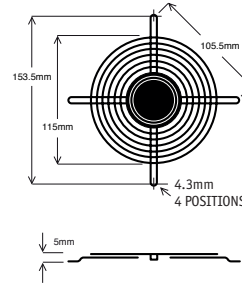
Part Number	Rib Diameter (mm)	Ring Diameter (mm)	Standard Pack Quantity
1221661	2.4 and 1.5	2.4	100
1221662	2.0	2.0	200
1221663	1.4	1.4	400
1221664	1.5	1.2	1000
1221665	2.0	1.5	200
1221666	2.0	1.5	200
1221667	2.5	1.2	400



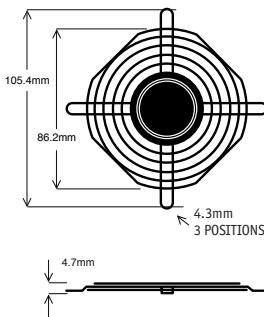
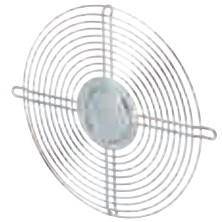
1221661



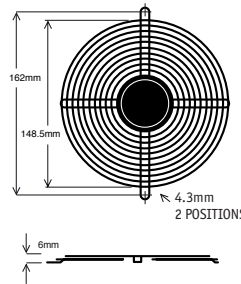
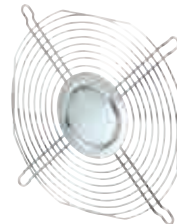
1221662



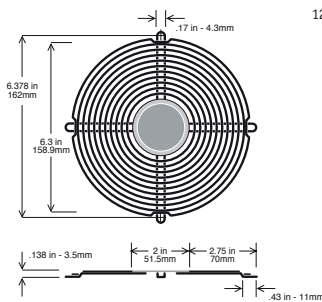
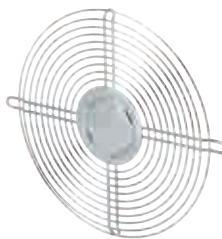
1221663



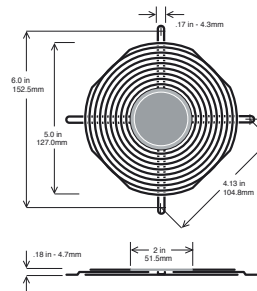
1221664



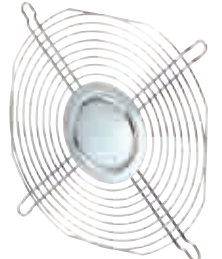
1221665



1221666



1221667





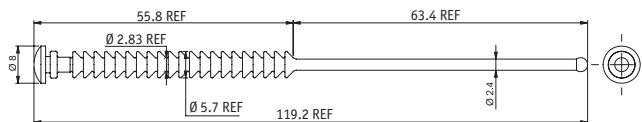
## Multi Fan Mount

### FMM

- Black Silicone Rubber 40 Shore A, RMS-316,



Patent Pending



Part Number	Dimensions (mm)				Standard Pack Quantity
	Fan Thickness	Fan Hole Ø	Panel Thickness	Panel Hole Ø	
FMM-1	10 - 51	3.2 - 4.5	1 - 1.5	4.5 - 4.8	500

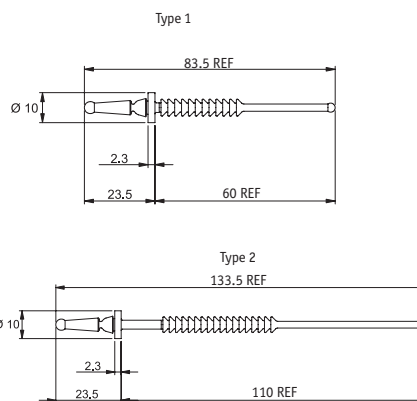
## Break-Away Fan Mount

### FMB

- Black Silicone Rubber 40 Shore A, RMS-316



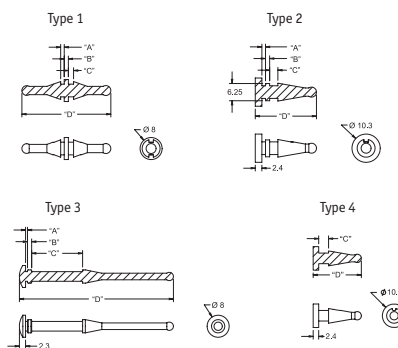
Part Number	Type	Dimensions (mm)				Standard Pack Quantity
		Panel Hole Ø	Panel Thickness	Fan Hole Ø	Fan Thickness	
FMB-1	2	4.5-5.0	0.8-1.6	4.0-4.5	25-51	1000
FMB-2	1	4.5-5.0	0.8-1.6	3.2-3.5	Up to 10	1000
FMB-2	1	4.5-5.0	0.8-1.6	4.0-4.5	Up to 25	1000



## Fan Mounts

### FM

- Black EPDM Rubber/Silicone Rubber



Part Number	Type	Material	Dimensions (mm)				Hole Ø x 2 (mm)	Fan Thickness (mm)	Max. Panel Thickness (mm)	Standard Pack Quantity
			"A"	"B"	"C"	"D"				
FM-1	1	EPDM Rubber. 30 Shore A. RMS-166	1.3	1.5	1.9	32.3	5	2	1.4	1000
FM-2	1	EPDM Rubber. 40 Shore A. RMS-180	1.3	1.5	1.9	32.3	5	2	1.4	1000
FM-3	2	EPDM Rubber. 30 Shore A. RMS-166	1.3	1.5	3	22.2	5	3.1	1.4	1000
FM-4	2	EPDM Rubber. 40 Shore A. RMS-180	1.3	1.5	3	22.2	5	3.1	1.4	1000
FM-5	3	Silicone Rubber. 40 Shore A. RMS-316	0.7	1.5	18.5	56	3.5	20	0.8	1000
FM-6	3	Silicone Rubber. 40 Shore A. RMS-316	2.5	2	14	53.8	4.3	15	3	1000
FM-7	3	Silicone Rubber. 40 Shore A. RMS-316	0.7	1.5	24	73	3.5	25-28	0.8	1000
FM-8	4	EPDM Rubber. 30 Shore A. RMS-166	-	-	4.3	21	5	5.4*	5.4*	1000
FM-9	4	EPDM Rubber. 40 Shore A. RMS-180	-	-	4.3	21	5	5.4*	5.4*	1000

\*Maximum combined panel and fan thickness

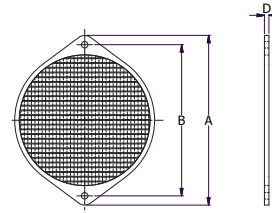
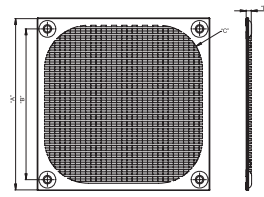
## Metal Frame Filter

### MFF

Frame: Aluminum 1060, RMS-247;

Mesh: Stainless Steel 304, RMS-283

- Provides EMI and RFI protection
- Type 1 Wire Ø: 23
- Type 1 Mesh Size: 30 Strands/1 25.4
- Type 2 Mesh Size:  $\frac{3}{16}$ " Pitch,  $\frac{1}{8}$ " deep



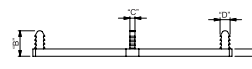
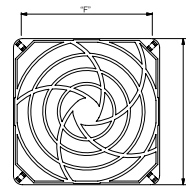
1221657

Part Number	Dimensions (mm)					Mounting hole Ø x 4	Standard Pack Quantity
	"A" ± 1	"B"	"C"	"D" ± 1			
MFF-60	59.2	50.0	R7.5	4.0		4.32	100
MFF-80	83.8	71.4	R10.0	3.5		4.32	100
MFF-92	92.0	82.5	R12.5	4.0		4.32	100
MFF-120	118.9	104.8	R25	3.5		4.32	100
1221657	182.0	162.0	-	4.8		4.30	400

## Fan Guard

### FGPT

- Black UL94 HB ABS, RMS-171



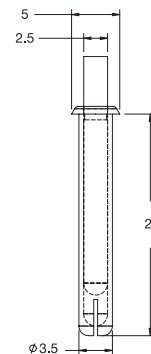
Bottom Hole: Ø 4.7±0.1

Part Number	Dimensions (mm)						Standard Pack Quantity
	"A"	"B"	"C"	"D"	"E"	"F" Ref.	
FGPT-80	80	14.5	2.8	5.5	4.00	71	20
FGPT-92	92	15.0	2.6	5.5	4.15	82	20
FGPT-120	119	16.5	3.0	5.5	4.50	104	10

## Fan Mount Rivet

### FR-1

- Black UL94 V-2 Nylon 6, RMS-52



Part Number	Hole Ø (mm)	Mounting Thickness (mm)	Installation Tool	Standard Pack Quantity
FR-1	3.5	20.5 - 21.5	PPR-T1	1000