

STAY ON TRACK WITH OUR **CASTORS**

- A range of fitting options to suit your needs
- Ensure safety and efficient movement with a choice of load capacity ranging from 30kg up to 700kg
- Choice of wheel bearings to provide shock resistance, low maintenance, reliability and robust performance regardless of your application challenges



621



624



628



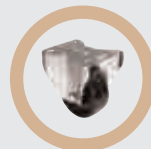
630



644



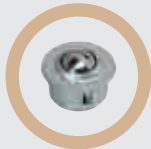
650



651



655



664



669

MORE THAN
600
CASTOR
PRODUCTS
AVAILABLE

CASTORS AND BALL TRANSFER UNITS



FURNITURE CASTORS

620



DESIGN CASTORS

628



INDUSTRIAL CASTORS

632



HEAVY DUTY CASTORS

655



SPECIAL PURPOSE CASTORS

659



BALL TRANSFERS

660



FLOAT-ON CASTORS

669

FURNITURE CASTORS

Twin Wheel Castor

SR 1547

Black Polyamide

- Spark eroded finish
- Easy glide action
- Choice of mounting stems
- A choice of fittings below



Unhooded

Hooded

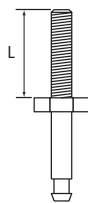
40mm Braked

50mm - hooded Braked

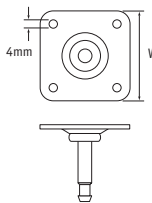
Part Number	Dimensions (mm)			Max Static Load Bearing (kg)	Standard Pack Quantity
	Wheel Dia.	Hooded	Braked		
500300	32	Yes	No	30	150
500301	40	No	No	50	150
500302	40	Yes	No	44	150
500303	40	Yes	Yes	44	150
500304	40	Yes	No	50	150
500305	40	Yes	Yes	50	150
500306	50	Yes	No	60	100
500307	50	Yes	Yes	60	100
500308	50	Yes	No	80	100
500309	50	Yes	Yes	80	100



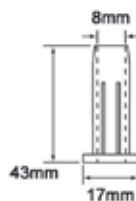
Type 1
Gripneck Stem



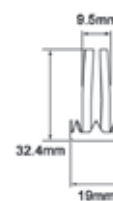
Type 2
Threaded Stem



Type 3
Plate Fixing



Type 4
Plastic Socket for
Gripneck Stem



Type 5
Metal Socket for
Gripneck Stem

Castor fittings

Part Number	Use with	Type	Dimensions (mm)	Standard Pack Quantity
500320	32mm, 40mm - hooded	1	38 (L)	150
500319	32mm, 40mm - hooded	2	M8 x 15 (L)	150
500321	32mm, 40mm - hooded	2	M8 x 25 (L)	150
1287093	32mm, 40mm - hooded	3	35 x 35 (W)	150
500316	32mm, 40mm, 50mm - hooded	4	-	900
500324	40mm - unhooded	1	38 (L)	150
500322	40mm - unhooded	2	M8 x 15 (L)	150
500325	40mm - unhooded	2	M8 x 25 (L)	150
1287183	40mm - unhooded	3	35 x 35 (W)	150
500312	50mm - hooded	1	38 (L)	100
500310	50mm - hooded	2	M8 x 15 (L)	100
500313	50mm - hooded	2	M8 x 25 (L)	100
500314	50mm - hooded	2	M10 x 15 (L)	100
500315	50mm - hooded	2	M10 x 25 (L)	100
500311	50mm - hooded	3	38 x 38 (L)	100
500317	50mm - hooded	5	-	300

The weight loadings quoted in this catalogue are for guide purposes only and assume that castors are used in a normal operating environment with floors in a smooth and reasonable condition.

Uneven or irregular floors will cause increased shock loadings. Castors of higher load-bearing capacity must be specified in these situations.

Castor loading capacity can be seriously impaired if castors are misused or poorly maintained, e.g. if used outside normal operating temperatures and/or if used in caustic environments.

Swivel Castor

SR 5787

Polyamide/Polyurethane

- Easy glide action
- Choice of black and natural polyamide or black polyurethane
- All supplied with gripneck stem



Style 1

Style 1 – Black Polyamide

Part Number	Wheel Diameter (mm)	Hooded	Braked	Approx Load Capacity (kg)	Standard Pack Quantity
497153	50	Yes	No	60	100
497154	50	Yes	Yes	60	100
497151*	50	Yes	No	100	100

*Natural Polyamide



Style 2

Style 2 – Black Polyamide

Part Number	Wheel Diameter (mm)	Hooded	Braked	Approx Load Capacity (kg)	Standard Pack Quantity
497403	50	Yes	No	60	100
497405	50	Yes	Yes	60	100
497160	60	No	No	60	100



Style 3

Style 3 – Black Polyurethane

Part Number	Wheel Diameter (mm)	Hooded	Braked	Approx Load Capacity (kg)	Standard Pack Quantity
497404	50	Yes	No	60	100
497406	50	Yes	Yes	60	100
497402	60	No	No	60	100

Thermoplastic Castor

SR 5768

- Twin wheel castor with thermoplastic polymer wheel and swivel housing
- A choice of plate, threaded stem and knurled stem fitting
- Threaded stem has an M8 thread
- Knurled stem fitting is suitable for wood

Type 1
Fixed Plate



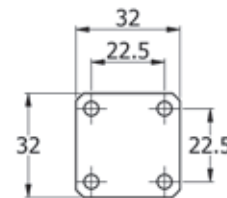
Type 2
Threaded Stem



Type 3
Knurled Stem



Part Number	Wheel Diameter (mm)	Type	Standard Pack Quantity
499625	35	1	200
499626	45	1	100
499627	35	2	220
499628	45	2	100
499630	45	3	100



The weight loadings quoted in this catalogue are for guide purposes only and assume that castors are used in a normal operating environment with floors in a smooth and reasonable condition.

Uneven or irregular floors will cause increased shock loadings. Castors of higher load-bearing capacity must be specified in these situations.

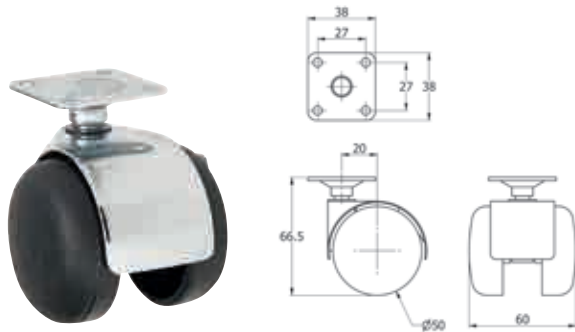
Castor loading capacity can be seriously impaired if castors are misused or poorly maintained, e.g. if used outside normal operating temperatures and/or if used in caustic environments.

Metal Hooded Castor

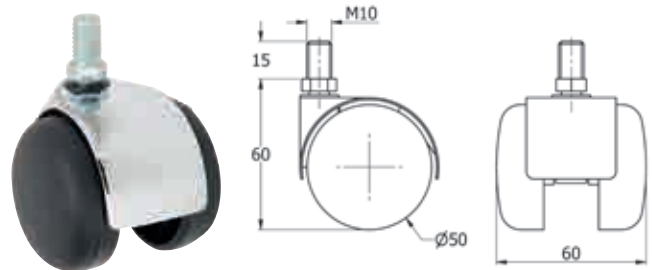
SR 5769

Polyamide Wheel with Gloss Metallic Hood

- Twin wheel polyamide castor
- Choice of swivel plate, threaded or knurled fittings



Type 1



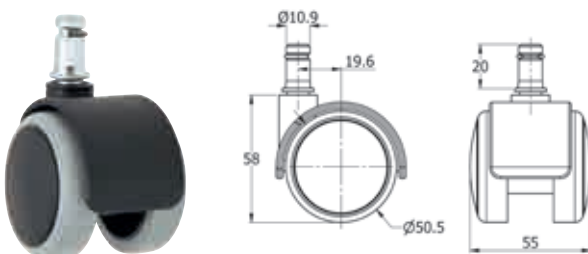
Type 2

Part Number	Wheel Diameter (mm)	Max Static Load Bearing (kg)	Type	Standard Pack Quantity
499631	50	35	1	64
499632	50	35	2	64

Grey Castor

SR 5771

- Grey thermoplastic wheel with grey finished steel housing
- Grip neck stem fitting
- Click in design suitable for quick installation



Part Number	Wheel Diameter (mm)	Approx Load Capacity (kg)	Standard Pack Quantity
499652	50	35	60

The weight loadings quoted in this catalogue are for guide purposes only and assume that castors are used in a normal operating environment with floors in a smooth and reasonable condition.

Uneven or irregular floors will cause increased shock loadings. Castors of higher load-bearing capacity must be specified in these situations.

Castor loading capacity can be seriously impaired if castors are misused or poorly maintained, e.g. if used outside normal operating temperatures and/or if used in caustic environments.

Spherical Wheel Castor

- Swivel Pressed Steel with chrome plated housing
- Single ball race
- Available as a wheel, or with plate, threaded stem or knurled fitting
- Type 1: Pin hole M5 screw
- Type 3: M8 threaded stem fitting
- Type 4: 8mm knurled stem fitting

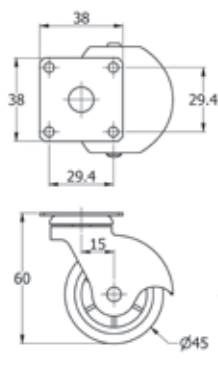
SR 5765 - Black Polypropylene

Part Number	Wheel Diameter (mm)	Approx Load Capacity (kg)	Type	Standard Pack Quantity
499601	35	12	1	360
499602	45	15	1	200
499603	35	12	2	144
499604	45	15	2	100
499605	35	12	3	152
499606	45	15	3	120
499607	35	12	4	140

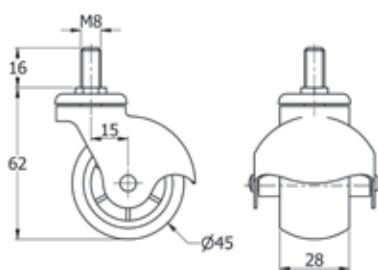


SR 5766 - Polypropylene Wheel with Rubber Tyre

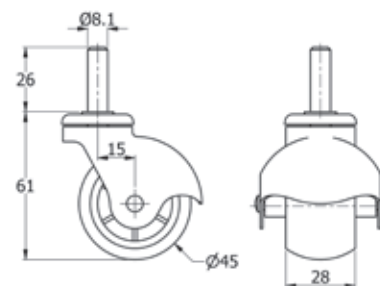
Part Number	Wheel Diameter (mm)	Approx Load Capacity (kg)	Type	Standard Pack Quantity
499610	45	15	2	100
499611	45	15	3	120



Type 2



Type 3



Type 4

The weight loadings quoted in this catalogue are for guide purposes only and assume that castors are used in a normal operating environment with floors in a smooth and reasonable condition.

Uneven or irregular floors will cause increased shock loadings. Castors of higher load-bearing capacity must be specified in these situations.

Castor loading capacity can be seriously impaired if castors are misused or poorly maintained, e.g. if used outside normal operating temperatures and/or if used in caustic environments.

Thermoplastic Wheels

SR 5767

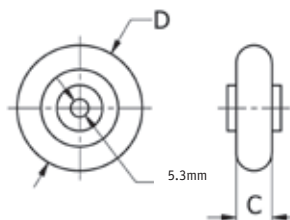


35mm dia Wheel



Ø40mm & Ø50mm

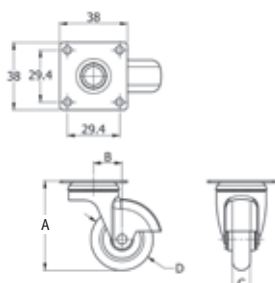
- 35mm diameter - one piece thermoplastic wheel
- 40mm and 50mm diameter - one piece thermoplastic polymer wheel with bonded brass plated steel discs



Part Number	Dimensions (mm)		Approx Load Capacity (kg)	Standard Pack Quantity
	C	D		
499613	10	35	10	1000
499617	9.6	40	12	600
499618	11.8	50	15	360

Black Plastic Castor with Swivel Plate Fitting

SR 5767

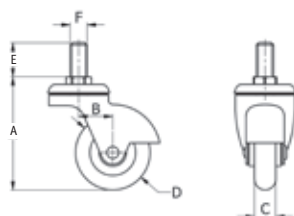


- Suitable for cabinets and furniture
- Pressed steel swivel and brass-plated housing with a swivel plate fitting
- 35mm diameter - one piece thermoplastic wheel
- 40mm and 50mm diameter - one piece thermoplastic polymer wheel with bonded brass plated steel discs

Part Number	Dimensions (mm)				Approx Load Capacity (kg)	Standard Pack Quantity
	A	B	C	D		
499614	51	16	16	35	10	180
499619	53.5	16	16	40	12	160
499620	66	18	17	50	15	136

Black Plastic Castor with Threaded Stem Fitting

SR 5767



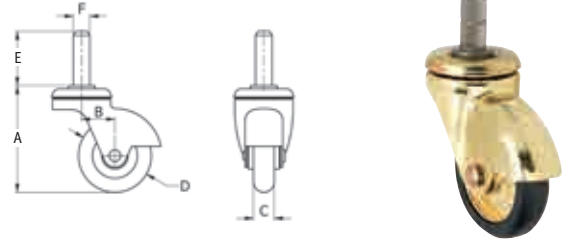
- Suitable for cabinets and furniture
- Pressed steel swivel and brass-plated housing with a swivel plate fitting
- 35mm diameter - one piece thermoplastic wheel
- 40mm and 50mm diameter - one piece thermoplastic polymer wheel with bonded brass plated steel discs

Part Number	Dimensions (mm)					Approx Load Capacity (kg)	Standard Pack Quantity
	A	B	C	D	E		
499615	53	16	16	35	16	M8	192
499621	55.5	16	16	40	16	M8	168
499622	68	18	17	50	16	M8	144

Black Plastic Castor with Knurled Stem Fitting

SR 5767

- Suitable for cabinets and furniture
- Pressed steel swivel and brass-plated housing with a knurled stem fitting, suitable for wood
- 35mm diameter – one piece thermoplastic wheel
- 40mm and 50mm diameter – one piece thermoplastic polymer wheel with bonded brass plated steel discs

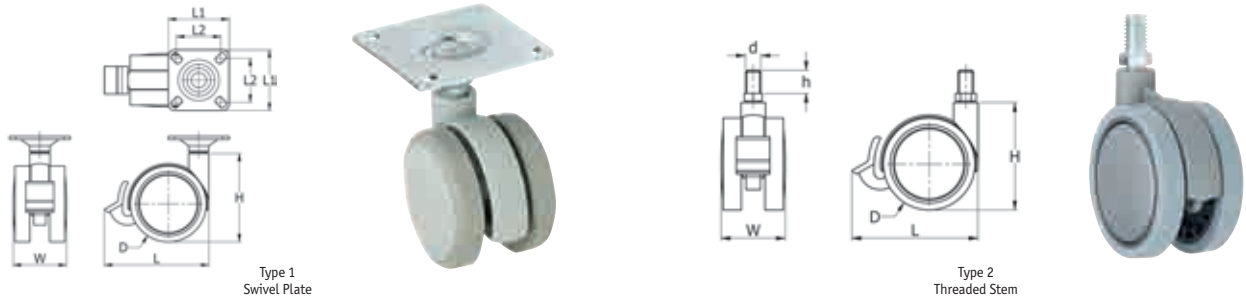


Part Number	Dimensions (mm)						Approx Load Capacity (kg)	Standard Pack Quantity
	A	B	C	D	E	F		
499616	51	16	16	35	26	8.1	10	184
499623	53.5	16	16	40	26	8.1	12	160
499624	66	18	17	50	26	8.1	15	134

Twin Wheel Castor with Thermoplastic Rubber Wheel

SR 5770

- Grey die-cast material housing
- Swivel plate or threaded stem fitting options
- Rubber wheel absorbs vibrations
- Wheel rubber hardness - Shore A 90



Part Number	Dimensions (mm)								Approx. Load Capacity (kg)	Type	Braked	Standard Pack Quantity
	D	d x h	L	L1	L2	W	H					
499634*	40	-	-	42	32	33	43	40	1	No	100	
499635	60	-	-	48	35	42	70	50	1	No	48	
499636	60	-	82	48	35	42	70	50	1	Yes	40	
499641	100	-	-	60	42	57	109	70	1	No	16	
499642	120	-	-	60	42	66	135	70	1	No	10	
499643	75	-	95	48	35	47	91	50	1	Yes	28	
499637*	40	M10 x 15	-	-	-	33	43	40	2	No	180	
499638	60	M10 x 15	-	-	-	42	70	50	2	No	60	
499639	60	M10 x 15	82	-	-	42	70	50	2	Yes	60	
499646	75	M10 x 15	-	-	-	47	91	50	2	No	32	
499647	100	M10 x 25	-	-	-	57	109	70	2	No	16	
499648	120	M10 x 25	-	-	-	66	135	70	2	No	10	
499649	75	M10 x 15	95	-	-	47	91	50	2	Yes	28	
499650	100	M10 x 25	127	-	-	66	135	70	2	Yes	12	
499651	120	M10 x 25	150	-	-	66	135	70	2	Yes	10	

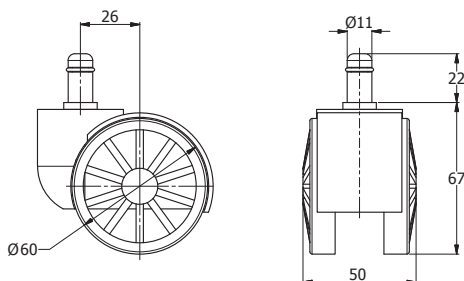
40mm wheel rubber hardness - Shore A 75

Spoke Wheel Castor

SR 6438

Polyamide Castor

- Grip neck fitting
- 10 spoke castor
- Black wheel and silver hood



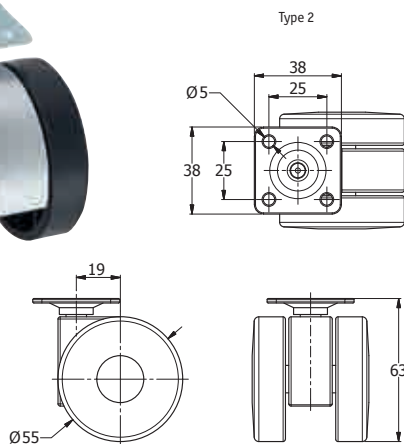
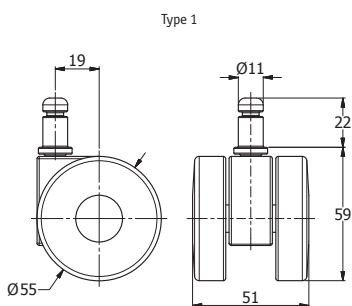
Part Number	Approx Load Capacity (kg)	Standard Pack Quantity
551067	55	100

Black/Silver Furniture Castor

SR 6439

Polyamide Castor

- Black wheel castor with silver centre
- Gripneck or swivel plate fixing
- Ideal for furniture, such as office equipment, beds and sofas



Part Number	Type	Approx Load Capacity (kg)	Standard Pack Quantity
551069	1	55	100
551068	2	55	100

The weight loadings quoted in this catalogue are for guide purposes only and assume that castors are used in a normal operating environment with floors in a smooth and reasonable condition.

Uneven or irregular floors will cause increased shock loadings. Castors of higher load-bearing capacity must be specified in these situations.

Castor loading capacity can be seriously impaired if castors are misused or poorly maintained, e.g. if used outside normal operating temperatures and/or if used in caustic environments.



CHECK OUT OUR
SOLUTIONS FOR
**FURNITURE
AND TRANSIT
PROTECTION**



**DISPLAY
LOCKS**

Pages 415-420



**SPRING
HINGES**

Pages 477-478



**FURNITURE
& DESIGN
CASTORS**

Pages 620-631



**GRIPNECK
FEET**

Pages 689



BUMPERS

Pages 690-703



**METAL
FASTENERS**

Pages 862-869

Call 0845 758 5070

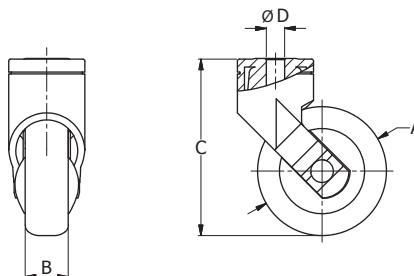
www.essentracomponents.co.uk

Levina Castors

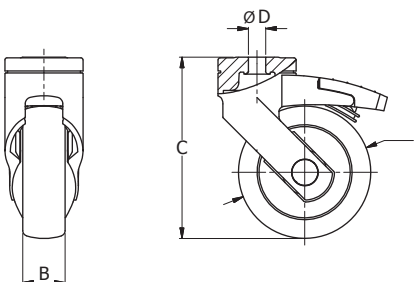
SR 5680

Polypropylene Wheel Centre, Thermoplastic Rubber Tread, RAL7001

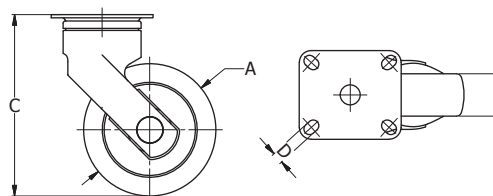
- Non-corrosive synthetic material
- Compliant with standard EN12528
- Non-marking grey rubber tyre – Shore A 87
- Stem fittings for this range can be found on page 631



Type 1 - blind hole mount -requires fitting (p613)



Type 2 - bolt hole fitting



Type 3 - 4 bolt fixed plate fitting

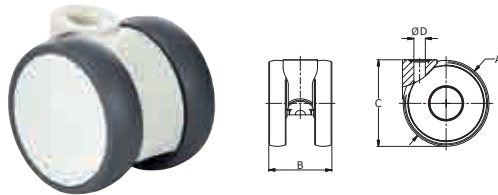
Part Number	Type	Brake	Dimensions (mm)				Dynamic Load Capacity (kg)	Standard Pack Quantity
			A	B	C	D		
1220420	1	No	75	25	103	10	75	40
1220421	1	Yes	75	25	103	10	75	40
1220422	2	No	100	32	137	13	100	20
1220423	2	Yes	100	32	137	13	100	18
1220424	2	No	125	32	161	13	100	15
1220425	2	Yes	125	32	161	13	100	12
1220426	2	No	150	32	190	13	100	8
1220427	2	Yes	150	32	190	13	100	8
1220428	3	No	100	32	137	8.5	100	20
1220429	3	Yes	100	32	137	8.5	100	16
1220430	3	No	125	32	161	8.5	100	15
1220431	3	Yes	125	32	161	8.5	100	12

Linea Castors

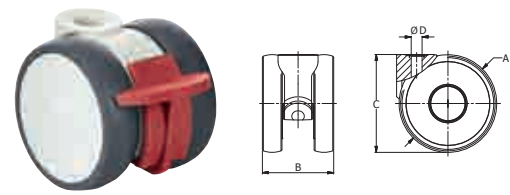
SR 5681

Polyamide Wheel Centre, Polyurethane Tread, RAL7001

- Non-corrosive synthetic material
- Choice of plain or precision ball bearing for easy motion
- Low overall height for a given wheel size
- Blind hole mount – requires mount (page 631)



Type 1 - plain bearing (compliant with EN12528)



Type 2 - precision ball bearing (compliant with EN12530)

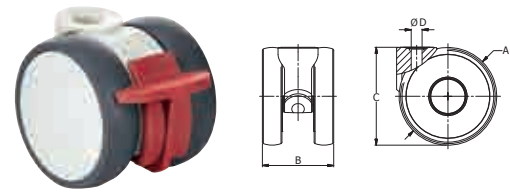
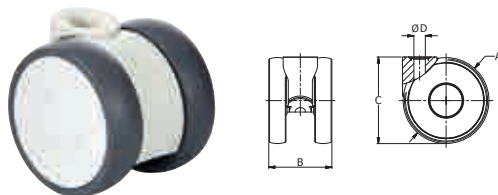
Part Number	Type	Brake	Dimensions (mm)				Dynamic Load Capacity (kg)	Standard Pack Quantity
			A	B	C	D		
1220432	1	No	55	37	57	10	40	100
1220433	1	Yes	55	37	57	10	40	100
1220434	1	No	65	46	68	10	60	100
1220435	1	Yes	65	46	68	10	60	50
1220436	1	No	75	55	75.5	10	80	60
1220437	1	Yes	75	55	75.5	10	80	60
1220438	2	No	100	73	100	11	100	20
1220439	2	Yes	100	73	100	11	100	18

Linea Mini Heavy Duty Castors

SR 5682

Polyamide Wheel Centre, Polyurethane Tread, RAL9002

- Compliant with EN12530
- Precision ball bearing for easy motion
- Outstanding load capacity for a small castor – ideal for low profile applications such as bookshelves and shopfitting
- Blind hole mount – requires mount (page 631)



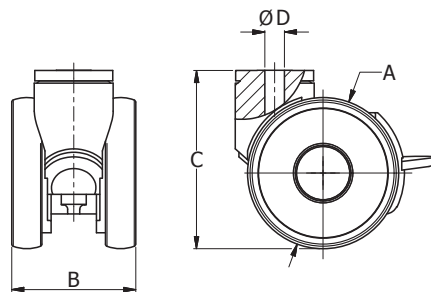
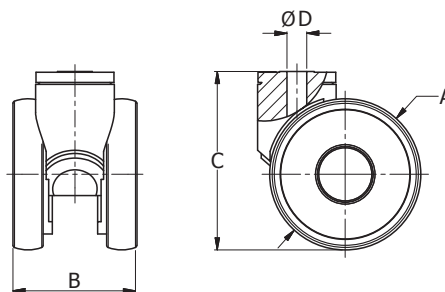
Part Number	Brake	Dimensions (mm)				Dynamic Load Capacity (kg)	Standard Pack Quantity
		A	B	C	D		
1220440	No	50	47.5	50	10	100	120
1220441	Yes	50	47.5	50	10	100	100

Linea Institutional Castors

SR 5683

Polyamide Wheel Centre, Polyurethane Tread, RAL9002

- Compliant with EN12530
- Precision ball bearing for easy motion
- Suitable for constant movement in a professional environment
- Bolt hole fitting
- Stem fittings for this range can be found on page 631



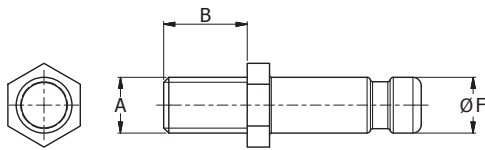
Part Number	Brake	Dimensions (mm)				Dynamic Load Capacity (kg)	Standard Pack Quantity
		A	B	C	D		
1220442	No	75	58	78	10	90	60
1220443	Yes	75	58	78	10	90	50
1220444	No	100	82	118	13	100	18
1220445	Yes	100	82	118	13	100	16
1220446	No	125	82	143	13	110	18
1220447	Yes	125	82	143	13	110	15
1220448	No	150	89	170	13	130	12
1220449	Yes	150	89	170	13	130	12

Stem Fittings

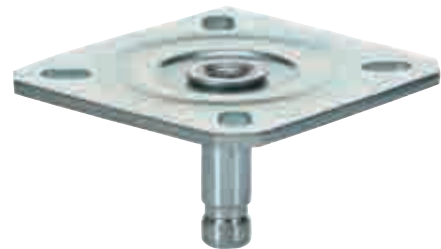
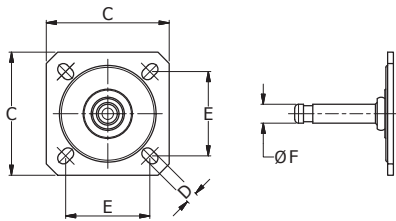
SR 5684

Bright Zinc Plated Steel

- Compatible with castors with blind hole mount
- Choose according to desired attachment method and size of castor mounting hole



Type 1 - threaded stud



Type 2 - plate fitting

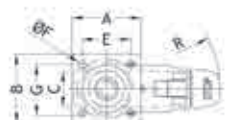
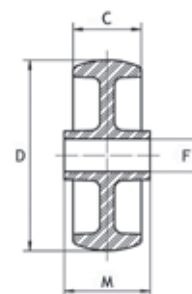
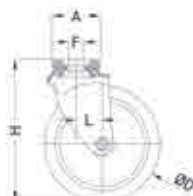
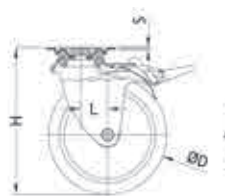
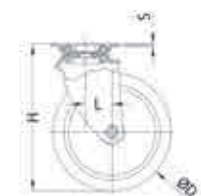
Part Number	Type	Dimensions (mm)						Dynamic Load Capacity (kg)	Standard Pack Quantity
		A	B	C	D	E	F		
1220450	1	M8	15	-	-	-	10	50	20
1220451	1	M10	15	-	-	-	10	80	20
1220452	1	M10	25	-	-	-	10	80	20
1220453	1	M10	25	-	-	-	11	100	20
1220454	1	M12	25	-	-	-	11	100	20
1220455	2	-	-	38	5	27	10	60	20
1220456	2	-	-	65	6	44.5	10	80	20
1220457	2	-	-	65	6	44.5	11	100	20

INDUSTRIAL CASTORS – PLASTIC WHEELS

Castor – Black Polypropylene Wheel

Zinc Plated Steel Housing

- Suitable for light weight medical equipment, display cabinets and point-of-sale applications.
- Choice of fittings



Type 1

Type 2

Type 3

Type 4

Type 5

SR 5646/SR 5647 - Swivel Plate

Part Number	Type	Dimensions (mm)							Approx. Load Capacity (kg)	Standard Pack Quantity
		D	C	A x B	E x G	F	H	L		
494721	1	40	17.5	47 x 47	33 x 33	5.5	62.0	18.5	25	110
494722	1	50	17.0	47 x 47	33 x 33	5.5	67.0	18.5	35	100
494723	1	60	21.5	47 x 47	33 x 33	5.5	79.0	18.5	40	80
494724	1	80	20.0	47 x 47	33 x 33	5.5	99.0	18.0	50	50
494725	2	50	17.0	47 x 47	33 x 33	5.5	67.5	27.0	35	80
494726	2	60	21.5	47 x 47	33 x 33	5.5	79.0	24.5	40	60
494727	2	80	20.0	47x47	33x33	5.5	99.0	23.0	50	40

SR 5648/SR 5649 - Bolt Hole

Part Number	Type	Dimensions (mm)							Approx. Load Capacity (kg)	Standard Pack Quantity
		D	C	A	F	H	L			
494728	3	40	17.5	33.5	10	62.5	18.5	25	125	
494729	3	50	17.0	33.5	10	67.5	18.5	35	110	
494730	3	60	21.5	33.5	10	79.0	18.5	40	80	
494731	3	80	20.0	33.5	10	97.0	18.0	50	50	
494732	4	50	17.0	33.5	10	67.5	27.0	35	90	
494733	4	60	21.5	33.5	10	79.0	24.5	40	60	
494734	4	80	20.0	33.5	10	99.0	23.0	50	40	

SR 5685 - Wheel Only

Part Number	Type	Dimensions (mm)				Approx. Load Capacity	Standard Pack Quantity
		D	C	F	M		
1337481	5	40	18	7-8	22	24.5	120
1337482	5	50	18	7-8	22	35.7	100
1337483	5	60	21.5	8-10	27	40.8	80
1337484	5	80	21.5	8-10	27	50.1	60

Black Polypropylene Twinwheel Castors

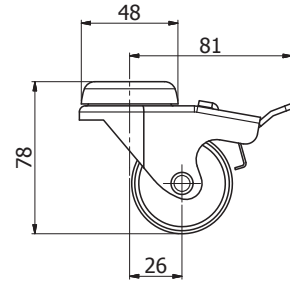
- Ideal for electronic cabinets or shopfitting applications
- For applications where a low level strong castor is required
- Swivel pressed steel housing with double ball race and swivel plate fitting
- Braked and unbraked available
- Zinc plated steel housing



Unbraked



Braked



SR 5627 – Bolt Hole Fitting

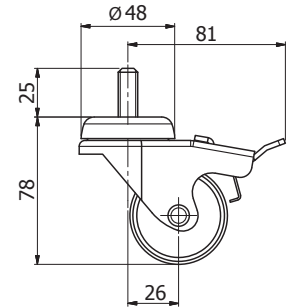
Part Number	Wheel Diameter	Approximate Load Capacity (kg)	Braked	Standard Pack Quantity
491131	50	70	No	40
491132	50	70	Yes	40



Unbraked



Braked



SR 5628 – Threaded Stem

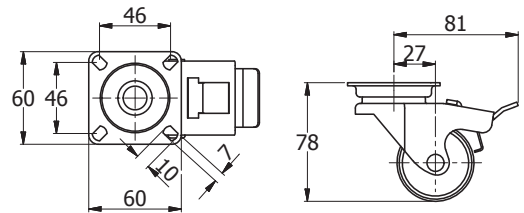
Part Number	Dimensions (mm)		Thread Size	Approximate Load Capacity (kg)	Braked	Standard Pack Quantity
	Wheel Diameter	Thread Length				
491133	50	25	M10	70	No	36
491134	50	25	M10	70	Yes	36



Unbraked



Braked



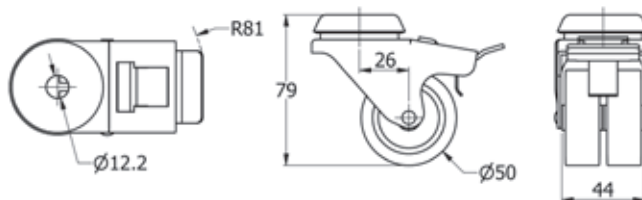
SR 5658 – Swivel Plate Fitting

Part Number	Wheel Diameter	Approximate Load Capacity (kg)	Braked	Standard Pack Quantity
494759	50	70	No	40
494760	50	70	Yes	36

Grey Rubber Twinwheel Castors

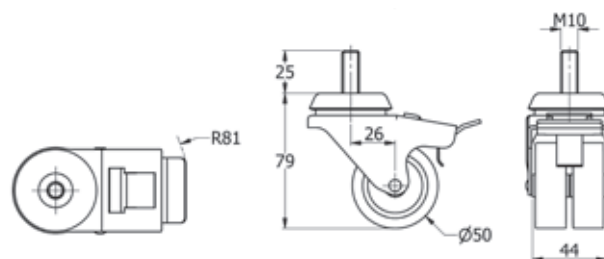
SR 5772

- Grey synthetic rubber tyre
- For applications where a low level strong castor is required
- Swivel pressed steel housing with double ball race and bolt hole fitting
- Braked and unbraked available
- Zinc plated steel housing



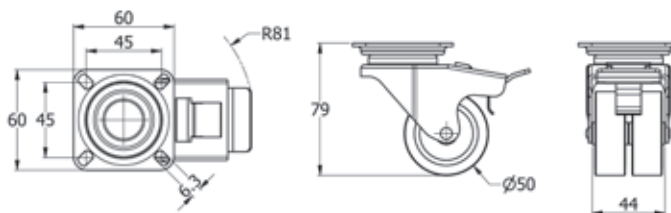
Bolt Hole Fitting

Part Number	Wheel Diameter (mm)	Approx Load Capacity (kg)	Braked	Standard Pack Quantity
499653	50	70	No	48
499654	50	70	Yes	40



Threaded Stem

Part Number	Dimensions (mm)		Thread Size	Approx Load Capacity (kg)	Braked	Standard Pack Quantity
	Wheel Diameter (mm)	Thread Length				
499655	50	25	M10	70	No	44
499656	50	25	M10	70	Yes	32



Swivel Plate Fitting

Part Number	Wheel Diameter (mm)	Approx Load Capacity (kg)	Braked	Standard Pack Quantity
499657	50	70	No	40
499658	50	70	Yes	32

Castor - White Polyamide Wheel

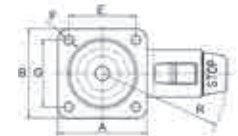
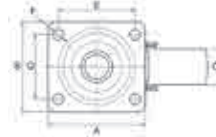
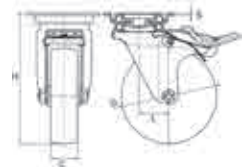
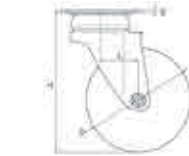
Zinc Plated Steel Housing

- A full range of light to heavy duty castors suitable for use in a variety of applications
- Light duty - suitable for display units, restaurant equipment, trolleys, office and medical equipment
- Medium duty - suitable for trolleys, roll cages and material handling applications
- Heavy duty - suitable for trolleys, lifting equipment and automatic gates
- Good resistance to abrasion, petroleum and chemical agents
- Double ball race on types 1 to 6
- Total stop brake locks wheel and swivel on braked versions



Swivel Plate SR5630/SR5659/SR5623/SR5604/SR5660/SR5624

Part Number	Type	Dimensions (mm)							Approx. Load Capacity (kg)	Standard Pack Quantity
		D	C	A x B	E x G	F	H	R		
491012	1	50	18	60 x 60	45 x 45	6.5	70	-	55	48
491013	1	60	22	60 x 60	45 x 45	6.5	90	-	60	36
491014	1	75	23	60 x 60	45 x 45	6.5	106	-	60	28
491015	1	80	22	60 x 60	45 x 45	6.5	109	-	60	28
491016	1	100	27	76 x 70	60 x 50	8.3	134	-	80	16
491017	1	125	27	76 x 70	60 x 50	8.3	159	-	80	12
494761	1	80	30	95 x 80	80 x 60	9.0	108	-	100	20
494762	1	100	30	95 x 80	80 x 60	9.0	127	-	120	16
494763	1	125	39	95 x 80	80 x 60	9.0	155	-	150	10
499818	1	150	40	98.7 x 80	80 x 60	9.0	184	-	180	6
491121	1	150	42	132 x 110	105 x 80	12.0	188	-	330	4
491122	1	200	50	132 x 110	105 x 80	12.0	243	-	600	2
491018	2	50	18	60 x 60	45 x 45	6.5	70	80	55	48
491019	2	60	22	60 x 60	45 x 45	6.5	90	84	60	36
491020	2	75	23	60 x 60	45 x 45	6.5	106	84	60	28
491021	2	80	22	60 x 60	45 x 45	6.5	109	84	60	28
491022	2	100	27	76 x 70	60 x 50	8.3	134	106	80	16
491023	2	125	27	76 x 70	60 x 50	8.3	159	106	80	12
494765	2	80	30	95 x 80	80 x 60	9.0	108	110	100	16
494766	2	100	30	95 x 80	80 x 60	9.0	127	110	120	14
494767	2	125	39	95 x 80	80 x 60	9.0	155	113	150	8
499819	2	150	40	98.7 x 80	80 x 60	9.0	184	115	180	6
491123	2	150	42	132 x 110	105 x 80	12.0	188	128	330	4
491124	2	200	50	132 x 110	105 x 80	12.0	243	158	600	2

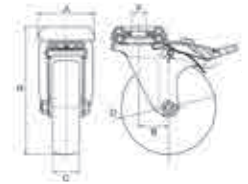
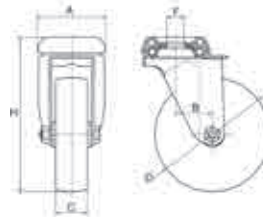


Type 1

Type 2

Bolt Hole SR5600/SR5662

Part Number	Type	Dimensions (mm)							Approx. Load Capacity (kg)	Standard Pack Quantity
		D	C	A	F	H	R			
490995	3	50	18	48	12	70	-	55	48	
490996	3	60	22	48	12	90	-	60	40	
490997	3	75	23	48	12	106	-	60	36	
490998	3	80	22	48	12	109	-	60	36	
490999	3	100	27	57	12	134	-	80	16	
491000	3	125	27	57	12	159	-	80	12	
494773	3	80	30	64	12	108	-	100	20	
494774	3	100	30	64	12	127	-	120	16	
494775	3	125	39	64	12	155	-	120	12	
491001	4	50	18	48	12	70	80	55	48	
491002	4	60	22	48	12	90	84	60	40	
491003	4	75	23	48	12	106	84	60	36	
491004	4	80	23	48	12	109	84	60	36	
491005	4	100	27	57	12	134	106	80	16	
491006	4	125	27	57	12	159	106	80	12	
494776	4	80	30	64	12	108	110	100	16	
494777	4	100	30	64	12	127	110	120	14	
494778	4	125	39	64	12	155	113	120	12	



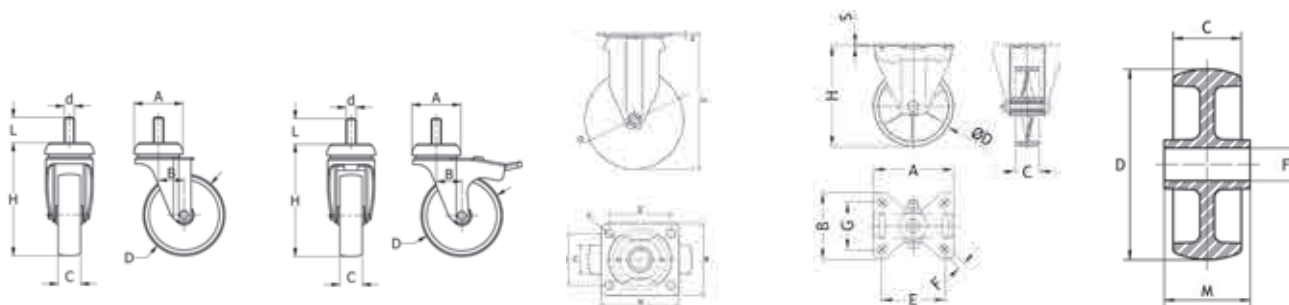
Type 3

Type 4

CONTINUED ON NEXT PAGE

INDUSTRIAL CASTORS – POLYAMIDE WHEELS

Castor – White Polyamide Wheel CONTINUED



Type 5

Type 6

Type 7

Type 8

Type 9

Threaded Stem SR5777/SR5778/SR5783/SR5784

Part Number	Type	Thread Size	Dimensions (mm)			Approx. Load Capacity (kg)	Standard Pack Quantity
			D	C	H		
497935	5	M10 x 25	50	24	70	55	52
497936	5	M10 x 25	60	28	90	60	36
497937	5	M10 x 25	75	28	106	60	32
497938	5	M10 x 25	80	28	109	60	32
497939	5	M12 x 30	100	33	132	80	16
497940	5	M12 x 30	125	33	157	80	12
497967	5	M12 x 28	80	40	108	100	20
497968	5	M12 x 28	100	40	127	120	16
497969	5	M12 x 28	125	44	155	120	12
497941	6	M10 x 25	50	24	70	55	52
497942	6	M10 x 25	60	28	90	60	36
497943	6	M10 x 25	75	28	106	60	32
497944	6	M10 x 25	80	28	109	60	32
497945	6	M12 x 30	100	33	132	80	16
497946	6	M12 x 30	125	33	157	80	12
497970	6	M12 x 28	80	40	108	100	16
497971	6	M12 x 28	100	40	127	120	14
497972	6	M12 x 28	125	44	155	120	12

Fixed Plate SR5602/SR5661/SR5774

Part Number	Type	Dimensions (mm)						Approx. Load Capacity (kg)	Standard Pack Quantity
		D	C	A x B	E x G	F	H		
491007	7	50	18	60 x 60	45 x 45	6.5	70	55	48
491008	7	60	22	60 x 60	45 x 45	6.5	90	60	40
491009	7	75	23	60 x 60	45 x 45	6.5	106	60	36
491010	7	80	22	60 x 60	45 x 45	6.5	109	60	36
491011	7	100	27	76 x 70	60 x 50	8.3	134	80	12
494769	8	80	30	100 x 84	80 x 60	9	108	100	16
494770	8	100	30	100 x 84	80 x 60	9	127	120	12
494771	8	125	39	100 x 84	80 x 60	9	155	150	10
499820	8	150	40	100 x 84	80 x 60	9	184	180	6
499662	8	150	48	135 x 111	105 x 80	11	188	330	4
499663	8	200	60	135 x 114	105 x 80	12.3	240	600	2

SR5629 – Wheel Only

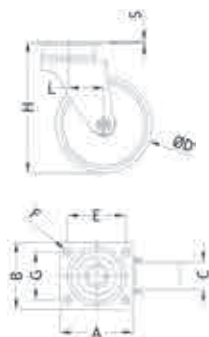
Part Number	Type	Dimensions (mm)				Approx. Load Capacity (kg)	Standard Pack Quantity
		D	C	F	M		
491138	9	50	17	8	21.5	55	48
491139	9	60	22	10	27	60	48
491140	9	75	23	8	28	80	48
491141	9	80	22	10	27	80	48
491142	9	100	27	12	32	90	44
1337480	9	125	27	12	32	122	20

Compatible with SR5600-SR5614 castors
N.B. Styles may vary

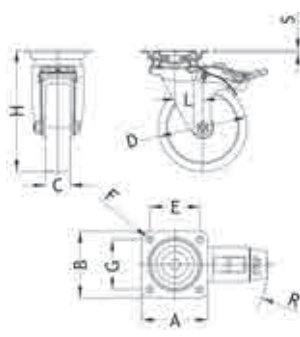
Castor – White Polyamide Wheel

Stainless Steel Housing

- Ideal for catering and medical industries
- Good resistance to corrosion and rust, water and chemicals
- Choice of fittings



Type 1



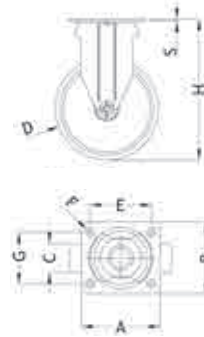
Type 2



Type 3



Type 4



Type 5

SR5632/SR5633 – Swivel Plate

Part Number	Type	Dimensions (mm)							Approx. Load Capacity (kg)	Standard Pack Quantity
		D	C	A x B	E x G	F	H	R		
494473	1	60	22	60 x 60	45 x 45	6.5	90	-	60	40
494474	1	80	22	60 x 60	45 x 45	6.5	109	-	60	36
494475	1	100	27	76 x 70	60 x 50	8.3	134	-	80	16
494476	1	125	27	76 x 70	60 x 50	8.3	159	-	80	12
494477	2	60	22	60 x 60	45 x 45	6.5	90	84	60	40
494478	2	80	22	60 x 60	45 x 45	6.5	109	84	60	36
494479	2	100	27	76 x 70	60 x 50	8.3	134	106	80	16
494480	2	125	27	76 x 70	60 x 50	8.3	159	106	80	12

SR5664 – Fixed Plate

Part Number	Type	Dimensions (mm)							Approx. Load Capacity (kg)	Standard Pack Quantity
		D	C	A x B	E x G	F	H	R		
494814	5	60	22	60 x 60	45 x 45	6.5	90	-	60	40
494815	5	80	22	60 x 60	45 x 45	6.5	109	-	60	36
494816	5	100	27	76 x 70	60 x 50	8.3	134	-	80	12
494817	5	125	27	76 x 70	60 x 50	8.3	159	-	80	10

SR5630/SR5631 – Bolt Hole

Part Number	Type	Dimensions (mm)							Approx. Load Capacity (kg)	Standard Pack Quantity
		D	C	A x B	E x G	F	H	R		
494463	3	60	22	48	12	9	90	-	60	40
494464	3	80	22	48	12	10.9	109	-	60	36
494465	3	100	27	57	12	13.2	132	-	80	16
494466	3	125	27	57	12	15.6	156	-	80	12
494467	4	60	22	48	12	9	90	84	60	40
494468	4	80	22	48	12	10.9	109	84	60	36
494469	4	100	27	57	12	13.2	132	106	80	16
494470	4	125	27	57	12	15.6	156	106	80	12

INDUSTRIAL CASTORS – RUBBER TYRES

Castor – Grey Synthetic Rubber Tyre

Zinc Plated Steel Housing, Plastic Wheel Centre

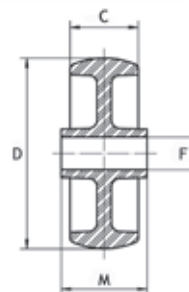
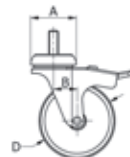
- Suitable for lightweight medical equipment, display cabinets and point-of-sale applications
- Plastic rubber tyre not resistant to contact with greases, oils or chlorides
- Choice of fittings



Type 1



Type 2



Type 3

Type 4

Type 5

Type 6

Type 7

SR5650/SR5651 - Swivel Plate

Part Number	Type	Dimensions (mm)								Approx. Load Capacity (kg)	Standard Pack Quantity
		D	C	A x B	E x G	F	H	L	R		
494735	1	40	18.5	47 x 47	33 x 33	5.5	62	18.5	-	25	100
494736	1	50	18.5	47 x 47	33 x 33	5.5	67	18.5	-	35	95
494737	1	63	21.5	47 x 47	33 x 33	5.5	80	18.5	-	40	70
494738	1	80	22.0	47 x 47	33 x 33	5.5	99	18.0	-	50	40
494739	2	50	18.5	47 x 47	33 x 33	5.5	67.5	27.0	77	35	80
494740	2	63	21.5	47 x 47	33 x 33	5.5	80.5	24.5	77	40	60
494741	2	80	22.0	47 x 47	33 x 33	5.5	99.0	23.0	77	50	40

SR5775/SR5776 - Threaded Stem

Part Number	Type	Thread Size	Dimensions (mm)				Approx. Load Capacity (kg)	Standard Pack Quantity
			D	C	H	B		
497921	5	M10 x 25	40	24	62.5	18.5	25	96
497922	5	M10 x 25	50	24	67.5	18.5	35	92
497923	5	M10 x 25	63	28	80.5	18.5	40	68
497924	5	M10 x 25	80	28	98.0	18.0	50	40
497926	6	M10 x 25	50	24	67.5	27.0	35	72
497927	6	M10 x 25	63	28	80.5	24.5	40	48
497928	6	M10 x 25	80	28	98.0	23.0	50	32

SR5652/SR5653 - Bolt Hole

Part Number	Type	Dimensions (mm)								Approx. Load Capacity (kg)	Standard Pack Quantity
		D	C	A	F	H	L	R			
494742	3	40	18.5	33.5	10	62.5	18.5	-	25	120	
494743	3	50	18.5	33.5	10	67.5	18.5	-	35	100	
494744	3	63	21.5	33.5	10	80.5	18.5	-	40	75	
494745	3	80	22.0	33.5	10	99	18.0	-	50	40	
494746	4	50	18.5	33.5	10	67.5	27.0	77	35	80	
494747	4	63	21.5	33.5	10	80.5	24.5	77	40	60	
494748	4	80	22.0	33.5	10	99.0	23.0	77	50	40	

SR 5686 - Wheel Only

- Hardness: 73 ±3 Shore A

- Temperature: -5°C to 50°C

- Maximum Speed: 3Km/h

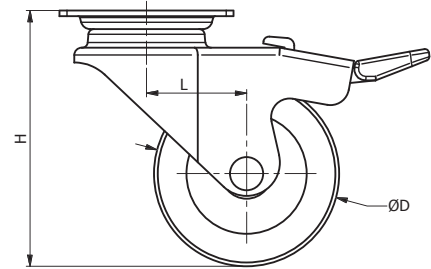
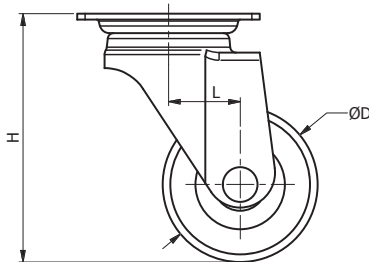
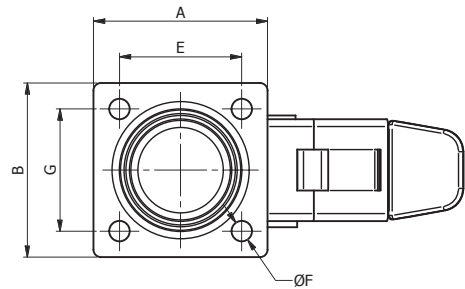
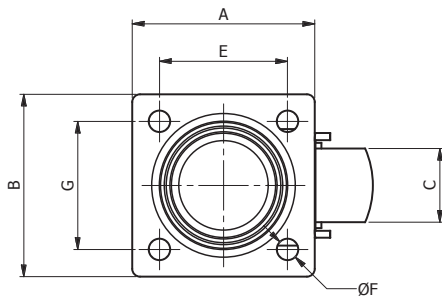
Part Number	Type	Dimensions (mm)				Approx. Load Capacity (kg)	Standard Pack Quantity
		D	C	F	M		
1337474	7	40	18	8	22	25.5	120
1337475	7	50	18	8	22	40.8	100
1337476	7	63	22	10	27	61.2	80
1337477	7	80	22	10	27	61.2	60
1337478	7	100	27	12	32	81.6	32
1337479	7	125	27	12	32	81.6	20

Castor- Blue Soft Polyurethane Wheel

SR 5687

Stainless Steel Housing, Polyamide 6 Centre

- Ideal for medium duty applications such as trolleys for medium loads
- Good resistance to wear, shocks, greases and several petroleum byproducts
- Ambient temperatures: between -10°C and 60°C
- Maximum Speed 4 Km/h
- Blue soft polyurethane tyre with hardness 82 ± 4 Shore D



Type 1

Type 2

Swivel Plate

Part Number	Type	Dimensions (mm)						Approx. Load Capacity (kg)	Standard Pack Quantity
		D	C	A x B	E x G	F	H		
1337458	1	80	28	95 x 80	80 x 60	9	108	71.4	20
1337460	1	100	30	95 x 80	80 x 60	9	127	112.2	16
1337459	2	80	28	95 x 80	80 x 60	9	108	71.4	16
1337461	2	100	30	95 x 80	80 x 60	9	127	112.2	12



GET TO GRIPS
WITH OUR
**HANDLES, KNOBS
AND POSITIONING
COMPONENTS**



**PULL
HANDLES**

Pages 546-560



**FLUSH
HANDLES**

Pages 561-564



**HANDWHEELS
AND KNOBS**

Pages 565-591



**CONTROL
WHEELS**

Pages 592-596



**CLAMPING
HANDLES**

Pages 597-604



**INDEX
PLUNGERS**

Pages 605-613

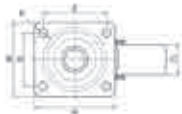
Call 0845 758 5070

www.essentracomponents.co.uk

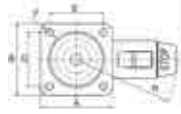
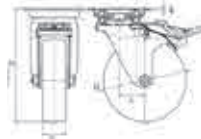
Castor – Grey Natural Rubber Tyre

Zinc Plated Steel Housing, Plastic Wheel Centre

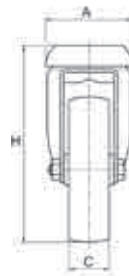
- Suitable for medical equipment, display cabinets, point-of-sale, educational furniture, computer and office furniture
- Natural grey rubber tyre not resistant to contact with greases, oils or chloride
- Double ball race on types 1 to 4
- Threadguards as standard
- Total stop brake locks wheel and swivel on braked versions
- Choice of fittings



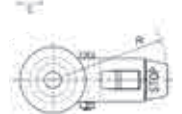
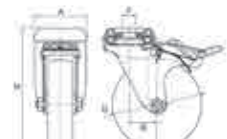
Type 1



Type 2



Type 3



Type 4

SR5608/SR5609 – Swivel Plate

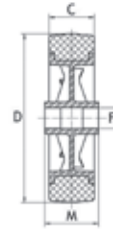
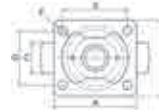
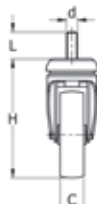
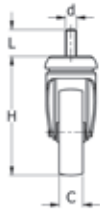
Part Number	Type	Dimensions (mm)							Approx. Load Capacity (kg)	Standard Pack Quantity
		D	C	A x B	E x G	F	H	R		
491035	1	60	20	60 x 60	45 x 45	6.5	90	-	60	36
491036	1	80	22	60 x 60	45 x 45	6.5	109	-	60	32
491037	1	100	28	76 x 70	60 x 50	8.3	134	-	80	16
491038	1	125	28	76 x 70	60 x 50	8.3	159	-	80	12
491039	2	60	20	60 x 60	45 x 45	12	90	84	60	36
491040	2	80	22	60 x 60	45 x 45	12	109	84	60	32
491041	2	100	28	76 x 70	60 x 50	12	134	106	80	16
491042	2	125	28	76 x 70	60 x 50	12	159	106	80	12

SR5605/SR5606 – Bolt Hole

Part Number	Type	Dimensions (mm)							Approx. Load Capacity (kg)	Standard Pack Quantity
		D	C	A	B	F	H	R		
491024	3	60	20	48	26	12	90	-	60	40
491025	3	80	22	48	25	12	109	-	60	32
491026	3	100	28	57	36	12	134	-	80	16
491027	3	125	28	57	35	12	159	-	80	12
491028	4	60	20	48	28	12	90	84	60	40
491029	4	80	22	48	25	12	109	84	60	32
491030	4	100	28	57	35	12	134	106	80	16
491031	4	125	28	57	33	12	159	106	80	14

INDUSTRIAL CASTORS – RUBBER TYRES

Castor – Grey Natural Rubber Tyre *CONTINUED*



Type 5

Type 6

Type 7

Type 8

SR5779/SR5780 – Threaded Stem

Part Number	Type	Thread Size	Dimensions (mm)				Approx. Load Capacity (kg)	Standard Pack Quantity
			D	C	H	B		
497947	5	10 x 25	60	20	90	26	60	36
497948	5	10 x 25	80	22	109	25	60	32
497949	5	12 x 30	100	28	132	36	80	16
497950	5	12 x 30	125	28	157	35	80	12
497951	6	10 x 25	60	20	90	26	60	36
497952	6	10 x 25	80	22	109	25	60	32
497953	6	12 x 30	100	28	132	36	80	16
497954	6	12 x 30	125	28	157	35	80	12

SR5629 – Wheel Only

Part Number	Type	Dimensions (mm)				Approx. Load Capacity (kg)	Standard Pack Quantity
		D	C	F	M		
491143	8	60	20	10	27	60	48
491144	8	80	22	10	27	60	48
491145	8	100	28	12	32	80	40

Compatible with SR5600–SR5614 castors

SR5607 – Fixed Plate

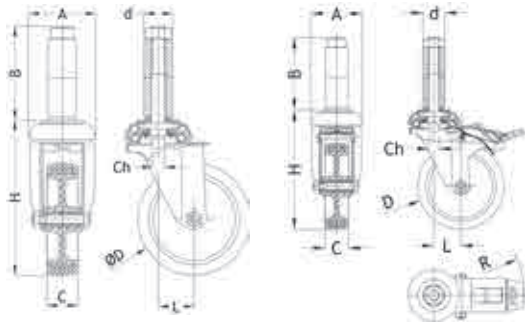
Part Number	Type	Dimensions (mm)							Approx. Load Capacity (kg)	Standard Pack Quantity
		D	C	A x B	E x G	F	H			
491032	7	60	20	60 x 60	45 x 45	6.5	90	60	40	
491033	7	80	22	60 x 60	45 x 45	6.5	109	60	32	
491034	7	100	28	76 x 70	60 x 50	8.3	134	80	16	

Castor - Grey Rubber Tyre Fitting

SR 5634/SR 5635

Zinc Plated Housing, Plastic Wheel Centre

- Expander fitting allows castors to be fitted into a hollow tube
- Swivel plate
- Provides secure fitting to all popular sizes of round and square tubing
- Supplied fully assembled



Type 1



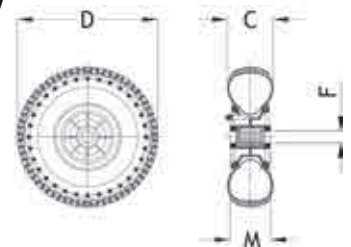
Type 2

Part Number	Type	Dimensions (mm)									To Fit Tube Size (mm)	Shape	Approximate Load Capacity (kg)	Standard Pack Quantity
		D	A	B	C	H	L	R	CH					
494451	1	80	48	67	22	111	25	-	9	19-22	Round	60	30	
494452	1	80	48	68	22	111	25	-	9	21-23	Round	60	30	
494453	1	80	48	69	22	111	25	-	9	17 x 17-19 x 19	Square	60	30	
494454	1	80	48	70	22	111	25	-	9	22 x 22-24 x 24	Square	60	30	
494455	1	100	57	71	27	136	36	-	9	19-22	Round	80	16	
494456	1	100	57	72	27	136	36	-	9	21-23	Round	80	16	
494457	1	100	57	73	27	136	36	-	9	17 x 17-19 x 19	Square	80	16	
494458	1	100	57	74	27	136	36	-	9	22 x 22-24 x 24	Square	80	16	
494491	2	80	48	75	22	111	25	84	9	19-22	Round	60	28	
494492	2	80	48	76	22	111	25	84	9	21-23	Round	60	28	
494493	2	80	48	77	22	111	25	84	9	17 x 17-19 x 19	Square	60	28	
494494	2	80	48	78	22	111	25	84	9	22 x 22-24 x 24	Square	60	28	
494495	2	100	57	79	27	136	36	106	9	19-22	Round	80	14	
494496	2	100	57	80	27	136	36	106	9	21-23	Round	80	14	
494497	2	100	57	81	27	136	36	106	9	17 x 17-19 x 19	Square	80	14	
494498	2	100	57	82	27	136	36	106	9	22 x 22-24 x 24	Square	80	14	

Wheel – Black Rubber Tyre

SR 5629

Plastic Centre – Plain or Roller Bearing



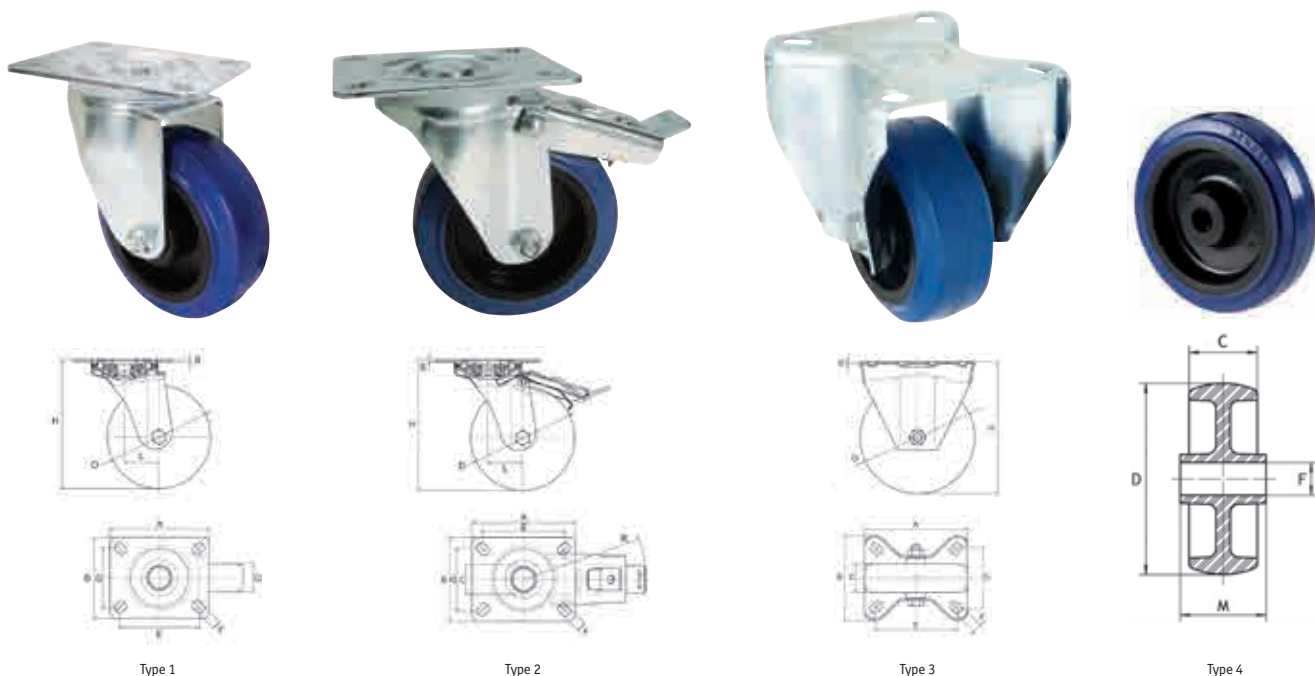
Part Number	Dimensions (mm)				Pressure Max. Bar	Style	Standard Pack Quantity
	D	C	F	M			
494781	85	260	20	75	2.0	Plain Bearing	2
494782	50	200	20	59	1.8	Roller Bearing	6
494783	85	260	20	75	2.0	Roller Bearing	2

Castor – Blue Natural Rubber Tyre

SR 5688

Zinc Plated Steel Housing, Plastic Wheel Centre

- Suitable for transport cases, catering equipment, flight cases, trolleys
- Non marking blue rubber tyre not resistant to contact with greases, oils and chloride
- Total stop brake locks wheel and swivel on braked versions
- Double ball race on types 1 and 2
- Choice of fittings



SR5621/SR5622 - Swivel Plate

Part Number	Type	Dimensions (mm)							Approx. Load Capacity (kg)	Standard Pack Quantity
		D	C	A x B	E x G	F	H	R		
491115	1	80	36	99 x 80	80 x 60	9	108	-	150	12
491116	1	100	36	99 x 80	80 x 60	9	127	-	150	12
491117	1	125	36	99 x 80	80 x 60	9	160	-	160	8
491118	2	80	36	99 x 80	80 x 60	9	108	116	150	12
491119	2	100	36	99 x 80	80 x 60	9	127	116	150	12
491120	2	125	36	99 x 80	80 x 60	9	160	130	200	8

SR5773 - Fixed Plate

Part Number	Type	Dimensions (mm)						Approx. Load Capacity (kg)	Standard Pack Quantity
		D	C	A x B	E x G	F	H		
499659	3	80	40	100 x 84	80 x 60	9	108	150	16
499660	3	100	40	100 x 84	80 x 60	9	127	150	12
499661	3	125	44	100 x 84	80 x 60	9	155	200	8

SR5688 - Wheel Only

- Hardness 70 ±3 Sh. A.

- Temperature: -20°C to 50°C

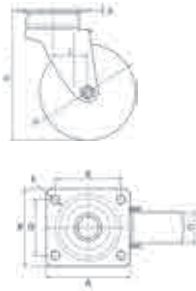
- Maximum Speed: 4 Km/h

Part Number	Type	Dimensions (mm)				Approx. Load Capacity (kg)	Standard Pack Quantity
		D	C	F	M		
1337471	4	80	36	12	40	152.3	48
1337472	4	100	36	12	40	152.3	36
1337473	4	125	36	15	45	203.1	20

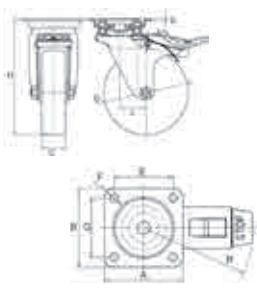
Castors – Dark Grey Synthetic Rubber Tyre

Zinc Plated Steel Housing, Plastic Wheel Centre

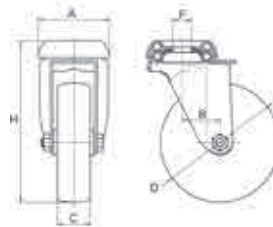
- Suitable for medical equipment, display cabinets, point-of-sale, educational furniture, computer and office furniture
- Thermoplastic rubber tyre not resistant to contact with greases, oils or chloride
- Double ball race on types 1 to 6
- Total stop brake locks wheel and swivel on braked versions
- Non-marking rubber - Shore A 93 hardness



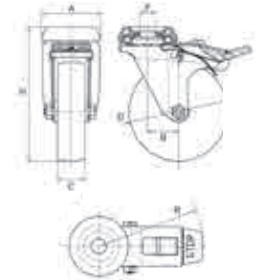
Type 1



Type 2



Type 3



Type 4

SR5613/SR5614 – Swivel Plate

Part Number	Type	Dimensions (mm)							Approx. Load Capacity (kg)	Standard Pack Quantity
		D	C	A x B	E x G	F	H	R		
491060	1	50	18	60 x 60	45 x 45	6.5	70	-	40	52
491061	1	63	22	60 x 60	45 x 45	6.5	90	-	60	40
491062	1	75	24	60 x 60	45 x 45	6.5	106	-	60	32
491063	1	80	22	60 x 60	45 x 45	6.5	109	-	60	32
491064	1	100	27	76 x 70	60 x 50	8.3	134	-	80	16
491065	1	125	27	76 x 70	60 x 50	8.3	159	-	80	12
491066	2	50	18	60 x 60	45 x 45	6.5	70	80	40	52
491067	2	63	22	60 x 60	45 x 45	6.5	90	84	60	40
491068	2	75	24	60 x 60	45 x 45	6.5	106	84	60	32
491069	2	80	22	60 x 60	45 x 45	6.5	109	84	60	32
491070	2	100	27	76 x 70	60 x 50	8.3	134	106	80	16
491071	2	125	27	76 x 70	60 x 50	8.3	159	106	80	12

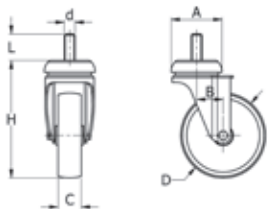
SR5610/SR5611 – Bolt Hole

Part Number	Type	Dimensions (mm)							Approx. Load Capacity (kg)	Standard Pack Quantity
		D	C	A	B	F	H	R		
491043	3	50	18	48	26	12	70	-	40	52
491044	3	63	22	48	26	12	90	-	60	40
491045	3	75	24	48	25	12	106	-	60	32
491046	3	80	22	48	25	12	109	-	60	32
491047	3	100	27	57	36	12	134	-	80	16
491048	3	125	27	57	35	12	159	-	80	16
491049	4	50	18	48	26	12	70	80	40	52
491050	4	63	22	48	28	12	90	84	60	40
491051	4	75	24	48	25	12	106	51	60	32
491052	4	80	22	48	25	12	109	84	60	32
491053	4	100	27	57	35	12	134	106	80	16
491054	4	125	27	57	33	12	159	106	80	16

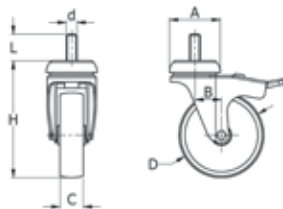
CONTINUED ON NEXT PAGE

INDUSTRIAL CASTORS – RUBBER TYRES

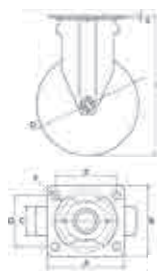
Castors – Dark Grey Synthetic Rubber Tyre CONTINUED



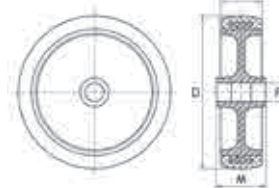
Type 5



Type 6



Type 7



Type 8

SR5781/SR5782 – Threaded Stem

Part Number	Type	Thread Size	Dimensions (mm)				Approx. Load Capacity (kg)	Standard Pack Quantity
			D	C	H	B		
497955	5	M10 x 25	50	24	70.0	26	40	52
497956	5	M10 x 25	63	28	91.5	26	60	36
497957	5	M10 x 25	75	28	106.0	25	60	32
497958	5	M10 x 25	80	28	109.0	25	60	32
497959	5	M12 x 30	100	33	132.0	36	80	16
497960	5	M12 x 30	125	33	157.0	35	80	12
497961	6	M10 x 25	50	24	70.0	26	40	52
497962	6	M10 x 25	63	28	91.5	28	60	36
497963	6	M10 x 25	75	28	106.0	25	60	32
497964	6	M10 x 25	80	28	109.0	25	60	32
497965	6	M12 x 30	100	33	132.0	35	80	16
497966	6	M12 x 30	125	33	157.0	33	80	12

SR5612 – Fixed Plate

Part Number	Type	Dimensions (mm)						Approx. Load Capacity (kg)	Standard Pack Quantity
		D	C	A x B	E x G	F	H		
491055	7	50	18	60 x 60	45 x 45	6.5	70	40	52
491056	7	63	22	60 x 60	45 x 45	6.5	90	60	40
491057	7	75	24	60 x 60	45 x 45	6.5	106	60	32
491058	7	80	22	60 x 60	45 x 45	6.5	109	60	32
491059	7	100	27	76 x 70	60 x 50	8.3	134	80	16

SR5629 – Wheel Only

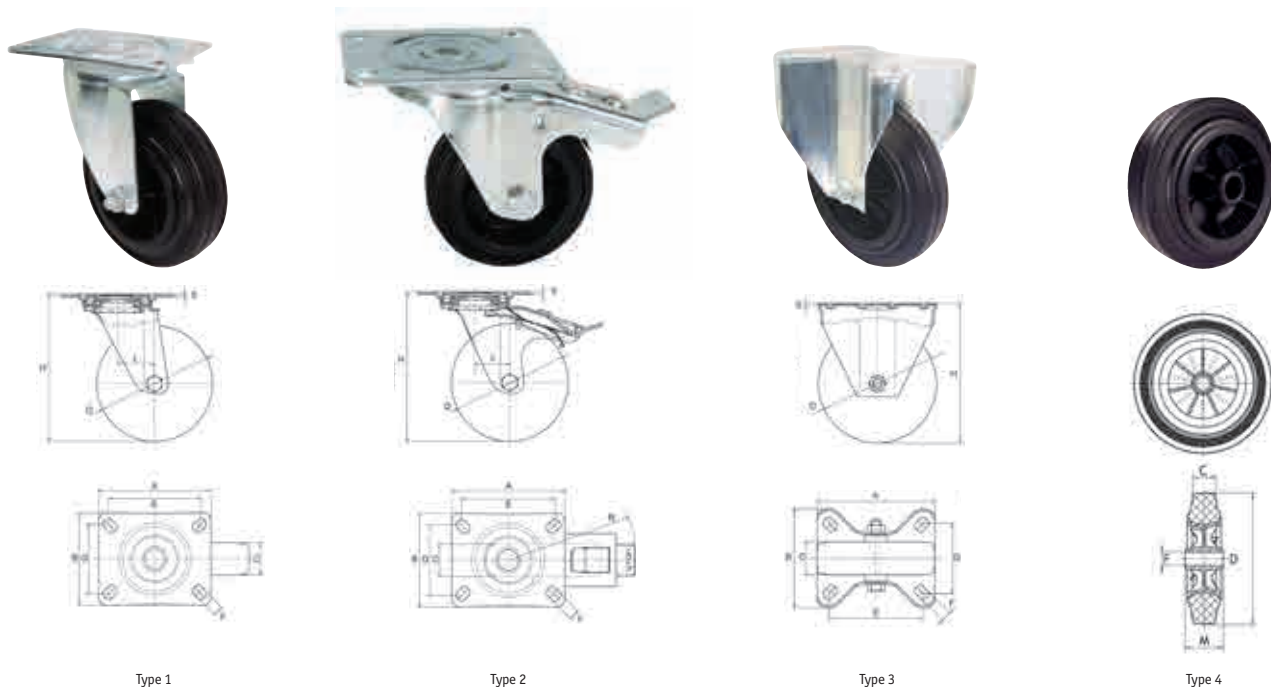
Part Number	Type	Dimensions (mm)				Approx. Load Capacity (kg)	Standard Pack Quantity
		D	C	F	M		
491149	8	50	19	8	22	40	68
491150	8	63	22	10	27	60	48
491151	8	75	24	8	27	60	48
491152	8	80	22	10	27	60	48
491153	8	100	27	12	32	80	48

Compatible with SR5600-SR5614 castors

Castor – Black Natural Rubber Tyre

Zinc Plated Steel Housing, Plastic Wheel Centre

- Suitable for heavier duty applications such as trolleys, cabinets, waste equipment and workstations
- Black rubber tyre not resistant to grease, oils, chlorides and solvents
- Total stop brake locks wheel and swivel on braked versions
- Choice of fittings



SR5616/SR5617 – Swivel Plate

Part Number	Type	Dimensions (mm)							Approx. Load Capacity (kg)	Standard Pack Quantity
		D	C	A x B	E x G	F	H	R		
491080	1	80	25.0	97 x 80	80 x 60	9	108	-	50	16
491081	1	100	30.0	97 x 80	80 x 60	9	127	-	70	12
491082	1	125	38.0	97 x 80	80 x 60	9	155	-	100	12
499815	1	150	40.0	98.7 x 80	80 x 60	9	184	-	130	6
491083	1	150	40.0	133 x 106	105 x 80	11	192	-	140	6
491085	1	180	45.0	129 x 106	105 x 80	11	230	-	170	4
491086	1	200	50.0	129 x 106	105 x 80	11	240	-	205	2
491087	2	80	25.0	97 x 80	80 x 60	9	108	110	50	16
491088	2	100	30.0	97 x 80	80 x 60	9	127	110	70	12
491089	2	125	37.5	97 x 80	80 x 60	9	155	113	100	10
499816	2	150	40.0	98.7 x 80	80 x 60	9	184	115	130	6
491090	2	150	40.0	133 x 106	105 x 80	11	185	150	140	4
491092	2	180	45.0	129 x 106	105 x 80	11	230	150	170	2
491093	2	200	50.0	129 x 106	105 x 80	11	240	150	205	2

SR5615 – Fixed Plate

Part Number	Type	Dimensions (mm)						Approx. Load Capacity (kg)	Standard Pack Quantity
		D	C	A x B	E x G	F	H		
491072	3	80	25.0	100 x 84	80 x 60	9	108	50	16
491073	3	100	30.0	100 x 84	80 x 60	9	127	70	12
491074	3	125	37.5	100 x 84	80 x 60	9	155	100	8
491075	3	150	40.0	116 x 84	80 x 60	9	183	130	6
499817	3	150	40.0	100 x 84	80 x 60	9	184	140	6
491078	3	180	45.0	135 x 110	105 x 80	11	230	170	2
491079	3	200	50.0	135 x 110	105 x 80	11	240	205	2

SR5629 – Wheel Only

Part Number	Type	Dimensions (mm)				Approx. Load Capacity (kg)	Standard Pack Quantity
		D	C	F	M		
491146	4	80	25.0	12	39	50	48
491147	4	100	30.0	12	39	70	36
491148	4	125	37.5	15	44	100	20

Compatible with SR5615 - SR5620 castors

INDUSTRIAL CASTORS – RUBBER TYRES

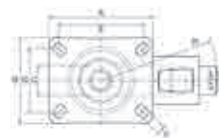
Castor – Black Natural Rubber Tyre

Zinc Plated Steel Housing and Wheel Centre

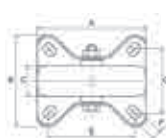
- Suitable for heavier duty applications such as trolleys, cabinets, waste equipment and workstations
- Black rubber tyre not resistant to grease, oils, chlorides and solvents
- Total stop brake locks wheel and swivel on braked versions
- Roller bearing for smooth motion
- Choice of fittings



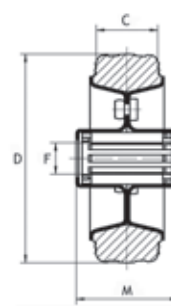
Type 1



Type 2



Type 3



Type 4

SR5619/SR5620 – Swivel Plate

Part Number	Type	Dimensions (mm)							Approx. Load Capacity (kg)	Std Pack Qty
		D	C	A x B	E x G	F	H	R		
491101	1	80	25.0	97 x 80	80 x 60	9	108	-	50	16
491102	1	100	30.0	97 x 80	80 x 60	9	127	-	70	12
491103	1	125	37.5	97 x 80	80 x 60	9	155	-	110	12
499812	1	150	40.0	98.7 x 80	80 x 60	9	184	-	140	6
491104	1	150	40.0	133 x 106	105 x 80	11	184	-	150	6
491106	1	180	45.0	129 x 106	105 x 80	11	230	-	180	4
491107	1	200	50.0	129 x 106	105 x 80	11	240	-	220	2
491108	2	80	25.0	97 x 80	80 x 60	9	108	110	50	16
491109	2	100	30.0	97 x 80	80 x 60	9	127	110	70	12
491110	2	125	37.5	97 x 80	80 x 60	9	155	113	110	10
499813	2	150	40.0	98.7 x 80	80 x 60	9	184	115	140	2
491111	2	150	40.0	133 x 106	105 x 80	11	184	150	150	4
491113	2	180	45.0	129 x 106	105 x 80	11	230	150	150	4
491114	2	200	50.0	129 x 106	105 x 80	11	240	150	220	2

SR5618 – Fixed Plate

Part Number	Type	Dimensions (mm)						Approx. Load Capacity (kg)	Std Pack Qty
		D	C	A x B	E x G	F	H		
491094	3	80	25.0	100 x 84	80 x 60	9.0	108	50	16
491095	3	100	30.0	100 x 84	80 x 60	9.0	127	70	14
491096	3	125	37.5	116 x 84	80 x 60	9.0	160	110	12
499814	3	150	40.0	100 x 84	80 x 60	9.0	184	150	6
491097	3	150	40.0	135 x 110	105 x 80	11.0	184	150	6
491099	3	180	45.0	135 x 110	105 x 80	11.0	230	180	2
491100	3	200	50.0	135 x 110	105 x 80	11.0	240	220	2

SR5629 – Wheel Only

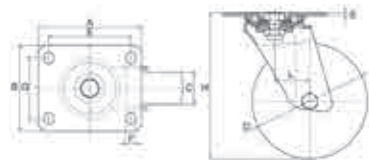
Part Number	Type	Dimensions (mm)				Approx. Load Capacity (kg)	Std Pack Qty
		D	C	F	M		
491135	4	80	25.0	12	39	50	48
491136	4	100	30.0	12	39	70	36
491137	4	125	37.5	15	44	110	20

Compatible with SR5615-SR5620 castors

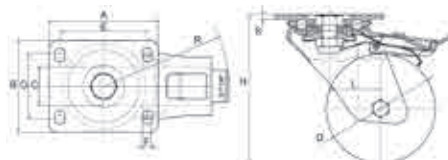
Castor - Red Polyurethane Tyre

Zinc Plated Steel Housing, Cast Iron Wheel Centre

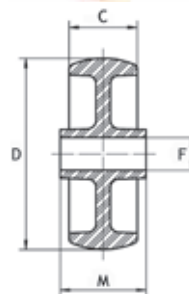
- Ideal for heavy-duty applications such as trolleys, lifting equipment and automatic gates
- Good resistance to wear, greases and petroleum byproducts
- Double ball race crown
- Ball bearings for smooth motion
- Total stop brake locks wheel and swivel



Type 1



Type 2



Type 3

SR5625/SR5626 – Swivel Plate

Part Number	Type	Dimensions (mm)						Approx. Load Capacity (kg)	Standard Pack Quantity
		D	C	A x B	E x G	F	H		
494784	1	80	25	100 x 84	80 x 60	9	125	160	7
494785	1	100	30	100 x 84	80 x 60	9	135	225	6
494786	1	125	30	100 x 84	80 x 60	9	161	300	5
491125	1	150	40	132 x 110	105 x 80	12	188	400	2
491126	1	175	40	132 x 110	105 x 80	12	230	650	2
491127	1	200	50	132 x 110	105 x 80	12	243	700	2
494787	2	80	25	100 x 84	80 x 60	9	125	160	6
494788	2	100	30	100 x 84	80 x 60	9	135	225	5
494789	2	125	30	100 x 84	80 x 60	9	161	300	4
491128	2	150	40	132 x 110	105 x 80	12	188	400	2
491129	2	175	40	132 x 110	105 x 80	12	230	650	2
491130	2	200	50	132 x 110	105 x 80	12	243	700	2

SR5689 – Wheel Only

- Hardness: 92 ±2 Sh. A.
- Temperature: -20°C to 50°C
- Maximum Speed: 4 Km/h

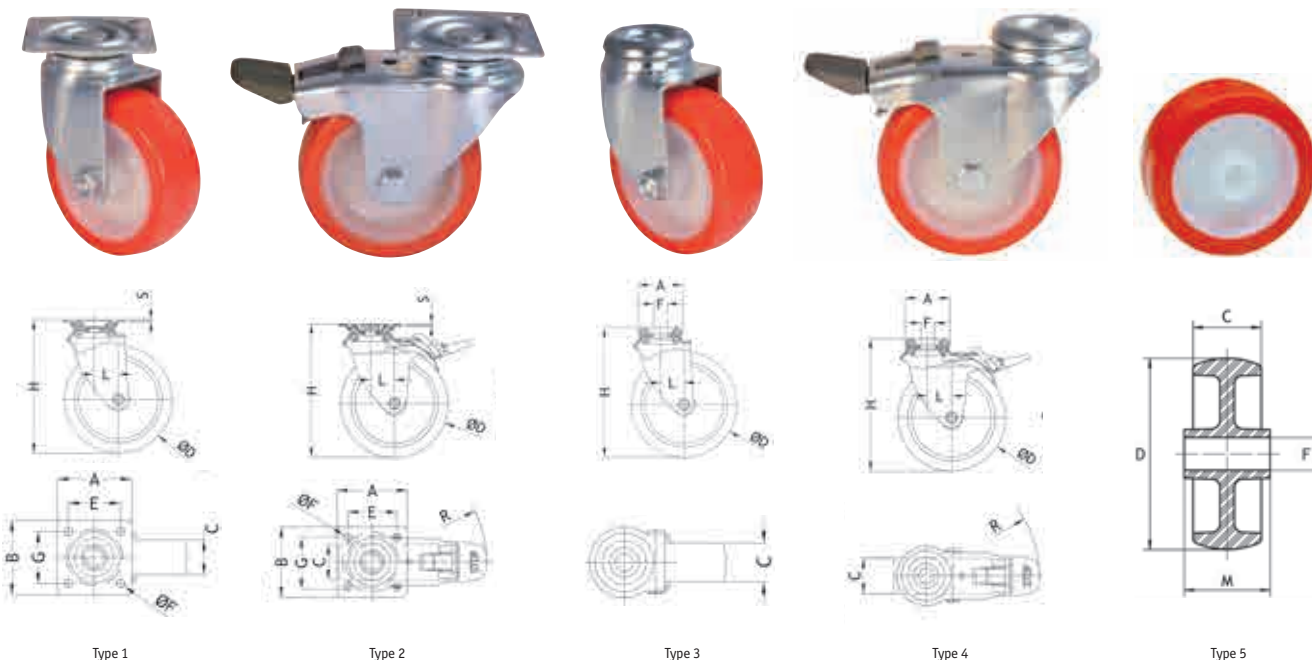
Part Number	Type	Dimensions (mm)				Approx. Load Capacity (kg)	Standard Pack Quantity
		D	C	F	M		
1337465	3	80	25	15	25	163.1	20
1337466	3	100	30	15	30	229.4	16
1337467	3	125	30	15	35	305.9	8
1337468	3	150	40	17	40	458.9	4
1337469	3	175	40	40	40	662.8	4
1337470	3	200	50	60	60	968.7	2

INDUSTRIAL CASTORS – PU TYRES

Castor – Red Polyurethane Tyre

Zinc Plated Steel Housing, Plastic Wheel Centre

- Suitable for light weight medical equipment, display cabinets and point-of-sale applications
- Good resistance to wear, greases and petroleum by-products
- Choice of fittings



SR5654/SR5655 – Swivel Plate

Part Number	Type	Dimensions (mm)							Approx. Load Capacity (kg)	Standard Pack Quantity
		D	C	A x B	E x G	F	H	L		
494749	1	40	18.5	47 x 47	33 x 33	5.5	62.5	18.5	25	90
494750	1	50	18.5	47 x 47	33 x 33	5.5	67.5	18.5	35	80
494751	1	63	21.5	47 x 47	33 x 33	5.5	80.5	18.5	40	60
494752	2	50	18.5	47 x 47	33 x 33	5.5	67.5	27.0	35	68
494753	2	63	21.5	47 x 47	33 x 33	5.5	80.5	24.5	40	52

SR5656/SR5657 – Bolt Hole

Part Number	Type	Dimensions (mm)						Approx. Load Capacity (kg)	Standard Pack Quantity
		D	C	A	F	H	L		
494754	3	40	17.5	33.5	10	62.5	18.5	25	110
494755	3	50	17.0	33.5	10	67.5	18.5	35	100
494756	3	63	21.5	33.5	10	80.5	18.5	40	75
494757	4	50	18.5	33.5	10	67.5	27.0	35	80
494758	4	63	21.5	33.5	10	80.5	24.5	40	60

SR5690 – Wheel Only

- Polyamide 6 centre and red (RAL 3020) thermoplastic Polyurethane tyre

Part Number	Type	Dimensions (mm)				Approx. Load Capacity (kg)	Standard Pack Quantity
		D	C	F	M		
1337462	5	40	18	7	22	50.1	120
1337463	5	50	18	7-8	22	56.1	100
1337464	5	63	22	10	27	61.2	80

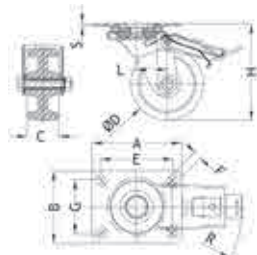
Castor – Phenolic Wheel

Stainless Steel Housing

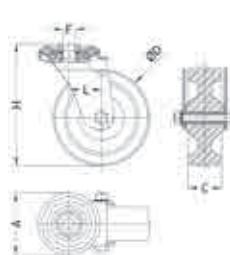
- Stainless steel housing resistant to corrosion and rust
- Suitable for high temperature operating environments (up to 260°C)
- Ideal for powder coating, bakery ovens and other applications where resistance to temperatures is required
- Good resistance to water and chemicals



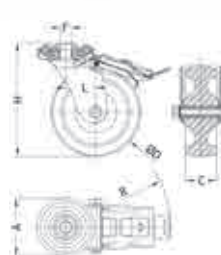
Type 1



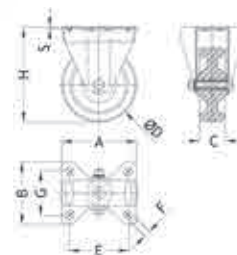
Type 2



Type 3



Type 4



Type 5

SR5641/SR5642 – Swivel Plate

Part Number	Type	Dimensions (mm)							Approx. Load Capacity (kg)	Standard Pack Quantity
		D	C	A x B	E x G	F	H	R		
494711	1	80	35	95 x 80	80 x 60	9	108	-	100	18
494712	1	100	35	95 x 80	80 x 60	9	127	-	150	14
494713	2	80	35	95 x 80	80 x 60	9	108	110	100	16
494714	2	100	35	95 x 80	80 x 60	9	127	110	150	14

SR5643/SR5644 – Bolt Hole

Part Number	Type	Dimensions (mm)							Approx. Load Capacity (kg)	Standard Pack Quantity
		D	C	A	F	H	R			
494715	3	80	35	64	12	108	-	100	20	
494716	3	100	35	64	12	127	-	120	16	
494717	4	80	35	64	12	108	110	100	16	
494718	4	100	35	64	12	127	110	120	12	

SR5645 – Fixed Plate

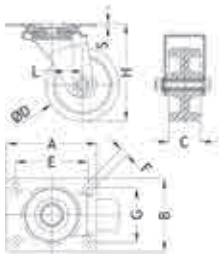
Part Number	Type	Dimensions (mm)							Approx. Load Capacity (kg)	Standard Pack Quantity
		D	C	A x B	E x G	F	H			
494719	5	80	35	100 x 85	80 x 60	9	108	100	16	
494720	5	100	35	100 x 85	80 x 60	9	127	150	12	

INDUSTRIAL CASTORS – PHENOLIC WHEELS

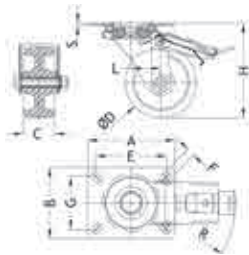
Castor – Phenolic Wheel

Zinc Plated Steel Housing

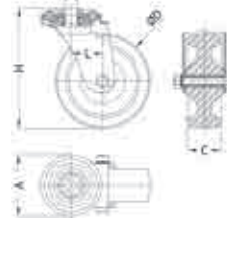
- Suitable for high temperature operating environments (up to 260°C)
- Ideal for powder coating, bakery ovens and other applications where resistance to temperatures is required
- Good resistance to water and chemicals



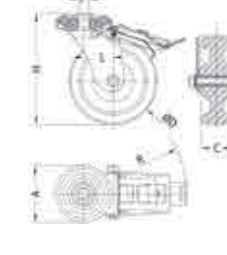
Type 1



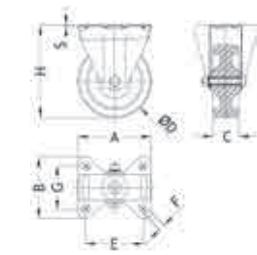
Type 2



Type 3



Type 4



Type 5

SR5636/SR5637 - Swivel Plate

Part Number	Type	Dimensions (mm)							Approx. Load Capacity (kg)	Standard Pack Quantity
		D	C	A x B	E x G	F	H	R		
494701	1	80	35	100 x 80	80 x 60	9	108	-	100	18
494702	1	100	35	100 x 80	80 x 60	9	127	-	150	14
494703	2	80	35	100 x 80	80 x 60	9	108	116	100	14
494704	2	100	35	100 x 80	80 x 60	9	127	116	150	12

SR5638/SR5639 - Bolt Hole

Part Number	Type	Dimensions (mm)							Approx. Load Capacity (kg)	Standard Pack Quantity
		D	C	A	F	H	R			
494705	3	80	35	65	12	108	-	100	20	
494706	3	100	35	65	12	127	-	120	16	
494707	4	80	35	65	12	108	116	100	16	
494708	4	100	35	65	12	127	116	120	12	

SR5640 - Fixed Plate

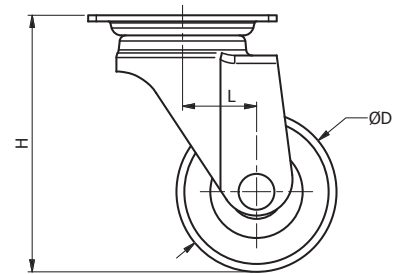
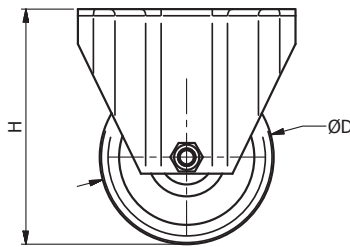
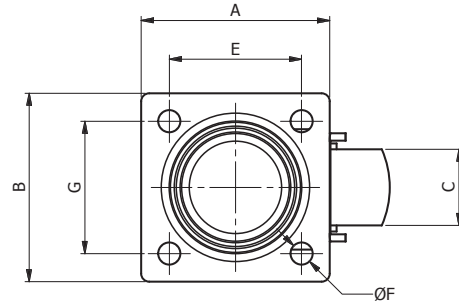
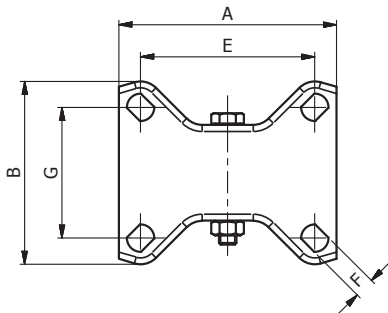
Part Number	Type	Dimensions (mm)							Approx. Load Capacity (kg)	Standard Pack Quantity
		D	C	A x B	E x G	F	H			
494709	5	80	35	100 x 85	80 x 60	9	108	100	16	
494710	5	100	35	100 x 85	80 x 60	9	127	150	12	

Castor – Black Thermoplastic Wheel

SR5691

Zinc or Stainless Steel Housing

- Ideal for High temperature applications and light loads
- Good resistance to damp, several petroleum byproducts and chemical agents
- Ambient temperatures: between -25°C and 260°C
- Low resistance to abrasion



Swivel Plate

Part Number	Type	Dimensions (mm)						Approx. Load Capacity (kg)	Standard Pack Quantity
		D	C	A x B	E x G	F	H		
1337450	1	80	45	100 x 80	80 x 60	9	108	101.8	16
1337452	1	100	50	100 x 80	80 x 60	9	127	152.9	12

Fixed Plate

Part Number	Type	Dimensions (mm)						Approx. Load Capacity (kg)	Standard Pack Quantity
		D	C	A x B	E x G	F	H		
1337451	2	80	45	100 x 84	80 x 60	9	108	101.8	16
1337453	2	100	50	100 x 84	80 x 60	9	127	152.9	12



OUR FULL RANGE OF ACCESS SOLUTIONS PRODUCTS

Request our Access Solutions Catalogue today



LOCKS



ROD LATCH
SYSTEMS



COMPRESSION
LOCKS



GASKETING



HINGES

Call 0845 758 5070

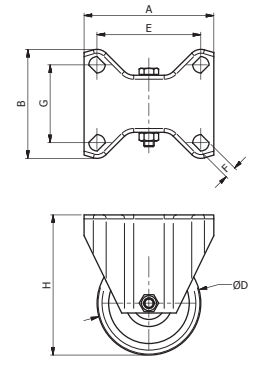
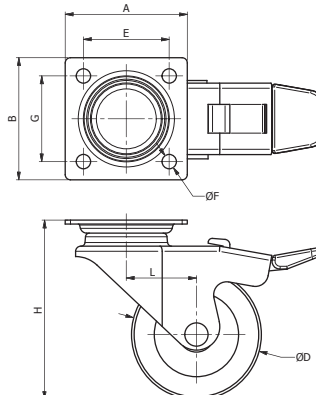
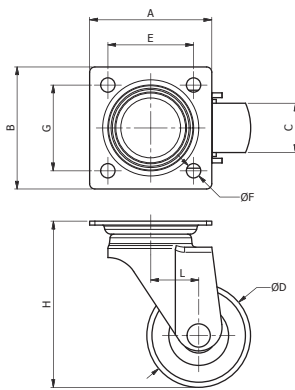
www.essentracomponents.co.uk

Castor – Brown Red Polyurethane Wheel

SR5692

Zinc Plated Steel Housing, Polyamide Centre

- Ideal for heavy duty applications such as trolleys for heavy loads
- Good resistance to wear, greases and petroleum byproducts
- Ambient temperatures: between -20°C and 60°C
- Double ball race crown
- Thermoplastic polyurethane tyre with hardness 60 ± 5 Shore D



Type 1

Type 2

Type 3

Swivel Plate

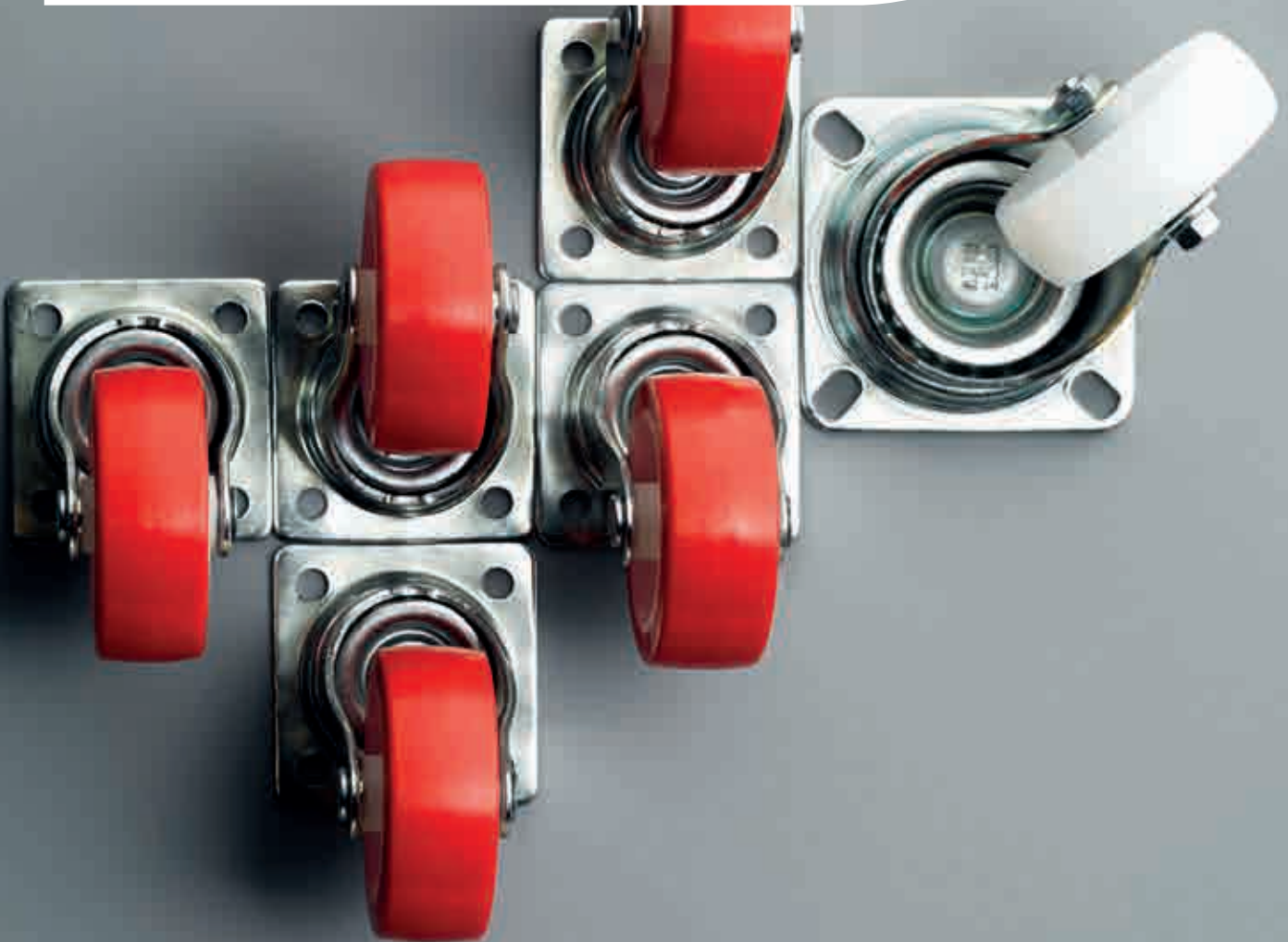
Part Number	Type	Dimensions (mm)						Approx. Load Capacity (kg)	Standard Pack Quantity
		D	C	A x B	E x G	F	H		
1337444	1	150	45	132 x 110	105 x 80	12	195	611.8	4
1337447	1	200	50	132 x 110	105 x 80	12	242	713.8	2
1337445	2	150	45	132 x 110	105 x 80	12	195	611.8	4
1337448	2	200	50	132 x 110	105 x 80	12	242	713.8	2

Fixed Plate

Part Number	Type	Dimensions (mm)						Approx. Load Capacity (kg)	Standard Pack Quantity
		D	C	A x B	E x G	F	H		
1337446	3	150	45	134 x 114	105 x 80	12	195	611.8	4
1337449	3	200	50	134 x 114	105 x 80	12	242	713.8	2

KEEP IT ROLLING WITH THE RIGHT **CASTORS**

With over 450 solutions, we've got the castors you need for your load weight and flooring conditions.



CALCULATING LOAD CAPACITY

Choose the right load capacity and ensure your castors roll properly without jeopardising safety or movement.

For a typical 4 x Castors application we recommend:

$$\frac{\text{Weight of apparatus} + \text{load}}{3} = \text{Load Capacity of Castors}$$

Wheel Material Guide

Polyurethane (PU) – Provides great performance with very low roll and swivel resistances

Polypropylene (PP) – Cost down alternative when compared to Polyamide

Polyamide (PA) – High load capacity with very low roll and swivel resistance

Rubber – Low to medium load capacity, smooth rolling with higher start-up force required



Wheel Bearing Guide

Wheel bearings determine how smooth a castor will travel

- **Plain bearing:** Simplest form of wheel bearings. Shock resistant, mostly maintenance free and generally corrosion proof. The bearing of choice for wheels on equipment to be moved with a low velocity over short distances
- **Roller bearing:** Robust and shock-resistant, characterised by their low installation height, low roll resistance and high load capacity
- **Cone ball bearing:** A group of roller bearings, using spheres to improve rolling performance
- **Precision ball bearing:** Extremely low rolling resistance with maximum load capacity

Single vs Twin Wheel

Where a low overall height is required in combination with a high load capacity a twin wheel castor will be the best choice.

Twin wheel castors turn in opposite directions, when the castor is swivelling, reducing ground friction and bettering performance.

QUESTIONS? GIVE US A CALL

Our Customer Service advisors are here to help you find the right product for your application.

CALL 0845 758 5070

www.essentracomponents.co.uk

HEAVY DUTY CASTORS

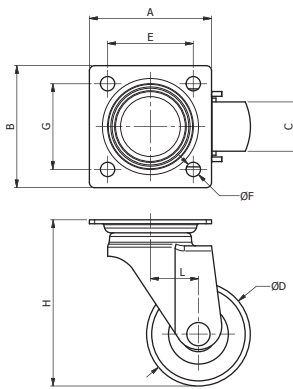
Castor – Brown Red Polyurethane Wheel

SR5693

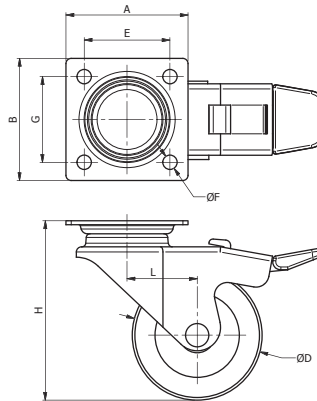
Stainless Steel Housing, Polyamide Centre



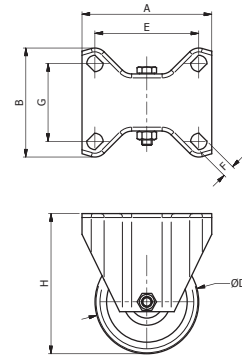
- Ideal for heavy duty applications such as trolleys for heavy loads
- Good resistance to wear, greases and petroleum byproducts
- Ambient temperatures: between -20°C and 60°C
- Double ball race crown
- Thermoplastic polyurethane tyre with hardness 60 ± 5 Shore D



Type 1



Type 2



Type 3

Swivel Plate

Part Number	Type	Dimensions (mm)						Approx. Load Capacity (kg)	Standard Pack Quantity
		D	C	A x B	E x G	F	H		
1337438	1	150	45	132 x 110	105 x 80	12	195	611.8	4
1337441	1	200	50	132 x 110	105 x 80	12	242	713.8	2
1337439	2	150	45	132 x 110	105 x 80	12	195	611.8	4
1337442	2	200	50	132 x 110	105 x 80	12	242	713.8	2

Fixed Plate

Part Number	Type	Dimensions (mm)						Approx. Load Capacity (kg)	Standard Pack Quantity
		D	C	A x B	E x G	F	H		
1337440	3	150	45	134 x 114	105 x 80	12	195	611.8	4
1337443	3	200	50	134 x 114	105 x 80	12	242	713.8	2

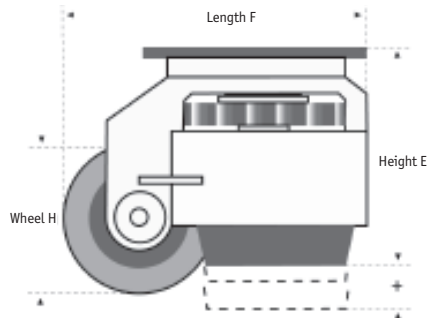
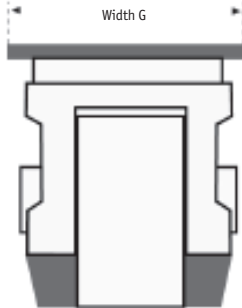
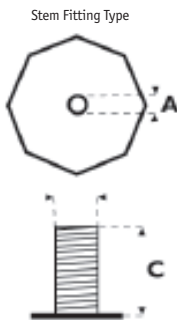
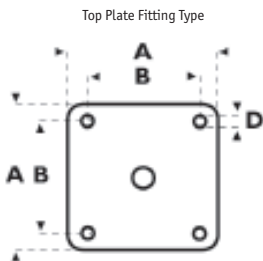
Multifunctional Levelling Castor

SR5694

Housing: Aluminum

Wheel: Polyamide

- Move and position large equipment single handedly
- Range of fittings and adjustment
- Up to 1500Kg load capacity



Part Number	Fitting Type	Load Capacity (kg)		Operating Method	Dimensions (mm)								Standard Pack Quantity
		Static	Dynamic		A	B	C	D	E	F	G	H	
1335860	Stem	50	125	Handwheel	40A/F	-	M8 x 15	-	71 + 10	84	58	42	1
1335861	Top Plate	250	125	Handwheel	73 x 73	58 x 58	-	6.5	82 + 10	100	70	50	1
1335862	Stem	250	125	Handwheel	46A/F	-	M12 x 18	-	82 + 10	100	70	50	1
1335863	Top Plate	250	125	Ratchet	73 x 73	58 x 58	-	6.5	82 + 10	100	70	50	1
1335864	Stem	250	125	Ratchet	46A/F	-	M12 x 18	-	82 + 10	100	70	50	1
1335865	Top Plate	500	250	Handwheel	90 x 90	70 x 70	-	9	102 + 15	125	85	63	1
1335866	Top Plate	500	250	Ratchet	90 x 90	70 x 70	-	9	102 + 15	125	85	63	1
1335867	Top Plate	750	375	Handwheel	95 x 95	70 x 70	-	11	120 + 12	142	95	75	1
1335868	Stem	750	375	Handwheel	64A/F	-	M16 x 24	-	120 + 12	142	95	75	1
1335869	Top Plate	1000	500	Hex spanner	95 x 95	70 x 70	-	11	120 + 12	137	95	75	1
1335870	Top Plate	1500	750	Hex Spanner	100 x 100	70 x 70	-	13	130 + 15	137	110	97	1

BALL TRANSFERS

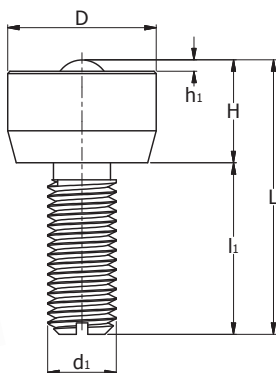
Mini Ball Transfer

SR6421

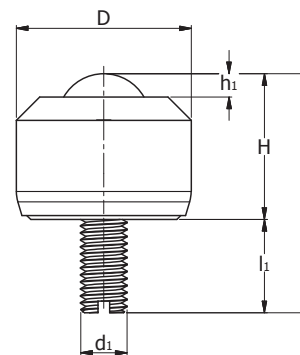
- Can be supplied as flat top or angled top
- Stainless steel screw thread fixing
- Suitable for applications such as measuring equipment; guides for small linear motion (e.g. photocopier slides); transferring material in clean rooms; miniature mechanisms
- Large load-bearing ball which sits upon many small balls encapsulated in a hemispherical cup



Flat top



Angled top



Flat Top

Carbon steel load balls and outer cover, stainless steel small balls

Part Number	Ball Size	Dimensions (mm)						Dynamic Load Up (kg)	Standard Pack Quantity
		D	H	h1	L	l1	d1		
550989	4.8	13.0	9.0	1.0	24.0	15.0	M6	10	50
550992	6.4	17.0	11.0	2.0	26.0	15.0	M6	20	25
550995*	7.9	18.0	14.0	2.0	32.0	18.0	M8	30	25

*Chrome steel small balls

Stainless steel load balls, stainless steel outer cover, stainless steel small balls

Part Number	Ball Size	Dimensions (mm)						Dynamic Load Up (kg)	Standard Pack Quantity
		D	H	h1	L	l1	d1		
550990	4.8	13.0	9.0	1.0	24.0	15.0	M6	10	50
550993	6.4	17.0	11.0	2.0	26.0	15.0	M6	20	20
550996	7.9	18.0	14.0	2.0	32.0	18.0	M8	30	25

Angled Top

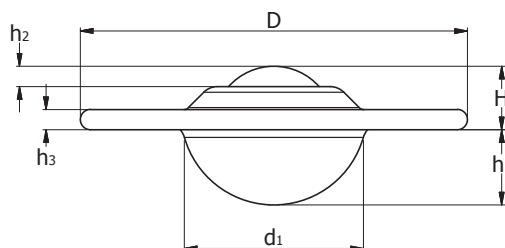
Stainless steel load balls, aluminium outer cover, stainless steel small balls

Part Number	Ball Size	Dimensions (mm)						Dynamic Load Up (kg)	Standard Pack Quantity
		D	H	h1	L	l1	d1		
550991	4.8	8.0	6.0	1.0	8.5	2.5	M2	5	25
550994	6.4	13.0	10.5	2.0	16.5	6.0	M3	10	20
550997	7.9	15.0	12.5	2.0	20.5	8.0	M4	15	50

Ball Transfer – Flange Fixing

SR6418

- Low profile ball transfers
- 2 or 3 hole flange fitting
- Dirt exit hole
- Pre-lubricated for reduced maintenance
- Available with carbon steel, polyamide and stainless steel main balls
- Large load-bearing ball which sits upon many small balls encapsulated in a hemispherical cup



Carbon steel bearings, zinc plated pressings

Part Number	Fixing Holes	Dimensions (mm)								Load Up (kg)	Load Down (kg)	Standard Pack Quantity
		Ball Size	D	H	h2	d1	h1	h3	Fixing Hole Dia			
550966	2	12.7	31.0	7.0	2.5	20.0	8.2	2.6	2.8	8	4	50
550968	2	15.8	41.3	10.2	4.0	23.0	8.3	3.2	3.5	12	6	50
550974	2	25.4	73.0	14.2	6.3	38.1	15.8	3.5	5.1	55	25	25
550970	3	19.0	61.0	10.0	3.2	30.0	12.0	3.2	5.1	25	10	50
550972	3	25.4	73.0	14.2	6.3	38.1	15.8	3.5	5.1	55	25	25
551030	3	31.7	73.7	16.2	8.0	46.5	19.9	4.2	5.1	125	55	25
551031	3	39.7	89.0	21.4	8.7	56.5	24.6	6.0	7.0	140	60	5
551033	3	50.8	120.7	28.3	14.3	76.5	30.2	6.3	8.0	340	100	5

Polyamide main ball, zinc plated pressings

Part Number	Fixing Holes	Dimensions (mm)								Load Up (kg)	Load Down (kg)	Standard Pack Quantity
		Ball Size	D	H	h2	d1	h1	h3	Fixing Hole Dia			
551050	2	12.7	31.0	7.0	2.5	20.0	8.2	2.6	2.8	4	2	25
551051	2	15.8	41.3	10.2	4.0	23.0	8.3	3.2	3.5	8	4	25
551054	2	25.4	73.0	14.2	6.3	38.1	15.8	3.5	5.1	25	10	25
551052	3	19.0	61.0	10.0	3.2	30.0	12.0	3.2	5.1	20	10	25
551053	3	25.4	73.0	14.2	6.3	38.1	15.8	3.5	5.1	25	10	25

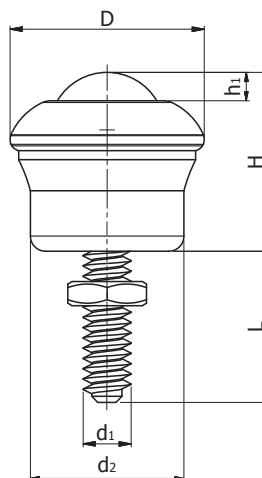
Stainless steel bearings and pressings

Part Number	Fixing Holes	Dimensions (mm)								Load Up (kg)	Load Down (kg)	Standard Pack Quantity
		Ball Size	D	H	h2	d1	h1	h3	Fixing Hole Dia			
550967	2	12.7	31.0	7.0	2.5	20.0	8.2	2.6	2.8	8	4	50
550969	2	15.8	41.3	10.2	4.0	23.0	8.3	3.2	3.5	12	6	50
550975	2	25.4	73.0	14.2	6.3	38.1	15.8	3.5	5.1	55	25	25
550971	3	19.0	61.0	10.0	3.2	30.0	12.0	3.2	5.1	25	10	25
550973	3	25.4	73.0	14.2	6.3	38.1	15.8	3.5	5.1	55	25	25
551032	3	31.7	73.7	16.2	8.0	46.5	19.9	4.2	5.1	125	55	25

Ball Transfer – Thread with Nut Fixing

SR 6419

- Dirt exit hole
- Typical applications: cargo and baggage handling; assembly lines; machine loading; sliding door systems; machine tables
- Large load-bearing ball which sits upon many small balls encapsulated in a hemispherical cup



Carbon steel bearings, zinc plated pressings

Part Number	Ball Size (mm)	Max. Torque on Nut (Nm)	Dimensions (mm)						Load Up (kg)	Load Down (kg)	Standard Pack Quantity
			D	H	L	h1	d1	d2			
550976	19	15	32.1	30.2	25.0	4.7	M8	25.4	25	10	25
550977	19	15	32.1	30.2	30.0	4.7	M8	25.4	25	10	10
550978	19	15	32.1	30.2	35.0	4.7	M8	25.4	25	10	25
550979	19	15	32.1	30.2	45.0	4.7	M8	25.4	25	10	10
550980	25.4	15	39.7	39.7	18.0	6.3	M8	25.4	55	25	20
550981	25.4	15	39.7	39.7	23.0	6.3	M8	25.4	55	25	20
550982	25.4	15	39.7	39.7	28.0	6.3	M8	25.4	55	25	20
550983	25.4	15	39.7	39.7	33.0	6.3	M8	25.4	55	25	20
550984	25.4	15	39.7	39.7	43.0	6.3	M8	25.4	55	25	20
551023	39.7	20	55.5	54.8	42.0	11.9	M10	49.0	140	60	20

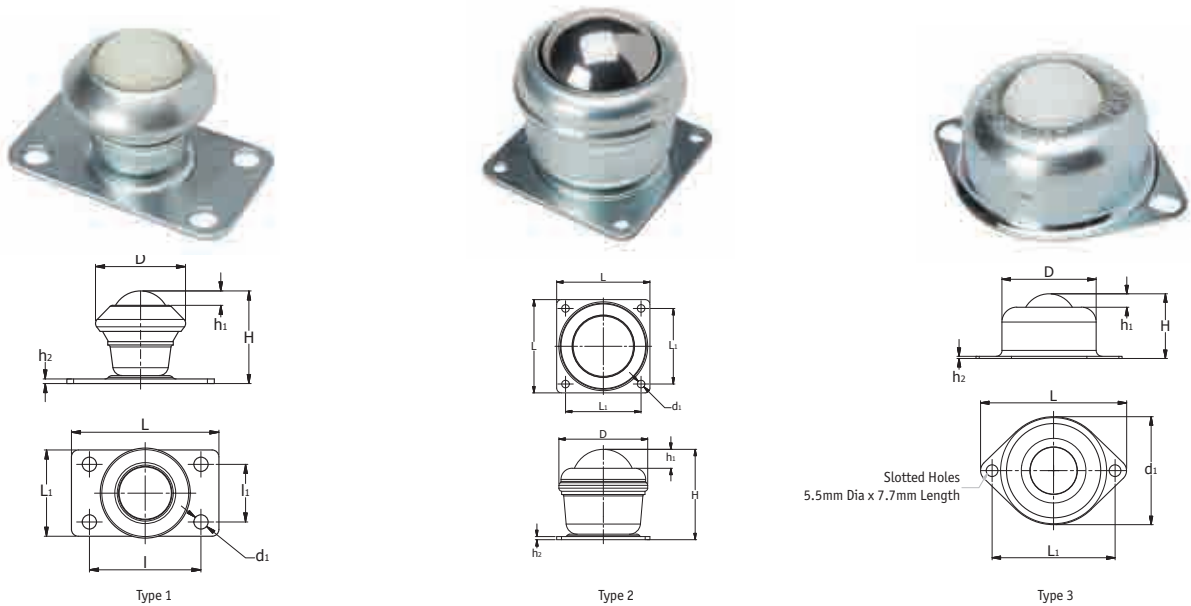
Stainless steel bearings, stainless steel pressings

Part Number	Ball Size (mm)	Max. Torque on Nut (Nm)	Dimensions (mm)						Load Up (kg)	Load Down (kg)	Standard Pack Quantity
			D	H	L	h1	d1	d2			
551025	19	15	32.1	30.2	30.0	4.7	M8	25.4	25	10	25
551022	25.4	15	39.7	39.7	33.0	6.3	M8	25.4	55	25	25
551024	39.7	20	55.5	54.8	42.0	11.9	M10	49.0	140	60	10

Ball Transfer Base Fixing

SR 6420

- Drill hole fixing
- Dirt exit hole
- Large support area for greater stability
- Typical applications: cargo and baggage handling; assembly lines; machine loading; sliding door systems; machine tables
- Large load-bearing ball which sits upon many small balls encapsulated in a hemispherical cup
- Type 1 and 2 – heavy duty fixing
- Type 3 – high load capacity



Carbon steel bearings, zinc plated pressings

Part Number	Type	Ball Size (mm)	Fixing Holes	Dimensions (mm)										Load Up (kg)	Load Down (kg)	Standard Pack Quantity
				D	H	h1	h2	d1	L	L1	l	l1				
550985	1	25.4	4	39.7	41.3	6.3	2.0	6.3	65.0	38.0	49.2	25.4	55	25	20	
550987	3	25.4	2	44.5	31.5	6.3	1.0	51.0	69.0	58.1	-	-	55	25	25	
551044	2	39.7	4	55.5	57.0	11.9	2.0	4.8	58.7	47.6	-	-	140	60	20	
551045	1	19	4	32.1	32.5	4.7	2.0	6.3	65.0	38.0	49.2	25.4	25	10	50	

Nylon main ball, zinc plated pressings

Part Number	Type	Ball Size (mm)	Fixing Holes	Dimensions (mm)										Load Up (kg)	Load Down (kg)	Standard Pack Quantity
				D	H	h1	h2	d1	L	L1	l	l1				
551055	1	25.4	4	39.7	41.3	6.3	2.0	6.3	65.0	38.0	49.2	25.4	25	10	50	
551056	3	25.4	2	44.5	31.5	6.3	1.0	51.0	69.0	58.1	-	-	25	10	50	

Stainless steel bearings and pressings

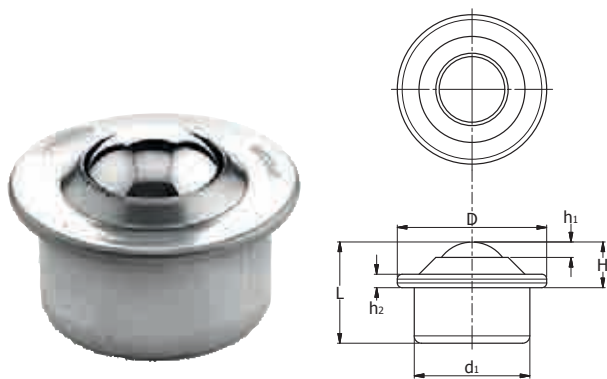
Part Number	Type	Ball Size (mm)	Fixing Holes	Dimensions (mm)										Load Up (kg)	Load Down (kg)	Standard Pack Quantity
				D	H	h1	h2	d1	L	L1	l	l1				
550986	1	25.4	4	39.7	41.3	6.3	2.0	6.3	65.0	38.0	49.2	25.4	55	25	25	
550988	3	25.4	2	44.5	31.5	6.3	1.0	51.0	69.0	58.1	-	-	55	25	25	
551043	2	39.7	4	55.5	57.0	11.9	2.0	4.8	58.7	47.6	-	-	140	60	20	

BALL TRANSFERS

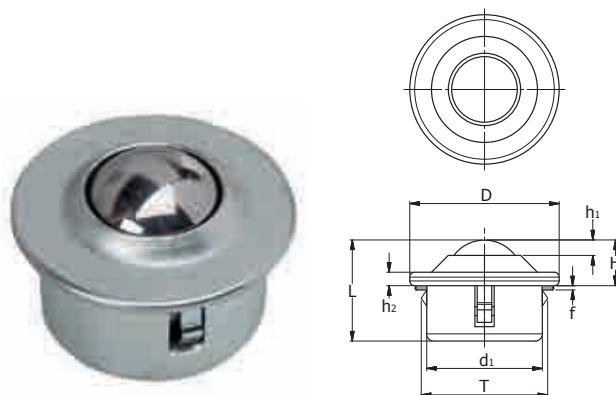
Euro Ball Transfer

SR6422

- Temperature range: -30°C to 70°C continuous, +100°C intermittent
- Special seals may need to be fitted to suit extreme conditions
- Typical applications: cargo and baggage handling; assembly lines; machine loading; sliding door systems; machine tables
- Euro transfer units have special toughened steel bearing cup, with a dirt exit hole and woollen felt seal
- Large load-bearing ball which sits upon many small balls encapsulated in a hemispherical cup
- To be attached using Fixing Clips on page 665



Type 1



Type 2

Carbon steel bearings, zinc plated pressings

Part Number	Ball Size (mm)	Type	Dimensions (mm)								Dynamic Loading (kg)	Standard Pack Quantity
			D	H	h1	d1	h2	L	T	Panel Thickness		
550998	15.8	1	31.0	9.5	3.2	24.0	2.8	21.0	-	-	60	50
551007	15.8	2	31.0	9.5	3.2	24.0	11.5	21.0	25.0	2.0	60	50
551000	22.2	1	45.0	9.8	4.3	36.0	2.8	30.0	-	-	160	25
551009	22.2	2	45.0	9.8	4.3	36.0	20.2	30.0	37.0	3.0	160	10
551002	30.0	1	55.0	13.8	5.5	45.0	4.0	37.0	-	-	300	20
551011	30.0	2	55.0	13.8	5.5	45.0	23.2	37.0	46.0	6.0	300	10
551029	44.5	1	75.0	19.0	9.0	62.0	4.0	53.5	-	-	610	10

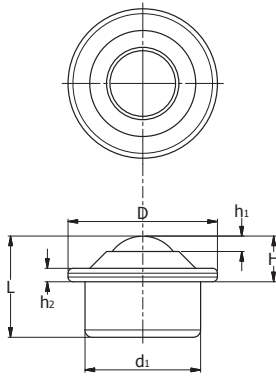
Polyamide main ball, zinc plated pressings

Part Number	Ball Size (mm)	Type	Dimensions (mm)								Dynamic Loading (kg)	Standard Pack Quantity
			D	H	h1	d1	h2	L	T	Panel Thickness		
551057	15.8	1	31.0	9.5	3.2	24.0	2.8	21.0	-	-	10	40
551059	15.8	2	31.0	9.5	3.2	24.0	11.5	21.0	25.0	2.0	10	5
551058	22.2	1	45.0	9.8	4.3	36.0	20.2	30.0	-	-	20	5
551060	22.2	2	45.0	9.8	4.3	36.0	20.2	30.0	37.0	3.0	20	10

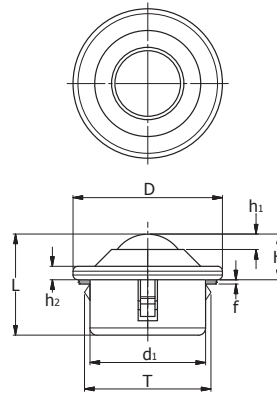
CONTINUED ON NEXT PAGE

Euro Ball Transfer *CONTINUED*

SR6422



Type 1



Type 2

Stainless steel bearings and pressings

Part Number	Ball Size (mm)	Type	Dimensions (mm)								Dynamic Loading (kg)	Standard Pack Quantity
			D	H	h1	d1	h2	L	T	Panel Thickness		
550999	15.8	1	31.0	9.5	3.2	24.0	2.8	21.0	-	-	38	50
551008	15.8	2	31.0	9.5	3.2	24.0	11.5	21.0	25.0	2.0	38	50
551001	22.2	1	45.0	9.8	4.3	36.0	2.8	30.0	-	-	100	20
551010	22.2	2	45.0	9.8	4.3	36.0	20.2	30.0	37.0	3.0	100	10
551003	30.0	1	55.0	13.8	5.5	45.0	4.0	37.0	-	-	200	20
551012	30.0	2	55.0	13.8	5.5	45.0	23.2	37.0	46.0	6.0	200	45

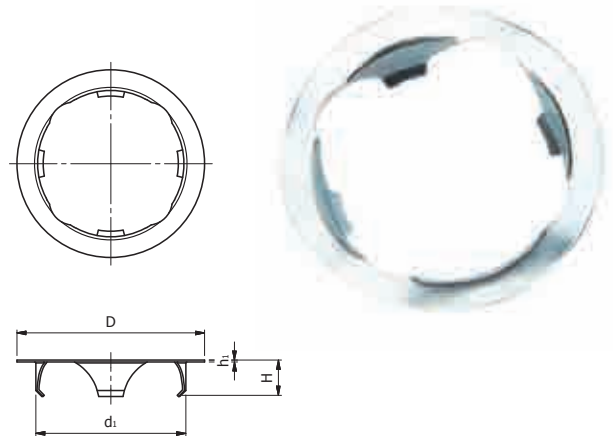
Fixing Clips

SR6422

Carbon Spring Steel

Zinc Plated

- Lock the unit securely in position
- Fixing clips are placed into the seated position, before the ball unit is fitted
- Fixing clips are used to fit Euro Ball Transfer Units - SR 6422 (Type 1) and SR6423



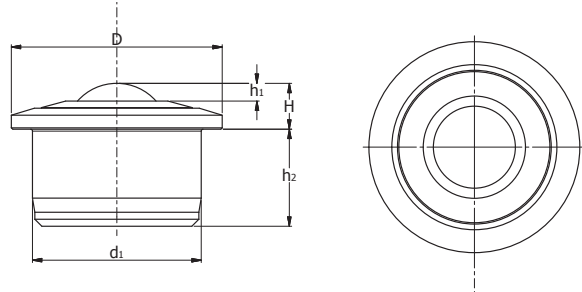
Part Number	Dimensions (mm)				Use With (part numbers)	Standard Pack Quantity
	D	H	h1	d1		
551004	30.9	6	0.3	24.7	550998, 550999, 551015, 551057	25
551005	44.5	7	0.3	36.7	551000, 551001, 551058, 551013	15
551006	54.9	7	0.3	45.7	551002, 551003, 551014	10

BALL TRANSFERS

Heavy Duty Ball Transfer

SR 6423

- High load capacity
- Low profile, robust construction
- Solid body, steel ball units
- Incorporate a seal and dirt exit hole for maximum efficiency and smooth running



Carbon steel bearings, zinc plated pressings

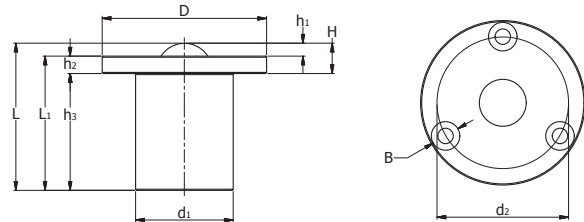
Part Number	Ball Size (mm)	Dimensions (mm)					Dynamic Load (kg)	Standard Pack Quantity
		D	H	h1	d1	h2		
551015*	15.8	31.0	9.5	4.0	24.0	11.5	10	5
551013	22.2	45.0	9.8	3.8	36.0	20.7	180	10
551014	30.0	55.0	13.8	5.5	45.0	23.0	350	10

*All plastic unit

Heavy Duty Ball Transfer – Spring Loaded

SR6457

- Spring loaded units reduce damage caused by shock loads
- Low profile
- Large top flange
- Allow for dimension changes due to temperature and self-adjust to evenly distribute loads
- Suitable for applications such as guillotines; presses; moulding machines; tool bases; press brakes and shock loading applications



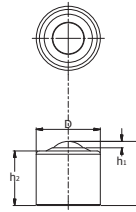
Carbon steel bearings and zinc plated pressings

Part Number	Ball Size (mm)	Dimensions (mm)										Dynamic Load (kg)	Load Full Depress (kg)	Standard Pack Quantity
		D	H	h1	h2	h3	d1	d2	B	L	L1			
551048	19	66.6	11.4	3.5	7.9	51.6	36.5	50.8	3 x 7	63.0	59.5	10	30	50
551049	25.4	75.0	13.8	5.9	7.9	53.3	44.5	60.3	3 x 7	67.1	61.2	35	100	10

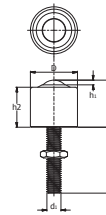
Heavy Duty Ball Transfer – Long Life

SR6454

- These heavy duty units are built to provide a long working life
- Suitable to withstand harsh conditions
- With dust seal and dirt exit hole
- Provide a higher load capacity than standard units
- Solid steel body for attachment purposes
- Body chemical black finish



Type 1



Type 2



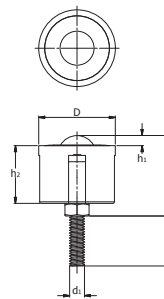
Carbon steel bearings, zinc plated pressings

Part Number	Ball Size (mm)	Type	Dimensions (mm)							Dynamic Load (kg)	Standard Pack Quantity
			D	H	h1	h2	d1	L			
551016	12.7	1	20.0	20.0	2.0	17.0	-	-	25	5	
551017	12.7	2	20.0	20.0	2.0	17.0	M6	28.0	25	50	
551018	19.0	1	30.0	30.0	4.0	26.0	-	-	50	5	
551019	19.0	2	30.0	30.0	4.0	26.0	M8	25.0	50	5	
551020	25.4	1	35.0	35.0	7.0	28.0	-	-	125	10	
551021	25.4	2	35.0	35.0	7.0	28.0	M8	40.0	125	10	
551037	31.7	2	50.0	45.0	8.0	37.0	M10	40.0	250	10	
551036	39.7	2	60.0	55.0	9.0	46.0	M12	50.0	500	5	

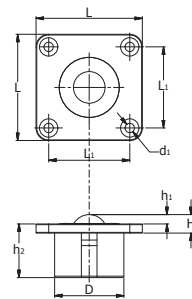
Heavy Duty Ball Transfer – Double Seal

SR6456

- Double seal for excluding debris from the bearings
- High resistance to organic solvents, petrol and oil
- Temperature range -30°C to +100°C
- The unit works equally well inverted or at an angle
- The top cover seal removes larger particles and the inner seal removes fine dust and particles off of the larger ball and expels it through side vents
- Type 1 has a bolt hole fixing with a locknut for height adjustment. Maximum tightening torque is 15 Nm
- Type 2 has a top flange with 4 hole fixings with 6.7mm hole diameters



Type 1



Type 2

Stainless steel bearings and pressings

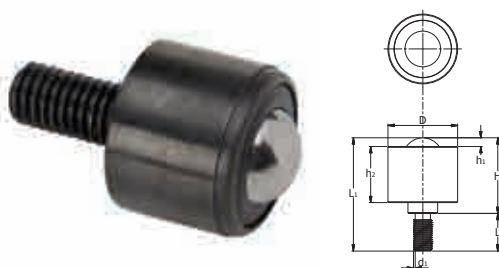
Part Number	Ball Size (mm)	Type	Dimensions (mm)							Dynamic Load (kg)	Standard Pack Quantity
			D	H	h1	h2	d1	L	L1		
551039	25.4	1	50.8	53.0	6.7	38.3	M10	17.6	-	240	25
551038	25.4	2	50.8	13.0	6.7	38.3	6.7	76	58.0	240	25

Heavy Duty Ball Transfer

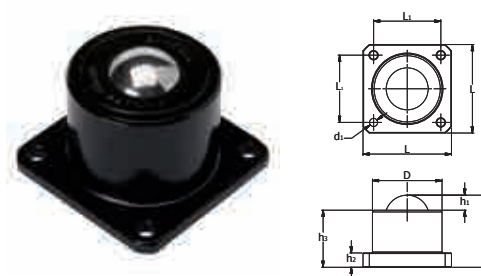
SR 6455

- Heavy duty ball transfer units are designed and manufactured to precise standards
- A range of ball sizes that offer load capacity from 35kg to 1000kg
- This range will work at maximum capacity in temperatures from -30°C to +100°C
- All units are anti-corrosive and have a black coated finish

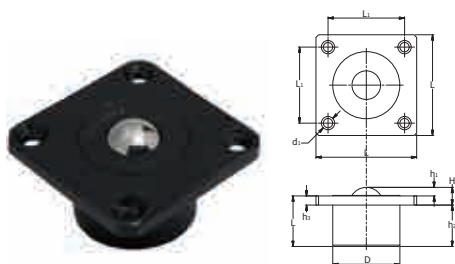
Type 1



Type 2



Type 3



Type 4



Type 5



Carbon steel balls

Part Number	Ball Size (mm)	Type	Dimensions (mm)								Dynamic Load (kg)	Standard Pack Quantity	
			D	H	h1	h2	h3	d1	L	L1			
551026	12.7	1	20.6	19.6	3.5	16.1	-	-	M8	16.2	35.8	35	10
551027	25.4	1	44.5	48.3	5.6	35.8	-	-	M12	24.1	72.4	135	10
551028	38.1	1	60.0	73.5	13.0	48.5	-	-	M20	40.8	114.3	1000	5
551035	25.4	2	44.5	41.4	5.6	4.8	35.8	-	4 x 5.6	57.2	44.5	135	10
551034	38.1	2	60.0	62.2	13.0	12.4	49.2	-	4 x 7.1	76.2	57.9	1000	5
551042	25.4	3	50.8	13.0	6.1	32.0	6.9	-	4 x 7.1	76.2	57.9	320	5
551041	38.1	3	60.0	25.4	13.0	35.8	12.4	-	4 x 7.1	76.2	57.9	1000	5
551046	12.7	4	20.6	19.6	3.5	16.1	-	-	-	-	-	35	25
551047	25.4	4	44.5	41.4	5.6	35.8	-	-	-	-	-	135	20
551040	12.7	5	25.6	28.5	3.1	8.0	-	-	25.4	25.4	-	25	25

Float-On Castors

SR 5695

**BZP Stem, Red Polyurethane (Shore A 90-95)
or Black Rubber Ball (Shore A 80-85)**

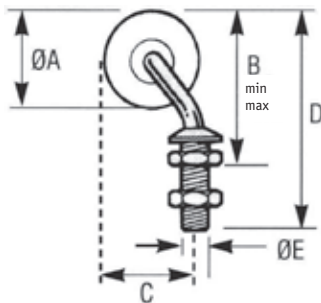
- Ensures smooth movement of delicate or polished flat materials
- Designed for use in wet and dry conditions
- Adjustable height
- Red polyurethane ball is more hardwearing; choose black rubber for most other applications



Type 1 - full assembly



Type 2 - stem, circlip, washer and ball only



Type 3 - ball only

Part Number		Orientation	Type	Dimensions (mm)						Max load (kg)	Standard Pack Quantity
Polyurethane	Rubber			A	B (min)	B (max)	C	D	E		
1220358	1220368	Left hand	1	35	55	77	38	88	13.5	15	40
1220359	1220369	Right hand	1	35	55	77	38	88	13.5	15	40
1220360	1220370	Left hand	1	50	73	95	58	106	13.5	20	20
1220361	1220371	Right hand	1	50	73	95	58	106	13.5	20	20
1220362	1220372	Left hand	2	35	-	-	38	-	-	15	50
1220363	1220373	Right hand	2	35	-	-	38	-	-	15	50
1220364	1220374	Left hand	2	50	-	-	58	-	-	20	20
1220365	1220375	Right hand	2	50	-	-	58	-	-	20	20
1220366	1220376	-	3	35	-	-	-	-	-	15	50
1220367	1220377	-	3	50	-	-	-	-	-	20	25